



LITTLE THEATRE

A
SOUTHPORT DRAMATIC CLUB
PRESENTATION



Francis Durbridge's

FATAL ENCOUNTER

A Nail-Biting Thriller from the 'Master of Suspense'

Directed by Hilary Thomson

26th Nov - 4th Dec 2004

7.45pm

Tel: (01704) 530521/530460 Fax: (01704) 546782

www.littletheatresouthport.co.uk



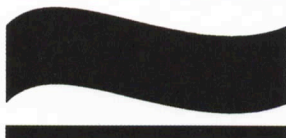
Supplying the complete
range of legal
services

SOLICITORS

Maxwell
& Entwistle
& Byrne

Contact **Michael Yates** on
01704 872156

Home and out of hours visits by arrangement



West Lancashire
Flooring Limited

CONTRACT & DOMESTIC FLOORING SPECIALISTS

Amisco



Tarkett

PRE - FINISHED
HARDWOOD FLOORING

Tel: 01695 578369 Fax: 01695 570623 Email: admin@wlflooring.co.uk

74 Ormskirk Business Park, New Court Way, Ormskirk, Lancashire L39 2YT

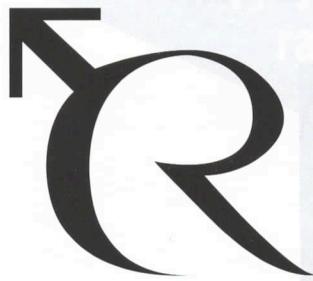
DIRECTOR'S NOTES



I was delighted to be asked to direct the third play of this season. *Fatal Encounter* has all the right ingredients for a good thriller: intrigue, mystery, suspense, a sprinkling of humour, add a little tense, mood-creating music and there you have it, the perfect thriller.

Thank you to my team of actors, and all stage crew members, and last, but certainly not least, you our audience. Sit back and enjoy our production.

Hilary Thomson
Director



NORTH WEST
**CANCER
RESEARCH
FUND**

HELP US FIND THE CAUSE

Funding Cancer Research for Over 50 Years

22 Oxford Street, Liverpool L7 7BL Tel: 0151 709 2919

Charity Reg. No. 223598



Mitchell & Wright Printers Limited

...the missing piece in your total design and print solution

Call **01704 535529** for a free quote
sales@mitchellwright.co.uk www.mitchellwright.co.uk

FRANCIS DURBRIDGE

Francis Durbridge was born in Hull, Yorkshire in 1912. He was inspired to write by an English teacher at Bradford Grammar School. He studied English at Birmingham University and worked briefly as a stockbroker before coming a full-time writer and had his first radio play accepted when he was 21.

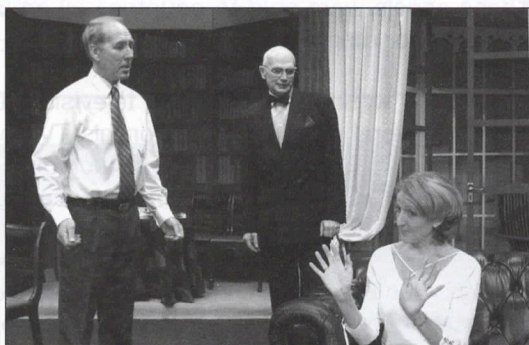
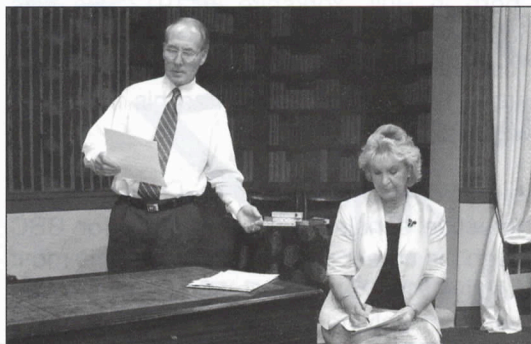
In 1940 he married Norah Elizabeth Lawley; they had two sons. He built his reputation on detective serials originally written for BBC radio and television. Although his career spanned 50 years, his most famous character was detective Paul Temple, who first appeared on radio in 1939. After 30 years of solving crime on the radio, Paul Temple switched to television in 1969. The series, which had the biggest budget for a BBC crime series at the time, lasted until 1971. These serials were sold to countries all around the world and were repeated for many years.

Apart from writing for radio and television, Durbridge published 35 novels, several of them based on his TV and radio series. He also wrote a number of stage plays, including *Deadly Nightcap*, *The Gentle Hook*, *Suddenly at Home*, *House Guest* and the last to be published being *Sweet Revenge* in 1991.

In 1997 Alan Bleasdale created his own version of Durbridge's 1960s BBC serial *Melissa*, in which a war correspondent, Guy Foster, falls in love with a beautiful but mysterious Melissa. Bleasdale described the mystery detective story as his "homage and tribute to one of this country's finest thriller writers.

Francis Durbridge died in April 1998 in London, following a long illness. He was 85.

FATAL ENCOUNTER



FATAL ENCOUNTER



**"THERE IS ONLY ONE THING IN THE WORLD
WORSE THAN BEING TALKED ABOUT AND THAT
IS NOT BEING TALKED ABOUT"** Oscar Wilde

We can help you maximise every marketing opportunity by generating high profile, positive awareness for you and your business from just a simple press release through to a full scale, high impact marketing campaign.

And you could qualify for up to 40% funding

towards the cost of our services through Business Link for Greater Merseyside.

Make sure your business is talked about -
call us today and let Concept
communicate your message to
your target audience.

Concept
Communications 

www.concept-communications.com

Galleon Buildings • 16-18 Stanley Street • Southport • PR9 0BY

Public Relations • Marketing • Event Management • Coaching



Project part funded by
the European Union



AlterEgg[®]

Cafe Bar

Located in front of the Little Theatre

Day & Night

Sandwiches, Pizzas and Light Bites,
Coffees and Speciality Teas in the day and combo platters at night.

With a musical backdrop from Jazz, Soul and Funk

Eat in or Take away

10% discount off food on presentation of this programme

FATAL ENCOUNTER



Francis Durbridge's **FATAL ENCOUNTER**

Directed by Hilary Thomson

Cast

in order of appearance

Hilary Van Zale PAT SIMPKIN
Howard Mansfield PETER HESLIN
Grace Kingsley JAN HALE
Mark Adler STEVE PRITCHARD
Joanna Mansfield CAROLE QUIRK
Perry Kingsley DAVID LAING
Chris Coldwell DAVID PARRY
Rex Winter BRENDAN GILLOW
Police Officer NICKI BARISIO

Time: The Present

The action takes place in the living room of Howard Mansfield's large house in Holland Park, London.

SYNOPSIS OF SCENES

ACT ONE

Scene One: An afternoon in July.
Scene Two: Later that day.
Scene Three: Three hours later.
Scene Four: The next morning.
Scene Five: Early evening the same day.

ACT TWO

Scene One: Immediately following.
Scene Two: Two hours later.
Scene Three: An hour later.
Scene Four: The following morning.
Scene Five: Several hours later.

There will be an interval of 20 minutes between the two acts

Staging

Stage Manager.....	Chris B. Appleton
Assistant Stage Manager (Book).....	Brenda Whelan
Lighting.....	Tony Berry
	Andrew Connard
Sound.....	Brian Hodge
Armourer.....	Syd Coley
Wardrobe.....	Sherel Coley and Cast
Props.....	June Hunter
	Nicki Barisio
Set Design.....	Syd Coley
Set Constructed by.....	SDC Production Team
Scenic Artist.....	Bob Jessamine
Photography by.....	Neil Hickson

Music played throughout the performance comes from:
Francesca Di Rimini by Tchaikovsky

Acknowledgements

The Director would like to thank:
David Charters, Lady Green Nurseries and Jon Ellis-Fox

Warning: There are gun shots in this performance

The management reserves the right to refuse admission to the auditorium after curtain up until a suitable opportunity occurs. First aid facilities are provided at this theatre by St John Ambulance Brigade, whose members give their services voluntarily.

Why not beat the rush and pre-order your interval drinks in the bar?

An induction loop is installed in this theatre for the benefit of hearing impaired patrons. Please turn your hearing aid to 'T'.

Please ensure that all mobile telephones are switched off

At the end of tonight's performance you may leave by any of the exits, all of which will be open. In an emergency, this theatre can be emptied in three minutes or less if everyone leaves in an orderly manner.

Smoking is prohibited in the auditorium.

THEATRE LICENSEE, BRIAN FORSHAW

Lady Green

NURSERIES



With a unique landscaped setting, displaying a wide selection of trees, shrubs, conifers, gifts and sundries and bedding plants in season. Good food and coffee shop.

The foliage and plants for *Fatal Encounter* have been supplied by Lady Green Nurseries.

Lady Green Lane, Ince Blundell,
Merseyside L38 1QD.
Off the main A565
Southport/Liverpool Road.
Tel: 0151 929 3635



LITTLE THEATRE

HOME OF

SOUTHPORT DRAMATIC CLUB

Advertisers Wanted

Spaces to let in this programme

Half Page – £25.00 per production plus VAT

Full Page – £50.00 per production plus VAT

Please contact: Norman Hope, Publicity Committee

HOGHTON STREET, SOUTHPORT

Tel: (01704) 530521/530460 www.littletheatresouthport.co.uk

Registered Charity No. 221585

FATAL ENCOUNTER

Cast

Hilary Thomson *Director*

This is the fourth play Hilary has directed for the SDC as well as four pantomimes. She has directed musicals for SONG and BOS and played many principal roles in plays and musicals.

Her professional work includes, *Hollyoaks*, *Brookside*, TV Commercials and Corporate Videos.

She was the original Polo mint girl in the 1964 TV advert.



Pat Simpkin *Hilary Van Zale*

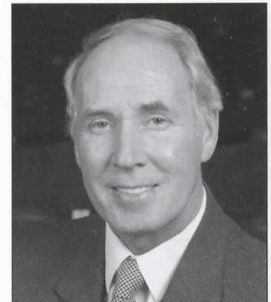
Having played varied principal roles in musicals with BOS and SAOS over the last 20 years, Pat is delighted to be making her debut with SDC in a supporting role in a thriller. She feels she has the experience required for the role having been a secretary for the last 40 years but has never had to cope with blackmail – until now! (*Welcome to SDC, Pat*) Ed.



Peter Heslin *Howard Mansfield*

Peter has been involved both on stage and backstage for a number of years. He has taken both large and small roles at the Little Theatre including *Shadowlands*, *Business Affairs*, *The Perfect Murder* and *Star Quality*.

He has also appeared in musicals for local operatic societies and has happy memories of *Kiss me Kate* and *South Pacific*. He enjoys serious productions as well as comedy. He was last seen at the Little in *London Suite*.



FATAL ENCOUNTER

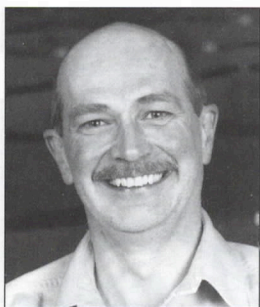
Cast



Jan Hale *Grace Kingsley*

Jan joined the SDC at the tender age of 18 and appeared in several pantomimes. She has enjoyed appearing in many farces and comedies over the years.

This is her first venture into a murder mystery and she still can't work out "whodunnit". Her most recent appearance was in *Stepping Out* for the SAOS.



Steve Pritchard *Mark Adler*

This is Steve's fifth season with the SDC having appeared with a number of societies in the town. Straight acting comes as a change from his appearances with the Houghton Players G & S society where his recent production of *The Mikado* was highly acclaimed. He has enjoyed working with Hilary Thomson, who he last appeared with as Mr Grumpy in *Mr Men the Musical*, many years ago!



Carole Quirk *Joanna Mansfield*

Carole is a prominent member of Longton Players and has acted in and directed numerous plays. She was last seen on stage for the SDC as Cherry-May in *Nude with Violin*. Most recently, Carole played the part of Marion in *The Noble Spaniard* for The Charity Players at the Charter Theatre, Preston earlier this year.

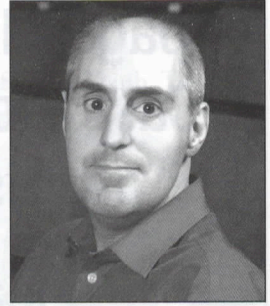
FATAL ENCOUNTER

Cast

David Laing *Perry Kingsley*

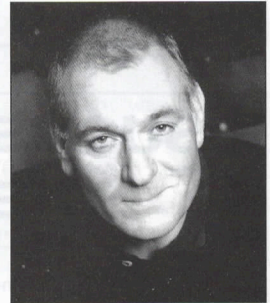
David, as our guest performer, has performed many times at the Little Theatre for Sefton Theatre Company. Most recently as Brian Epstein in *Dead Beat in Dakota*, and he also directed *Time To Kill* last February for Sefton.

He is also a musician and songwriter, having appeared and recorded with several bands over the years. (Welcome to our SDC production David) Ed.



David Parry *Chris Coldwell*

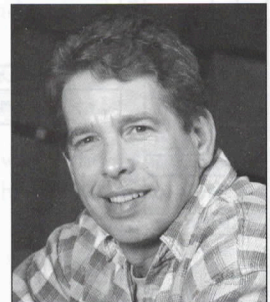
It is now 25 years since David first joined the SDC. Having appeared in his first play (a one act) as a police constable, he has now risen to the heady ranks of chief inspector. At least his progress in the police force has been better than as a thespian. Having just about recovered from *The Herbal Bed*, David hopes the effects of working with a hypnotherapist do not prove too traumatic for him.



Brendan Gillow *Rex Winter*

Brendan is a local lad, born in Southport in the cold winter of 1963. Apart from his college years in Coventry, and a brief stint in London, his working life has been spent in Lancashire.

It was his two girls and a local dame that persuaded him to resurrect his long-dormant acting career. (*Welcome to SDC, Brendan*) Ed.

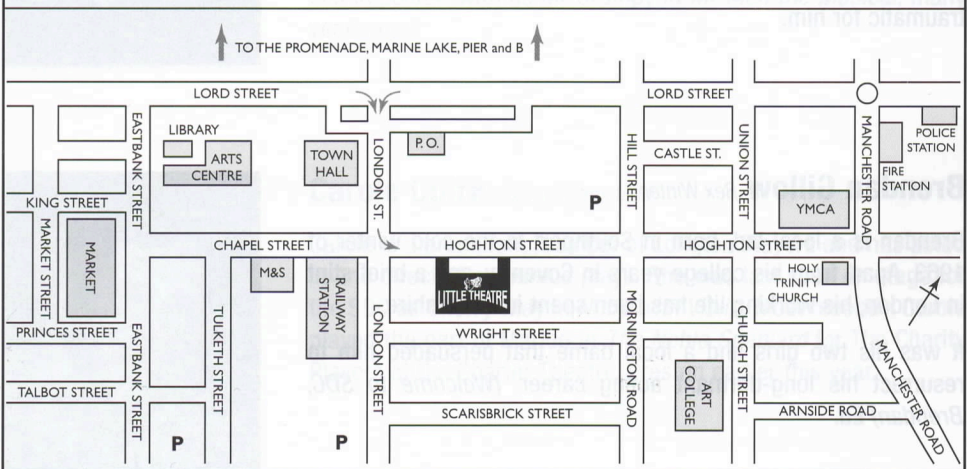


LARGE PRINT PHOTOCOPIES

of pages 10 and 11 of the programme
(Cast and Staging) are available for
our visually impaired patrons

Please enquire from our
programme sellers.

SUGGESTED PARKING FOR THE LITTLE THEATRE



“KNOW YOUR THEATRE” QUIZ!

A few pre-curtain brain-teasers to amuse!

Some 'in-house' – some not!

The answers can be found on page 19

- Who is the odd one out, and why?
 - Francis Durbridge*
 - Dick Francis*
 - Sir Francis Drake*
- What stage role has the Hon. General Secretary and the Hon. Treasurer of the S.D.C. both played? (at different times!)
 - Sherlock Holmes*
 - Professor Higgins*
 - Pantomime Dame.*
- How many years did Mrs. Jean Wright hold the office of Southport Dramatic Club Box Office Manageress, before she retired?
 - 37 years*
 - 25 years*
 - 14 years*
- Which professional Actor/Director is the present President of the S.D.C.?
 - Ian Holm*
 - Ian Judge*
 - Ian Sharpe*
- Which Southport theatre has been open the longest?
 - The New Theatre, the Promenade.*
 - The Arts Centre, Cambridge Arcade.*
 - The Little Theatre, Hoghton Street.*
- What was the S.D.C. Youth Theatre's last production?
 - Starlight Express*
 - Return to the Forbidden Planet*
 - Dr. Who*
- Which Repertory Company took over the Little Theatre, Southport during World War II (between the years 1939-1945)
 - Sheffield Repertory Company*
 - Southport Repertory Company*
 - Scarborough Repertory Company*
- Which famous playwright was born in Teddington, Middlesex in 1899, was knighted in 1970 and died in Jamaica in 1973?
 - William Shakespeare*
 - J.B. Priestley*
 - Noel Coward*
- Which S.D.C. production extended its 8 night run into the following week, due to public demand?
 - "Salad Days"*
 - "Everybody Loves Opal"*
 - "Royal Hunt of the Sun"*
- What year was the first Lady "Chairman" of the S.D.C. appointed?
 - 1980*
 - 1968*
 - 1946*



LITTLE THEATRE

SOUTHPORT DRAMATIC CLUB

DATES FOR YOUR DIARY



22nd December 2004 - 9th January 2005

MOTHER GOOSE

Our Traditional Family Pantomime

Written and directed by Stephen and James Hughes-Alty

An SDC Production Sponsored by NatWest



28th January - 5th February 2005

THE ANNIVERSARY

by Bill McIlwraith, directed by Mike Yates

An SDC Production

9th February - 12th February 2005

BLITHE SPIRIT

by Noel Coward

A Sefton Theatre Company Production



25th February - 5th March 2005

THE DRESSER

by Ronald Harwood, directed by Ray Mann

An SDC Production



16th March - 19th March 2005

DRACULA

by John Godber and Jane Thornton, directed by James Hughes-Alty

An SDC Youth Production



HOME OF SOUTHPORT DRAMATIC CLUB

Hoghton Street, Southport. Tel: (01704) 530521/530460 Web: www.littletheatresouthport.co.uk

Registered Charity No. 221585



LITTLE THEATRE

A SOUTHPORT DRAMATIC CLUB PRESENTATION

A fabulously funny black comedy of 1960s family life and manners



The *Anniversary*

By Bill McIlwraith
Directed by Mike Yates

28th January 2005 -
5th February 2005
7.45pm



HOME OF SOUTHPORT DRAMATIC CLUB

Hoghton Street, Southport. Tel: (01704) 530521/530460 Web: www.littletheatresouthport.co.uk
Registered Charity No. 221585

Answers to Quiz on page 17: 1. C (He didn't write mystery thrillers, as far as we know!), 2. C, 3. A, 4. B, 5. C, 6. B, 7. A, 8. C, 9. A, 10. B



LITTLE THEATRE

A
SOUTHPORT DRAMATIC CLUB
PRESENTATION

Southport's Most Spectacular Pantomime



Mother Goose

Written and Directed by Stephen and James Hughes-Alty; Choreography by Mandy Evans; Staged by Arnold Gorse; Musical Director, Paul Williams.

**22nd Dec -
9th Jan 2004/5**

NO BOOKING FEE

Tickets: £8.50 & £6.50,
(Concessions £7.00 & £5.50)

Contact Box Office for details


LITTLE THEATRE
SOUTHPORT
HOME OF
THE SOUTHPORT DRAMATIC CLUB

Sponsored by
 **NatWest**

Tel: (01704) 530521/530460 Fax: (01704) 546782

www.littletheatresouthport.co.uk