



SOUTHPORT
DRAMATIC CLUB
PRESENT



A CHORUS OF DISAPPROVAL

BY SIR ALAN AYCKBOURN
DIRECTED BY MARGARET MANN

Sponsored by
Davies
Maintenance

23RD APRIL -
1ST MAY 2004
7.45PM

Tel: (01704) 530521/530460

LITTLE THEATRE

www.littletheatresouthport.co.uk

HOGHTON STREET • SOUTHPORT

REGISTERED CHARITY No. 221985



- **Electrical Installations**
- **Central Heating Systems**
- **Bathrooms**
- **Niceic Electrical Reports**
- **Gas Safety Certificates**



102502



Unit 10 Enterprise Business Park, Russell Road, Southport PR9 7RF
Telephone: 01704 233233 Fax: 01704 233232
Email: daviesmaintenance@yahoo.co.uk

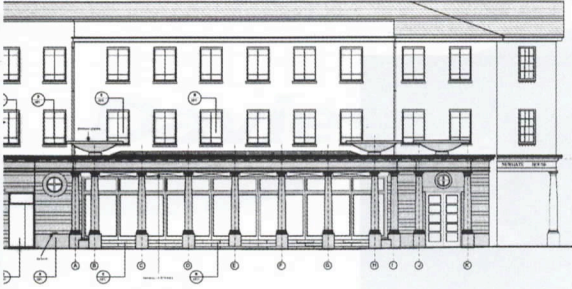
DIRECTOR'S NOTES



One of my birthday presents, last year, was a book by Alan Ayckbourn, about writing and directing which I found fascinating. I have always admired Ayckbourn's skill to present us with plays which are not only witty and amusing, but also explore relationships and are thought-provoking. Therefore, when I was invited to direct *A Chorus of Disapproval*, I was pleased to accept the challenge. We have had great fun rehearsing the play and hope that you will enjoy an entertaining evening watching it.

Unlike most plays, this one begins at the end! It starts with the final chorus of *The Beggar's Opera* performed by the Pendon Amateur Light Operatic Society (P.A.L.O.S.) a second rate amateur company! At the end of this performance the enthusiastic director, Dafydd ap Llewellyn, praises leading player Guy Jones for his portrayal of Macheath. The rest of the cast, obviously, don't agree! We then go back to Guy's arrival at the society, four months previously and follow his progress from a one line part to the lead. On the way we meet the various characters in the company and have a glimpse into their lives, on and off stage! Ayckbourn cleverly draws parallels between the events in the opera and the day to day activities of the people performing it. The result is an interesting, often hilarious play, which incorporates John Gay's delightful music. Thank you for supporting the Southport Dramatic Club's final production of this season

Margaret Mann
Director



Full Architect's services:

- Commercial / Office Premises.
- Restaurants.
- Industrial Units
- Retail Units.
- Shopfitting.
- Interior Design.
- Private Housing.
- Building Surveys.
- Land Surveys.

**CRAIG
FOSTER
ARCHITECTS**

North House
17 North John Street
Liverpool L2 5QY

Tel: 0151 236 0234

Fax: 0151 231 1112

e-mail: mail@craigfosterarchitect.co.uk

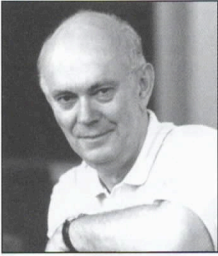
**Supplying the complete
range of legal
services**

SOLICITORS

**Maxwell
& Entwistle
& Byrne**

Contact **Michael Yates** on
01704 872156

Home and out of hours visits by arrangement



ALAN AYCKBOURN

Alan Ayckbourn, Artistic Director of the Stephen Joseph Theatre, Scarborough, was born in London in 1939. He has worked in theatre all his life as, variously, stage manager, sound technician, lighting technician, scene painter, prop maker, actor, writer and director. Most of these talents he developed (or abandoned) thanks to his mentor and founder of the Theatre in Scarborough, Stephen Joseph, who first encouraged him to write. Almost all of the 60-plus plays Alan Ayckbourn has written to date received their first performance at this theatre. More than 30 have subsequently been produced in the West End, at the Royal National Theatre or the RSC since his first hit, *Relatively Speaking*, opened at the Duke Of York's Theatre in 1967.

Major successes include *Absurd Person Singular*, *The Norman Conquests*, *Bedroom Farce*, *Just Between Ourselves*, *A Chorus Of Disapproval*, *Woman In Mind*, *A Small Family Business*, *Man Of The Moment* and *Things We Do For Love*. His plays have won numerous awards - including seven London Evening Standard Awards. They have been translated into 35 languages and are performed on stage and television throughout the world. They have also been filmed in French and English. Seven of his plays have been seen on Broadway attracting two Tony nominations. In 1991, he received a Dramalogue Critics Award for his play *Henceforward...* His plays now feature on the school curricula for study and examination. Nihon University, Tokyo houses a permanent collection of his work which is regularly updated.

He is an enthusiastic writer for children and Faber, in their Contemporary Classics series, have published a volume of five of these plays, amongst them the award winning *Mr. A's Amazing Maze Plays* and *Invisible Friends*, both staged at the Royal National Theatre.

Alan Ayckbourn is also an established director, not only of his own work (since 1978, he has directed all of his London productions) but other people's. In 1986, at Sir Peter Hall's invitation, he directed his own company of actors in four plays at the Royal National Theatre winning a Plays & Players Director Of The Year Award for his production of *A View From The Bridge* starring Michael Gambon. In 1995, his production of Herb Gardner's *Conversations With My Father*, starring Judd Hirsh transferred from Scarborough to London's Old Vic Theatre. In the States, he has twice worked at the Alley Theatre, Houston and in 1996 for the Goodspeed Opera House, Connecticut, the Geffen Playhouse, LA and the Kennedy Centre, Washington DC when he directed the US premiere of his and Andrew Lloyd Webber's musical *By Jeeves*. This was voted one of the 10 Best Productions of that year by Time Magazine. In February 2001 he restaged the musical at the Pittsburgh Public Theater, where it enjoyed a sell-out run, before transferring to Broadway in October of that year.

House and Garden, a 'double' play performed simultaneously in two auditoria, first seen at Scarborough in 1999 was staged at the Royal National Theatre in 2000. It played to packed houses in the Olivier and Lyttelton auditoria. There have been Dutch and German productions and four to date in the US, the most recent at New York's prestigious Manhattan Theatre Club.

He has been the Cameron Mackintosh Professor of Contemporary Theatre at Oxford University and is a fellow of the RSA. He holds honorary degrees from the Universities of Keele, Hull, Leeds, Bradford, York and the Open University and is an Honorary Fellow of Bretton Hall and Cardiff University of Wales. Other accolades include a Montblanc de la Culture Award for Europe for 'establishing a thriving theatrical tradition in Scarborough and for his dedication and commitment to it'; a Writer's Guild of Great Britain Lifetime Achievement Award and a Sunday Times Award for Literary Achievement. He was appointed a CBE in 1987 and in 1997 was knighted for his services to theatre. Alan Ayckbourn would perhaps regard his greatest achievement to be the establishment of a permanent home for the company of which he has been Artistic Director since 1971 - the Stephen Joseph Theatre. Six years of fundraising and hard work culminated in the opening on 30th April 1996 of a splendid two auditor complex. Fashioned from a former Odeon cinema, it stands in the centre of Scarborough and is the realisation of a 40 year dream.

ORLEANS



Residential Home

*6-8 Latham Road,
Southport,
Merseyside PR9 0JA*

Tel: 01704 530440

Fax: 01704 549995

Email: Petercleach@lineone.net



POLKA DOT.

BALLET, TAP, JAZZ

SHOES

LEOTARDS & DANCEWEAR

GYMWEAR

WONDERFUL IDEAS FOR DANCERS



4 Ryeground Lane, Formby

(Opposite The Grapes Hotel)

Telephone 01704 878138

Open Wed - Sat 10am - 5pm

A CHORUS OF DISAPPROVAL





SOUTHPORT DRAMATIC CLUB



Next Seasons Productions 2004-2005 will be chosen from:

**Chase me Comrade or
Run for Your Wife**
By Ray Cooney (Opening Production)

Crown Matrimonial
By Royce Ryton

Fatal Encounter
By Francis Durbridge

The Anniversary
By Bill McLlwraith

A Traditional Pantomime
By The SDC

Inside Job
By Brian Clemens

The Dresser
By Ronald Harwood

Allo Allo
By Jeremy Lloyd and David Croft

Juno and the Paycock
By Sean O'Casey

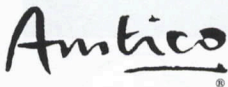
Amadeus
By Peter Shaffer

The Betrayal
By Harold Pinter (Bar Production)



**West Lancashire
Flooring Limited**

CONTRACT & DOMESTIC FLOORING SPECIALISTS



Tel: 01695 578369 Fax: 01695 570623 Email: admin@wlflooring.co.uk

74 Ormskirk Business Park, New Court Way, Ormskirk, Lancashire L39 2YT

A CHORUS OF DISAPPROVAL



A CHORUS OF DISAPPROVAL

BY ALAN ACKBOURN

DIRECTED BY MARGARET MANN

Cast

Guy Jones	SCOTT ROWAN
Dafydd ap Llewellyn	STEPHEN HUGHES-ALTY
Hannah Llewellyn	SHIRLEY ROOKYARD
Bridget Baines	JENNIE OGDEN
Mr. Ames	BRIAN HODGE
Enid Washbrook	KATHY FELTON-AKSOY
Rebecca Huntley-Pike	ANN RICHARDS
Fay Hubbard	HELEN PICKAVANCE
Ian Hubbard	MIKE YATES
Jarvis Huntley-Pike	RAY MANN
Ted Washbrook	JIM LONGWORTH
Crispin Usher	GUY UNSWORTH
Linda Washbrook	PIPPA MORRIS
Raymond / Barman / Café owner	CHARLES PRESTON
Members of P.A.L.O.S.	ANGELA COX, VALERIE PEDLAR, SABRINA REGAZZONI, CAROL SAWYER, MATTHEW WOODHAMS

The action occurs between the first rehearsal and the first performance of an amateur production of Gay's *The Beggar's Opera* between February and May.
It takes place in and around a small provincial theatre

Act 1

Scene 1	Final chorus in the first performance (May)
Scene 2	First rehearsal (previous February)
Scene 3	In the Pub
Scene 4	Dafydd's sitting room
Scene 5	Rehearsal room
Scene 6	Fay's sitting room
Scene 7	Rehearsal room (March)

Act 2

Scene 1	The local café (April)
Scene 2	Rehearsal room
Scene 3	Rebecca's garden (May)
Scene 4	In rehearsal
Scene 5	Lighting rehearsal on stage
Scene 6	Performance

There will be an interval of 20 minutes between the two acts

Staging

Stage Manager	RODERICK BEARDSSELL
Deputy Stage Manager	ANDREW CONNARD
Assistant Stage Manager (Book)	JUNE HUNTER
Stage Crew	CHRIS APPLETON ALEC ROBSON LINDSAY HAYWOOD
Props	JULIE WHELAN SUE HARROP DAVID HARROP JAMES HUGHES-ALTY
Wardrobe	SHEREL COLEY MARGARET HORNE PAT BALL
Lighting	TONY BERRY
Sound	CHRIS RATCLIFFE
Set Design	SYD COLEY
Set Constructed by	SDC PRODUCTION TEAM
Scenic Artist	BOB JESSAMINE
Photography by	NEIL HICKSON

Acknowledgements

The Director would like to thank:
Boxtree Nurseries for Shrubs

The management reserves the right to refuse admission to the auditorium after curtain up until a suitable opportunity occurs. First aid facilities are provided at this theatre by St John Ambulance Brigade, whose members give their services voluntarily.

Why not beat the rush and pre-order your interval drinks in the bar?

An induction loop is installed in this theatre for the benefit of hearing impaired patrons.
Please turn your hearing aid to 'T'.

Please ensure that all mobile telephones are switched off

At the end of tonight's performance you may leave by any of the exits, all of which will be open.
In an emergency, this theatre can be emptied in three minutes or less if everyone leaves in an orderly manner.

Smoking is prohibited in the auditorium.

THEATRE LICENSEE, BRIAN FORSHAW



Alter Ego®

Cafe Bar

Located in front of the Little Theatre

Day & Night

Sandwiches, Pizzas and Light Bites,
Coffees and Speciality Teas in the day and combo platters at night.

With a musical backdrop from Jazz, Soul and Funk

Eat in or Take away

10% discount off food on presentation of this programme



NORTH WEST CANCER RESEARCH FUND

HELP US FIND THE CAUSE

Funding Cancer Research for Over 50 Years

22 Oxford Street, Liverpool L7 7BL Tel: 0151 709 2919

Charity Reg. No. 223598

A CHORUS OF DISAPPROVAL

CAST

Margaret Mann *Director*

Since my childhood I've acted and directed with numerous dramatic and musical groups. I have met characters similar to some of those in the Penden Amateur Light Operatic Society but, fortunately, they have never been in the same production. Tonight, they are!



Scott Rowan *Guy Jones*

Scott is a familiar face to SDC audiences and hopes they will enjoy *A Chorus of Disapproval* as much as he has. He says he is honoured to be sharing the stage with his mentor, Mr Stephen Hughes-Alty B.A. Hons. He would also like to thank Margaret for her endless patience, with him.



Stephen Hughes-Alty *Dafydd ap Llewellyn*

Despite having been involved in several SDC pantomimes and directing the Youth Theatre, this is Stephen's first main season production. He is relishing the opportunity to play a machiavellian director who screams and shouts at everyone as opposed to actually being one. (*No change there then*) Ed.



Shirley Rookyard *Hannah Llewellyn*

Although only Shirley's second performance for the SDC, she has performed regularly in Southport in musicals. Shirley is delighted to be playing Hannah, a role which has brought new challenges, not least being married to a mad Welshman! Whilst Hannah is unable to resist the charms of her leading man, it has been equally difficult for Shirley to resist the urge to make a "song and dance" of it!



Trinity Arts Festival



Hoghton Street, Southport
Opposite the Y M C A

Saturday,
13th June, 7.30 pm
&
Sunday,
14th June, 3 pm

Southport Dramatic Club
present

Everyman

A morality play for our time

Holy Trinity Church
Admission £5
Concessions £4

Southport Bach Choir
present

Monteverdi Vespers of 1610

*with His Majesties Sagbutts & Cornetts
and Soloists*

Holy Trinity Church
Admission £12
Concessions £10

A concert performance by the

King's Division Normandy Band

*including light and military pieces
to suit most musical tastes*

Holy Trinity Church
Admission £7
Concessions £5

Tuesday,
22nd June, 7.45 pm

*For tickets and details of other events
phone Southport (01704) 532219 or 568001*

A CHORUS OF DISAPPROVAL

CAST

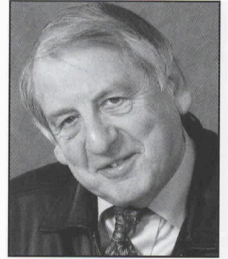
Jennie Ogden *Bridget Baines*

This is the fourth time Jennie has worked with Margaret. She has enjoyed it very much and hopes to repeat the experience. The role of Bridget has been challenging as it has required abruptness, rudeness and impatience, qualities she does not possess. "Anyone who thinks differently can get stuffed". Jennie says.



Brian Hodge *Mr. Ames*

Brian is enjoying this rare appearance on stage. When he is not organising the Sound Department he usually has his back to the audience, conducting musicals. In this production Brian plays Mr. Ames, who plays the Beggar (and they both play the piano!) He hopes our 'Chorus' meets with your 'Approval'.



Kathy Felton-Aksoy *Enid Washbrook*

Having died in *Shadowlands*, been taken advantage of in *Talking Heads* and rolled in a rug for *Living Together*, the part of Enid has been a breath of fresh air for Kathy. Never one to shirk from hard work though, she has diligently learnt every line, rehearsed every cue and practised every song in a performance that can best be described in one word - brief!



Ann Richards *Rebecca Huntley-Pike*

Ann has appeared in many Margaret Mann productions over the years. The last occasion was in *Lady Windermere's Fan* as the formidable Duchess of Beswick. Ann has really enjoyed rehearsals for 'Chorus' and the chance to play another domineering lady. She will also be remembered this season for wearing odd shoes in *London Suite*.



A CHORUS OF DISAPPROVAL

CAST



Helen Pickavance *Fay Hubbard*

Having recovered from Panto, Helen is now looking forward to her role as Fay in this production. A little different from Fairy Godmother in *Cinderella!* She says it's been great fun being in this cast and working with everyone as they are a great crowd.



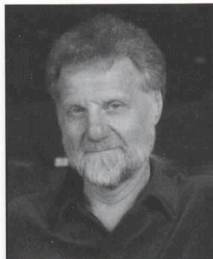
Mike Yates *Ian Hubbard*

Thirty years after his first appearance at the SDC playing a small part in a Margaret Mann production *Jack and the Beanstalk*. Mike finds himself in a Margaret Mann production playing a small part. His two left feet and tone deafness have resolutely stuck with him throughout the intervening years as have all of his hair and most of his teeth. As for the growth of his talent over the years - judge for yourselves!



Ray Mann *Jarvis Huntley-Pike*

Rehearsing Jarvis, the hard-nosed Northerner, has been a great pleasure for Ray. It has allowed him to wallow in the sounds of a sun-drenched childhood spent in the shadow of the Pennines. Such nostalgia, together with the "high-tech" staging, is sure to make playing Jarvis a moving experience for Ray!



Jim Longworth *Ted Washbrook*

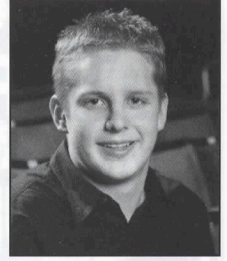
Jim's previous appearances in SDC productions have been in *Katherine Howard*, *Shadowlands* and *Amy's View*, although not as Ted Washbrook, he hastens to add.

A CHORUS OF DISAPPROVAL

CAST

Guy Unsworth *Crispin Usher*

Amongst certain members of the cast, Guy is now known as "The Iron Man", nothing to do with his part of Crispin, but in fact because he was caught ironing the P.A.L.O.S t-shirts! According to Guy, he was "ironing on the transfers", but the rumour still holds, ironing is just one of his much-loved past-times.



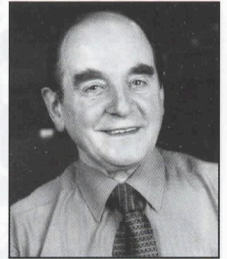
Pippa Morris *Linda Washbrook*

It makes a change for Pippa to be able to show her acting and singing abilities instead of dancing! She has enjoyed playing the troublesome Linda in *A Chorus of Disapproval* but hopes that her daughter Chloe won't grow up liking "wild lads"!



Charles Preston *Raymond / Barman / Café owner*

Charles has been appearing at the SDC for a long time. Latterly he has been given more small eccentric cameo parts. *A Chorus of Disapproval* is no exception. Tonight he has three more for you - in two you see him but do not hear him, in the third you hear him but don't see him!



Members of P.A.L.O.S.

Back row: Angela Cox,
Valerie Pedlar,

Front row: Carol Sawyer,
Sabrina Regazzoni and
Matthew Woodhams



SDC
SOUTHPORT
DRAMATIC
CLUB

The Little
Theatre

Dates
for
Your
Diary

Houghton Street,
Southport.
Telephone:
(01704)
530521/530460

8th May - 15th May 2004

CHESS

~By Tim Rice, Benny Anderson & Bjorn Ulvaeus
A Birkdale Orpheus Production

18th May - 22nd May 2004

QUARTET

by Ronald Harewood
Directed by David Charters
An SDC Bar Production

26th May - 29th May 2004

LA CAGE AUX FOLLES

A Pleasure Folk Theatre Company Production

9th June - 12th June 2004

CURTAIN CALL

A Maghull Operatic Society Production

16th June - 19th June 2004

DEAD BEAT IN DAKOTA

by Norman Revell, Directed by Tracey Batchelor
A Sefton Theatre Company Production

24th June - 26th June 2004

PAM BAMBER DANCE
FESTIVAL

30th June - 3rd July 2004

STEPPING OUT - THE
MUSICAL

by Richard Harris, Mary Stewart, David & Dennis King
A Southport Amateur Operatic Society Production



The North West Area of NAFAS
PRESENTS
A Festival of Flowers at
STONYHURST COLLEGE

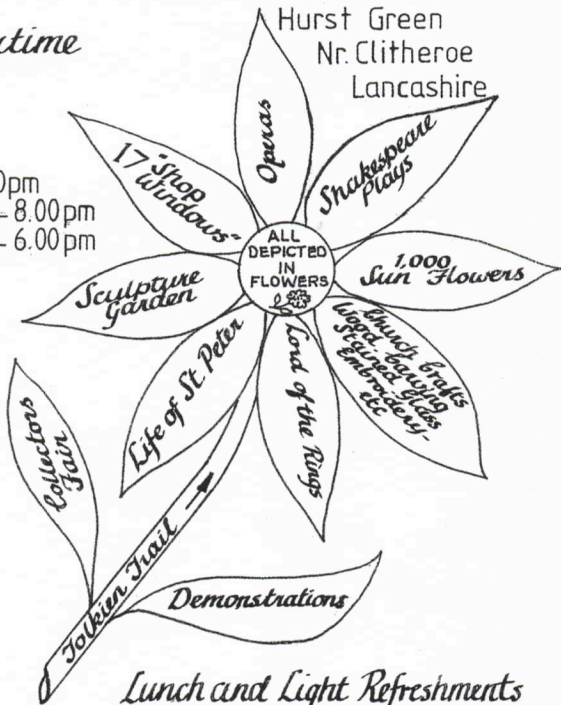
In the Summertime

AUGUST 2004

Friday 6th. 10.00am - 8.00pm
Saturday 7th. 10.00am - 8.00pm
Sunday 8th. 10.00am - 6.00pm

TICKETS £8.50
Pre-booked £7.50

available from
Mrs. Josephine Yates
Tel. 01704 227170



*Lunch and Light Refreshments
available*

*A.A. Directional Signs
Ample Free Car Parking*

*Donations from Proceeds to
North West Airambulance and International Aid Trust*



SOUTHPORT DRAMATIC CLUB



Presents the bitter sweet comedy

Quartet

By Ronald Harwood
Directed by David Charters

Theatre in the round in our air conditioned bar



18th - 22nd May
2004 at 7.45pm

Tickets: £6.50 & £5

Tuesday 18th and Wednesday 19th all tickets £5

No booking fee

Box office opening times:

14th and 15th May 11am - 2pm

17th May 11am - 5pm

18th - 22nd May 11am - 7.45pm

Tel: (01704) 530521/530460

LITTLE THEATRE

www.littletheatresouthport.co.uk

HOGHTON STREET • SOUTHPORT

REGISTERED CHARITY No. 221585