



SOUTHPORT DRAMATIC CLUB



exclusively presents The West End hit

Nobody's Perfect

by *Simon Williams*
directed by *Ray Mann*

Friday, 24th January -
Saturday, 1st February, 2003
at 7.45pm

Sponsored by
Duncan Sheard Glass

Tel: (01704) 530521/530460

LITTLE THEATRE

www.littletheatresouthport.co.uk

HOGHTON STREET • SOUTHPORT

REGISTERED CHARITY No. 221585

Duncan Sheard Glass

chartered accountants

Are delighted to sponsor Southport
Dramatic Club's production

Nobody's Perfect

At DSG we offer intelligent business and
financial advice to the North West Region.

For advice or just a chat about your finances, give
us a call.

Initial advice - no commitment and no fee.

Contact: Ian Douglas

DSG

Duncan Sheard Glass
Chartered Accountants

45 Houghton Street
Southport

Merseyside PR9 0PG

Tel: 01704 532722/533936

Fax: 01704 500113

E-mail: southport@dsg.uk.com

Director's Notes



Welcome to the second half of the season.

We have a delightful play for your entertainment tonight, an amusing comedy with a heart of gold. The cast consists of just four characters; the staging is not so simple.

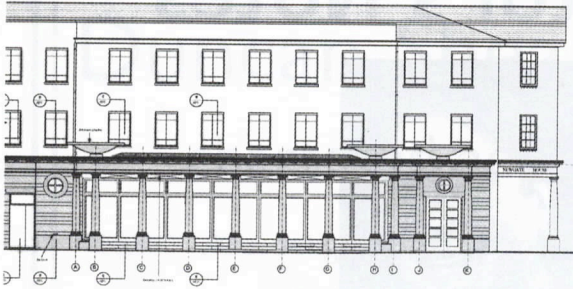
Right at the back of the set we find part of a street and, in particular, the front entrance to a block of flats. At stage level we have two acting areas. The larger one is the living room of a basement flat; the other one is the office of a book editor in a publishing house somewhere else in London, and that's not all. We also have the bedroom of the teenage daughter up the flight of stairs.

Quite a lot to squeeze onto our stage. I am indebted to set designer, Syd Coley, and to stage manager, Chris Appleton and his team, for providing such an excellent set on which to perform.

Needless to say, we have had a great time at rehearsal, not least because in the play, on numerous occasions, the characters are often in different rooms. But that's not a problem if you can communicate by telephone, mobile, inter-com, entry-phone or answering machine - is it?

On second thoughts, forget my explanation, let the play do the talking; I was just trying to be helpful - but Nobody's Perfect.

Ray Mann
Director



Full Architect's services:

- Commercial / Office Premises.
- Restaurants.
- Industrial Units
- Retail Units.
- Shopfitting.
- Interior Design.
- Private Housing.
- Building Surveys.
- Land Surveys.

**CRAIG
FOSTER
ARCHITECTS**

North House
17 North John Street
Liverpool L2 5QY

Tel: 0151 236 0234

Fax: 0151 231 1112

e-mail: mail@craigfosterarchitect.co.uk

**Supplying the complete
range of legal
services**

SOLICITORS

**Maxwell
& Entwistle
& Byrne**

Contact **Michael Yates** on
01704 872156

Home and out of hours visits by arrangement

Simon Williams

Tonight's production is a modern, fast-moving and witty comedy by the well-known actor/writer, Simon Williams. A mixture of farcical situations and a most unusual "identity crisis" provide an evening of chaotic fun. As the characters sort themselves out, the laughter builds up to the final hilarious sequence.

In the first tour of "Nobody's Perfect", which premiered in January, 2002 at the Theatre Royal, Windsor, Williams played Myrtle Banbury, whose work has recently won a romantic fiction competition. The only problem is that in order to claim his prize of a publishing contract he has to meet with the feminist publisher as a woman.

Simon Williams is a classic theatre actor and writer, his early work included: "Hay Fever", "Gigi", "An Ideal Husband", "They're Playing Our Song" and "Death Trap". More recent credits include: "The Common Pursuit", "The Lover", "A Marriage Has Been Arranged", "The Black Prince" and "Tartuffe".

Simon Williams has also appeared in much television work, including "Upstairs Downstairs", "First Among Equals", "Don't Wait Up", "Law and Disorder" and "The Pig Heart Boy". His film credits include "The Prisoner of Zenda", "The Fiendish Plot of Dr Fu Manchu", "The Odd Job" and "No Longer Alone". Williams has also written several plays including "Switchback", "Laying The Ghost" and the novels "Talking Oscars" and "Kill The Lights".

ORLEANS

Residential Home

- Full Central Heating
- Visitors' bedroom
- Regular visits by chiropodist, optician and dentist
- Nurse call system in every room
- Regular minibus outings
- Special diets catered for

6-8 Lathom Road, Southport PR9 0JA
Tel: 01704 530440



POLKA DOT.

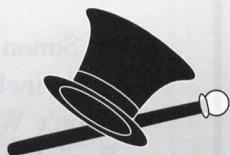
BALLET, TAP, JAZZ

SHOES

LEOTARDS & DANCEWEAR

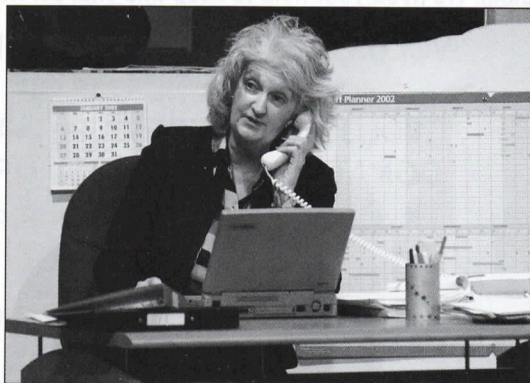
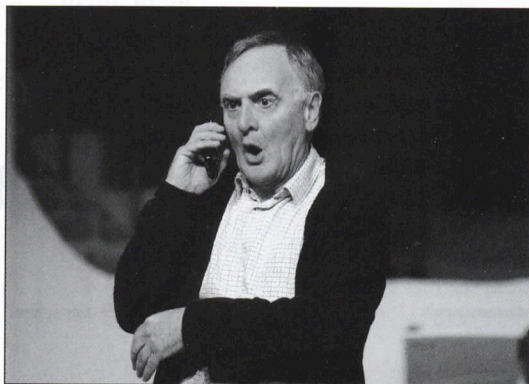
GYMWEAR

WONDERFUL IDEAS FOR DANCERS



4 Ryeground Lane, Formby
(Opposite The Grapes Hotel)
Telephone 01704 878138
Open Wed - Sat 10am - 5pm

Nobody's Perfect





Mitchell & Wright Printers Limited

Bright ideas,
brilliant print!

The Print Works, Banastre Road, Southport PR8 5AL
Tel 01704 535529 Fax 01704 543216 ISDN 01704 547850
Email print@mitchell-wright.demon.co.uk

**The
Samaritans**

of Southport and District

CAN YOU HELP US?

We are here 24 hours a day to provide confidential support for the despairing or suicidal. We need your help to keep this vital service going:

VOLUNTEERS TO STAFF OUR PHONE LINES

FUNDRAISING

VOLUNTEERS FOR OUR CHARITY SHOP

DONATIONS OF GOODS FOR OUR SHOP

If you can help with any of these, please call us.

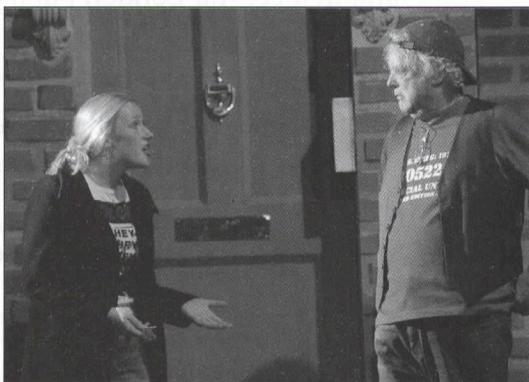
**The
Samaritans**

We are always here to listen

32 Union Street, Southport

Tel: 01704 538038 (24 hours)

Nobody's Perfect



Nobody's Perfect

A comedy by Simon Williams

Directed by Ray Mann

Cast

LeonardJOHN SHARP

HarrietANN RICHARDS

Dee DeeELIZABETH FORD

GusERYL LLOYD-PARRY

The action takes place in a south-west London flat
and in a central London publishing house.

Time: the present (autumn)

The action is continuous

There will be a 20 minute interval during the performance.

Staging

Stage Manager	CHRIS D. APPLETON
Deputy Stage Manager	CHRIS B. APPLETON
Assistant Stage Manager (Book)	SHEILA FURLONG
Properties	JULIE WHELAN
Lighting Design	TONY BERRY
Lighting Operator	ANDY STEEL
Sound	BERNIE HOWAT
Wardrobe	THE SDC TEAM
Set Design	SYD COLEY
Set Constructed by	SDC PRODUCTION TEAM
Scenic Artist	BOB JESSAMINE
Photography by	NEIL HICKSON

ACKNOWLEDGEMENTS

We would like to thank:

The Salvation Army, Southport Corps' Furniture Warehouse and Specsavers, Southport.

The management reserves the right to refuse admission to the auditorium after curtain up, until a suitable opportunity occurs. First aid facilities are provided at this theatre by St John Ambulance Brigade, whose members give their services voluntarily.

•
Why not beat the rush and pre-order your interval drinks in the bar?

•
An induction loop is installed in this theatre for the benefit of hearing impaired patrons.
Please turn your hearing aid to 'T'.

•
Please ensure that all mobile telephones are switched off

•
At the end of tonight's performance you may leave by any of the exits, all of which will be open.
In an emergency, this theatre can be emptied in three minutes or less if everyone leaves in an orderly manner.

•
Smoking is prohibited in the auditorium.

THEATRE LICENSEE, BRIAN FORSHAW

Lord Street's No.1 Restaurant

Valentino

Restorante Italiano

Pasta Night

Monday - Wednesday all night £4.95
choice of Pasta and free Garlic Bread

Early Bird

Monday - Thursday 3 Courses
6.00pm - 8.00pm £8.95

Open Sunday Lunchtime

Now part of the Shelbourne Complex

1 - 5 Lord Street, Southport. Telephone 01704 538401

RENDEZ-VOUS BAR

The New, Exciting Bar

20a/b Hoghton Street, Southport, (next to the Little Theatre)

Opening Times

M	11am - 6pm
T	11am - 6pm
W	11am - 6pm
T	11am - 6pm
F	11am - 11pm
S	11am - 11pm

Offers

to all theatre customers

20% off

food and drink on theatre nights

5pm - 11pm

Food served 5pm - 7pm

(bookable in advance)

Please show ticket stubb to bar staff

Tel: 01704 513722

(No children
allowed in the bar)

Nobody's Perfect

Cast

Ray Mann (*Director*)

In over 30 seasons with the SDC, Ray has played a rich variety of roles. He especially enjoys having direct access to the audience, for example: when playing the narrator in such plays as "Scent of Flowers", "Royal Hunt of the Sun", "Cider with Rosie" and, more recently, "Dancing with Lughnasa".

The Club's occasional musicals have also allowed Ray to step up to the audience too, his favourite roles being the Lion in "Wizard of Oz", Joe in "Good Companions" and the Dame in pantomime.

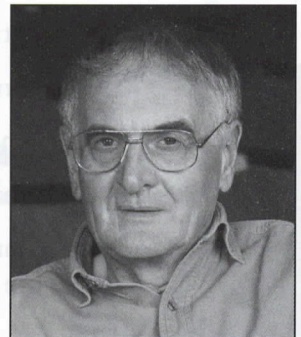
For Ray, directing plays is an entirely different matter. He thoroughly enjoys his part in organising the production with his technical colleagues. He finds taking the actual rehearsals with the cast a great delight. He loves the excitement of dress rehearsals and the opening night. But then Ray has literally to take a back seat - and that's not easy!



John Sharp (*Leonard*)

John's most recent appearances in SDC productions were as Henry VIII in "Katherine Howard" and Pontagnac in "An Absolute Turkey". Hardly suitable preparation for the part of a dowdy little statistician.

However, rumour has it that this current role gives him a chance of fulfilling a long-held wish.



Top Ten

Being a best selling author is well and good, but how long do you stay famous. See who you recognise from the list of 1937's best sellers.

- | | |
|--|--|
| 1, Gone with the Wind, Margaret Mitchell | 6. The Years, Virginia Woolf |
| 2, Northwest Passage, Kenneth Roberts | 7, Theatre, W. Somerset Maugham |
| 3, The Citadel, A. J. Cronin | 8, Of Mice and Men, John Steinbeck |
| 4, And So Victoria, Vaughan Wilkins | 9, The Rains Came, Louis Bromfield |
| 5, Drums Along the Mohawk, Walter D. Edmonds | 10, The Late George Appley, John P. Marquand |

QUIZ

What better place to be on a night like tonight, than in the warmth at the Little and, while you wait for the play to start, here's a little quiz on places for you.

- 1 On which river is Warsaw situated?
- 2 What country does Gotland belong to?
- 3 Which country does Ethiopia form its eastern border with?
- 4 Which island group does Rhodes belong to?
- 5 At which sea is Palermo situated?

For answers see bottom of page 18
for the link see the next programme

Nobody's Perfect Cast

Ann Richards (*Harriet*)

Ann appeared last season as the cleaning lady in “Two and Two Together”, where she interfered to great effect in the neighbourhood's love affairs. This experience has proved most valuable in her role as the editor of a feminine publishing house producing lavish works of romantic fiction.

She even manages to find some romance for herself.



Elizabeth Ford (*Dee Dee*)

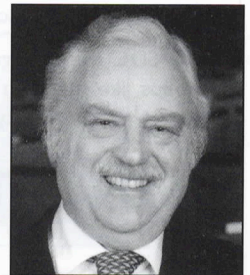
Liz has most recently been seen playing mum in the last two Youth Theatre productions: “Jungle Book” and “The Railway Children”. Before this she appeared as a single mother, Adele in the 2001 out of season production of “Shakers Re-stirred”.

Her most relevant experience for the role of Leonard's wayward daughter, Dee Dee however, is undoubtedly the part of bolshy teenager, Sandra, which she played in her first season's production, “Breezeblock Park”.



Eryl Lloyd-Parry (*Gus*)

Despite being endowed with an extravagantly youthful appearance, he finds himself nowadays being discouragingly cast as oldies, such as Sir Peter Teazle in “The School for Scandal”, Joe Keller in “All My Sons” and Uncle Willy in “The Philadelphia Story”. After his singing debut in tonight's production, he expects an eager director to snap him up for the title role in “Oliver”.



Brain teaser

Not just a quiz this time but also a brain teaser for you.

Five journalists (numbered 1-5) predicted the outcome of the placements of five athletes in a competition; the predictions appear in the chart below. No prediction was completely correct, but two journalists correctly predicted some placements exactly of two athletes. The other three journalists were totally wrong. Can you determine the actual outcome of the competition?

	1st	2nd	3rd	4th	5th
1.	Ryan	Josemith	Edward	Alonso	Linus
2.	Linus	Alonso	Ryan	Josemith	Edward
3.	Linus	Josemith	Edward	Alonso	Ryan
4.	Edward	Linus	Alonso	Ryan	Josemith
5.	Linus	Josemith	Edward	Ryan	Alonso

See bottom of page 19 for the answer.

A Home for the SDC?

So how many homes has the SDC had in all? Temporary venues for major productions included: the Opera House (until burnt down), the Pier Pavilion (until burnt down) and the Garrick Theatre (a magnificent theatre and a listed building, now a Bingo emporium, but at least it hasn't burnt down). For a short period, the club took the lease of premises at Mornington Road. In 1935, negotiations between the Liverpool Victoria Friendly Society and the SDC resulted in the club obtaining a long lease on a yet-to-be-built theatre and, in 1937 the Little Theatre, Hoghton Street, became our permanent home, which like some of our other venues has also had the occasional fire.

The SDC has a magnificent base for its productions, one which is envied by many other groups like our own and which rivals many professional establishments. The SDC and the Little have become synonymous and one can never imagine them parted.

SDC - The Theatre Experience

Nobody's Perfect





SDC
SOUTHPORT
DRAMATIC
CLUB

The Little
Theatre

Dates
for
your
Diary

Hoghton Street,
Southport.
Telephone:
(01704)
530521/530460

8th February 2003

Hesketh Brass Band
Concert

12th - 15th February 2003

The Unexpected Guest

A Sefton Theatre Company production

28th February - 8th March 2003

THE PERFECT MURDER

by Hugh Jane, directed by Doug Carrick

An SDC Production

12th - 15th March 2003

OUR DAY OUT

by Willy Russell, directed by Stephen Hughes-Alty

an SDC Youth Production

28th March - 5th April 2003

AMY'S VIEW

by David Hare, directed by John Sharp

Sponsored by Mitchell & Wright Printers Limited

An SDC Production

25th April - 3rd May 2003

NUDE WITH VIOLIN

by Noel Coward, directed by Margaret Mann

Sponsored by Hedley & Company

An SDC Production

3rd - 7th June 2003

LOOT

by Joe Orton, directed by Alistair Hewitt

An SDC Bar Production



SDC
YOUTH THEATRE



Presents

Our Day Out

Written by Willy Russell, Directed by Stephen Hughes-Alty

12th - 15th March, 2003

Box office: 6th - 11th March 11am - 4pm

12th - 15th March 11am - 7.45pm

Tickets £5, first night special offer all tickets 2 for 1

DID YOU KNOW?

Before the turn of the century in America, newspapers were called tabloids, chronicles and gazettes. Most were filled with local stories; far away stories were quite old as it took a while for them to travel (and of course they were subject to changes from hand to hand).

With the advent of the teletype, stories could be broadcast all over at unheard of speed. Several of the papers started carrying a section with stories from different regions - North, East, West and South and that is why we now have the newspaper.

Well it's a nice story, let's hope it's true (unlike the content of most newspapers nowadays!)



SOUTHPORT DRAMATIC CLUB



Presents the hit thriller

THE PERFECT MURDER

Written by Hugh Jane

Adapted from the novel by Jeffrey Archer

Directed by Douglas Carrick

**FRIDAY, 28TH FEBRUARY -
SATURDAY, 8TH MARCH, 2003
7.45PM**

Box Office

22nd February 11am - 1pm

24th - 27th February 11am - 5pm

28th February - 8th March 11am - 7.45pm

Tel: (01704) 530521/530460

LITTLE THEATRE

www.littletheatresouthport.co.uk

HOGHTON STREET • SOUTHPORT

REGISTERED CHARITY NO. 221585