



SOUTHPORT DRAMATIC CLUB



Presents The West End hit

BEDROOM FARCE

By Alan
Ayckbourn

Directed by Robin Hirsch

Friday 20th - Saturday 28th
September 2002



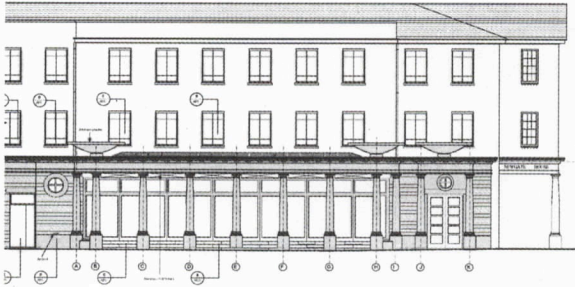
Tel: (01704) 530521/530460

LITTLE THEATRE

www.littletheatresouthport.co.uk

HOGHTON STREET • SOUTHPORT

REGISTERED CHARITY No. 221585



Full Architect's services:-

- Commercial / Office Premises.
- Restaurants.
- Industrial Units
- Retail Units.
- Shopfitting.
- Interior Design.
- Private Housing.
- Building Surveys.
- Land Surveys.

**CRAIG
FOSTER
ARCHITECTS**

North House
17 North John Street
Liverpool L2 5QY

Tel: 0151 236 0234

Fax: 0151 231 1112

e-mail: mail@craigfosterarchitect.co.uk



**Supplying the complete
range of legal
services**

SOLICITORS

**Maxwell
& Entwistle
& Byrne**

Contact **Michael Yates** on

01704 872156

Home and out of hours visits by arrangement

Chairman's Notes



A welcome from our Chairman

Welcome to our 2002-2003 season of plays. We think we have something to suit all tastes this year, ranging from farce to drama, comedy to mystery, from modern day to period setting. Our first play is a revival of *Bedroom Farce* which was first performed here in 1981.

As you can see, during the summer break we have refurbished the foyer in the fashion of the 1930s when our theatre was first opened. We do hope you approve. We thank you all for your continued support of the Southport Dramatic Club, now we hope you will just relax in the ambience of our lovely theatre and enjoy our productions.

Irene D. Trim M.B.E.
Chairman



CORGI
Registered

A FULL VARIETY PERFORMANCE...

Let me take the drama out of supplying and fitting your new beautiful bathroom, en-suite or kitchen. Or give a warm welcome to a new or serviced boiler/central heating system.

You will want to applaud the quality of my electrical or plumbing work - and gas work usually brings a standing ovation.

But seriously...I am a qualified and reliable tradesman who can complete work to certified standards, who turns up when agreed, who gives detailed free estimates, and who ensures that you are fully satisfied with the final outcome.

DO YOU NEED ANY PROMPTING?

PETER DAVIES

Telephone: 01704 505474

Mobile: 0976 263267

FOR ALL ELECTRICAL, PLUMBING AND GAS WORK

**The
Samaritans**

of Southport and District

CAN YOU HELP US?

We are here 24 hours a day to provide confidential support for the despairing or suicidal. We need your help to keep this vital service going:

VOLUNTEERS TO STAFF OUR PHONE LINES

FUNDRAISING

VOLUNTEERS FOR OUR CHARITY SHOP

DONATIONS OF GOODS FOR OUR SHOP

If you can help with any of these, please call us.

**The
Samaritans**

We are always here to listen

32 Union Street, Southport

Tel: 01704 538038 (24 hours)

Director's Notes



What an amazing experience this play has been - to direct eight enthusiastic actors and actresses on how to get in and out of bed for two and a half hours an evening, three times a week, for six weeks!

Sir Alan Ayckbourn, author of over 60 plays has the amazing ability to pin-point human frailty whilst, at the same time, making his audiences laugh at the ridiculous situations his characters find themselves in. Nothing is ever quite as it may first appear.

On describing how he sets about writing his plays, Sir Alan was recently quoted as saying he uses one single "idea" or "theme" and works backwards and forwards from that point, building up the plot and dialogue. The inspiration for "Bedroom Farce" came from a boring and long-winded dinner guest who hadn't known when to go home. He and his wife had literally found him, the following morning, curled up on a rug at the bottom of their bed having completely out-talked his hosts. We hope we do not "out-talk" you, our audience, or that you curl up and go to sleep!

Robin Hirsch
Director

BEDROOM FARCE



ORLEANS

Residential Home

- Full Central Heating
- Visitors' bedroom
- Regular visits by chiropodist, optician and dentist
- Nurse call system in every room
- Regular minibus outings
- Special diets catered for

6-8 Lathom Road, Southport PR9 0JA
Tel: 01704 530440



POLKA DOT.

BALLET, TAP, JAZZ

SHOES

LEOTARDS & DANCEWEAR

GYMWEAR

WONDERFUL IDEAS FOR DANCERS



4 Ryeground Lane, Formby
(Opposite The Grapes Hotel)
Telephone 01704 878138
Open Wed - Sat 10am - 5pm

BEDROOM FARCE



Alan Ayckbourn

Alan Ayckbourn was born in London in 1939. He has worked in theatre all his life as, variously, stage manager, sound technician, lighting technician, scene painter, prop maker, actor, writer and director. Most of these talents he developed or abandoned thanks to his mentor, Stephen Joseph, who first encouraged him to write. Almost all of the 60 plus plays Alan Ayckbourn has written to date received their first performance at the Stephen Joseph Theatre in Scarborough. More than 30 have subsequently been produced in the West End, at the Royal National Theatre or the RSC since his first hit, *Relatively Speaking*, opened at the Duke of York's Theatre in 1967.

His plays have won numerous awards - including seven London Evening Standard Awards. They have been translated into 35 languages and are performed on stage and television throughout the world. They have also been filmed in French and English. Seven of his plays have been seen on Broadway attracting two Tony nominations. In 1991, he received a Dramalogue Critics Award for his play *Henceforward*. His plays now feature on school curricula for study and examination

For *Bedroom Farce*, Alan Ayckbourn tweaked 1975 and came up with a winner for his 25th anniversary production which ran successfully in Scarborough before being a smash hit in the West End.

BEDROOM FARCE

By Alan Ayckbourn
Directed by Robin Hirsch

Cast

Ernest.....ERYL LLOYD PARRY

Delia.....SUE HARROP

Malcolm.....MATTHEW WOODHAMS

Kate.....SUE THOMAS

Nick.....STEVE PRITCHARD

Jan.....HELEN COOKSON

Trevor.....PETER FORSHAW

Susanne.....TRUDI HIRSCH

The action takes place in three bedrooms in the Mid 1970s

Act 1 Saturday evening 7pm

Act 2 A few moments later

There will be a 20 minute interval between acts.

Staging

Stage ManagerLINDSAY HAYWOOD

Assistant Stage Manager (Book)JUNE HUNTER

Assistant Stage Manager (Stage)MARIANNE HARDY

PropertiesPOPPY FLANAGAN

JENNY PARKER

LightingROY CARR

SoundBRIAN HODGE

WardrobeSDC TEAM

Set Constructed bySDC PRODUCTIONS

Scenic ArtistBOB JESSAMINE

Photography byNEIL HICKSON

The management reserves the right to refuse admission to the auditorium after curtain up, until a suitable opportunity occurs. First aid facilities are provided at this theatre by St John Ambulance Brigade, whose members give their services voluntarily.

•
Patrons are welcome in our licensed bar downstairs before and after tonight's performance.
Why not beat the rush and pre-order your interval drinks in the bar?

•
An induction loop is installed in this theatre for the benefit of hearing impaired patrons.
Please turn your hearing aid to 'T'.

•
At the end of tonight's performance you may leave by any of the exits, all of which will be open.
In an emergency, this theatre can be emptied in three minutes or less if everyone leaves in an orderly manner.

•
Smoking is prohibited in the auditorium.

THEATRE LICENSEE, PETER BURROUGHS.

QUIZ

As a lot of Bedroom Farce involves showing (or not showing) bits of the body, here's a quick quiz about the Human Body:

- 1 The cortex and medulla are parts of what organ?
- 2 How many pairs of ribs does a human body have?
- 3 Each body cell contains how many chromosomes?
- 4 Phalanges are bones found in a human?
- 5 The gluteus maximus muscle is the bulk of the?

For answers see bottom of page 18



SDC PRODUCTIONS 02-03



18th October - 26th October 2002

THE HERBAL BED

by Peter Whelan, directed by Richard Woodward

22nd November - 30th November 2002

BUSINESS AFFAIRS

*by John Chapman and Jeremy Lloyd,
directed by Hilary Thomson
Sponsored by Master Lock and Safe*

19th December 2002 - 5th January 2003

ROBIN HOOD AND THE BABES IN THE WOOD

*directed by Les Gomersall and Mandy Evans
Sponsored by NatWest Bank*

24th January - 1st February 2003

NOBODY'S PERFECT

*by Simon Williams, directed by Ray Mann
Sponsored by Duncan Sheard & Glass*

28th February - 8th March 2003

THE PERFECT MURDER

by Hugh Jane, directed by Doug Carrick

28th March - 5th April 2003

AMY'S VIEW

*by David Hare
directed by John Sharp
Sponsored by Mitchell & Wright Printers Limited*

25th April - 3rd May 2003

NUDE WITH VIOLIN

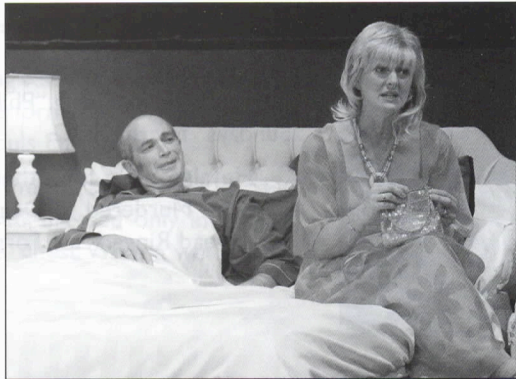
*by Noel Coward
directed by Margaret Mann
Sponsored by Hedley & Company*

3rd June - 7th June 2003

LOOT

*by Simon Williams
directed by Alistair Hewitt*

BEDROOM FARCE



BEDROOM FARCE

Cast



Robin Hirsch (*Director*)

Robin has been a devil for punishment, having been a member since her 18th birthday. Since then she has had immeasurable pleasure from acting and directing and wishes to give credit and thanks to a long-suffering family who have supported her little idiosyncrasies over the years!

Her finest hour was being asked by a fellow passenger off a Manchester flight, on arrival at JFK airport in New York. "Aren't you the lady with the tea bags at the Southport Little Theatre?" Explanation given on request!



Eryl Lloyd Parry (*Ernest*)

Specialising in old age as old codgers, he has played in many shows including "Philadelphia Story" and "A Month of Sundays" for the SDC.

He also plays for other local societies and has recently been in "Murdered to Death" for Sefton Theatre Company and "Dead Ringer" for Formby Little Theatre.



Sue Harrop (*Delia*)

Sue has been involved in amateur theatre in Southport for more years than she cares to mention here and a member of the SDC in particular for about the last nine years.

This is her second Ayckbourn play and she is delighted and amused to be involved in a production which involves a substantial amount of eating and lying around in bed, plus various cast members divesting themselves of apparel here and there.

BEDROOM FARCE

Cast

Matthew Woodhams (*Malcolm*)

After playing a series of nerds, fools and idiots for the past five years, Matthew has noticed a worrying tendency that the play selection and casting committee is now casting him in roles which require him to shed clothes on stage.

Matthew has really enjoyed being with Robin again and all the cast and crew, but would like to apologise to Peter for beating him up on stage (although as he fights with Trudi he probably deserves it!)



Sue Thomas (*Kate*)

Susan is delighted to be playing Kate, in her first play with the SDC. She has previously performed with Too Friendly Theatre Company and the All Souls Dramatic.

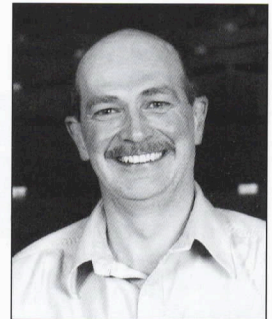
However, she never thought the initiation into the SDC would involve leaping across a bed, dressed only in a towel and stroking Matthew Woodhams' chest. What a welcome!



Steve Pritchard (*Nick*)

Since joining the SDC four years ago Steve has had great fun working with a fine bunch of actors. Not that he has stopped appearing in musicals and regularly for the Hoghton Players.

He will shortly be playing Sam for the Birkdale Orpheus in "Copacabana" and mercifully not in bed for the whole performance!



BEDROOM FARCE

Cast



Helen Cookson (*Jan*)

Helen is making her third appearance in as many seasons having played in “Philadelphia Story” and “Two and Two Together”

She is very pleased to be working with Robin again and is relieved that at least in this play, unlike the other two, she doesn't have to take her clothes off on stage (although some of our audience may be disappointed -Ed).



Peter Forshaw (*Trevor*)

Having appeared in last season's closer “An Absolute Turkey”, Peter makes an all-too-swift return to the SDC stage for tonight's production. Whilst he has greatly enjoyed working on this classic Ayckbourn play, he would like to publicly apologise for the injuries his character has caused to Trudi Hirsch over the seven week rehearsal period. Peter would also like to acknowledge the assistance of his father in providing authentic period underwear for this evening's production!!



Trudi Hirsch (*Susanne*)

Trudi is thrilled to be back on stage since her last performance as the “Heiress” and is certain that studying for her accountancy exams for the last two years has been excellent training for the neurotic, nervous character she portrays this evening.

Trudi is delighted to be directed by her mother again - the only previous time being “On the Razzle” in 1989.

The SDC has now been in existence for over 80 years, at home in the Little Theatre for over 60 years and now forms a major part of the arts scene in Merseyside.

Everyone knows about the SDC's warm welcome and outstanding productions, but what about the secrets of the SDC. For instance what was the SDC's original name, what is the theatre's ghost fondly known as, what did the theatre do during World War II and who once bought throat pastilles for the Beatles?

To learn more secrets of the SDC watch this space throughout the season. There is one fact we all already know, the success of the SDC is down to you, the members, patrons and subscribers of the SDC. Give yourselves a pat on the back.

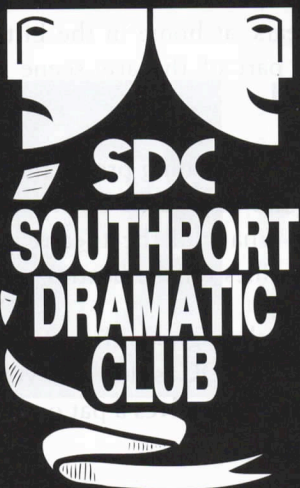
SDC-THE THEATRE EXPERIENCE.

TOP TEN

If the flares and distressing colours of the costumes brought memories of the 70s back, sit back and think how many of the top ten films of the decade you saw.

1	Star Wars	1977
2	Jaws	1975
3	Close Encounters of the Third Kind	1977
4	Moonraker	1979
5	The Spy Who Loved Me	1977
6	The Exorcist	1973
7	The Sting	1973
8	Grease	1978
9	The Godfather	1972
10	Saturday Night Fever	1977

P.S. Our ghost is called Claude, and don't worry he is friendly!



**The Little
Theatre**

**Dates
for
your
Diary**

Hoghton Street,
Southport.
Telephone:
(01704)
530521/530460

2nd - 5th October 2002

The Devil at Midnight

A Sefton Theatre Company production

18th October - 26th October 2002

THE HERBAL BED

by Peter Whelan, directed by Richard Woodward

30th October - 2nd November 2002

Annie

A Maghull Amateur Operatic Society production

8th - 9th November 2002

Pam Bamber Dance School

22nd November - 30th November 2002

BUSINESS AFFAIRS

by John Chapman and Jeremy Lloyd,

directed by Hilary Thomson

Sponsored by Master Lock and Safe

19th December 2002 - 5th January 2003

**ROBIN HOOD AND THE BABES
IN THE WOOD**

directed by Les Gomersall and Mandy Evans

Sponsored by NatWest Bank

24th January - 1st February 2003

NOBODY'S PERFECT

by Simon Williams, directed by Ray Mann

Sponsored by Duncan Sheard & Glass

8th February 2003

Hesketh Brass Band Concert

12th - 15th February 2003

The Unexpected Guest

A Sefton Theatre Company production

28th February - 8th March 2003

THE PERFECT MURDER

by Hugh Jane, directed by Doug Carrick

Answers for quiz on page 12: 1. Kidney, 2. 12, 3. 46, 4. Toes, 5. Buttocks.



SOUTHPORT
DRAMATIC CLUB



Presents The Emotional Thriller

The Herbal Bed

By Peter Whelan

Directed By Richard Woodward

Friday 18th - Saturday 26th
October 2002 7.45pm

Box Office:

12th October 11am - 1pm

14th - 17th October 11am - 5pm

18th - 26th October 11am - 7.45pm

Tel: (01704) 530521/530460

LITTLE THEATRE

www.littletheatresouthport.co.uk

HOGHTON STREET • SOUTHPORT
REGISTERED CHARITY NO. 221585



It's your life...

Financial planning should never be a case of 'Better the Devil you know!'
Who's your Guardian Angel?

Ludlow & Co Independent Financial Advisors • 172 Lord Street • Southport PR9 0QA
T: 01704 500324 • F: 01704 500965 • E: Ludlow@ludco.co.uk

Regulated by the Personal Investment Authority



Ludlow