



SOUTHPORT DRAMATIC CLUB



Presents

The famous award-winning drama

Shadowlands

Written by William Nicholson

Directed by Poppy Flanagan

*Friday 22nd February to
Saturday 2nd March 2002*



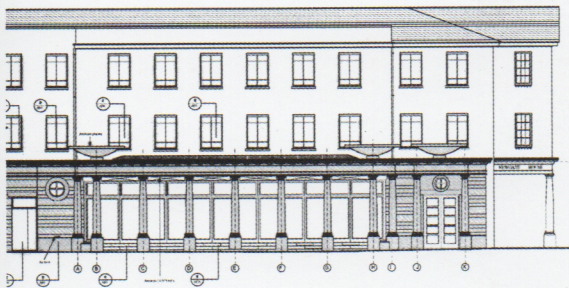
Tel: (01704) 530521/530460

LITTLE THEATRE

HOGHTON STREET • SOUTHPORT

REGISTERED CHARITY No. 221585

www.littletheatresouthport.co.uk



Full Architect's services:-

- Commercial / Office Premises.
- Restaurants.
- Industrial Units
- Retail Units.
- Shopfitting.
- Interior Design.
- Private Housing.
- Building Surveys.
- Land Surveys.

CRAIG FOSTER ARCHITECT

State House, 27 Dale Street,
Liverpool, L2 4UR.
Tel : 0151 236 0234



Supplying the complete
range of legal
services

SOLICITORS

Maxwell
& Entwistle
& Byrne

Contact **Michael Yates** on

01704 872156

Home and out of hours visits by arrangement

DIRECTOR'S NOTES

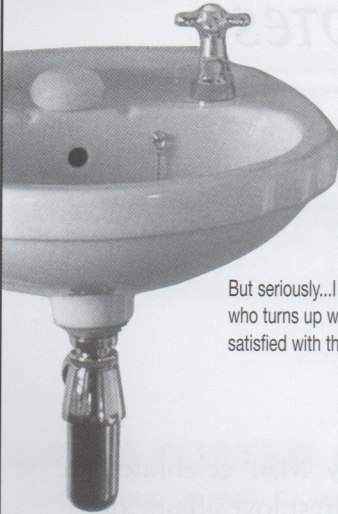


On February 14th 1999 the Sunday Mail celebrated Valentine's Day with a list of the 100 greatest love affairs "of the millennium". C. S. Lewis and Joy Davidman were placed in 26th place with John and Yoko at 17th and Paul and Linda in 6th place.. The number one spot was held by Edward and Mrs Simpson.

William Nicholson's "Shadowlands" first came to life on TV, was then adapted for the stage and finally hit the big screen with Richard Attenborough's film starring Anthony Hopkins and Deborah Winger. In the original stage production the roles of Lewis and Joy were played by Nigel Hawthorne and Jane Lapotaire.

"Shadowlands" is a demanding and challenging play to mount for all departments within any dramatic society. My thanks go to everyone involved in getting this play onto the stage and particularly to the hard work, enthusiasm and commitment of the cast. I hope you find this evening's performance an enjoyable and moving experience.

Poppy Flanagan
Director



CORGI
Registered

A FULL VARIETY PERFORMANCE...

Let me take the drama out of supplying and fitting your new beautiful bathroom, en-suite or kitchen. Or give a warm welcome to a new or serviced boiler/central heating system.

You will want to applaud the quality of my electrical or plumbing work - and gas work usually brings a standing ovation.

But seriously...I am a qualified and reliable tradesman who can complete work to certified standards, who turns up when agreed, who gives detailed free estimates, and who ensures that you are fully satisfied with the final outcome.

DO YOU NEED ANY PROMPTING?

PETER DAVIES

Telephone: 01704 505474

Mobile: 0976 263267

FOR ALL ELECTRICAL, PLUMBING AND GAS WORK



Head First

Unisex Hairdresser's

(closed Monday)

4a Ashley Road

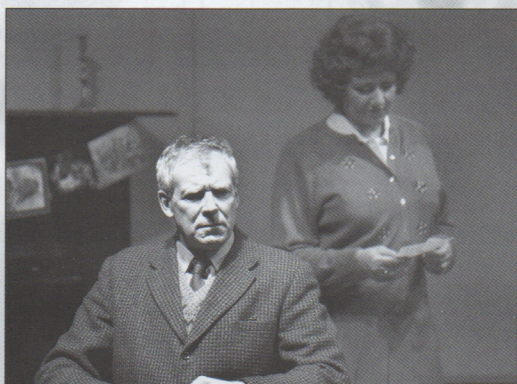
(off Sussex Road)

Southport PR9 0RB

Telephone

(01704) 544624

Shadowlands



ORLEANS

Residential Home

- Full Central Heating
- Visitors' bedroom
- Regular visits by chiropodist, optician and dentist
- Nurse call system in every room
- Regular minibus outings
- Special diets catered for

6-8 Lathom Road, Southport PR9 0JA
Tel: 01704 530440



POLKA DOT.

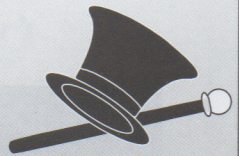
BALLET, TAP, JAZZ

SHOES

LEOTARDS & DANCEWEAR

GYMWEAR

WONDERFUL IDEAS FOR DANCERS



4 Ryeground Lane, Formby

(Opposite The Grapes Hotel)

Telephone 01704 878138

Open Wed - Sat 10am - 5pm

William Nicholson

William Nicholson was born in 1948. He went to a Roman Catholic monastic school in the countryside near Bath.

Nicholson told an interview for Radio 4's "Go for it" children's book club that his first inspiration for writing came from Ian Fleming's "James Bond" stories

After producing many documentaries in the 70's and 80's for the BBC, he is now a very successful screenwriter in Hollywood. Films of William Nicholson's include tonight's, "*Shadowlands*", which starred Anthony Hopkins and more recently "*Gladiator*", starring Russell Crowe.

"*The Wind Singer*" is his first children's book. Nicholson says that he loves the chance to create "an imaginary place that exists on its own terms".

The second book in "*The Wind on Fire Trilogy*" is published this month. It is called "*Slaves of the Mastery*". Nicholson says that he won't let a film be made of "*The Wind on Fire*" books until all of them are published.

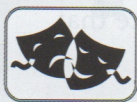
William Nicholson lives in Sussex and is married to another writer, Virginia Bell and they have three children.

ROAD RANGE

Authorised Mercedes-Benz & Porsche Car Dealerships



Mercedes-Benz



ENCORE!



ROAD RANGE

205 Liverpool Road, Birkdale, Southport, PR8 4PH

FREEPHONE: 0800 027 6230

www.roadrange.co.uk

Liverpool, Southport, Wirral & Beyond...

"We have the drive to match your ambition"

Shadowlands



Shadowlands

By William Nicholson
Directed by Poppy Flanagan

Cast

C. S. LewisBRIAN BENTLEY
Major W. H. Lewis (Warnie)HUGH WOLFSON
Professor Christopher RileyPETER HESLIN
Rev. "Harry" HarringtonJIM LONGWORTH
Alan Gregg / Doctor / RegistrarPAUL EDGE
Dr. Maurice Oakley / Waiter / PriestPETER SLATER
Joy Gresham, nee DavidmanKATHY FELTON-AKSOY
DouglasHENRY BIRCH
Nurse / Registrar's ClerkSUSAN McCORMICK

The action takes place in Oxford in the 1950's

There will be a 20 minute break during the performance.

Staging

Stage Manager	CHRIS RATCLIFFE
Assistant Stage Manager	SUSAN McCORMICK
Assistant Stage Manager (Book)	JEAN WATKINSON
Properties	SHEELAGH WILLERS
	JENNY OLIVER
	NATALIE SIMMONS
Lighting	TONY BERRY
	IAN McCALLUM
Sound	ANDREW GREGSON
Wardrobe	JAMES HUGHES-ALTY & CAST
Set Constructed by	SDC PRODUCTION TEAM
Scenic Artist	BOB JESSAMINE
Stage Crew	BERNIE HOWAT
	PETER BRINDLE
	CHRIS APPLETON
	DAVE MORELAND-SMITH
Flymen	PETE BESWICK
	GRAHAM DAVIES
Photography by	NEIL HICKSON

ACKNOWLEDGEMENTS

Special thanks to The Local Health Authority Home Loans Department
for the loan of the bed and screen / hospital furniture.

The management reserves the right to refuse admission to the auditorium after curtain up, until a suitable opportunity occurs. First aid facilities are provided at this theatre by St John Ambulance Brigade, whose members give their services voluntarily.

**Patrons are welcome in our licensed bar downstairs before and after tonight's performance.
Why not beat the rush and pre-order your interval drinks in the bar?**

An induction loop is installed in this theatre for the benefit of hearing impaired patrons.
Please turn your hearing aid to 'T'.

At the end of tonight's performance you may leave by any of the exits, all of which will be open.
In an emergency, this theatre can be emptied in three minutes or less if everyone leaves in an orderly manner.

Smoking is prohibited in the auditorium.

THEATRE LICENSEE. PETER BURROUGHS.

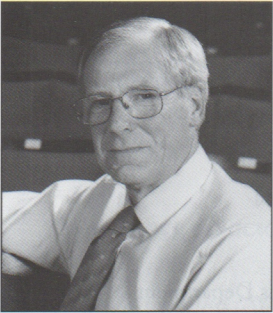
Shadowlands Cast



Poppy Flanagan (Director)

Poppy joined SDC in 1992 and has played a number of roles, most recently Kate in "Broadway Bound" which opened this season.

Directing is a new venture for Poppy and Shadowlands is the second play she has directed for SDC, the first being "Living Together" by Sir Alan Ayckbourn staged last season.



Brian Bentley (C. S. Lewis)

Brian has recently appeared in "Hay Fever", "The Merry Wives of Windsor" and "The Business of Murder". He has earlier memories of "My Friend Miss Flint", "Small Hours" and "Dial M for Murder".

When not involved in a play he spends his time waiting for the phone call, mending pictures and delivering Meals on Wheels.



Kathy Felton-Aksoy (Joy Gresham, nee Davidman)

Kathy has been acting for some 25 years in a variety of roles, both on stage and for BBC local radio. Her most recent roles for SDC include the man-eating Myra in "Hayfever", Lesley in "Talking Heads" and Ruth in "Living Together".

She says that despite the storyline of the play, rehearsals have often been hilarious, and she has enjoyed being part of a very talented team.

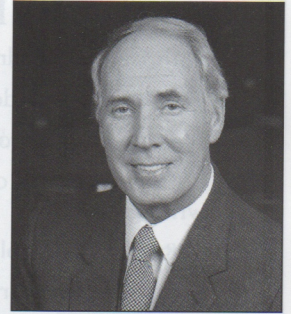
Shadowlands Cast

Peter Heslin (Professor Christopher Riley)

Peter has been involved both backstage and onstage with the SDC for a number of years. He has taken both large and small parts at the Little including parts in "Deadringers", "Strictly for the Birds", "The Small Hours" and "Ladies Who Lunch". He has also appeared in musicals for local operatic societies. He has happy memories of "Kiss Me Kate" and "South Pacific".

As a member of Sefton Theatre Co. he played the villain in "Murder at the Vicarage" and played more serious roles in "David Copperfield" and more recently "The Crucible".

"Shadowlands" is a more serious drama and he is looking forward to the challenge of appearing in this acclaimed production.



Hugh Wolfson (Major W.H. Lewis "Warnie")

Hugh came to Southport in 1984, and moved to Manchester in 1987. He was in three shows for SDC and four for other Southport societies before leaving, but ten since.

Recent favourites were "Katherine Howard", "Ladies Who Lunch", "Out of Order" and "Toad of Toad Hall. He is also a member of Altrincham Garrick, and directed for Sefton, Stage 80 and Altrincham Garrick.

Offstage, Hugh is an Inspector of Health & Safety.

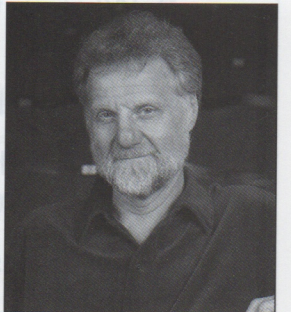


Jim Longworth (Rev. "Harry" Harrington)

Jim's recent theatrical appearances include:

Old King Coal in "Mother Goose", Dr. Bradman in "Blithe Spirit" and Sir Thomas Wriorthsley in "Katherine Howard".

This is his second production with the SDC.



MOST EXPENSIVE PRICES OF FURNITURE EVER SOLD AT AUCTION

1.	18th Century "Badminton Cabinet"	£8,580,000
2.	1760s mahogany desk	£7,786,358
3.	Mahogany and ebony chest of drawers	£1,277,357
4.	c.1760 George III ormolu-mounted mahogany dressing and writing table	£1,100,000
5.	1784 black and gold lacquer secretaire	£990,000
6.	Louis XV marquetry and ormolu corner cabinet	£844,440
7.	c.1705 black japanned bureau-bookcase, formerly owned by Queen Mary	£463,666
8.	Mahogany wing armchair	£420,000
9.	George II bombe commode	£407,000
10.	Louis XVI ormolu mounted ebony bureau	£240,000

The Earth

- 1) In what year was the summit of Mount Everest first reached?
- 2) What percentage of the earth's surface is covered by the oceans?
- 3) What is the deepest point of the Mariana Ocean Trench?
- 4) What is the equatorial circumference of the Earth?
- 5) What is the approximate distance between the north pole and the magnetic north pole?

Answers on the bottom of page 18

Shadowlands Cast

Paul Edge (Alan Gregg / Doctor / Registrar)

Paul is appearing in his first play for the SDC. He is a regular performer in musicals in Southport, being a member of the Birkdale Orpheus Society. He has appeared in "Mack & Mabel", "Seven Brides for Seven Brothers" and "Clamity Jane", to name just a few.

He is looking forward to appearing in his biggest role so far, as dad to his and Karen's first child, due in the summer.



Henry Birch (Douglas, Joy's son)

As a student of Julie Ann Carr's, Henry has won prizes in local singing festivals. He has taken part in many local productions, with SONG, JTW and SAOS.

He is to play the title role in Birkdale Orpheus's production of "Oliver", here at the Little Theatre in May. Henry is very much looking forward to his first role in an SDC production.



Susan McCormick (Nurse / Registrar's Clerk)

Susan's debut with the SDC was the lead in one act "Out of the Darkness", (She then secured a part in the ill-fated bar production of "Ackrington Pals"). She has skidded across the stage in the chorus of "Cinderella" and had a go at Besty-Jane in "Spring and Port Wine"! Susan is delighted to be three people in this play whilst maintaining her roles of ASM and chaperone to wee Henry!



Peter Slater (Dr. Maurice Oakley / Waiter / Priest)

"Shadowlands" marks Pete's debut with SDC, but he has appeared on Southport stages many times in performances ranging from farce (John Smith in "Run for your Wife"), to satirical social commentary (member of Greek chorus in "Fireraisers"). In panto he has played a very short giant and a fairly tall dwarf. Thankfully Pete does not sing in "Shadowlands".





The Little Theatre

Dates for Your Diary

Hoghton Street,
Southport.
Telephone:
(01704)
530521/530460

Wednesday 6th March
to Saturday 9th March 2002
'The Railway Children'
by **E. E. Nesbitt**
directed by Robin Hirsch
an SDC Youth Production

Wednesday 13th March to Saturday 16th March 2002
'The Importance of Being Earnest'
by **Oscar Wilde**
A Waterloo & Crosby Society Production

Saturday 23rd March 2002
Hesketh Bank Silver Band Concert

Friday 5th April to Saturday 13th April 2002
'Gym and Tonic'
by **John Godber**
A dark and perceptive comedy directed by Les Gomersall
an SDC Production
Sponsored by Royal Bank of Scotland

Friday 3rd May to Saturday 11th May 2002
'An Absolute Turkey'
by **Georges Feydeau**
Translated by Sir Peter Hall and Nicki Frei
The classic French farce directed by David Charters
an SDC Production
Sponsored by Mitchell & Wright Printers Ltd.

Saturday 18th May to Saturday 25th May 2002
'Oliver'
a Birkdale Orpheus Society Production

Wednesday 5th June to Saturday 8th June 2002
'Peggy For You'
by **Alan Plater**
directed by Hugh Wolfson
an SDC Bar Production

Wednesday 12th June to Saturday 15th June 2002
'Camelot'
directed by **Eric Rimmer**
a Maghull Operatic Society Production



Southport Dramatic Club
Youth Theatre



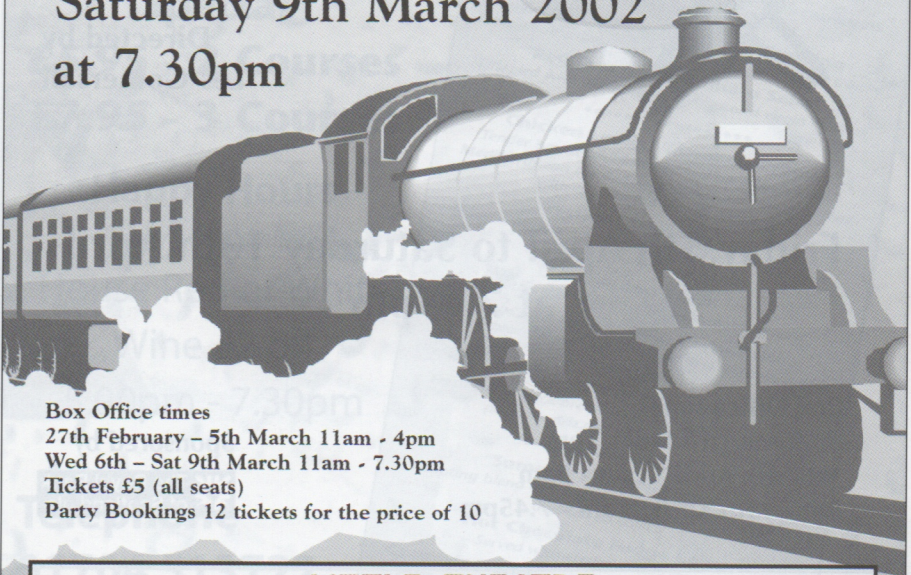
presents the heart warming classic

The Railway Children

Written by E. E. Nesbitt
Adapted by Dave Simpson

Directed by
Robin Hirsch

Wednesday 6th to
Saturday 9th March 2002
at 7.30pm



Box Office times
27th February – 5th March 11am - 4pm
Wed 6th – Sat 9th March 11am - 7.30pm
Tickets £5 (all seats)
Party Bookings 12 tickets for the price of 10

Tel: (01704) 530521/530460

LITTLE THEATRE

www.littletheatresouthport.co.uk

HOGHTON STREET • SOUTHPORT

REGISTERED CHARITY NO. 221585



SOUTHPORT DRAMATIC CLUB



presents
John Godber's
black comedy

Gym & Tonic

Directed by
Les Gomersall

Friday 5th April to Saturday 13th April
at 7.45pm

Box Office Times

30th March 11am - 1pm
1st - 4th April 11am - 5pm
5th - 13th April 11am - 7.45pm

Sponsored by



Telephone:
Tel: (01704) 530521/530460

LITTLE THEATRE

HOGHTON STREET • SOUTHPORT
REGISTERED CHARITY No. 221585

www.littletheatresouthport.co.uk

Society Production



**Seeing a show?
Make a night of it!
Have a meal - See a show**

A stylish place to meet, enjoy a meal, a superb pint, a quality glass of wine, a speciality cocktail or simply the best cup of coffee.

Open 9.30am - 11.00pm 7 Days a week

Serving food, drinks & coffee all day

**Stage Door
Special**

£5.95 - 2 Courses

£7.95 - 3 Courses

Happy Hours

(only when dining)

House Red or White

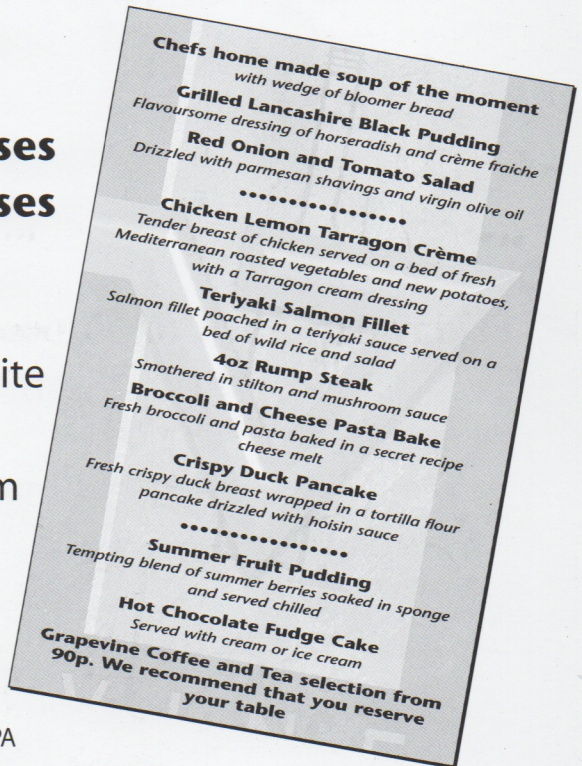
Wine £2 off

5.00pm - 7.30pm

Telephone

01704 513722

20A/B Hoghton Street
Southport, Merseyside PR9 0PA
(In front of the Little Theatre)





It's your life...

Financial planning should never be a case of 'Better the Devil you know!'
Who's your Guardian Angel?

Ludlow & Co Independent Financial Advisors • 172 Lord Street • Southport PR9 0QA
T: 01704 500324 • F: 01704 500965 • E: Ludlow@ludco.co.uk

Regulated by the Personal Investment Authority



Ludlow