



SOUTHPORT DRAMATIC CLUB

SOUTHPORT DRAMATIC CLUB
**1920
2000**
80th ANNIVERSARY SEASON

80th Anniversary Season

SPONSORED BY
HSBC 

**SIMON BRETT'S
THRILLER**

**DIRECTED BY
RAY MANN**

SILHOUETTE

FRI-SAT

23-31 MARCH 2001

7.45PM

Tel: (01704) 530521/530460

LITTLE THEATRE

www.littletheatresouthport.co.uk

HOGHTON STREET • SOUTHPORT

REGISTERED CHARITY No. 221585

Services for Private Clients are provided by HSBC Trust Company (UK) Limited, which is regulated by the Personal Investment Authority. EF/06

We are pleased to support

The Little Theatre's

Production of

SILHOUETTE

by Simon Brett

For further information about our tailored investment and independent advisory services for Private Clients, please contact: Tony Davies, Senior Private Client Manager, HSBC Trust Company (UK) Limited, Private Clients, 4 Dale Street, Liverpool L69 2BZ or call 0151 801 2188



YOUR WORLD OF FINANCIAL SERVICES

Issued by HSBC Trust Company (UK) Limited

DIRECTOR'S NOTES



SILHOUETTE

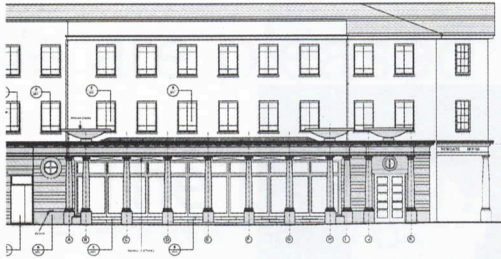
DECEPTION IS AT THE HEART OF SIMON BRETT'S INTRIGUING PLAY. APPEARANCES ARE PARTICULARLY DECEPTIVE. ARE ANY OF THE CHARACTERS WHAT THEY SEEM TO BE?

WE TRUST YOU WILL HAVE AN INTERESTING EVENING LOOKING FOR CLUES, WATCHING FOR INCONSISTENCIES, SPOTTING THE OUTRIGHT LIES. FOR OUR PART WE SHALL BE HAPPY IF YOU CATCH THE ODD 'RED HERRING'.

TO ADD TO THE INTEREST, ACT ONE DEPICTS WHAT HAPPENS AFTER THE CRIME HAS BEEN COMMITTED. ACT TWO THEN REVEALS, *BY GOING BACK IN TIME*, WHAT ACTUALLY TRANSPIRED!

HAPPY SLEUTHING!

RAY MANN



- Full Architect's services:-
- Commercial / Office Premises.
 - Restaurants.
 - Industrial Units
 - Retail Units.
 - Shopfitting.
 - Interior Design.
 - Private Housing.
 - Building Surveys.
 - Land Surveys.

CRAIG FOSTER ARCHITECT

State House, 22 Dale Street,
Liverpool, L2 4UR.
Tel : 0151 236 0234

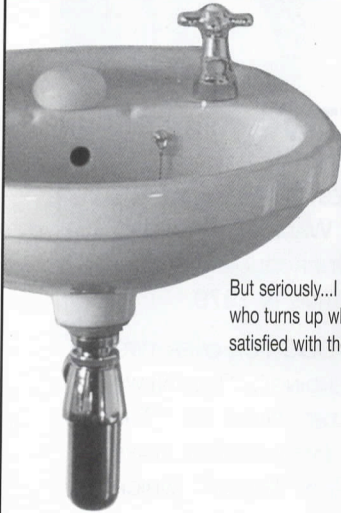


Supplying the complete
range of legal
services



Contact **Michael Yates** on
01704 872156

Home and out of hours visits by arrangement



CORGI
Registered

A FULL VARIETY PERFORMANCE...

Let me take the drama out of supplying and fitting your new beautiful bathroom, en-suite or kitchen. Or give a warm welcome to a new or serviced boiler/central heating system.

You will want to applaud the quality of my electrical or plumbing work - and gas work usually brings a standing ovation.

But seriously...I am a qualified and reliable tradesman who can complete work to certified standards, who turns up when agreed, who gives detailed free estimates, and who ensures that you are fully satisfied with the final outcome.

DO YOU NEED ANY PROMPTING?

PETER DAVIES

Telephone: 01704 505474

Mobile: 0976 263267

FOR ALL ELECTRICAL, PLUMBING AND GAS WORK

separates

scarves

Co-ordinating range of ladies' fashions

Divia FASHIONS

sizes 12-22

Proprietor: Barbara Beardsell

4 Ryeground Lane

Formby

Tel: 01704 878138

hosiery

(opposite The Grapes)

jewellery

SIMON BRETT

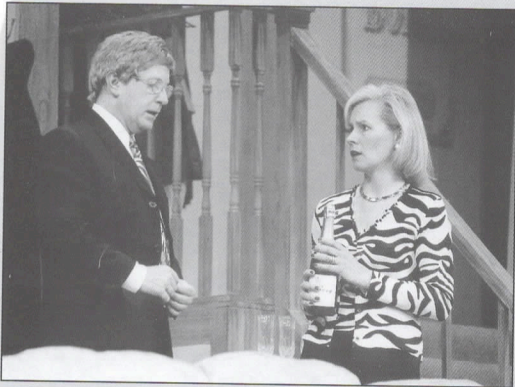
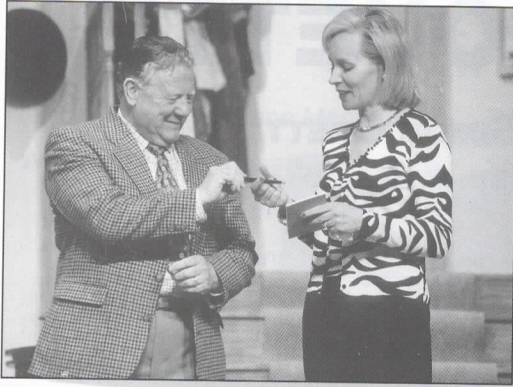
SIMON BRETT WAS BORN IN 1945 IN WORCESTER PARK, SURREY AND EARNED A B.A. WITH HONOURS FROM WADHAM COLLEGE, OXFORD. HE WORKED AS A LIGHT ENTERTAINMENT PRODUCER IN RADIO AND TELEVISION BEFORE TAKING UP WRITING FULL TIME IN 1979.

SIMON BRETT HAS BEEN INVOLVED WITH THE BBC FOR OVER TWO DECADES AS A PRODUCER (HE STARTED "WEEKENDING", "THE NEWS HUDDLINES" AND WAS THE PRODUCER FOR THE PILOT OF "THE HITCHHIKERS' GUIDE TO THE GALAXY"), WRITER (AMONG MANY PLAYS AND STORIES, HE CREATED AND WROTE "AFTER HENRY" WHICH TRANSFERRED TO TELEVISION), AND CREATOR AND QUIZMASTER OF THE RADIO 4 MURDER MYSTERY PANEL GAME "FOUL PLAY".

HE HAS WRITTEN OVER 50 DETECTIVE NOVELS, 17 OF THEM FEATURING AN UNSUCCESSFUL ACTOR, CHARLES PARIS, WHOSE LIFE TEETERS ON THE EDGE OF WHISKEY-SODDEN CHAOS. THE BOOKS ARE WITTY DIVERSIONS WITH A VARIETY OF ACTING BACKGROUNDS AND AN UNDERLYING STREAK OF COMPASSION. THEIR CHARM DERIVES NOT SO MUCH FROM THEIR PLOTS BUT FROM THEIR SETTINGS AND FROM PARIS HIMSELF, WHO AGES THROUGH THE SERIES, AND WHOSE RECORD AS A DETECTIVE IS SCARCELY MORE DISTINGUISHED THAN HIS RECORD AS AN ACTOR.

AS WELL AS THE CHARLES PARIS AND MRS PARGETER (A WIDOWED PENSIONER WITH A PENCHANT FOR MAYHEM) DETECTIVE SERIES, HE IS ALSO THE AUTHOR OF THE BEST-SELLING "HOW TO BE A LITTLE SOD". HIS MUCH DARKER CRIME NOVEL "A SHOCK TO THE SYSTEM", WHOSE AMORAL HERO SHARES COMMON GROUND WITH HIGHSMITH'S RIPLEY, WAS FILMED STARRING MICHAEL CAINE.

MARRIED WITH THREE CHILDREN, HE LIVES IN AN AGATHA CHRISTIE-STYLE VILLAGE ON THE SOUTH DOWNS. TWO TELEVISION COMPANIES ARE CURRENTLY CONSIDERING HIS NOVELS FOR ADAPTATION.



SILHOUETTE

BY SIMON BRETT
DIRECTED BY RAY MANN

Cast

Martin PowellARNOLD GORSE

Detective Inspector BrutonMIKE STOWELL

Celia WallisSANDRA UNSWORTH

Detective Sergeant FisherNORMAN HOPE

W.P.C. LeachEMMA HITCHCOCK

W.P.C. CarterBRENDA WHELAN

Neville SmallwoodTED BULLEN

The action takes place in Martin Powell's and Celia Wallis' country house in West Sussex.

Time:- A Friday night in October.

Act 1 About 9.15pm

There will be an interval of 20 minutes between the two Acts

Act 2 7.30pm "Earlier" the same evening

Staging

Stage ManagerROY CARR
Assistant Stage Manager (Book)SHEILA FURLONG
Lighting DesignTONY BERRY
Lighting OperatorCHRIS BERRY
ArmourerSYD COLEY
SoundDAVID MORELAND-SMITH
PropertiesJULIA WHELAN
BRENDA WHELAN
WardrobeJAMES HUGHES-ALTY & CAST
Special Make-up EffectsJAMES HUGHES-ALTY
Set Designed and Built bySDC PRODUCTION TEAM
Scenic ArtistBOB JESSAMINE
Photography byNEIL HICKSON

Acknowledgements

Savalot (UK) Ltd for the chair and desk. Shelbourne Hotel Southport for Posters/Pictures.

Warning Notice: There will be gun shots during this performance.

The management reserves the right to refuse admission to the auditorium after curtain up, until a suitable opportunity occurs. First aid facilities are provided at this theatre by St John Ambulance Brigade, whose members give their services voluntarily.

Patrons are welcome in our licensed bar downstairs before and after tonight's performance.

Why not beat the rush and pre-order your interval drinks in the bar?

An induction loop is installed in this theatre for the benefit of hearing impaired patrons.

Please turn your hearing aid to 'T'.

At the end of tonight's performance you may leave by any of the exits, all of which will be open. In an emergency, this theatre can be emptied in three minutes or less if everyone leaves in an orderly manner.

Smoking is prohibited in the auditorium.

THEATRE LICENSEE CHARLES R. MOOK



Head First

Unisex Hairdresser's

(closed Monday)

4a Ashley Road

(off Sussex Road)

Southport PR9 0RB

Telephone

(01704) 544624

~ Hewitts ~

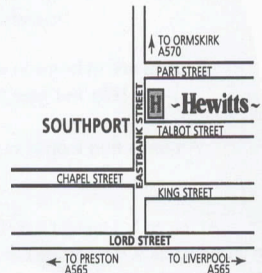
of Southport

Exceeding your Expectations

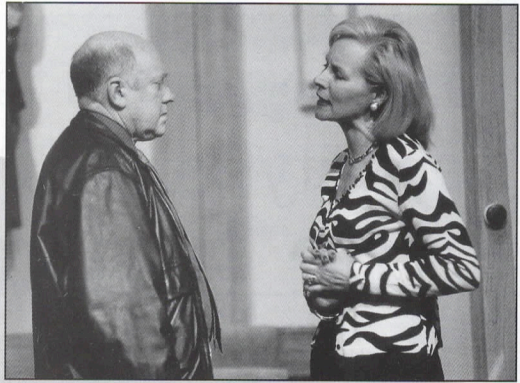
Bedroom Furniture - Dining Furniture

Upholstery - Carpets

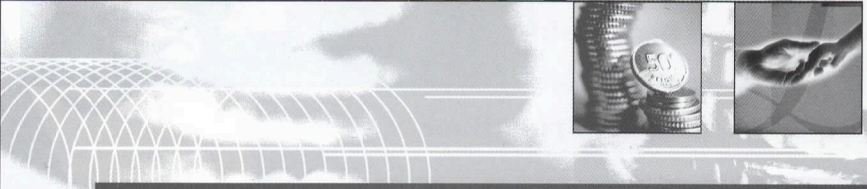
Curtains - Interior Design



42-46 Eastbank Street, Southport, PR8 1ES Tel: (01704) 535000 Fax: (01704) 536803



Security for the future

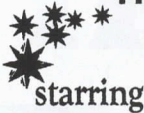


Ludlow & Co Independent Financial Advisors 172 Lord Street • Southport • PR9 0QA
T: 01704 500324 • F: 01704 500965 • E: Ludlow@ludco.co.uk

Regulated by the Personal Investment Authority.

Barnes Hazel
PRESENTS

AN EXTRAVAGANZA OF SPECTACLES



starring

Stunning range of fashion
frames

Dazzling prices

Impeccable service

What the Critics say

"Choosing my spectacles was a pleasure" ^{JH}

"I certainly will go back again" ^{MM}

"Amazing the pounds I saved" ^{AC}

with

Roberto Rossini
and the Country range frames
10% discount on these designer frames with this advert

featuring

All in one price for Frame and Lenses
FREE Children's Spectacles
Student's discount

Barnes Hazel
Ophthalmic Opticians

Opposite Little Theatre Southport 01704 533929

BOOKING NOW

SOUTHPORT DRAMATIC CLUB

Wish to thank the following restaurants
for supporting 'The Disabled Access Appeal'

AUBERGE BISTRO
MAMMA MIA PIZZERIA
MON AMIS
RUETERS ON HOGHTON
RONNIE'S BISTRO BAR
SOME PLACE ELSE

Please take time to view the display in the
Theatre Bar when in position.

UK TEXTILES LTD

*This is an exciting new opening
Trade prices with an invitation to all*

Open Monday - Saturday 9am - 6pm, Sunday 11am - 4pm
All items are grade 1 quality and upmarket design

Continental Quilts from £9.99
Duvet covers from £10.99
Hand towels from £2.99
Football Club and cartoon character towels
Fabulous Ready made Curtains
Plain dyed sheets pillow cases, etc.
All Grade 'A' Quality

Hotels
Guest Houses
Nursing Homes
Retirement Homes
Company Cheques
or Credit Cards
Accepted

Every Thursday 10% Discount for senior citizens

Warehouse & Trade Units 5&6 Blowick Industrial Estate
Crowland Street, Southport PR8 7SJ
Tel: 01704 512222, Fax: 01704 551201

Administration & Accounts
PO. Box 1076 Maidenhead Berkshire SL6 4YP
Registered office company No. 3971988 PO. Box 1076
Maidenhead Berkshire SL6 4YP

sales@uktextiles.co.uk www.uktextiles.co.uk



SOUTHPORT DRAMATIC CLUB
**1920
2000**
80th ANNIVERSARY SEASON

**SOUTHPORT
DRAMATIC
CLUB**

LITTLE
THEATRE

**Dates for
Your Diary**

Hoghton Street,
Southport.
Telephone:
(01704)
530521/530460

REGISTERED CHARITY No. 221585

4th Apr - 5th Apr 2001

"TWG Plays"

Sat 7th Apr - 7.45pm

The Hesketh Bank Silver Band with the Harmony Singers.

Tickets £5 from the band members and at the door

27th Apr - 5th May 2001

"The Philadelphia Story"

By Philip Barry. Directed by Robin Hirsch

An SDC Production

12th May - 19th May 2001

"Mack and Mabel"

Book by Michael Stuart. Music by Jerry Herman

A Birkdale Orpheus Production

30th May - 2nd June 2001

"Guys and Dolls"

Music and Lyrics by Frank Loessel

An Ormskirk A.D.O.S. Production

AN SDC DISABLED ACCESS FUNDRAISING PRODUCTION

David McGillivray & Walter Zerlin Jnr's
Farcical Comedy

*"The Farndale Avenue Housing Estate
Townswomen's Guild Dramatic Society's
Production of **MACBETH**"*

Directed by Matthew Woodhams

23rd - 26th May 2001 at 7.45pm

The Eighties

- 1980 November: Opening of the new bar at the Little Theatre.
Birth of the British Leyland "Mini".
- 1981 July: Opening of the Humberside Bridge.
29 July: Charles, Prince of Wales, marries Lady Diana Spencer.
December: Unemployment exceeds 3 million.
- 1982 SDC Sponsorship Scheme is launched.
A "loop" is installed in the Little Theatre to aid those with hearing difficulties.
- 1983 The Falklands War.
- 1986 28 December: SDC presents the amateur premier of "Peter Pan".
- 1987 1 January: Fire at the Little Theatre - all productions cancelled.
February: Theatre foyer used as a temporary auditorium with a production of "Local Affairs".
The "Phoenix Fund", headed by Ray Mann, raises over £50,000 for the refurbishment of the Little Theatre.
- 1988 29 September: Cyril Luckham re-opens the L.T. Gala performance of the "Scarlet Pimpernel".
- 1988-1989 The Christmas show is "Peter Pan".



For the best reporting of
live *theatre* in the area,
read:



Gwen **Storey**

only in

Champion
NEWSPAPERS

every Wednesday

Telephone: 01704 392392