



SOUTHPORT
DRAMATIC CLUB

SOUTHPORT DRAMATIC CLUB
1920
2000
80th ANNIVERSARY SEASON

80th Anniversary Season

Our traditional family Pantomime



Sleeping Beauty

*Written and
Directed by Stephen Hughes-Alty
Choreography by Anna Dunnnett, Staging by Arnold Gorse.
Musical Director - Pete Scholes*

*Friday 22nd December 2000 to
Sunday 7th January 2001*

*Matinee 2pm
Evening 7.30pm*

Sponsored by



Sponsored by



Tel: (01704) 530521/530460

LITTLE THEATRE

www.littletheatresouthport.co.uk

HOGHTON STREET • SOUTHPORT

REGISTERED CHARITY NO. 221565

This Production of
“*Sleeping Beauty*”

has been kindly Sponsored by



We wish them and their guests

A Happy Christmas

and a Prosperous

New Year

And hope that you all enjoy our

Traditional Pantomime



Director's Notes



We are delighted to welcome you all to the SDC's production of "Sleeping Beauty" and invite you to join us as we explore one of the most endearing fairy tales of them all.

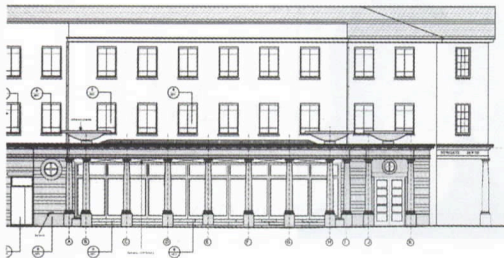
This time-honoured story tells of the beautiful Princess Aurora who, cursed by the wicked fairy, Demonica, sleeps for a hundred years until awoken by a kiss from the handsome and brave Prince Valiant. Add to this a man-mad Royal Nanny, a disgruntled Court Jester, Anne Robinson and a time machine and you have a sparkling mix of traditional and refreshingly off-beat ingredients designed to delight children of all ages.

It has been an honour to direct this year's pantomime and my grateful thanks go to everyone who has contributed their time and effort to this production - to the members of the production team, to the backstage crew, the Front of House staff, to the lighting and sound technicians, to the wardrobe and property departments and, of course, to my dedicated and talented cast.

Last of all, I would like to thank you, our audience, for joining us on our adventure. It only remains for me to wish you all a very Merry Christmas and if we can make it just that little bit merrier, then we have done our job.

Stephen Hughes-Alty
Director





- Full Architect's services:-
- Commercial / Office Premises.
 - Restaurants.
 - Industrial Units
 - Retail Units.
 - Shopfitting.
 - Interior Design.
 - Private Housing.
 - Building Surveys.
 - Land Surveys.

CRAIG FOSTER ARCHITECT

State House, 22 Dale Street,
Liverpool, L2 4UR.
Tel : 0151 236 0234



Supplying the complete
range of legal
services

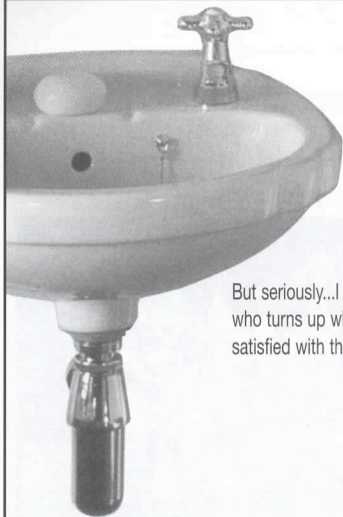


Contact **Michael Yates** on
01704 872156

Home and out of hours visits by arrangement







CORGI
Registered

A FULL VARIETY PERFORMANCE...

Let me take the drama out of supplying and fitting your new beautiful bathroom, en-suite or kitchen. Or give a warm welcome to a new or serviced boiler/central heating system.

You will want to applaud the quality of my electrical or plumbing work - and gas work usually brings a standing ovation.

But seriously...I am a qualified and reliable tradesman who can complete work to certified standards, who turns up when agreed, who gives detailed free estimates, and who ensures that you are fully satisfied with the final outcome.

DO YOU NEED ANY PROMPTING?

PETER DAVIES

Telephone: 01704 505474

Mobile: 0976 263267

FOR ALL ELECTRICAL, PLUMBING AND GAS WORK

separates

Co-ordinating range of ladies' fashions

scarves

Divia
FASHIONS

sizes 12-22

Proprietor: Barbara Beardsell

4 Ryeground Lane

Formby

Tel: 01704 878138

hosiery

(opposite The Grapes)

jewellery





Sleeping Beauty

*Written and Directed by
Stephen Hughes-Alty*

Cast

In Order of Appearance

Fortuna. The Good Luck Fairy	CHERYL CLARKE
Fusspot. The Lord Chamberlain	NORMAN HOPE
Tickles. The Court Jester	DAVID WALKER
Mistress Divinia Doolittle. Royal Nanny	ARNOLD GORSE
Queen Ammonia	HELEN PICKAVANCE
King Cuthbert The Careless	JON ELLIS-FOX
Lady Jane. Lady in waiting	SUE PALMER
Shout } Heralds	MATTHEW WOODHAMS
Bawl }	PETER FORSHAW
Demonica. The Wicked Fairy	PAT BALL
Princess Aurora. The Sleeping Beauty	HAYLEY DOYLE
Prince Valiant of Euphoria	JOSS WILSON
Mercy } Fairy Folk	LIANNE CURTIS
Melody }	RACHEL SPENCER
Light Foot }	FAITH TINSLEY
Faith }	FRANCIS BELL
Adora }	LAURA GORSE
Grace }	MELISSA CLARKE

COURIERS, SERVANTS & DANCERS

Francis Bell, Kirk Bragg, Jenna Birchall, Melissa Clarke, Clare Cubbon, Lianne Curtis,
Lisa Curtis, Laura Gorse, Phil Hunter, Rachael Spencer, Ricki Spofforth,
David Thomas, Faith Tinsley, Stephen Tinsley, Julie-Ann Tinsley & Guy Unsworth



The Action takes place in:

Prologue

Above the clouds

Act 1

- Scene 1 The great ballroom in the Palace of Mysteria.
Scene 2 A corridor in the palace.
Scene 3 The palace gardens. Sixteen years later.
Scene 4 An ante-room in the palace.
Scene 5 The great ballroom again.

There will be an Interval of 20 minutes

Act 2

- Scene 1 The village of Frolicking-in-the-Forest. A hundred years later.
Scene 2 A footpath in the forest.
Scene 3 The great ballroom in the Palace of Mysteria.
Scene 4 Deep in the Dark Wood.
Scene 5 Demonica's hidden lair.
Scene 6 Back in the palace.
Scene 7 The Royal Wedding.

Pyrotechnics, smoke, ultraviolet light and strobe lighting may be used in this production. The management reserves the right to refuse admission to the auditorium after curtain up, until a suitable opportunity occurs. First aid facilities are provided at this theatre by St John Ambulance Brigade, whose members give their services voluntarily.

Patrons are welcome in our licensed bar downstairs before and after tonight's performance.

Why not beat the rush and pre-order your interval drinks in the bar?

An induction loop is installed in this theatre for the benefit of hearing impaired patrons.

Please turn your hearing aid to 'T'.

At the end of tonight's performance you may leave by any of the exits, all of which will be open. In an emergency, this theatre can be emptied in three minutes or less if everyone leaves in an orderly manner.

Smoking is prohibited in the auditorium.

THEATRE LICENSEE CHARLES R. MOOK



Staging

Musical DirectorPETE SCHOLES
ChoreographerANNA DUNNETT
StagingARNOLD GORSE
Stage ManagerJUDITH GORSE
Assistant Stage ManagerBECCY BEARDSSELL
Wardrobe DirectorJAMES HUGHES-ALTY
Wardrobe AssistantsCOLIN ALTY
.....DOROTHY ALTY
.....ELIZABETH DAVIDSON
PromptEMMA HITCHCOCK
PropertiesBARBARA BEARDSSELL
.....SARAH MORELAND-SMITH
.....EDWARD BEARDSSELL
.....CHRISTOPHER D. APPLETON
Lighting Designed byTONY BERRY
Lighting OperatorCHRIS BERRY
FlysJOHN COATES
.....SYD COLEY
.....PETER DAVIES
SoundJONATHAN GOSLING
.....JOHN BRINDLE
PyrotechnicsIAN McCALLUM
Scenic ArtistBOB JESSAMINE
Photography byNEIL HICKSON

STAGE CREW

Lindsay Haywood	Roderick Beardsell
Emma Hitchcock	Bill Davies
Nick Murray	Chris B. Appleton
Chris Appleton	Dave Moreland-Smith
Craig Foster	Alec Robson

And other Members too numerous to mention.







Head First

Unisex Hairdresser's

(closed Monday)

4a Ashley Road

(off Sussex Road)

Southport PR9 0RB

Telephone

(01704) 544624

~ Hewitts ~

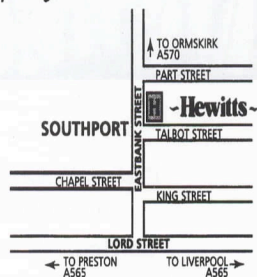
of Southport

Exceeding your Expectations

Bedroom Furniture - Dining Furniture

Upholstery - Carpets

Curtains - Interior Design



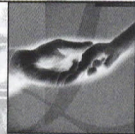
42-46 Eastbank Street, Southport, PR8 1ES Tel: (01704) 535000 Fax: (01704) 536803



Security for the future



Ludlow



Ludlow & Co Independent Financial Advisors 172 Lord Street • Southport • PR9 0QA
T: 01704 500324 • F: 01704 500965 • E: Ludlow@ludco.co.uk

Regulated by the Personal Investment Authority.

Barnes Hazel
PRESENTS

AN EXTRAVAGANZA OF SPECTACLES

BOOKING NOW



starring

Stunning range of fashion
frames

Dazzling prices

Impeccable service

What the Critics say

"Choosing my spectacles was a pleasure" JH

"I certainly will go back again" MM

"Amazing the pounds I saved" AC

with

Roberto Rossini
and the Country range frames
10% discount on these designer frames with this advert

featuring

All in one price for Frame and Lenses
FREE Children's Spectacles
Student's discount

BarnesHazel
Ophthalmic Opticians

Opposite Little Theatre Southport 01704 533929





SOUTHPORT DRAMATIC CLUB
**1920
2000**
80th ANNIVERSARY SEASON

**SOUTHPORT
DRAMATIC
CLUB**

**LITTLE
THEATRE**

**Dates for
Your Diary**

Hoghton Street,
Southport.
Telephone:
(01704)
530521/530460

REGISTERED CHARITY No. 221585

26th Jan - 3rd Feb 2001

"Living Together"

by Alan Ayckbourne,

directed by Poppy Flannaghan.

Sponsored by Duncan Sheard Glass *DSG*

An SDC Production

23rd Feb - 3rd Mar 2001

"Katherine Howard"

by William Nicholson, directed by Pat Ball

An SDC Production

23rd Mar - 31st Mar 2001

"Silhouette"

by Simon Brett, directed by Ray Mann

Sponsored by HSBC

An SDC Production

27th Apr - 5th May 2001

"The Philadelphia Story"

by Phillip Barry, directed by Robin Hirsch

An SDC Production



The Fifties

- 1950 SDC summer hospital tour.
- 1950-53 Korean War.
- 1951 Flora Robson becomes the SDC President.
Average weekly wage - £8.10s.
Less than 1 in 10 households have a telephone.
The Festival of Britain.
- 1952 Era of the "Teddy Boys".
- 1954 End of food rationing.
Roger Bannister runs first 4-minute mile.
- 1956 The Suez War.
John Lennon and Paul McCartney form the "Quarrymen".
John Osborne's play
"Look Back In Anger"
staged in London.
Bill Hayley's "Rock
Around the Clock"
invades the UK.
- 1957 SDC feels the effect of
television - audiences
down from 80% to 55%.
Subscriber system
introduced.
- 1958 CND founded.
- 1959 Harold Macmillan -
"You've never had it so
good".
"Lady Chatterley's
Lover" trial.



Flora Robson, 1938.

**For the best reporting of
live *theatre* in the area,
read:**



Gwen Storey

only in

Champion
NEWSPAPERS

every Wednesday

Telephone: 01704 531302