



SOUTHPORT DRAMATIC CLUB

SOUTHPORT DRAMATIC CLUB
**1920
2000**
80th ANNIVERSARY SEASON

80th Anniversary Season

Bill Naughton's family comedy

Spring & Port Wine

directed by Hilary Thomson



sponsored by



Fri 22nd Sept to
Sat 30th Sept 2000

7:45pm

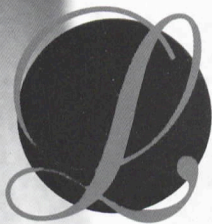
Tel: (01704) 530521/530460

LITTLE THEATRE

www.littletheatresouthport.co.uk

HOGHTON STREET • SOUTHPORT

REGISTERED CHARITY NO. 221585



L u d l o w

Compliments

all financial tastes

Official Sponsors of
'Spring & Port Wine'

Ludlow & Co. Independent Financial Advisors

172 Lord Street • Southport • PR9 0QA

T: 01704 500324

F: 01704 500965

E: Ludlow@ludco.co.uk

Regulated by the Personal Investment Authority

From your Chairman



Dear Patrons,

It is my privilege and great pleasure to offer you a warm welcome to this our 80th season of productions in our now very own Little Theatre.

Our Millennium year continues with a variety of plays and the annual pantomime which we trust will appeal to your various tastes.

Some sub-committees have been hard at work choosing and casting the plays and planning the stage settings while others book your seats, keep you informed and prepare to cater for your needs in the Servery and Bar.

Our first play, 'Spring and Port Wine' - a nostalgic Lancashire saga of family life awaits you tonight.

Later in 2001, we are planning to install a lift with access to the Auditorium and 2nd floor with facilities for the disabled. Many of us will find this a welcome advantage.

On behalf of the Southport Dramatic Club I thank you sincerely for your loyal support which has helped so greatly in the purchase of our Theatre and will aid the improvements we have in mind.

With my best wishes to you all,

Sincerely yours,

JOYCE GOLDSWORTH

Director's Notes



I am delighted to have been asked to direct the opening play of our 80th Anniversary Season. 'Spring and Port Wine' by Bill Naughton is a warm northern family comedy, about love, tolerance, understanding, integrity and caring.

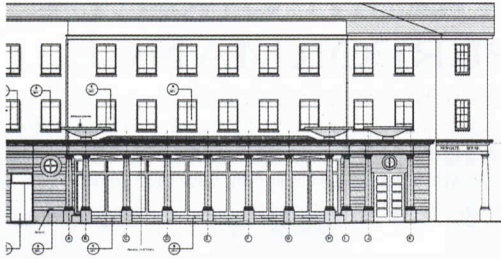
It has been uplifting & rewarding for me to work with a cast that includes both experienced actors and performers new to our stage.

So all we need now is for you our audience to sit back and enjoy our story.

"It's a reet good un!"

HILARY THOMSON

Director



Full Architect's services:-

- Commercial / Office Premises.
- Restaurants.
- Industrial Units
- Retail Units.
- Shopfitting.
- Interior Design.
- Private Housing.
- Building Surveys.
- Land Surveys.

CRAIG FOSTER ARCHITECT

State House, 22 Dale Street,
Liverpool, L2 4UR.
Tel : 0151 236 0234



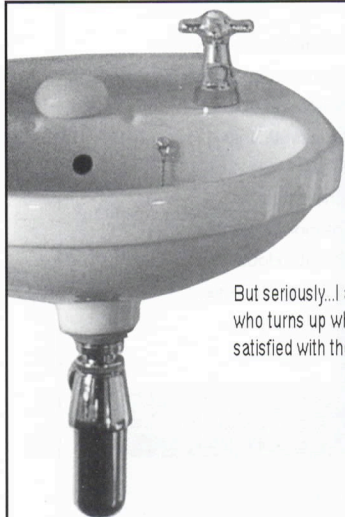
Supplying the complete
range of legal
services

SOLICITORS

Maxwell
Entwistle
&
Byrne

Contact **Michael Yates** on
01704 872156

Home and out of hours visits by arrangement



CORGI
Registered

A FULL VARIETY PERFORMANCE...

Let me take the drama out of supplying and fitting your new beautiful bathroom, en-suite or kitchen. Or give a warm welcome to a new or serviced boiler/central heating system.

You will want to applaud the quality of my electrical or plumbing work - and gas work usually brings a standing ovation.

But seriously...I am a qualified and reliable tradesman who can complete work to certified standards, who turns up when agreed, who gives detailed free estimates, and who ensures that you are fully satisfied with the final outcome.

DO YOU NEED ANY PROMPTING?

PETER DAVIES

Telephone: 01704 505474

Mobile: 0976 263267

FOR ALL ELECTRICAL, PLUMBING AND GAS WORK

separates

Co-ordinating range of ladies' fashions

scarves

Divia FASHIONS

sizes 12-22

Proprietor: Barbara Beardsell

4 Ryeground Lane

Formby

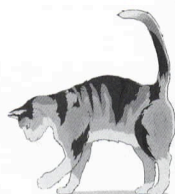
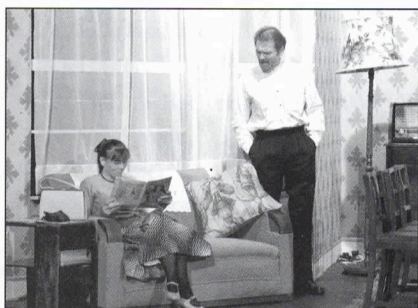
Tel: 01704 878138

hosiery

(opposite The Grapes)

jewellery

"It's a reet good un!"



Spring & Port Wine

By Bill Naughton
Directed by Hilary Thomson

Cast

Daisy CromptonCELIA POPE
Rafe CromptonLES GOMERSALL
Florence CromptonBELINDA WHEELER
Harold CromptonMATTHEW WOODHAMS
Hilda CromptonMARILYN FLETCHER-HILL
Wilfred CromptonDAVID THOMAS
Betsy JaneSUE Mc CORMICK
ArthurSIMON ARMSTRONG
The Cat“TIGER”

The Play

The action of the play passes in the Crompton home, Bolton, Lancashire.

Act 1 - Friday

(Interval of 20 minutes between Act 1 & Act 2).

Act 2 - Scene 1 - Sunday

Scene 2 - Monday

There will be a curtain in scene 2 to denote passage of time



Staging

Stage ManagerLINDSAY HAYWOOD
Assistant Stage Manager/CastEMMA HITCHCOCK
Assistant Stage Manager/BookJENNY PARKER
PropertiesJULIE WHELAN
BARBARA WHELAN
BLYTHE & BARBARA CRAWFORD
Lighting DesignTONY BERRY
Lighting OperatorROY CARR
SoundBRIAN HODGE / JACK DIAMOND
WardrobeJAMES HUGHES-ALTY & CAST
Set Designed byLINDSAY HAYWOOD
Set Constructed bySDC PRODUCTION TEAM
Scenic ArtistBOB JESSAMINE
Photographs byNEIL HICKSON, GRAHAM SHERRIFF

ACKNOWLEDGEMENTS

Tony Sutcliffe - Antiques
Bolton Evening News
Catherine Edna Thomson
"Tiger" and his owners
Fran Percival

The management reserves the right to refuse admission to the auditorium after curtain up, until a suitable opportunity occurs. First aid facilities are provided at this theatre by St John Ambulance Brigade, whose members give their services voluntarily.

Patrons are welcome in our licensed bar downstairs before and after tonight's performance.

Why not beat the rush and pre-order your interval drinks in the bar?

An induction loop is installed in this theatre for the benefit of hearing impaired patrons.

Please turn your hearing aid to 'T'.

At the end of tonight's performance you may leave by any of the exits, all of which will be open.

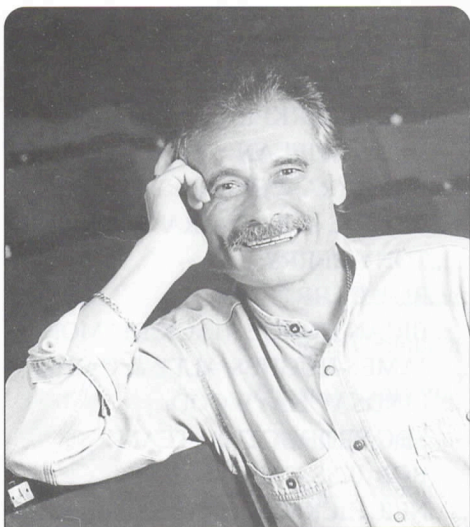
In an emergency, this theatre can be emptied in three minutes or less if everyone leaves in an orderly manner.

Smoking is prohibited in the auditorium.

THEATRE LICENSEE CHARLES R. MOOK



CAST PHOTOGRAPHS



LES GOMERSALL



CELIA POPE



BELINDA WHEELER

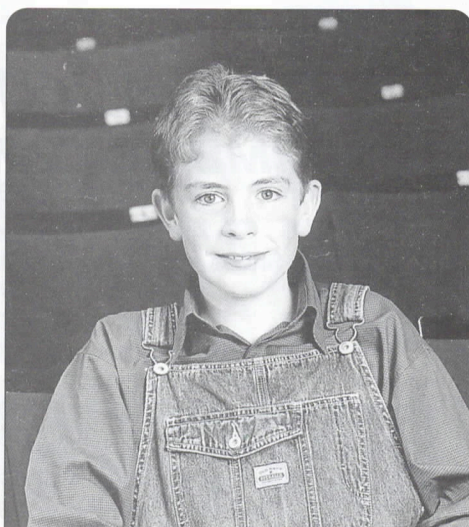


MATTHEW WOODHAMS

CAST PHOTOGRAPHS



MARILYN FLETCHER-HILL



DAVID THOMAS



SUE McCORMICK



SIMON ARMSTRONG



Little Dancer

53 Piercefield Road
Freshfield
Merseyside
Tel: 01704 833160
Fax: 01704 875810

FORMBY'S DANCEWEAR SHOP opposite the Grapes Hotel

All your Dancewear requirements

- Ballet Shoes • Tap Shoes • Character Shoes • Ballroom Shoes
- Sweatpants - Children's and Adults
- Jazz Shoes - Children's and Adults
- Regulation Leotards • Gymnast Leotards • Tutu's
- Danskin Shimmer Tights • RAD Seamed Ballet Tights
- Performance • Fitness • Swimwear • Gym & Dancewear

Mail Order Service available

The flexible leisurewear company!

Also a stockist of Suzi Q's Porcelain Dolls

Hewitts

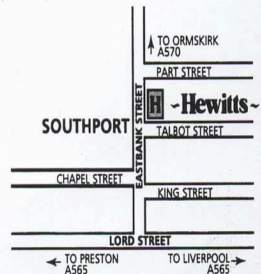
of Southport

Exceeding your Expectations

Bedroom Furniture - Dining Furniture

Upholstery - Carpets

Curtains - Interior Design



42-46 Eastbank Street, Southport, PR8 1ES Tel: (01704) 535000 Fax: (01704) 536803

Security for the future



Ludlow & Co Independent Financial Advisors 172 Lord Street • Southport • PR9 0QA
T: 01704 500324 • F: 01704 500965 • E: Ludlow@ludco.co.uk

Regulated by the Personal Investment Authority.

Barnes Hazel
PRESENTS

AN EXTRAVAGANZA OF SPECTACLES



starring

Stunning range of fashion
frames

Dazzling prices

Impeccable service

What the Critics say

"Choosing my spectacles was a pleasure" JH

"I certainly will go back again" MM

"Amazing the pounds I saved" AC

with

Roberto Rossini

and the Country range frames

10% discount on these designer frames with this advert

featuring

All in one price for Frame and Lenses

FREE Children's Spectacles

Student's discount

BarnesHazel
Ophthalmic Opticians

Opposite Little Theatre Southport 01704 533929

BOOKING NOW



SOUTHPORT DRAMATIC CLUB
**1920
2000**
80th ANNIVERSARY SEASON

**SOUTHPORT
DRAMATIC
CLUB**

**The Little
Theatre**

**Dates for
Your Diary**

Hoghton Street,
Southport.
Telephone:
(01704)
530521/530460

REGISTERED CHARITY No. 221585

13th Oct - 21st Oct 2000

"The Business of Murder"

by Richard Harris

directed by David Davies

Sponsored by The Royal Bank of Scotland.

An SDC Production.

23rd Oct - 28th Oct 2000

"David Copperfield"

A Sefton Theatre Co Production

30th Oct - 4th Nov 2000

"Fiddler on the Roof"

A Maghull Operatic Soc. Production

9th Nov - 11th Nov 2000

Loreto Dance Academy

Production by Pam Bamber

Sunday 12th Nov 2000

Ainsdale Flower Arrangers

24th Nov- 2nd Dec 2000

"BREEZEBLOCK PARK"

by Willie Russel, directed by Alistair Hewitt.

Sponsored by Mitchell & Wright Printers

An SDC Production



The Twenties

1920 - **SDC founded.**

June - Dame Nellie Melba's first broadcast.

October - First degrees for women at Oxford.

1921 - 22nd July "Chu Chin Chow" closes after 2,238 performances.

1922 - Postage for letters - 1 ½d.

1923 - 26th March - Death of Sarah Bernhardt.

26th April - Duke of York marries Lady Elizabeth Bowes-Lyon.

1926 - 6th March - Shakespeare Memorial Theatre at Stratford-on-Avon burnt down.

6th August - First woman swims channel.

1927 - March - Lindberg flies New York to Paris in 33 ½ hrs.

1928 - Dame Ellen Terry dies.

1929 - June - First woman cabinet minister.

21st October - R101 Airship makes its first flight.

1920-29 - SDC presents annual Productions at the Opera House (shown below) until it burnt down in 1929.



For the best reporting of
live *theatre* in the area,
read:



Gwen

Storey

only in

Champion
NEWSPAPERS

every Wednesday

Telephone: 01704 531302