

# THE LITTLE THEATRE

THE HOME OF THE SOUTHPORT DRAMATIC CLUB



**Murder**  
ON THE NILE  
by AGATHA CHRISTIE

THIS IS AN  
**SDC**  
PRODUCTION

Directed by  
**STANLEY ELLIS**

28th Sept - 6th Oct. 1984

Sponsored by  
**SANDYS**  
FITTED FURNITURE



# ***Southport Refrigeration Services***

(C. R. MOOK)

---

SPECIALIST REPAIRS TO:-  
FREEZERS, FRIDGE-FREEZERS  
AND HOUSEHOLD REFRIGERATORS  
OVER 30 YEARS EXPERIENCE

---

**Ring SOUTHPORT 44639**  
(ANYTIME)

---

**Commercial & Industrial  
Photography**

**C. H. LOKER**

---

**WEDDINGS                      ADVERTISING**  
**and LEGAL PHOTOGRAPHY**

---

**49 Arbour Street, Southport**

Telephone 40292



*From the Chairman,*

**JOHN T. HAYNES**



Dear Patron,

It is with pleasure that I welcome you all. The Southport Dramatic Club always looks upon the start of a season as a new challenge in the task of bringing you first class productions for your entertainment.

As most of you will know we did not present a summer play this year. This is because over the last few years we have found it difficult to do the vital maintenance work. The theatre may have been closed but all equipment back-stage has been overhauled, a new stage floor has been laid and the smell of paint has pervaded the air. You will also notice that we have made various improvements to enhance your comfort and enjoyment.

During the last few months the Play Selection and Casting Committee have been choosing the plays and from the information in your programme and other advertising media I know you will have seen that an interesting and enjoyable season is in store.

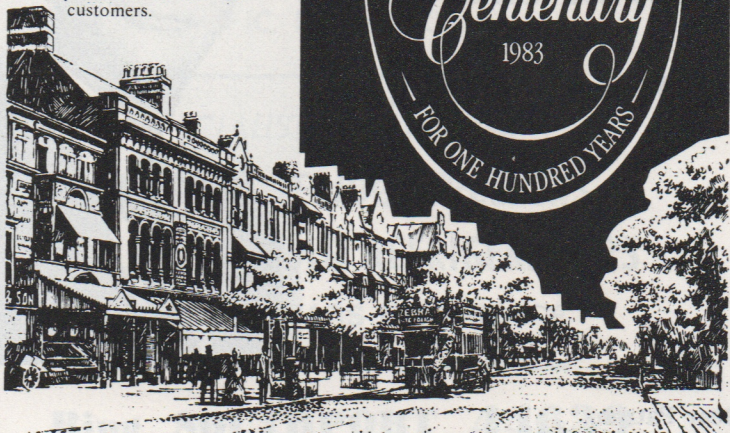
Your continued support is vital to the S.D.C. and to old patrons and new, again, a warm welcome to our new season.



## The true test of time

The time honoured craftsmanship of fine quality jewellery and silverware is reflected in our comprehensive stock.

We are pleased to have celebrated over one hundred years of successful trading, which our family firm has enjoyed, giving interested and friendly service to all our customers.



JEWELLERS,  
GOLDSMITHS  
AND  
SILVERSMITHS  
SINCE 1883

# CONNARDS

421 LORD STREET, SOUTHPORT.  
Telephone (0704) 31977

SPARES      REPAIRS      SERVICE

# DOMESTIC APPLIANCE CENTRE

61 EASTBANK ST. SOUTHPORT

Tel. 31430



HOOVER, HOTPOINT, ELECTROLUX,  
INDESIT, KENWOOD, RUSSELL HOBBS etc.



ONE OF THE NORTH'S LARGEST STOCKS OF  
REBUILT CLEANERS and WASHING MACHINES



# SieMatic

kitchen design



WHODUNNIT?

# Sandys

SUPPLIERS OF THE FINEST FITTED KITCHENS

39 EASTBANK STREET, SOUTHPORT. Tel. 38462

*'A COMBINATION OF EXCELLENCE'*

We are pleased to be sponsoring this production of "Murder on the Nile" and wish every success to all those connected with it.



# WHAT'S ON at the LITTLE

Tel: 30521

---

10th—13th OCTOBER, 1984

## Sefton Theatre Company — Glass Menagerie by Tennessee Williams

---

SATURDAY, 13th OCTOBER, 1984

## North West Widows Association — Coffee Morning

---

SATURDAY, 20th OCTOBER, 1984

## Cats Protection League — Fair

---

26th OCTOBER—3rd NOVEMBER, 1984

NEIL SIMON'S

## California Suite

Directed by Lesley Winsland

An S.D.C. Production

---

7th—10th NOVEMBER, 1984

## Maghull Amateur Operatic Society — A Black and White Minstrel Show

---

14th—17th NOVEMBER, 1984

## Garrick Players — Bonaventure by Charlotte Hastings

---

24th NOVEMBER, 1984

## Friends of Southport Hospitals — Coffee Morning

---

24th NOVEMBER, 1984

## Help the Aged — Horse Racing Evening Meeting

---

30th NOVEMBER—8th DECEMBER, 1984

## Filumena

by Eduardo de Filippo

Directed by Iris Collinson

An S.D.C. Production

---

## Why Not Become An S.D.C. Subscriber?

- ★ Eight shows for the price of six—saving 25%
- ★ Guaranteed seat for every show
- ★ Subscriber tickets available at any stage in the season even after one play, two plays etc.

COME ON AND SPOIL YOURSELF





# R.M. Leonard & Co.

THE COMPLETE INSURANCE AND  
MORTGAGE SERVICE

## CONSULT US ABOUT:

**Investment and Tax Planning — why not  
use our free Share Valuation service?**

**Retirement Planning—are you throwing  
away tax allowances, if self-employed?**

**Mortgages & Remortgages — for any purpose**

**School Fees Planning & Covenants**

**TELEPHONE: 67306**

EASY PARKING — PROFESSIONAL ADVICE

Local Director: W. A. BRIGHT, F.C.I.I., A.C.I.S.

AT—

**30 LIVERPOOL ROAD, BIRKDALE VILLAGE**

Local Agents: Bradford & Bingley Building Society

---

## Mr. GREENWOOD'S BARBER SHOP

*still under  
the same  
management*

(Formerly The New Place)



Open hours:

Monday— 9 am—6 pm  
Thursday

Friday 8.30 am—8 pm

Saturday 8.30 am—6 pm

**30 STATION ROAD, AINSDALE,  
SOUTHPORT. Tel: 74560**



# Students, Artists and Leisure Painters

WHERE DO YOU GO FOR YOUR  
ART MATERIALS AND PICTURE FRAMING?

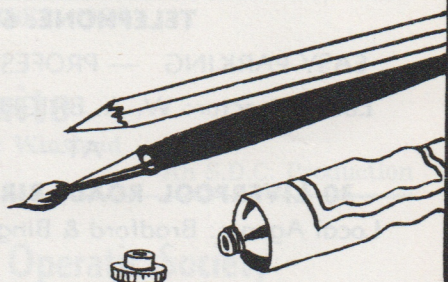
WHY NOT VISIT

## Philip Berrill's Art Shop

6b PORTLAND STREET, SOUTHPORT  
(opposite the side of the Prince of Wales Hotel)

TEL: (0704) 44574

- ★Also ask at our shop for free details of Philip Berrill's
- ★Drawing and painting classes. beginners welcome
- ★Postal correspondence art courses and
- ★Painting Holidays



## Crimond Hotel

28 KNOWSLEY ROAD, SOUTHPORT

Telephone: (0704) 36456

LICENSED HOTEL

A.A. and R.A.C. LISTED



HEATED  
INDOOR  
SWIMMING  
POOL  
  
SAUNA

For your next function contact Pat and Geoff Randle  
Open all year — Special Christmas House Party  
We can also accommodate YOUR guests overnight



# AGATHA CHRISTIE

Agatha Mary Clarissa Miller was born in 1891 of a middle-class family in Torquay, Devon.

Her father died when she was a child and she was brought up by her mother who encouraged her to write stories and persuaded her to submit her first novel 'The Mysterious Affair at Styles', for publication.

The many subsequent novels which followed that first success undoubtedly made Agatha Christie the most famous crime-writer of her time. She wrote and sold more detective stories than ever before worldwide. Her books were translated into 103 languages and their sales have been surpassed only by the Bible and Shakespeare.

The novel 'The Murder of Roger Ackroyd' was published in 1926 and although this was not her first book it was the one which made her name and will be remembered for the audacious ingenuity of its ending which was the source of much discussion by both critics and public. This book was her first one to be published by Collins,—a relationship which was to endure for the next fifty years and more than seventy books.

In that same year, 1926, Agatha Christie was herself the centre of a real-life mystery. She disappeared for 10 days from her home leaving behind her a series of clues which completely baffled the police force and had the newspapers buzzing with differing theories as to where and why she had gone. Was it because her first husband, Colonel Archibald Christie, had been found to be engaged in an affair with another woman, or indeed a case of amnesia as claimed by Agatha? Whatever the secret behind her disappearance the truth has never been revealed.

Agatha Christie was the most professional of writers, always producing her typescripts to a strict timetable, and always meticulous about correction of her proofs. She was also most particular about the jacket designs on her books and insisted upon seeing each one before it was finalised. Agatha Christie was a professional who expected nothing less than professionalism from her publishers.

In addition to the endless flow of mystery stories she wrote several 'straight' novels under the pseudonym of Mary Westcott. She wrote another book under her own name which was a good humoured personal account of various expeditions to Syria which she made to see her second husband, Max Walloman, whom she married in 1930. Max Walloman was an archaeologist and Christie is quoted as once-saying 'The good thing about being married to an archaeologist is that the older you get the more interested he is in you.'

Her play 'The Mousetrap' which opened in London in 1952 is still a current success and the length of this production has to be a tribute to the magic and persistent intrigue which only Christie could create.

A retiring lady in her private life, one who loved the sun, travel, flowers, and unusual food, Agatha Christie clearly belongs amongst the most accomplished and entertaining writers of her time.



28th September to 6th October, 1984

# MURDER ON THE NILE

by AGATHA CHRISTIE

Directed by STANLEY ELLIS

## CAST in order of appearance

1st BEADSELLER ... .. ALAN HAYES  
2nd BEADSELLER ... .. COLIN GRIME  
STEWARD ... .. STUART WARDLE  
MISS FFOLIOT-FFAULKES ... .. BETTY MOOK  
CHRISTINA GRANT ... .. TESSA WALSH  
SMITH ... .. DAVID PARRY  
LOUISE ... .. JULIE THORPE  
DR. BESSNER ... .. DEREK HORNE  
KAY MOSTYN ... .. DANA THORNE  
SIMON MOSTYN ... .. MARK BRAITHWAITE  
CANON PENNEFATHER ... .. BILL FINN  
JACQUELINE DE SEVERAC ... .. JO BURNS  
McNAUGHT ... .. COLIN GRIME

The scene is laid throughout in the observation  
saloon of the paddle steamer Lotus on the Nile  
between Shellal and Wadi Halfa.

ACT I                    At Shellal. Late afternoon.

ACT II   Scene 1   By the temple of Abu Simbel. Three days  
                         later. Evening, after dinner.

                         Scene 2   The same. Five minutes later.

ACT III                    The same. The next morning.



## STAGE STAFF

Stage Manager ... .. Lindsay Haywood  
Asst. Stage Manager (Book) ... .. Mary Croll  
Asst. Stage Manager (Cast) ... .. Sharon Jenkins  
Properties ... .. Julie Whelan  
Lighting ... .. Peter Beswick  
Stephen Wainwright  
Sound ... .. Tracy Wilkinson  
Costume ... .. Margaret Horne  
Pauline Davies

Set designed and painted by **Roy Blatchford** and built by  
the **production team**.

Programme cover ... .. David Charters

---

## ACKNOWLEDGEMENTS

Hair Styles by Andre Bernard  
and Furniture by The Alco Shop, Mawdesley

---

An Induction Loop has been provided in this theatre for  
the hard of hearing through the generosity of Marks and  
Spencer P.L.C.

By prior arrangement a limited number of Wheelchairs  
can be accommodated.

---

# *S.D.C. Members' Diary*

SUNDAY, 14th OCTOBER, 1984

AN EVENING OF ONE-ACT PLAYS  
MEMBERS AND FRIENDS WELCOME



# MURDER EVERY WEEKEND

Mini-breaks, introduced by hotels many years ago in an attempt to attract guests in the off-peak season, soon developed into the sports field. Fishing, pony trekking, golf and bridge weekends became common and very popular but who would have thought that murder could be added to the list. One enterprising young lady from Crosby certainly thought so—Joy Swift introduced this exciting idea in an effort to attract winter guests to the hotel where she worked—this was four years ago and little did she know at that time how successful her “murders” were to become.

Started locally the idea has spread to other parts of the country regardless of season. Joy has even been to America where “Murder Weekends” are in great demand. Fancy a Murder Weekend in New York via Concorde!

How are these Murder Weekends organised? Which comes first, the plot or the players? Discussions took place with the Southport Dramatic Club, a number of members were interested and currently seven take part in “Murder Weekends” in various parts of the country. Others from the Neptune Theatre in Liverpool are also involved.

Now the plot. All are original with each weekend having a central theme. The chosen team for a weekend get together and exchange ideas and once the main plot has been established, characterisations and sub-plots are created. Histories and relationships between characters have to be learned for no rehearsals, as such, take place. The whole weekend is based on conversations with the guests and improvised ‘set-pieces’. For example ‘overheard conversations’ between actors, arguments and even fights! Pertinent information is dropped into casual conversations so the guests, like the actors, have to be on their toes all the time. A clue noticeboard is provided and up-dated throughout the weekend with incriminating evidence, photographs, bank statements, love letters, birth certificates, black-mail notes etc.

The guests, once they have booked for the weekend, must lose their own identities, and have a reason for being there, relative to the plot. Some dream up more intricate backgrounds than the actors themselves!

From the reception on Friday evening before dinner the guests may not discuss Murder Weekends—they do not exist, and under that premise, find it easier to enter into the spirit of the weekend, whatever it may be. The untimely demise of the first victim and arrival of the police and ambulance to remove the body, remove any reticence to participate.

Guests give 100% committment to solving the crime, working in groups formed during the weekend, and others working alone, keeping all information to themselves, determined to solve it on their own. After a full Saturday's work from breakfast through an afternoon activity and a fancy dress party an Saturday night, guests can often be seen still studying the noticeboard or cross-examining an unfortunate suspect in the wee small hours of Sunday morning. Sunday breakfast sees continuing questioning of surviving actors, but by 11 am the guests must commit their theories to paper and all is revealed at the denouement, culminating in an arrest by the detective.

continued



*Look Better! Feel Better!*

CALL AT

# **CROWN CHEMISTS**

FOR YOUR DAILY NEEDS

**COSMETICS    HAIR CARE**

**BABY REQUISITES    FILMS**

**SLIMMING AIDS, etc.**

**2 CROWN BUILDINGS**

**Liverpool Road, Birkdale**

Telephone . . . 66931

---

## **Regency Fire Surround Studios**



Call in and see our magnificent display of fireplaces  
Award winning designer fireplaces from  
America, Italy and France

Including BLACK DIAMOND, the gas fire that thinks its a  
real coal fire! The only gas fire approved by the  
Open Gas Fire Association.

We have a superb display of brassware, pictures and  
hearth accessories.

### **REMEMBER**

Make the hearth of your home the heart of your home.

---

**37 WAYFARERS ARCADE, LORD STREET, SOUTHPORT**

Telephone: 31368



# J. WEBSTER & SONS

We have available what we consider to be the finest display of Furniture, Carpets and Curtains one could wish for.

We are always pleased to see people browsing through our showrooms and we will advise on all matters concerning the transformation of your house into a beautiful home!

Visit our showrooms today and discover for yourself the beauty and elegance of our China and Crystal displays.

ACCESS and BARCLAYCARD

---

94 CHURCH ROAD, TARLETON, Nr. PRESTON,  
LANCASHIRE, PR4 6UN  
Tel. Hesketh Bank (077473) 2249

3 ST. HELENS ROAD, ORMSKIRK  
Tel. Ormskirk (0695) 76006

143/147 TOWN GATE, LEYLAND  
Tel. Leyland (07744) 21641



FOR  
MATERNITY FASHIONS  
FOUNDATION GARMENTS  
&  
ALL BABY NEEDS

---

Specialists in baby carriages, nursery  
furniture and all babywear.

---

8, 10, 12 PRINCES STREET  
SOUTHPORT. TEL. (0704) 37974



## **MURDER EVERY WEEKEND continued . . .**

It may sound like forty-eight hours of hard work. It is. But it is also a great deal of fun. A remark made by an American guest only recently, captured the essence of what makes Murder Weekends. She said that not only had she had the most intriguing and exciting weekend she could remember but that she had made friends with fifty other people in the space of two days, and after all they had been through together, she felt she had known them far longer.

How often can you say that about a weekend break away from it all?

M. P.

---

**THE SOUTHPORT DRAMATIC CLUB gratefully  
acknowledges financial assistance from:**

**SANDYS FITTED FURNITURE, September, 1984 —**

**MURDER ON THE NILE**

**MARKS and SPENCER Plc, October, 1984 —**

**CALIFORNIA SUITE**

**MANSION HOUSE, Fine China and Crystal, December, 1984 —**

**FILUMENA**

**L.O. JEFFS LTD., Produce Packers & Growers, January, 1985—**

**JACK AND THE BEANSTALK**

---

First-aid facilities are provided at this theatre by St. John Ambulance Brigade, whose members give their services voluntarily.

---

**SMOKING IS PROHIBITED IN THE AUDITORIUM**

The Public may leave at the end of the Performance by all exits and all exit doors will be at that time open.

If the Public leaves in an orderly manner **THIS THEATRE  
CAN BE EMPTIED IN THREE MINUTES OR LESS.**

**THEATRE LICENSEE**

**HARRY BOND**

---



# What's on Elsewhere

The Southport Dramatic Club is a member of the Little Theatre Guild of Great Britain, which consists of some 60 amateur companies, all of whom own their own theatre. The following list of 'What's on' at some of those theatres which are nearest to Southport is published partly as a matter of interest, but also in the hope that some of our patrons may wish to visit one or other of these theatres.

---

## STOCKPORT GARRICK THEATRE

1st — 6th October

### **Educating Rita**

by Willy Russell

(World Amateur Premiere)

---

## WIGAN LITTLE THEATRE

5th — 13th October

### **Educating Rita**

by Willy Russell

---

## CHORLEY LITTLE THEATRE

6th — 13th October

### **California Suite**

by Neil Simon

---

## THE CLUB THEATRE, ALTRINCHAM

14th — 20th October

### **A Shred of Evidence**

by R. C. Sherriff

---

## BOLTON LITTLE THEATRE

3rd — 10th November

### **On Golden Pond**

by Ernest Thompson

---

## STOCKPORT GARRICK THEATRE

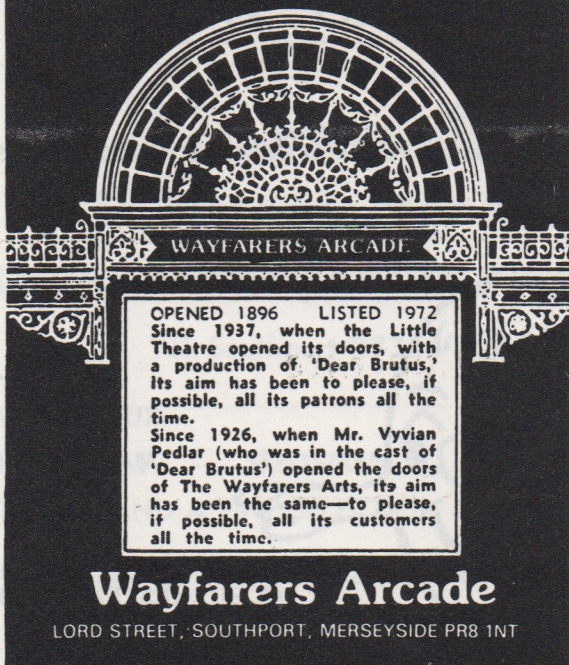
3rd — 10th November

### **Romeo and Juliet**

by William Shakespeare



# Wayfarers Arts



WAYFARERS ARCADE

OPENED 1896 LISTED 1972  
Since 1937, when the Little Theatre opened its doors, with a production of 'Dear Brutus,' its aim has been to please, if possible, all its patrons all the time.  
Since 1926, when Mr. Vyvian Pedlar (who was in the cast of 'Dear Brutus') opened the doors of The Wayfarers Arts, its aim has been the same—to please, if possible, all its customers all the time.

## Wayfarers Arcade

LORD STREET, SOUTHPORT, MERSEYSIDE PR8 1NT

QUALITY and SERVICE

*Bakers & Confectioners*

# Ball & Gregson

— (Churchtown) Ltd. —  
of Southport

139 CAMBRIDGE RD.

Telephone: 28512

90 BISPHAM RD.

Telephone: 28377



# MARTINDALE'S PRINTERS LTD

QUALITY PRINTING

FOR ALL YOUR STATIONERY REQUISITES.

ENVELOPES & CUT PAPER

AT COMPETITIVE PRICES



RUBBER STAMPS  
MADE-TO-ORDER

62 SHAKESPEARE STREET  
SOUTHPORT  
Tel. (0704) 32965

---

## D. B. HAYWOOD

19 Tulketh Street  
Southport

ELECTRICAL CONTRACTOR and RETAILER

FOR YOUR ELECTRICAL WORK  
RE-WIRING (ESTIMATES FREE), METERS,  
SHOWERS, FANS, SUPPLIED & FITTED

REPAIRS OUR SPECIALITY

OFFICIAL AGENTS FOR  
PHILIPS, RIMA, ROWENTA, SUNBEAM and TEFAL

TELEPHONE: 34231



1908

1983

THREE-QUARTERS OF A CENTURY  
IN THE HEART OF CHURCHTOWN VILLAGE

---

**F. W. Gorse & Son**  
**78 Botanic Road**  
**CHURCHTOWN, SOUTHPORT**

Tel. Southport 28354

---

IRONMONGERS - SEEDSMEN - HARDWARE  
ELECTRICAL AND A FINE SELECTION OF GIFTWARE  
ESCORT CARPET AND UPHOLSTERY CLEANING  
HIRE SERVICE

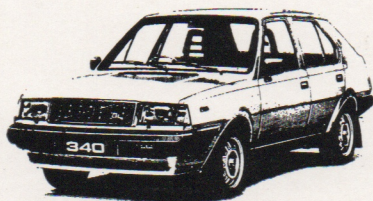
THE NEW SHOW IN BIRKDALE  
HAVE YOU SEEN IT YET?

ADMISSION FREE —  
Open Monday-Saturday, 9 am-6 pm

FULL SUPPORTING CAST —  
Professional Sales and Service Staff to help you

A WONDERFUL EXPERIENCE —  
For you and your car (of any make or type)

Your  
Local



Friendly  
Dealer

**VOLVO**

**JOHN GOULDER LTD**

**Volvo House, Weld Road**

**Birkdale, Southport Telephone 66613**



