

Southport Dramatic Club

presents

SEE HOW THEY RUN

By Philip King

21st July to 2nd August 1980

Nightly at 7.45



The Southport Little Theatre

Tel: 30521

Member of the Little Theatre Guild of Great Britain

Proprietors: P. Greenwood—S. Jenkins

***The
New
Place***

GENT'S HAIRDRESSERS

28 Liverpool Road, Birkdale

(opposite Midland Bank)

Telephone: 0704 65264

Appointments Necessary

Look Better! Feel Better!

CALL AT

**CROWN
CHEMISTS**

FOR YOUR DAILY NEEDS

COSMETICS HAIR CARE

BABY REQUISITES FILMS

SLIMMING AIDS, etc.

**2 CROWN BUILDINGS
Liverpool Road, Birkdale**

Telephone - - - 66931

Wayfarers Arcade



WAYFARERS ARCADE

Opened 1896 Listed 1972

Things are very exciting in the Wayfarers Arcade this year, for instance in place of Cave's the Chemist there is a brand new two storey building connecting the Arcade to Boothroyds.

Just to mention a few names Wedgwood China, Royal Doulton China, Edinburgh Crystal ... these and many more names fill this exciting building.

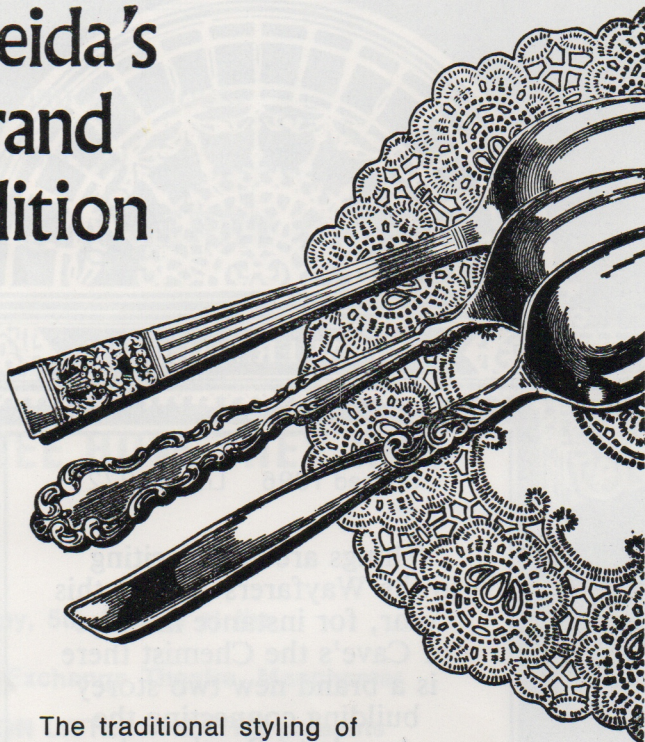
You will notice changes in the Arcade such as new tenants like Sandpiper Fashions, a new shop for Wayfarers Radio & TV, Rebecca Antiques — great improvements — come and see for yourself.



Wayfarers Arcade

LORD STREET, SOUTHPORT, MERSEYSIDE PR8 1NT

Oneida's
grand
tradition



The traditional styling of Oneida's superb cutlery in Hampton Court, Mansion House and South Seas patterns a trio of elegant and sophisticated designs to charm the eye and beautify your table.



CONNARDS
421 LORD STREET SOUTHPORT

Tel: 0704 31977

A FAMILY FIRM IN THE
CENTRE OF LORD STREET SINCE 1883

JEWELLERS

GOLDSMITHS

SILVERSMITHS

Summer at the Theatre

They said 'write something to tell our patrons what goes on backstage during the summer' . . . what a task! Well here goes! Cleaning, mending, tidying, repairing and renewing; in fact all the many jobs for which there never seems to be time during our winter season.

Scenery to be re-canvased and painted, costumes cleaned and mended, the whole of the stage area cleared and tidied ready to receive our current show and the stage machinery and equipment checked and repaired where necessary—it all sounds very unexciting and ordinary but all the same an essential part of keeping our beautiful theatre safe and thriving.

At the same time designs and plans are being prepared for settings for our coming winter shows and within a few short weeks scenery will be being built and painted, and once again we will be into another hectic season here at the 'Little.'

Wardrobe Hiring

EVERY THURSDAY from 8 pm until 9.30 pm

ENTRANCE:

OPPOSITE THE BACK OF THE LITTLE THEATRE

Telephone 32450

Established 18 years

**FOR QUALITY
BREAD, CONFECTIONERY
AND SAVOURIES**

Try

D. ROUTLEDGE

129 Eastbank Street, Southport

*Also Wedding Cakes of Distinction and
Personal Service at all times*

(CLOSED MONDAYS)



Pat & Geoff Randle invite you to stay with them at the

CRIMOND Hotel 28 KNOWSLEY ROAD
SOUTHPORT

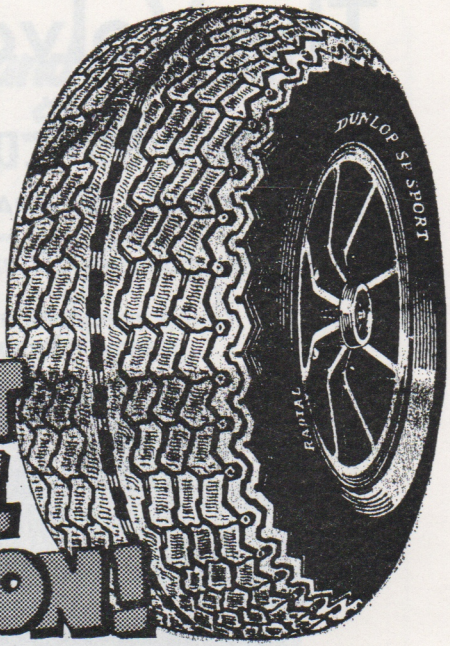
A.A. LICENSED R.A.C. Tel. (0704) 36456

TYRE SPECIALISTS

Wheel Balancing and
Repairs

BATTERIES

EXHAUSTS FITTED



**CUT
THE COST
OF TYRE
INFLATION!**

GORDON TYRE STORES LTD

Marlborough Road, Southport

Tel. Southport 33606

We gotta lotta stuff for crafty artists

Art materials

BY WINSOR & NEWTON, ROWNEY, DALER BOARD ETC.
A WIDE SELECTION OF COLOURED PAPERS & BOARDS.

Craft

FOR MODELLING, LAMPSHADE MAKING, MACRAME, PIN ART,
CANDLEMAKING, MARQUETRY, MOULDING, NEEDLEWORK, ETC.
BOOKS, A BIG RANGE OF TRIMMINGS AND LOTS MORE.

Picture framing

MOUNTING BOARDS AND MOULDINGS CUT FOR D.I.Y.

Come and browsa round

Botticelli Arts

15 Union Street, Southport Tel. (0704) 40737

The Volvo Story

By

JOHN GOULDER LTD

51 WELD ROAD - BIRKDALE - SOUTHPORT

A sheer motoring delight in Three Acts

ACT I Young executive, medium family car.
Handy Hatchback body.



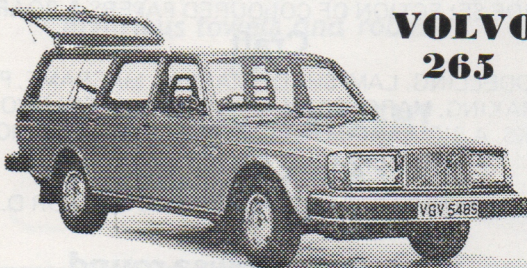
**VOLVO
343**

ACT II Successful business and professional.
Long journeys a pleasure



**VOLVO
244**

ACT III The ultimate Estate Car. You have arrived.



**VOLVO
265**

EPILOGUE: A lament at being unable to show
the superb 245 Estates and 264 GL Saloons

THIS SHOW WILL RUN FOR 16 YEARS
No other car has been shown to last as long.

'LITTLE'

Bits and Pieces

Welcome to the last play in our Diamond Jubilee Season, and since we usually have a number of visitors to the town for our summer show, a special welcome to you. For the benefit of our visitors, this particular page deals with club activities and other matters which may be of general interest to our patrons.

Since we are now in the Summer Season, when we hope for fine weather, we also have light evenings, and you may have noticed that what used to be our car park is now enclosed by a large brick wall. This represents the start of our new clubroom, generally referred to as "Phase 3". This will provide a large meeting room, bar and toilet facilities, with access via a new staircase yet to be installed where the piano currently stands in the foyer. An artist's impression of the completed job is on view in the foyer and with everything crossed this should be finished in time for the start of our new season in September. The car park always did cause arguments anyway!

Like the old Windmill Theatre, we never really close, and though there is only one show during the summer, work does not stop. To maintain the high standards we aim for means much necessary work on the "mechanics" of our theatre to ensure that all goes well "on stage." Any of you who have ever been "backstage" will know what I mean.

We recently had a "float" in the town's Charity Carnival, and praise be, the weather relented and produced a fine afternoon. Two of our younger members ran alongside the float distributing leaflets for the summer show, and can vouch for the figure preserving attributes of such activity!

To our regular patrons, another season opens at the end of September and our subscriber tickets will again be available — eight shows for the price of six.

Finally, our Spotlight Bar is available to you all — Have a drink in pleasant surroundings and remember — You can order interval drinks in advance and avoid the rush.

Happy Theatregoing,

J. H. M.

R. M. LEONARD & CO.



Group of Companies

Established 1901



PRESENTS

NEW BIRKDALE OFFICE

30a Liverpool Road, Birkdale

NOW OPEN FOR

Advice on all Mortgages, Finance,

General Insurance and Investment

Ring or Call our Manager:

BILL FINN

Southport 67306

★

ALSO AT LIVERPOOL AND CROSBY

Friends Provident Building
57 Dale Street, Liverpool 2
051-236-4961

35 Crosby Road North
Liverpool 22
051-920-8313

THE LITTLE THEATRE

Southport

Why not become a

SUBSCRIBER

THIS YEAR

?

You get EIGHT SHOWS

for the price of SIX

PRICES ARE:

£7.80

£6.60

and

£5.10 (First Nighters)

*Are you interested? – then please fill in below
and we will forward the details to you.*

Thank you!

To Southport Dramatic Club, Little Theatre, Houghton St.
Southport

Name _____

Address _____

21st July to 2nd August, 1980

SEE HOW THEY RUN

by **Philip King**

Directed by **Michael Hards**

CAST (In order of appearance)

Ida (A maid) **Sue Burroughs**
Miss Skillon **Betty Kent**
The Reverend Lionel Toop **John Hale**
Penelope Toop (His wife) **Frieda Kelly**
Lance Corporal Clive Winton **Mike Yates**
The Intruder **John McCulloch**
The Bishop of Lax **John Evans**
The Reverend Arthur Humphrey **Len Brindley**
Sergeant Towers **David Parry**

The action of the play takes place in the Hall at the Vicarage, Merton-cum-Middlewick.

ACT I An afternoon in September, 1945

Interval

ACT II The same night

Interval

ACT III A few minutes after Act II

STAGE STAFF

Stage Manager **Peter Holmes**

Assistant Stage Manager (Book) **Janine Grimes**

Assistant Stage Manager (Cast) **Jill Taylor**

Properties **Kay McCallen, Jean Braithwaite**

Wardrobe **Jayne Barty, Rae Evans, Mary Horton**

Lighting **Alan Lilley**

Sound **Greg Braithwaite, Liz Finn**



The set constructed and painted by **ROY BLATCHFORD** and
built by the **PRODUCTION TEAM**



ACKNOWLEDGEMENTS

We are most grateful for the loan of the following properties:

GIBSONS — for Glasses

Name _____

TETLEY WALKER LTD

*Why not have a drink
of
one of our Beers*

TETLEY BITTER

and

SKOL LAGER

in the

SPOTLIGHT BAR



**Open at 7 pm
also during the Interval and after the
Performance**

[except after final Saturday performance]



... at The Jean Scene

Unisex Jeans: Falmer, West Coast, Wrangler, Rifle and Lee Cooper, Cords and Jeans plus Junior Jeans

... at The Jean Scene

Separates by Kadix: Jackets, Skirts, Blouses, Mix and Match Range

... at The Jean Scene

Knitwear: Jonathan Miller, Jeff Dillon, Boules Sun + Sand, Mens Tops by Cagney

... at The Jean Scene

Hosiery, Scarves, Accessories: Mary Quant, Loops Belts

... at The Jean Scene

Jewellery: Buch & Deichmann of Copenhagen Wide Variety of Indian semi precious jewellery

at The Jean Scene NOW !!

2c Halsall Lane, Formby Tel. Formby 70697

PHILIP KING

Born in 1904, Philip King is a popular playwright of many years' standing. He is also an experienced actor and has worked as a director.

He began his career as an actor with the White Rose Players in Harrogate, where he spent seven years. His first play, "Without the Prince" was written in 1940. Many more have followed, mostly farces. Some of these have been written in collaboration with other people. The well known "Sailor" plays ("Sailor, Beware!", "Watch it, Sailor!", "Rock-a-Bye, Sailor!") were written with Falkland Cary, for instance, and three of his most recent plays ("Murder in Company", "Elementary My Dear", "Who says Murder?") were written with John Boland between 1972 and 1975.

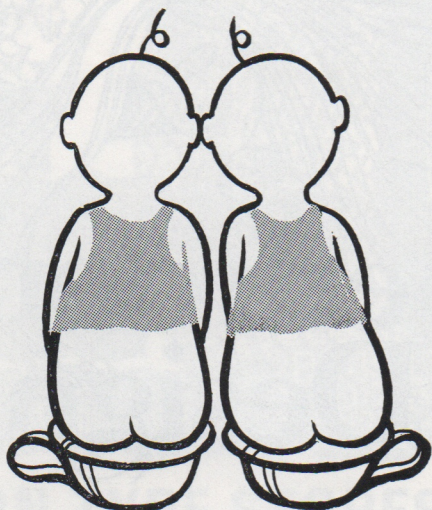
"See How They Run" dates from 1944, the kind of Philip King's plays and still one of the most popular. In July, 1964 it was revived at the Vaudeville Theatre in London with King himself playing the Bishop of Lax. He also played the Bishop in "I'll Get My Man" when this play was produced at the Bristol Old Vic in 1966.

Are you a Visitor?

*DON'T FORGET WE HAVE A PATRONS'
BAR, WHICH IS FOR YOU, OUR
AUDIENCE*

See you after the Show!

"I found out about Sarah"



... The way her mummy talks, you'd think she was in Who's Who. Well! I found out what's what with her. Her daddy own a bank? Sweetie, not even a bank account. That Silver Shadow pram? Darling, that's horse power not earning power. Of course she does dress divinely. But really . . . a Belgian Lace christening robe and all those dresses, not to mention the polished maple 'Cosatto' cot . . . on her daddy's income? Well darling, I found out about that too. I just happened to see Sarah and her mummy coming out of Harrisons, would you believe? So, in I go . . . and was I surprised? . . . they've got everything . . . simply everything any girl could ever wish for. I can tell you honey, from now on it's first stop Harrisons for me everytime. Oh! I almost forgot . . . there's this rather dishy fellow . . ."

Harrisons

of SOUTHPORT

For maternity fashions by Alldae, Page Boy, Brimell, foundation garments by Balance, Welfia, Abacita and all baby needs.

8-10 PRINCES ST. SOUTHPORT Tel. 37974



know your bedroom is a
special place

Let us help you create an
elegant bedroom with
our exciting

**NEW SEASON'S COLLECTION
of
BEDROOM CO-ORDINATES**

*Complement them with
luxurious towels and robes
by*

YVES SAINT LAURENT

*All on display now
at*

Bedroom Design

18 Liverpool Road, Birkdale

Telephone 60357

WHAT'S ON
at the LITTLE THEATRE

26th September to 4th October 1980

THE GHOST TRAIN

By Arnold Ridley

Directed by Joyce Goldsworth

24th October to 1st November 1980

THE CORN IS GREEN

By Emyln Williams

Directed by Stanley Ellis

28th November to 6th December 1980

**LLOYD GEORGE
KNEW MY FATHER**

By William Douglas Home

Directed by John Evans

30th December 1980 to 17th January 1981

OUR OWN PANTOMIME —

THE SLEEPING BEAUTY

Written and directed by Margaret Mann

MATINEES: 1st, 4th and 11th JANUARY 1981

(No evening performances)

NO PERFORMANCE ON MONDAY, 12th JANUARY 1981

FOR THE SECOND HALF OF THE SEASON
THE PLAY SELECTION COMMITTEE
ARE CONSIDERING:

Bedroom Farce

By ALAN AYCKBOURN

Great Day

By LESLIE STORM

The Merchant of Venice

By WILLIAM SHAKESPEARE

The Sacred Flame

By SOMERSET MAUGHAM

The Time of the Cuckoo

By ARTHUR LAURENTS

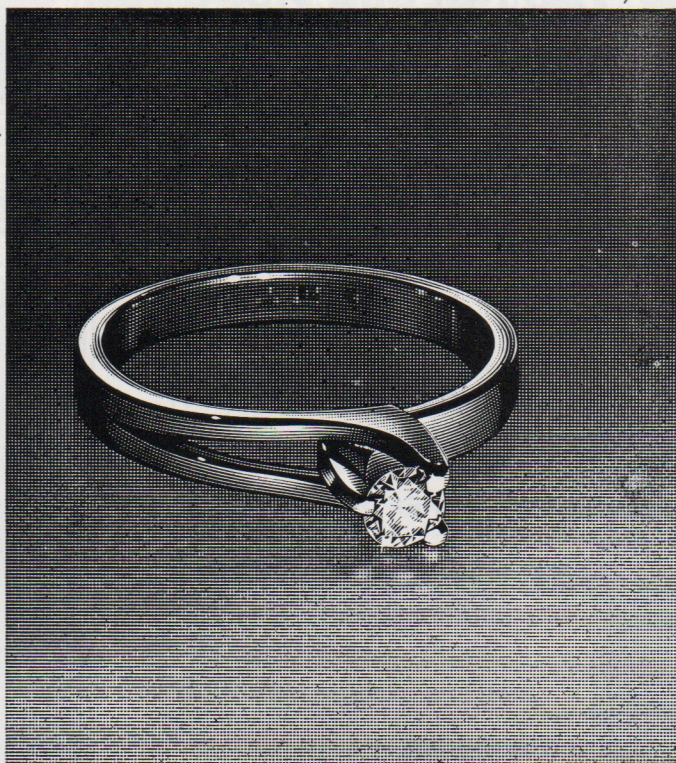
Phillips & Charles Ltd.

JEWELLERS OF LIVERPOOL FOR 125 YEARS

11 Church Street, Ormskirk. Tel: Ormskirk 74108

17 Ranelagh Street, (Opp. Central Station), Liverpool. Tel: 051-709 7415

ACCESS AND BARCLAYCARD WELCOMED



WHEN VISITING HISTORIC ORMSKIRK
CALL AND SEE OUR EXCLUSIVE
ORMSKIRK CHURCH CHARMS IN 9ct. GOLD AND
STERLING SILVER

RINGS - WATCHES - SILVER PLATED WARE
WEDGWOOD - CUT GLASS, etc.

P.S. WE SHALL BE DELIGHTED TO SEE YOU AND GIVE
5% DISCOUNT ON PRESENTATION OF THIS
ADVERTISEMENT

WHAT'S ON
at other Little Theatres

BRADFORD PLAYHOUSE

14th to 19th July

THE CHERRY ORCHARD

and

by Anton Chekhov

22nd to 27th September

SEE HOW THEY RUN

by Philip King

Tuesday, 5th August at the

Royal Exchange Theatre, Manchester

BOLTON LITTLE THEATRE presents

HADRIAN THE VII

by Peter Luke

HALIFAX THESPIANS

9th to 16th August

CHILDREN'S DAY

by Keith Waterhouse and Willis Hall

WIGAN LITTLE THEATRE

22nd to 30th August

HABEAS CORPUS

by Alan Bennett

Commercial & Industrial Photography

WEDDINGS and ADVERTISING

C. H. LOKER

49 Arbour Street - Tel: 40292

For a memorable performance . . .

Wallpapers from

Ashcrofts

41 EASTBANK ST. SOUTHPORT

Tel. (STD 0704) 32630

*Choose from over 800 Stock Patterns
and over 100 Pattern Books*

ADVISORY SERVICE AVAILABLE

For almost 70 years in the heart of
Churchtown Village — and still going strong

J. W. Gorse & Son

78 BOTANIC ROAD, CHURCHTOWN

Telephone 28354 SOUTHPORT

**IRONMONGERS · SEEDSMEN · HARDWARE
AND A FINE SELECTION OF GIFTWARE**

First-aid facilities are provided at this theatre by St. John
Ambulance Brigade, whose members give their
services voluntarily.

TELEPHONE BOOKINGS—Seats should be claimed as soon
as possible Box Office Telephone 30521 or 30460

REFRESHMENTS SERVED IN THE FOYER
DURING THE INTERVAL
SMOKING IS PROHIBITED IN THE AUDITORIUM

The Public may leave at the end of the Performance by
all exits and all exit doors will be at that time open.
If the Public leaves in an orderly manner THIS THEATRE
CAN BE EMPTIED IN THREE MINUTES OR LESS

THEATRE LICENCEE

R. D. BLUE, B.E.M.

**THE
BOOKSHOP
OF
QUALITY
AND NOTE**



C. K. Broadhurst & Co. Ltd

5 & 7 MARKET STREET, SOUTHPORT

Telephone Southport 32064