
SOUVENIR PROGRAMME

**Southport Dramatic Club's
Diamond Jubilee Season
Opening Production**

**DEAR
OCTOPUS**

By

DODIE SMITH

28th September to 6th October 1979

Nightly at 7.45



The Southport Little Theatre

Tel: 30521

Member of the Little Theatre Guild of Great Britain

SHEFFIELD REPERTORY REUNION

Proprietors: P. Greenwood—S. Jenkins

***The
New
Place***

GENT'S HAIRDRESSERS

28 Liverpool Road, Birkdale

(opposite Midland Bank)

Telephone: 0704 65264

Appointments Necessary

Look Better! Feel Better!

CALL AT

**CROWN
CHEMISTS**

FOR YOUR DAILY NEEDS

COSMETICS HAIR CARE

BABY REQUISITES FILMS

SLIMMING AIDS, etc.

2 CROWN BUILDINGS

Liverpool Road, Birkdale

Telephone - - - 66931

Wayfarers Arcade



WAYFARERS ARCADE

Opened 1896 Listed 1972

Things are very exciting in the Wayfarers Arcade this year, for instance in place of Cave's the Chemist there is a brand new two storey building connecting the Arcade to Boothroyds.

Just to mention a few names Wedgwood China, Royal Doulton China, Edinburgh Crystal ... these and many more names fill this exciting building.

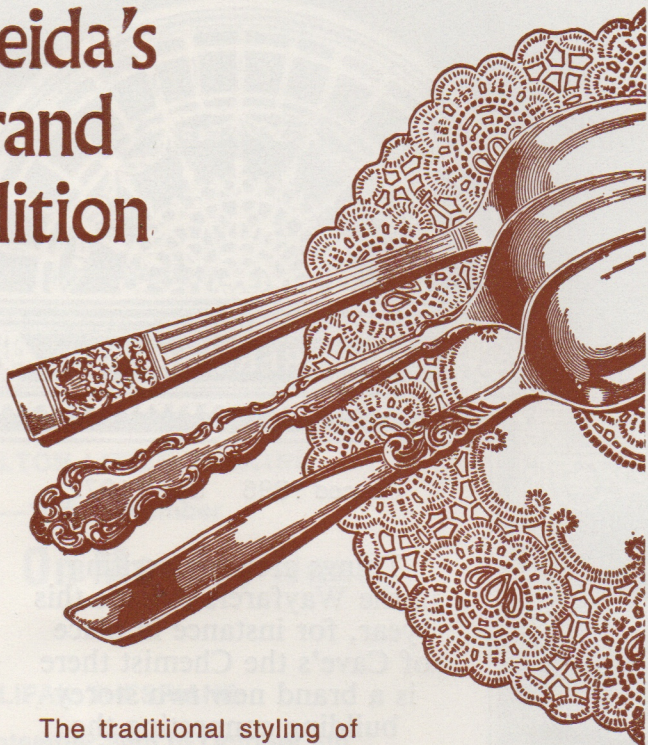
You will notice changes in the Arcade such as new tenants like Sandpiper Fashions, a new shop for Wayfarers Radio & TV, Rebecca Antiques — great improvements — come and see for yourself.



Wayfarers Arcade

LORD STREET, SOUTHPORT, MERSEYSIDE PR8 1NT

Oneida's
grand
tradition



The traditional styling of Oneida's superb cutlery in Hampton Court, Mansion House and South Seas patterns a trio of elegant and sophisticated designs to charm the eye and beautify your table.

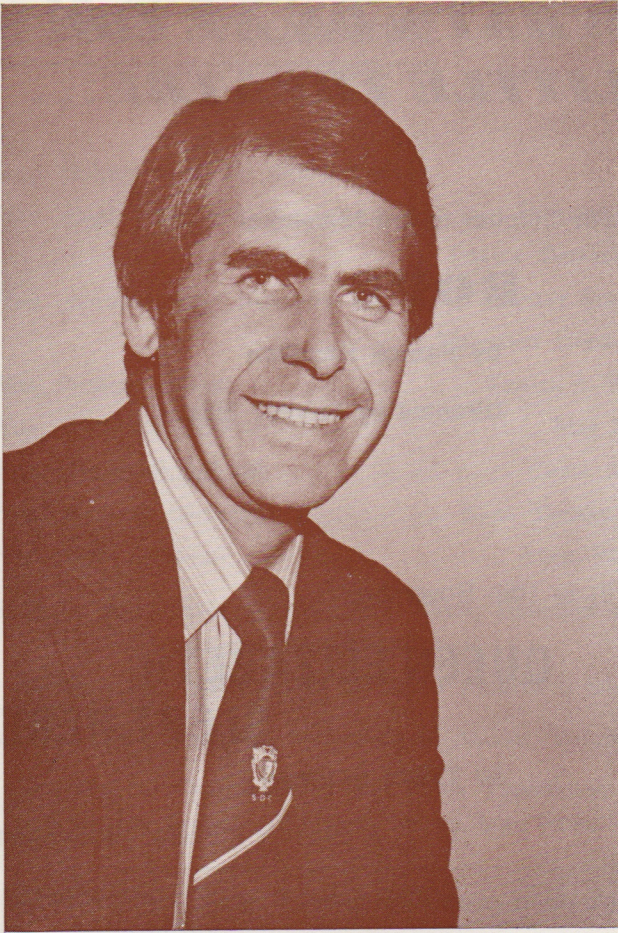


CONNARDS
421 LORD STREET SOUTHPORT

Tel: 0704 31977

A FAMILY FIRM IN THE
CENTRE OF LORD STREET SINCE 1883

JEWELLERS · GOLDSMITHS · SILVERSMITHS



Dear Patron,

As Chairman of the Southport Dramatic Club, it is my privilege to offer you all a very warm welcome to the Little Theatre once again, and to be able to thank so many of you for your continued support, without which the S.D.C. could not possibly survive.

This season is a very special one for the club as 1980 is our Diamond Jubilee, and we look forward to celebrating this notable event with you all throughout the coming year.

Our season of plays has a marvellous blend of comedy, thrills and spectacle to entertain you and I am certain you will find your visits to the 'Little' during the next eight months enjoyable and worthwhile.

The S.D.C. has always, during the last sixty years, continued to advance and improve its facilities and I hope that during this season we shall be able to open new extensions to the 'Little Theatre' thus providing you all with added comfort and space whenever you visit us.

I look forward to meeting you all during the coming months,

Yours sincerely,

ARNOLD GORSE

Chairman, S.D.C.

WHAT'S ON AT THE LITTLE THEATRE...

26th October to 3rd November

ROPE

by Patrick Hamilton

Directed by Stanley Ellis

An S.D.C. Production

7th to 10th November

QUEEN ELIZABETH SLEPT HERE

by Talbot Rothwell

A Garrick Players' Production

23rd November to 1st December

THE MATING GAME

by Robin Hawdon

Directed by Brenda Nicholl

An S.D.C. Production

29th December to 12th January, 1980

Our traditional family pantomime

ALADDIN

Written and directed by

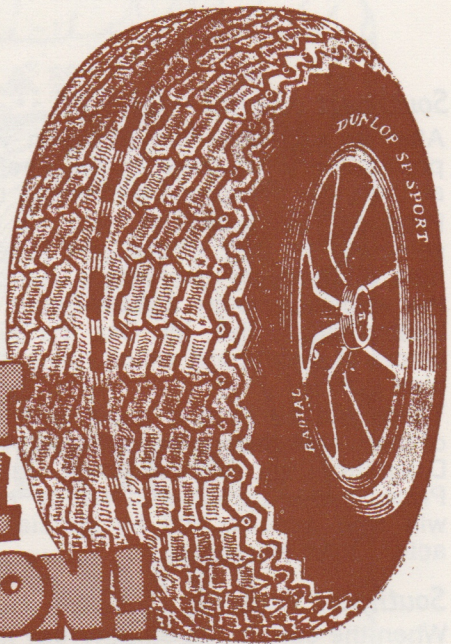
Margaret Mann

An S.D.C. Production

TYRE SPECIALISTS

Wheel Balancing and
Repairs

EXHAUSTS FITTED
BATTERIES



**CUT
THE COST
OF TYRE
INFLATION!**

GORDON TYRE STORES LTD

Marlborough Road, Southport

We gotta lotta stuff for crafty artists

Art materials

BY WINSOR & NEWTON, ROWNEY, DALER BOARD ETC.
A WIDE SELECTION OF COLOURED PAPERS & BOARDS.

Craft

FOR MODELLING, LAMPSHADE MAKING, MACRAME, PIN ART,
CANDLEMAKING, MARQUETRY, MOULDING, NEEDLEWORK, ETC.
BOOKS, A BIG RANGE OF TRIMMINGS AND LOTS MORE.

Picture framing

MOUNTING BOARDS AND MOULDINGS CUT FOR D.I.Y.

Come and browsa round

Botticelli Arts

15 Union Street, Southport Tel. (0704) 40737

WHAT THE

Southport Journal – 27.9.46

After an unbroken run of seven years, the 240th and last production to be given by the Sheffield Repertory Company at the Little Theatre, commences next Monday.

Producer Geoffrey Ost had, as one of his reasons for selecting the play, "You Can't Take It With You", the happy idea of choosing one with a sufficiently large cast to give the whole company a part. Public approval banks soundly behind you in this, Mr. Ost. It's our last chance to see the actors in a company which has endeared itself to Southport play goers.

There will be several guest artists in the cast, too, most of them well known in Southport. Three are members of the Dramatic Club, Margot Lowe, June Duncan and Dunstan Price. Violet Lamb, who needs no introduction from me, will also appear, and by special engagement, a London actor, John Heathcote

Southport Visiter – 15.10.46

When the curtain fell on Saturday night on the final performance in the Little Theatre by the Sheffield Repertory Company, Dr. A. A. Wilkinson (Chairman of Southport Dramatic Club), in the course of a tribute and farewell to the Repertory Company, "cleared the air" regarding position of that Company and the Dramatic Club.

He said: "No negotiations for a repertory company to run for six months during the Summer are complete Nor are they nearing completion"

Dr. Wilkinson said during the past seven years the Sheffield Repertory Company had given an enormous number of plays: it was a monumental work, for which the Southport public was profoundly grateful. Their work had been an inspiration and they would leave a great impression

Southport Visiter – 17.10.46

Forming a large part of the audience on Saturday at the Little Theatre when the Sheffield Repertory Company said goodbye, were members of Southport Dramatic Club, who afterwards entertained members of the company and all the staff to a dance in the foyer. Of all the dances, I don't think I have seen such a muster of Club members

Southport Visiter – 19.10.46

. . . . In preparation for the club's return to their headquarters the theatre is being thoroughly cleaned and renovated. The clubrooms and dressing rooms are being decorated in an attractive shade of buff while technical improvements include the installation of new lighting equipment.

Southport Visiter – 2.11.46

With only a few days left before the curtain goes up on their first post-war production at the Little Theatre next Thursday, members of Southport Dramatic Club are busily putting the final touches to their re-opening play, Dodie Smith's "Dear

PAPERS SAID

Octopus." the Club has one of the finest little theatres in the North, and in embarking on their post-war career, with the experience and successes of the past to help and encourage them, members are looking forward to writing a bright new chapter in the annals of amateur drama in Southport.

When the Visiter looked in at the theatre on Thursday, Mr. Joseph Crossley, who is producing "Dear Octopus", was putting the cast through their paces in the foyer. Mr. Crossley is an old hand at the game. This will be his tenth production for the Club, previous success of his including Bernard Shaw's "You Never Can Tell" and J. B. Priestley's "Dangerous Corner"

Southport Journal – 1.11.46

I see the evening dress cult has again raised its fastidious head in Southport.

The Board of Management of the Dramatic Club have sent out invitations to the official re-opening and tucked away in the bottom left-hand corner are those two words, "Evening Dress"

Ah well! I've done my best in this column to appeal to the organisers of social events to go easy on the evening dress edict while clothing is so stringently rationed, and although I've had a success in some quarters it looks as though I'm getting back to where I started.

But perhaps we should not be too hard on the Dramatic Club. May be a lounge suit or party frock here and there may be allowable. At any rate. I hope so, for I should hate to see any member being made the subject of a Bateman cartoon.

Southport Guardian – 9.11.46

The Southport Dramatic Club's opening on Thursday evening quite captured the atmosphere of a pre-war social event.

One was vividly reminded of the first opening night of the theatre and of those earlier days at the Garrick. The atmosphere was one of expectancy and well-being, and the front of the house presented a gay appearance. We women like the return of "dressing" for social occasions. Long frocks and dress shirts around do make a difference. The cast played well and this is as good a show as any amateur production that has ever been presented to the public.

Southport Journal – 15.11.46

Record booking have repaid Southport Dramatic Club for their untiring efforts to make the re-opening play, "Dear Octopus", a worthy performance

Southport Guardian – 16.11.46

I should think the present S.D.C. show is one of the biggest successes the club has had in the Little Theatre

The Volvo Story

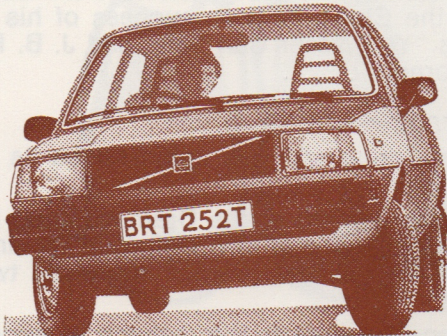
By

JOHN GOULDER LTD

51 WELD ROAD - BIRKDALE - SOUTHPORT

A sheer motoring delight in Three Acts

ACT I Young executive, medium family car.
Handy Hatchback body.



**VOLVO
343**

ACT II Successful business and professional.
Long journeys a pleasure



**VOLVO
244**

ACT III The ultimate Estate Car. You have arrived.



**VOLVO
265**

EPILOGUE: A lament at being unable to show
the superb 245 Estates and 264 GL Saloons

THIS SHOW WILL RUN FOR 16 YEARS
No other car has been shown to last as long.

Telephone 32450

Established 18 years

**FOR QUALITY
BREAD, CONFECTIONERY
AND SAVOURIES**

Try

D. ROUTLEDGE
129 Eastbank Street, Southport

*Also Wedding Cakes of Distinction and
Personal Service at all times*

(CLOSED MONDAYS)



Pat & Geoff Randle invite you to stay with them at the

CRIMOND Hotel 28 KNOWSLEY ROAD
SOUTHPORT
LICENSED Tel. (0704) 36456

28th September to 6th October, 1979

DEAR OCTOPUS

by **Dodie Smith**

Directed by **Nanne Burstall**

CAST

Charles Randolph	Benny Darrah
Dora Randolph	Margery Whitton
Hilda Randolph	Irene Holmes
Margery Harvey	} (their children) Robin Hirsch
Cynthia Randolph	 Ann Stowell
Nicholas Randolph	Don Anderson
Hugh Randolph		Roderick Beardsell
William (Bill) Harvey	} (their grand-children) Trudi Hirsch
Gwen (Flouncy) Harvey	 Richard Hirsch
Kathleen (Scrap) Kenton		Nicola D'Alessandro
Belle Schlessinger (their sister-in-law)	Ruth Smith
Edna Randolph (Hugh's mother)	Judy Hall
Laurel Randolph (Hugh's wife)	Sandra Lowe
Kenneth Harvey (Margery's husband)	John Murphy
Grace Fenning (Dora's companion)	Sheila Furlong
Nanny Patching (a nurse)	Betty Rawlinson
Gertrude (a parlourmaid)	Rene Redwood

The action of the play takes place at the Randolph's country house in North Essex, during a week-end in late autumn.

ACT I

The Hall — Friday evening

ACT II

The Nursery — Saturday

Scene 1 Morning

Scene 2 Afternoon

Scene 3 Late evening

ACT III

The Hall — Sunday evening

Scene 1 Before dinner

Scene 2 After dinner

There will be two intervals of approximately 15 minutes each.

STAGE STAFF

Stage Manager **Peter Beswick**
Deputy Stage Manager **Mike Rogerson**
Asst. Stage Manager (Book) **Sheila Pook**
Asst. Stage Manager (Cast) **Norma Rogerson**
Fay Whelan
Properties **Kay McCallen, Carolyn Evans,**
Janine Grime, Barbara James
Costumes **Southport Dramatic Club**
Wardrobe Department
Lights **Reno D'Alessandro**
Sound **Paul Rowe**
Stage Assistant **Chris Faulkes**
The set constructed and painted by **Roy Blatchford**
and built by the **Production Team**

ACKNOWLEDGEMENTS

We are most grateful to those concerned for the loan of the following properties:

Gibsons — Glass, China and Cutlery
Molloys Furnishers — Display Cupboard
Carr's Florist — Plants

YOU can help our Diamond Jubilee Season.

Have you thought of becoming an S.D.C. Subscriber?

From only £5.90 (or less now that you have seen the first play), you can have a reserved seat, with a choice of night and save up to £2.30.

Just think, a good night out once a month. The ideal present for you or a friend—an S.D.C. Subscribers' Season Ticket. It's still not too late.

**TAKE A LEAFLET FROM THE OUTSIDE BOX OFFICE
AS YOU LEAVE**



... at The Jean Scene

Unisex Jeans: Falmer, West Coast, Wrangler, Rifle and Lee Cooper, Cords and Jeans plus Junior Jeans

... at The Jean Scene

Separates by Kadix: Jackets, Skirts, Blouses, Mix and Match Range

... at The Jean Scene

Knitwear: Jonathan Miller, Jeff Dillon, Boules Sun + Sand, Mens Tops by Cagney

... at The Jean Scene

Hosiery, Scarves, Accessories: Mary Quant, Loops Belts

... at The Jean Scene

Jewellery: Buch & Deichmann of Copenhagen Wide Variety of Indian semi precious jewellery

at The Jean Scene NOW !!

2c Halsall Lane, Formby Tel. Formby 70697

TETLEY WALKER LTD

*Why not have a drink
of
one of our Beers*

TETLEY BITTER

and

SKOL LAGER

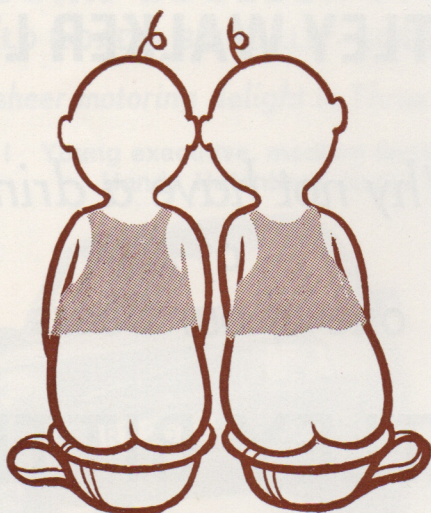
in the

SPOTLIGHT BAR



**Open at 7 pm
also during the Interval and after the
Performance**

"I found out about Sarah"



“ . . . The way her mummy talks, you'd think she was in Who's Who. Well! I found out what's what with her. Her daddy own a bank? Sweetie, not even a bank account. That Silver Shadow pram? Darling, that's horse power not earning power. Of course she does dress divinely. But really . . . a Belgian Lace christening robe and all those dresses, not to mention the polished maple 'Cosatto' cot . . . on her daddy's income? Well darling, I found out about that too. I just happened to see Sarah and her mummy coming out of Harrisons, would you believe? So, in I go . . . and was I surprised? . . . they've got everything . . . simply everything any girl could ever wish for. I can tell you honey, from now on it's first stop Harrisons for me everytime. Oh! I almost forgot . . . there's this rather dishy fellow . . . ”

Harrisons

of SOUTHPORT

*For maternity fashions, foundation garments
and all baby needs*

8-10 PRINCES ST. SOUTHPORT Tel. 37974



Bedroom Design

know your bedroom is a
special place

Let us help you create an
elegant bedroom with
our exciting

**NEW SEASON'S COLLECTION
of
BEDROOM CO-ORDINATES**

*Complement them with
luxurious towels and robes
by*

YVES SAINT LAURENT

*All on display now
at*

Bedroom Design

18 Liverpool Road, Birkdale

Telephone 60357

ALL OUR YESTERDAYS

THE PLAY

"DEAR OCTOPUS"

A Comedy in Three Acts

CAST :

CHARLES RANDOLPH	CHARLES NESBITT
DORA RANDOLPH	MAUD DUNSTAN PRICE
HILDA RANDOLPH	DOROTHY K. GRUNDY
MARGERY HARVEY } (their children)	BETTY PAPPADIMITRIOU
CYNTHIA RANDOLPH }	RACHEL CROSSLEY
NICHOLAS RANDOLPH }	JAMES MARTLAND
HUGH RANDOLPH	HARRY DAWES
GWEN (FLOUNCY) HARVEY } (their	ZOE ATKINSON
WILLIAM (BILL) HARVEY } grandchildren) ...	DENIS HOBLEY
KATHLEEN (SCRAP) KENTON }	BRENDA NEWALL
BELLE SCHLESSINGER (their sister-in-law)	CYNTHIA RIDLER
EDNA RANDOLPH (Hugh's mother)	HILDA THERKILDSEN
LAUREL RANDOLPH (Hugh's wife) ...	CHRISTINE HONEYBURNE
KENNETH HARVEY (Margery's husband)	FRANK STARKEY
GRACE FENNING (Dora's companion)	JOAN DUNCAN
NANNY PATCHING (a nurse)	ANNIE HURST
GERTRUDE (a parlourmaid)	ETHEL SWETTENHAM

The Play produced by JOSEPH CROSSLEY.

SYNOPSIS OF SCENES

The action of the play takes place at the Randolph's country house in North Essex, during a week-end in late Autumn.

Act I

The Hall. Friday evening.

Act II

The Nursery. Saturday.

Scene 1—Morning.

Scene 2—Afternoon.

Scene 3—Late evening.

Act III

The Dining-room. Sunday evening.

Scene 1—Before dinner.

Scene 2—After dinner.

-The 1946 Production

All Stage Helpers under the direction of:—

Hon. Stage Manager EDWARD HILL

Hon. Assistant Stage Managers { DERICK BETTERIDGE
STANLEY STAVELY
MARGARET GOMERSALL

Hon. Property Mistress ESTHER S. WOOD

Hon. Wardrobe Mistress MAY JONES

Hon. Electrician CHRIS. MOOR

Hon. Assistant Electrician KARL THERKILDSEN

Hon. Music Librarian AVRIL PARKER

Furniture by BEN PURSER & SONS LTD. ; ROYSE, DENNISON & SMITH,
and BEACON HOUSE.

Jewellery, etc., kindly loaned by HENRY PIDDUCK & SONS.

China, Glass and Cutlery, etc., by courtesy of ALDAMS, Tulketh Street.

Hairstyling to Cynthia Ridler and Hilda Therkildsen by
KATHLEEN GOODALL, of Maison Stanley, Lord Street.

REFRESHMENTS served during the intervals in the Foyer.

The Public may leave at the end of the performance by all exits, and
all exit doors must at that time be open.

If the Public leave in an orderly manner, THIS THEATRE CAN BE EMPTIED
IN THREE MINUTES OR LESS.

BOX OFFICE—For all S.D.C. Productions open on the Saturday to
Wednesday PRIOR to production on Thursday from 11 a.m. to
5 p.m., and during production from 11 a.m. to 8 p.m. Tel. 3021.

SMOKING IS PROHIBITED IN THE AUDITORIUM.

Commencing Tuesday, 19th November, 1946, to Saturday, November
23rd inclusive, THE GARRICK PLAYERS will present at this Theatre,
"SUMMER SEASON," a Comedy by Terry Bowen-Jones. For
further particulars see Advertisement in following pages.

R. M. LEONARD & CO.



Group of Companies

Established 1901



ANNOUNCE

A NEW PRODUCTION

AS A FURTHER STAGE OF
DEVELOPMENT

*The scene is being set for the opening of our
New Premises at*

30a Liverpool Road, Birkdale

Later in October

Advice on all Mortgages, Finance,

General Insurance and Investment

Ring or Call our Manager:

BILL FINN

Southport 67306



ALSO AT LIVERPOOL AND CROSBY

8 State Insurance Building
14 Dale Street, Liverpool 2
051-236-4961

35 Crosby Road North
Liverpool 22
051-920-8313

Phillips & Charles Ltd.

JEWELLERS OF LIVERPOOL FOR 125 YEARS

11 Church Street, Ormskirk. Tel: Ormskirk 74108

17 Ranelagh Street, (Opp. Central Station), Liverpool. Tel: 051-709 7415

ACCESS AND BARCLAYCARD WELCOMED



We have a gift for making golden days

**WHEN VISITING HISTORIC ORMSKIRK
CALL AND SEE OUR EXCLUSIVE
ORMSKIRK CHURCH CHARMS IN 9ct. GOLD AND
STERLING SILVER**

**RINGS - WATCHES - SILVER PLATED WARE
WEDGWOOD - CUT GLASS, etc.**

**P.S. WE SHALL BE DELIGHTED TO SEE YOU AND GIVE
5% DISCOUNT ON PRESENTATION OF THIS
ADVERTISEMENT**

WHAT'S ON **at other Little Theatres**

BINGLEY LITTLE THEATRE

8th—13th October

Watch Over The Rhine

by Lilian He'man

5th—10th November

Confusions

by Alan Ayckbourn

BOLTON LITTLE THEATRE

5th—10th November

On Monday Next

by Philip King

HALIFAX THESPIANS

September 29th to October 6th

Double Edge

by Leslie Darbon and Peter Whelan

STOCKPORT GARRICK THEATRE

10th to 17th November

Cause Célebre

by Terence Rattigan

WIGAN LITTLE THEATRE

2nd to 10th November

The Imaginary Invalid

by Moliere

SPECIAL NOTICE: At the Little Theatre for one night only—Sunday, 11th November—Bingley Little Theatre's production of "Confusions" by Alan Ayckbourn

Commercial & Industrial Photography

WEDDINGS and ADVERTISING

C. H. LOKER

49 Arbour Street - Tel: 40292

For a memorable performance . . .

Wallpapers from

Ashcrofts

41 EASTBANK ST. SOUTHPORT

Tel. (STD 0704) 32630

*Choose from over 800 Stock Patterns
and over 100 Pattern Books*

ADVISORY SERVICE AVAILABLE

For almost 70 years in the heart of
Churchtown Village — and still going strong

J. W. Gorse & Son

**78 BOTANIC ROAD, CHURCHTOWN
Telephone 28354 SOUTHPORT**

IRONMONGERS · SEEDSMEN · HARDWARE
AND A FINE SELECTION OF GIFTWARE

First-aid facilities are provided at this theatre by St. John
Ambulance Brigade, whose members give their
services voluntarily.

TELEPHONE BOOKINGS—Seats should be claimed as soon
as possible Box Office Telephone 30521 or 30460

REFRESHMENTS SERVED IN THE FOYER
DURING THE INTERVAL
SMOKING IS PROHIBITED IN THE AUDITORIUM

The Public may leave at the end of the Performance by
all exits and all exit doors will be at that time open.
If the Public leaves in an orderly manner THIS THEATRE
CAN BE EMPTIED IN THREE MINUTES OR LESS

THEATRE LICENCEE

R. D. BLUE, B.E.M.

**THE
BOOKSHOP
OF
QUALITY
AND NOTE**



C. K. Broadhurst & Co. Ltd

5 & 7 MARKET STREET, SOUTHPORT

Telephone Southport 32064

STOP PRESS

Why not come to a
COMEDY WORKSHOP ?
Spend an Afternoon
of LAUGHTER with
the SQUIRE OF KNOTTY ASH...
SUNDAY, 7th OCTOBER

Bar Open 1 pm. Workshop 2 pm
Tickets £1.25p.

Available from the Theatre Bar
or the Box Office

PROCEEDS TO CHARITY.

You can help us to raise money for
Charity and have an unusual Sunday
Afternoon in the bargain.