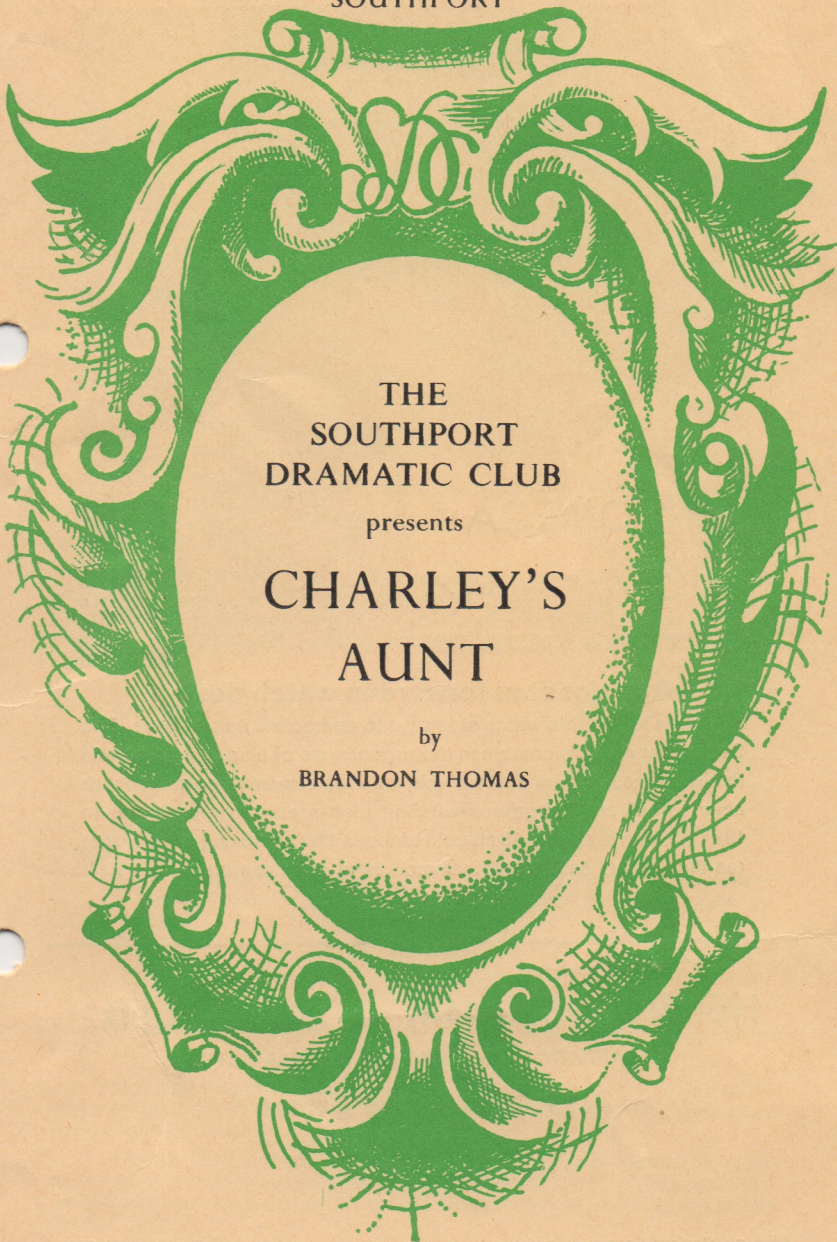


LITTLE THEATRE

SOUTHPORT



THE
SOUTHPORT
DRAMATIC CLUB

presents

CHARLEY'S
AUNT

by

BRANDON THOMAS

8th OCTOBER, 1965
FOR EIGHT NIGHTS at 7-45



A major step forward in watch design

You have to see this watch sideways to appreciate its slimness. The Seamaster de Ville combines the ruggedness of a sports watch and the elegance of a slim dress watch, with the convenience and superb accuracy of an Omega self-winding high-precision movement. In 18 ct. gold on exclusive 18 ct. gold bracelet £184. In 18 ct. gold on strap (as illustrated) £85.10.0. Other models in stainless steel from £36.

HENRY PIDDUCK & SONS LTD.

SOUTHPORT'S WATCH SPECIALISTS

175 & 177 Lord Street

S O U T H P O R T

TELEPHONE 3653

Also at Market Square, Hanley

Established 1841

Chairman's Letter



ARTHUR TATTERSALL, ESQ.
Chairman, S.D.C.

Dear Patron,

No doubt you will have read in other places that this is the 200th production the Southport Dramatic Club has had the pleasure in presenting to the public. Naturally we are proud of our record, which stretches back over the years to before the Garrick Theatre was built, to the old Southport Opera House.

From 1937 we have been able to present our plays to you in our own Little Theatre. In the process we have given over £9,000 to charity and kept the theatre in full repair for your comfort.

So I welcome you all to our 1965/66 winter season with exceptional pleasure. To those who have been subscribers and first-nighters for some time, a special word of thanks for your regular and valued support. To those who are visiting us for the first time I hope we shall justify our reputation.

As in past seasons our object will be to provide varied entertainment to cater for all tastes. Choosing seven plays to suit everyone is nearly an impossibility, but we shall do our best.

Yours very sincerely,

ARTHUR TATTERSALL.

Chairman S.D.C.

OUR NEXT PLAY

If you, by any chance hit upon a world-shaking discovery which could either be used for the good or for the destruction of mankind, would you impart such information or keep the knowledge to yourself.

Charles Morgan's play "The Burning Glass" to be presented for eight nights from 5th November, poses this problem of personal responsibility which provides an exciting piece of theatre almost on science fiction thriller lines.

AN INVITATION TO OUR PATRONS—Subscribers' Season Tickets and First Nighters' Tickets will be issued to cover the remaining SIX Plays this season at the following reduced rates :—Subscribers : 27/- and 18/6.
ALL ENQUIRIES TO THE BOX OFFICE.

“ CHARLEY’S AUNT ”

A Play in Three Acts
by **BRANDON THOMAS**

Characters (in order of their appearance) :

Jack Chesney	DAVID TATTERSALL
Brassett	CHARLES PRESTON
Charley Wykeham	PETER BURROUGHS
Lord Fancourt Babberley	STANLEY ELLIS
Kitty Verdun	RITA HUGHES
Amy Spettigue	MOIRA BYRNE
Colonel Sir Francis Chesney, Bart.	MICHAEL HARDS
Stephen Spettigue.....	NIGEL GRINDROD
Donna Lucia D’Alvadorez	MARGARET STARKEY
Ela Delahay.....	PATRICIA TAYLOR

The Play produced by **MARGARET CAMPION**

SYNOPSIS OF SCENES

The action of the Play takes place during Commemoration Week
at Oxford.

ACT I

Jack Chesney’s Rooms in College—Morning.

“ When pious frauds . . . are dispensations ”—Hudibras.

INTERVAL

ACT II

Garden outside Jack Chesney’s Rooms—Afternoon.

“ While there’s tea there’s hope ”—Pinero.

INTERVAL

ACT III

Drawing Room at Spettigue’s House—Evening.

“ Dinner lubricates business ”—Boswell.

Settings designed, constructed and painted by **ARTHUR NUGENT**.

During the intervals the music played will include excerpts from Polkas
and Waltzes by Johann Strauss and Waldteufel Waltzes.

Producer's Note

For some this will be a renewal of an old acquaintance, others will be meeting Charley's Aunt, that indomitable character, for the first time.

Originally produced over 60 years ago this play was one of the first "Long runs." Since when it has remained a firm favourite, and a classic of its type.

We hope you will enjoy tonight this glimpse into a more leisured age when the sun always shone and everyone had time to take tea in the garden.

MARGARET CAMPION.

HON. STAGE STAFF :

Stage Manager	DAVID ROBERTS
Assistant Stage Managers	AUDREY MEE, MARY LANE, LILIAN GOSLING
Properties	VERA DARRAH, JOSEPHINE YATES, MARILYN MAWDSLEY, CATHERINE REES
Wardrobe.....	DOLLY HOWARD, STEPHANIE HUGHES, SYLVIA BENNETT, GWEN WATKIN, RAE EVANS
Hair Styling.....	ENID PILLING
Stage Assistants	CHRIS. HASKEY, CLIVE SOUTHWORTH, MICHAEL TAYLOR, ALAN BURTON, MARK DARRAH, PETER CHESTER
Lighting.....	MALCOLM STEWART, JOHN EVANS
Music and Effects.....	RON TREANOR, LAURA MAYHEW

Hon. Business Manager and Licensee.....	G. O. WALLIS-PALMER
Hon. Theatre Letting Secretary.....	CHRIS. MOOR
Hon. Box Office Manager.....	NORAH PURSER
Hon. Publicity Manager.....	ROY HEATH
Hon. Stage Director.....	TREVOR LIVESEY

THE SOUTHPORT DRAMATIC CLUB offers its sincere thanks for the following properties kindly loaned: Mannings (Southport) Ltd., Metal Works, 49b, Stamford Road for *Garden Furniture*; Gibson's, Market Street, for *Glass and Chinaware*; Giddons, London Street, for *Pictures*.

Photographs by C. H. Loker, 21a Hoghton Street, Southport.

TELEPHONE BOOKINGS.—Seats booked by telephone should be claimed as soon as possible. Box Office Telephone Nos. (2 lines) 3021 or 55198.

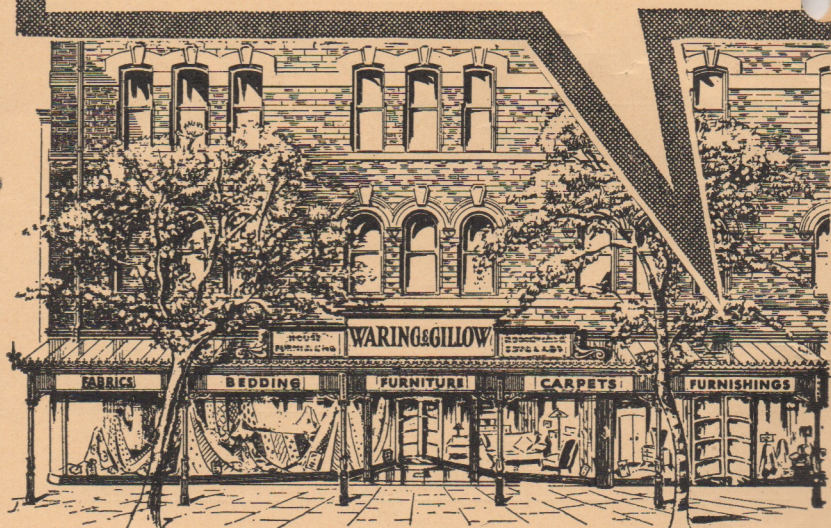
REFRESHMENTS SERVED IN THE FOYER DURING THE INTERVALS
★ SMOKING IS PROHIBITED IN THE AUDITORIUM ★

The Public may leave at the end of the Performance by all exits, and all exit doors will be at that time open. If the Public leaves in an orderly manner
THIS THEATRE CAN BE EMPTIED IN THREE MINUTES OR LESS

WARING & GILLOW

one of Southport's finest shops

You'll always enjoy dealing with Waring & Gillow
Their range of goods and services is tremendous :
from fine furnishings beautifully displayed in
spacious showrooms to a wonderful selection of
furnishing fabrics.



Dreams become homes at

WORLD FAMOUS
Waring and Gillow
LIMITED

LORD STREET - SOUTHPORT - Phone 56877

AND AT LIVERPOOL, MANCHESTER, LANCASTER, WIGAN AND CHESTER

MOST GENEROUS HIRE PURCHASE FACILITIES

★ OPEN ALL DAY SATURDAY ★

FORTHCOMING ATTRACTIONS AT THIS THEATRE

**THE NEXT PRODUCTION OF
THE SOUTHPORT DRAMATIC CLUB**

will be

“The Burning Glass”

A play by CHARLES MORGAN

Produced by JOYCE GOLDSWORTH

Opening on Friday, 5th November, 1965 for 8 Nights

at 7-45 p.m.

Box Office open Daily at 11 a.m. from Monday, 1st November.

THEATRE GROUP I *presents*

MONDAY, 15th NOVEMBER, 1965 at 7-30 p.m

“Edward II”

by CHRISTOPHER MARLOWE

Produced by CHARLES ALTY

Assisted by MAUREEN NORTON

TUESDAY, 16th NOVEMBER, 1965, at 7-30 p.m.

“Richard II”

by WILLIAM SHAKESPEARE

Produced by RAY WATERHOUSE

Assisted by SHEILA IRWIN

G.C.E. SYLLABUS PLAYS

SEATS 5/-, 4/- and 3/-

Tickets for both shows can be purchased for 2/3rds of the total cost

Box Office opens Saturday, 13th November, 1965.

THE ROYAL ACADEMY OF DRAMATIC ART *presents*

“SAINT JOAN”

by GEORGE BERNARD SHAW

Directed by MILO SPERBER

On Friday and Saturday, 19th/20th November, 1965

WATCH LOCAL PRESS FOR FURTHER DETAILS

The Bookshop of Quality and Note



C. K. BROADHURST & CO., LTD.

5 & 7 MARKET STREET, SOUTHPORT.

Phone 2064