



LITTLE
THEATRE
SOUTHPORT



The
Southport Dramatic
Club

presents

The Curious Savage

by

John Patrick

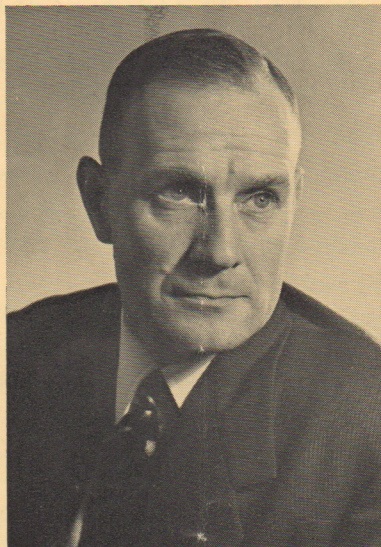
November 22nd

1 9 5 7

for Eight Nights

★ at 7-45 ★

Producer's Comments



BENNY DARRAH

“ And if I laugh at any mortal thing—
'Tis that I may not weep.”

These lines appear on the title page of the acting edition of our play. They are particularly appropriate. The author uses his shafts of wit with great skill, breaking the tension of poignant situations with laughter time after time.

Although the setting of the play is a town in Massachusetts, we have deliberately avoided the use of ‘ American accents ’ though retaining the American idiom. We feel that the action of the play could just as easily be taking place in England—in Southport, perhaps. Any false accent might destroy the sincerity we feel in presenting this play. We have all come to love the gentle guests staying at “ The Cloisters.”

If you, our audience, find them lovable and amusing too, we shall have attained our prime objective of entertaining you. At the same time our pleasure in performing this charming play will be intensified and our hopes fulfilled.

BENNY DARRAH.

"The Curious Savage"

A Comedy in Three Acts

by JOHN PATRICK

Characters :

The Guests :

Florence RAY EVANS
Hannibal ARTHUR PEDLAR
Fairy May PEGGY INCE
Jeffrey ANTHONY PEDLAR
Mrs. Paddy MARGARET CAMPION

The Family :

Titus WILLIAM ROGANS
Samuel JOHN WRIGHT
Lily Belle HILARY HILL
Ethel DOROTHY TODD

The Staff :

Miss Wilhelmina ANN GRALEY
Dr. Emmett JOHN LESLIE

The Play produced by BENNY DARRAH

SYNOPSIS OF SCENES

The action of the play takes place in the living-room of
"The Cloisters" in a town in Massachusetts.

ACT I

Scene 1. Night. Scene 2. The next morning.

Interval

ACT II

Scene 1. That night, after dinner. Scene 2. A few nights later.

Interval

ACT III

A few minutes later.

Setting designed, constructed and painted by JACK WILLIAMS.

HON. STAGE STAFF :

<i>Stage Manager</i>	ARTHUR TATTERSALL
<i>Assistant Stage Managers</i>	RON NETHERTON, MARGARET HOYLE
<i>Property Mistress</i>	VERA DARRAH
<i>Assistant Property Mistress</i>	HILDA THERKILDSEN
<i>Wardrobe Mistresses</i>	EDNA DAVIES, CHRIS WOOD
<i>Assistant Wardrobe Mistress</i>	JESSIE CROSTON
<i>Stage Assistants</i>	JOHN CLAYTON, BRIAN HEATON
<i>Electricians</i>	CHRIS. MOOR, DEREK HAYWOOD
<i>Musical Director</i>	JANET BELLWOOD

THE CLUB PERMANENT STAGE OFFICIALS :

<i>Stage Director</i>	WILLIAM ROGANS
<i>Scenic Director</i>	JOHN ADAMS

<i>Hon. Business Manager and Licensee</i>	G. O. WALLIS - PALMER
<i>Hon. Assistant Business Manager</i>	ROY HEATH
<i>Hon. Publicity Manager</i>	RONALD S. GOODALL
<i>Hon. Assistant Publicity Manager</i>	ARTHUR TATTERSALL
<i>Hon. Box Office Manager</i>	NORAH PURSER

THE SOUTHPORT DRAMATIC CLUB offers its sincere thanks for the following properties kindly loaned :

Atkinson Art Gallery, Southport for *Pictures*; M. Fletcher (Master Furrier) Ltd., 415, Lord Street, Southport for *Furs*; Howard Models Ltd., 575, Lord Street, Southport for *Hats*; U.S. Air Force, Ruislip, Middlesex, for *Parchesi Game*. Brian Ball, 47, Tulketh Street Southport for a *Stool*.

Photographs by Graham Bailey Photography, Hill Street, Southport.

TELEPHONE BOOKINGS.—Seats booked by telephone should be claimed THE DAY BEFORE THE PERFORMANCE, otherwise they are liable to be sold. Box Office Telephone Nos. (2 lines) 3021 or 551981.

REFRESHMENTS SERVED IN THE FOYER DURING THE INTERVALS
★ SMOKING IS PROHIBITED IN THE AUDITORIUM ★

The Public may leave at the end of the Performance by all exits, and all exit doors will be at that time open. If the Public leave in an orderly manner

THIS THEATRE CAN BE EMPTIED IN THREE MINUTES OR LESS.

WARING & GILLOW

FOR

RADIO

AND

TELEVISION

When you're thinking of buying TV—think of us. We have a remarkable range of TV sets, radios and radiograms, all attractively displayed in our extensive showrooms. We will willingly demonstrate any set in your own home—without the slightest obligation.

We are the Main Agents in the Northwest for 'GRUNDIG' Radios, Radiograms and Recorders. All models can be supplied from stock.

3 WAYS TO PAY

* HIRE PURCHASE

50% deposit.

* CREDIT SALE

Goods become yours on making the first of 9 equal monthly payments.

* BUDGET ACCOUNT

Credit up to 8 times an agreed monthly payment.

For example :

17 in. R.G.D. 1756 Television.

Cash price £72.9.0.

H.P. Deposit £36.4.6 and 24 monthly payments of 33/3.

CREDIT SALE: No deposit — nine monthly payments of £8.8.0.

Hire Purchase customers are welcome at

WARING & GILLOW

(SOUTHPORT) LTD.

LORD STREET, SOUTHPORT. Phone 56877

and at Liverpool - Manchester - Lancaster

OPEN ALL DAY SATURDAY

★ As a SPECIAL ATTRACTION for the Festive ★
Season

★ *The Southport Dramatic Club* ★

★ *will present at the Little Theatre* ★

★ For Eight Nights and Two Matinees commencing ★
★ FRIDAY, 3rd JANUARY, 1958 ★

★ ● ★

★ "*The Princess and the Swineherd*" ★

★ A Play by NICHOLAS STUART GRAY ★

★ Produced by JOHN EVANS ★

★ Evenings at 7-45 — Matinees (4th and 11th January) at 2-30 ★

★ PRICES: Evenings 4/-, 3/-, 2/- Matinees 3/- & 2/- ★
★ Special concessions for Parties of 20 and over. ★

★ ★ PLEASE BOOK EARLY ★ ★

★ LITTLE THEATRE ★
★ SOUTHPORT ★

★ ★
★ The Theatre Proper and The Foyer ★
★ are available for sublets. ★

★ ★
★ Theatrical Performances. Recitals, Conferences. ★
★ Bridge Drives, Meetings, &c. ★

★ ★
★ Particulars from the Hon. Contracts Secretary ★
★ for sublets: ★

★ C. S. PURSER, 58 Emmanuel Road, ★
★ SOUTHPORT ★

★ Tel. 88099 ★

The Bookshop of Quality and Note



C. K. BROADHURST & CO.

5 & 7 MARKET STREET, SOUTHPORT. Phone 2064