

LITTLE
THEATRE
SOUTHPORT

The
Southport Dramatic
Club

presents

The River Line

by

Charles Morgan

MARCH 4th
1 9 5 5
for Eight Nights
:: at 7-45 ::

★ THE NEXT PRODUCTION AT THIS THEATRE ★

★ The Welles Players ★

★ will present ★

★ "The Man With a Load of Mischief" ★

★ A Comedy set in the Georgian Period ★

★ By ASHLEY DUKES ★

★ Produced by ROLAND LUMBY ★

★ Commencing TUESDAY, 15th MARCH, 1955 ★

★ for Five Nights commencing 7-45 p.m. ★

★ 1/6, 2/6, 3/6 ★

★★

★ Book Now ! ★

★ The Final Production of the Season ★

★ by ★

★ The Southport Dramatic Club ★

★ will be ★

★ "WATERS OF THE MOON" ★

★ A Delightful Play ★

★ By N. C. HUNTER ★

★ Produced by JOHN S. WOOD ★

★ FRIDAY, 25th MARCH, 1955 ★

★ for Eight Nights at 7-45 p.m. ★

★ Box Office opens at 11 a.m. on MONDAY, 21st MARCH. ★

★ BOOK EARLY ★

★ *Programme Notes* ★

★ "The River Line" was first thought of by the author ★
★ in terms of the theatre. "The present play," he writes, "is ★
★ far from being an adaptation or dramatization of my novel of ★
★ the same name. Rather was the novel, in effect, a study for ★
★ the play, written because for a time the structure of the ★
★ play avoided me." ★

★ The theme of the play, is the predicament of us all, who ★
★ being men and women of peaceful mind, nurtured in a rule ★
★ of law derived from Rome and tempered by Christianity, ★
★ find ourselves in a gangster world where great hordes have ★
★ rejected these values and are determined to wipe away even ★
★ the memory of them from the earth. Where does our ★
★ responsibility lie? With what weapons and in what spirit ★
★ are we to resist? How shall we live in an age of violence? ★
★ And if, not shirking action but seeking interior quiet in the ★
★ midst of it, we ourselves fall into violent error, how shall ★
★ we be absolved? ★

★ **SPECIAL ANNOUNCEMENT !** ★

★ ★ ★ ★

★ **May 28th onwards** ★

★ **RONALD BRANDON** ★

★ **AND** ★

★ **DICKIE POUNDS** ★

★ **INTIMATE SUMMER SHOW** ★

★ **"OUT OF THE BLUE"** ★

★ ★

"The River Line"

A Play in Three Acts
By CHARLES MORGAN



CHARACTERS

(in order of their appearance)

Philip Sturgess.....	DONALD ANDERSON
Commander Julian Wyburton, R.N. (<i>retired</i>)	KENNETH DUNCAN
Marie Chassaigne	MICKEY PEERS
Mrs. Muriven	NANNE BURSTALL
Valerie Barton	PATRICIA FORD
Major John Lang (<i>called Heron</i>)	RAY JEFFS
Dick Frewer	ROY HEATH
Pierre Chassaigne	FERNAND SALMON

The Play produced by DUDLEY S. WOLF.

SCENES

ACT I

Scene 1. The garden of the Wyburton's house in Gloucestershire. A Friday in July, 1947. Before dinner.

Scene 2. The same. After dinner.

Interval

ACT II

Scene 1. The granary of the Chassaigne's house at Blaise in the neighbourhood of Toulouse. July, 1943. 10-50 p.m.

Scene 2. The same. Three minutes to midnight.

Interval

ACT III

Scene 1. As in Act I. July, 1947. The next morning, Saturday.

Scene 2. The same. That evening.

Scenery designed, constructed and painted by ARTHUR NUGENT.

HON. STAGE STAFF

Stage Manager	DONALD SMITH
Assistant Stage Managers	SHIRLEY INGHAM, ANNE DIXON
Property Mistress	ESTHER S WOOD
Assistant Property Mistresses	{ DORIS LATCHFORD, LESLIE BURT JOYCE FOGG, MARGARET KEARNS
Wardrobe Mistress	EDNA DAVIES
Assistant Wardrobe Mistresses	LAL PARKER
Stage Assistants	NEVILLE GORE, ASHBY BALL, KEN BURNS
Electrician	HAROLD DOBBS
Assistant Electrician	TED NICHOLSON
Musical Director	MARGARET OWEN

THE CLUB PERMANENT STAGE OFFICIALS

Stage Director	JOHN HOWARD
Scenic Director	F. E. BETTERIDGE

Hon. Business Manager and Licensee	G. O. WALLIS-PALMER
Hon. Assistant Business Manager	F. H. PETTITT
Hon. Publicity Manager	RONALD S. GOODALL
Hon. Box Office Manager	NORAH PURSER

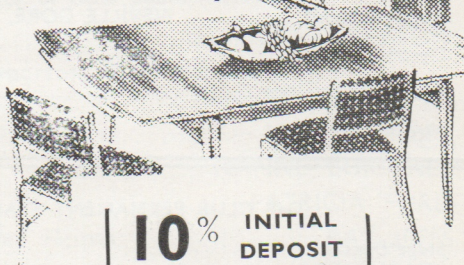
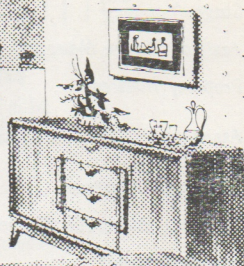
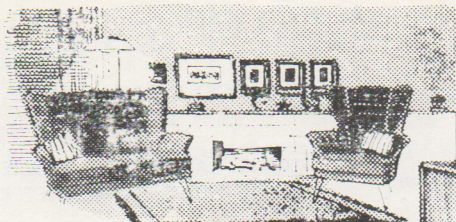
THE SOUTHPORT DRAMATIC CLUB offers its sincere thanks for the following properties kindly loaned :—

Garden Furniture, Broadbents, Southport Ltd., Chapel Street and R. B. Gibson, Ltd., Liverpool Road, Birkdale ; China, Gibson, Chapel Street ; Plants, E. B. Cookson & Son Ltd., St. Peter's Road, Birkdale. Photographs by Graham Bailey Photography, Hill Street, Southport. Hair Switch, W. A. Rimmer & Bros., Ltd., London Street. Several Recordings, Haslam-Burgess Productions Ltd., 32, Chapel Street, Southport.

TELEPHONE BOOKINGS.—Seats booked by telephone should be claimed THE DAY BEFORE PERFORMANCE, otherwise they are liable to be sold. Box Office Telephone Nos. (2 lines) **3021** or **551981**.

REFRESHMENTS SERVED IN THE FOYER DURING THE INTERVALS
★ SMOKING IS PROHIBITED IN THE AUDITORIUM ★

The Public may leave at the end of the Performance by all exits, and all exit doors will be at that time open. If the Public leave in an orderly manner THIS THEATRE CAN BE EMPTIED IN THREE MINUTES OR LESS.



FURNITURE

*and
exclusive
Furnishings
at to-day's
finest
HIRE
PURCHASE
TERMS*

**10% INITIAL
DEPOSIT**

5% per annum on
the balance — with
payments spread
over 24 months.

PURSERS invite you to call in and see the range of Contemporary and Traditional Furniture available for your choice—with Fabrics, Carpets etc., to complete your scheme. Catalogue and details of Hire Purchase terms on request.

WE WELCOME HIRE PURCHASE CUSTOMERS AT

BEN PURSER & SONS LTD.

Associated with **WARING & GILLOW LTD.**

143/151 LORD STREET, SOUTHPORT

Phone : 56877/8

★ **REMOVAL & STORAGE SPECIALISTS**

Open all day Saturday

★ THE NEXT PRODUCTION AT THIS THEATRE ★

★
★ **The Welles Players** ★

★ will present ★

★ **“The Man With a Load of Mischief”** ★

★ A Comedy set in the Georgian Period ★

★ By **ASHLEY DUKES** ★

★ Produced by **ROLAND LUMBY** ★

★ Commencing **TUESDAY, 15th MARCH, 1955** ★

★ for Five Nights commencing 7-45 p.m. ★

★ 1/6, 2/6, 3/6 ★

★★

★ **Book Now!** ★

★ The Final Production of the Season ★

★ by ★

★ **The Southport Dramatic Club** ★

★ will be ★

★ **“WATERS OF THE MOON”** ★

★ A Delightful Play ★

★ By **N. C. HUNTER** ★

★ Produced by **JOHN S. WOOD** ★

★ **FRIDAY, 25th MARCH, 1955** ★

★ for Eight Nights at 7-45 p.m. ★

★ Box Office opens at 11 a.m. on **MONDAY, 21st MARCH.** ★

★ **BOOK EARLY** ★

The Bookshop of Quality and Note



C. K. BROADHURST & CO.

5 & 7 MARKET STREET, SOUTHPORT. Phone 2064