



LITTLE
THEATRE
SOUTHPORT

The
Southport Dramatic
Club

presents

Lady Windermere's
Fan

by

Oscar Wilde

OCTOBER 8th
1 9 5 4
for Eight Nights
:: at 7-45 ::

Victorian Jewellery

of which we have the finest collection in the North of England

Garnets Amethysts
Peridots Pearls
Crystal Rose Quartz
Aquamarines Chrysoprase
and Cornelian
in delicate Gold Settings

We are GEMMOLOGISTS and VALUERS

Careful Restorations and Alterations to your own Jewellery
carried out on the premises

Ear-Piercing by appointment, 35/- including Gold Sleepers

P I D D U C K

The Jewellers

175 and 177, Lord Street. Southport

Telephone : 3653

Also at MARKET SQUARE, HANLEY.

Established 1841.

THE CHAIRMAN SOUTHPORT DRAMATIC CLUB



CLIFFORD RAYNER, ESQ.

The Southport Dramatic Club has pleasure in welcoming all Patrons, Subscribers and First Nighters to its opening presentation, "Lady Windermere's Fan," produced and directed by Mabel Hall, who will be remembered for her outstanding production of "Spring at Marino" last year.

This brilliant period comedy by Oscar Wilde was first produced at St. James' Theatre, London, in 1892, and met with immediate success.

A most interesting and varied selection of plays will be presented during the season. Our second play is a Thriller—"Intent to Murder"—and the pre-Christmas production, a Comedy entitled "Love's a Luxury."

After Christmas three more plays will be selected from the following :—

"The River Line," "The Constant Wife," "The Happy Marriage," "Waters of the Moon," and "Viceroy Sarah."

We look forward to a happy and successful season which we hope our Patrons will appreciate and enjoy.

CLIFFORD RAYNER.

AN INVITATION TO OUR PATRONS—Subscribers' Season Tickets and First Nighters' Tickets will be issued to cover the remaining FIVE Plays this Season at the following reduced rates :—

Subscribers' Season Tickets 16/- & 11/-. **First Nighters' Tickets 8 6.**

ALL ENQUIRIES TO THE BOX OFFICE

LADY WINDERMERE'S FAN

A Comedy in Four Acts

By OSCAR WILDE

Characters in order of appearance :

Lady Windermere	PEGGY INCE
Parker	JOHN HOWARD
Lord Darlington	ROLAND LUMBY
The Duchess of Berwick	MARGARET HOYLE
Lady Agatha Carlisle	VERA BURNS
Lord Windermere	JAMES SMITH
Lady Jedburgh	OLIVE JAMES
Lady Plimdale	AUDREY MEE
Mr. Charles Dumby	MICHAEL PATRICK
Mrs. Cowper-Cowper	SHIRLEY INGHAM
Mr. Hopper	PETER GRIFFITHS
Lord Lorton	WILFRED CLARK
Mr. Cecil Graham	HARRY DAWES
Mrs. Erlynne	DAWN McCORMICK
Rosalie	SHIRLEY STAVELEY - DICK
	ROSE K. BELL
Guests.....	BETTY HANSFORD
	DONALD ANDREW
	WILLIAM ROGANS

The Play produced and directed by MABEL HALL.

SYNOPSIS OF SCENES

The Scene is laid in London in the 1890's.

ACT I

Morning-room in Lord Windermere's House

Interval 12 mins.

ACT II

Drawing-room in Lord Windermere's House

Interval 12 mins.

ACT III

Lord Darlington's Rooms

Interlude 5 mins.

ACT IV

Morning-room in Lord Windermere's House

Scenery designed by JOHN MACKEN, Master at Soutport School of Art.

Constructed and painted by ARTHUR NUGENT.

TELEPHONE BOOKINGS.—Seats booked by telephone should be claimed THE DAY BEFORE PERFORMANCE, otherwise they are liable to be sold. Box Office Telephone Nos. (2 lines) 3021 or 551981.

REFRESHMENTS SERVED IN THE FOYER DURING THE INTERVALS
★ SMOKING IS PROHIBITED IN THE AUDITORIUM ★

The Public may leave at the end of the Performance by all exits, and all exit doors will be at that time open. If the Public leave in an orderly manner, THIS THEATRE CAN BE EMPTIED IN THREE MINUTES OR LESS.

Producer's Letter

Dear Audience,

"Lady Windermere's Fan" was written by the man who was the greatest influence in restoring genuine comedy to the English Stage.

"It was Wilde's re-introduction of the comedy, wit and satire that detached the Stage from melodrama and brought comedy back to its genuine function of an ironical or satirical commentary on life." Those of you who have formed an opinion of the character of Oscar Wilde will realise that his hatred of social injustice was deep and sincere, but the cleft in his emotional and mental life had a strong influence on his work. There is an odd mixture of sentimentality and sophisticated wit, which makes this play a difficult vehicle for amateurs.

The alternation of depth and superficiality demands a high standard of acting, and emotion must be sincerely expressed to convince you of the existence of this glittering, unfamiliar world. Please try to appreciate the efforts and concern of all these people who try to keep the theatre alive for you, and the responsibility they accept in presenting a play like this.

Please show your appreciation of the illusion they present; the sets, the furniture, hair, costumes, music and lighting; the every-ready prompt, and the strenuous mechanics of backstage activities. Then enjoy your refreshment in the foyer discussing and criticising this fascinating play.

Criticism, Wilde contends, makes culture possible, but I do think appreciation of effort brings understanding and a warm reception and, if you think it justified, wide publicity, too!

Yours very sincerely,

MABEL HALL

HON. STAGE STAFF

Stage Managers	EDWARD HILL, BENNY DARRAH
Assistant Stage Managers	MAMIE COBB, VALERIE CLAYTON
Property Mistress	BETTY COLLINGS
Assistant Property Mistresses	ANN DIXON, MARIE THURMAN, MARGARET KEARNS
Wardrobe Mistress	HILARY HILL
Assistant Wardrobe Mistresses	EDNA DAVIES, ELSIE C. LOWETH
Stage Assistants	DONALD SMITH, TED NICHOLSON, KEN BURNS
Electricians	CHRIS. MOOR, DEREK HAYWOOD
Musical Director	MARGARET OWEN

THE CLUB PERMANENT STAGE OFFICIALS

Stage Director	JOHN HOWARD
Scenic Director	F. E. BETTERIDGE

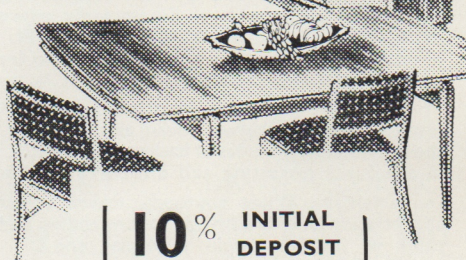
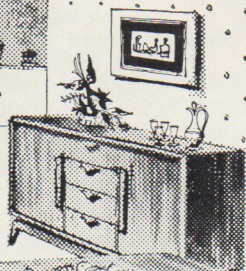
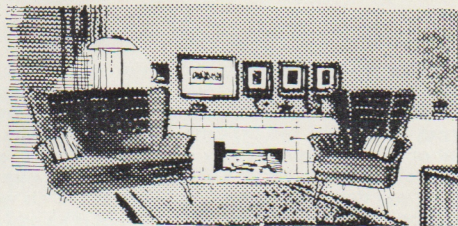
Hon. Business Manager and Licensee	G. O. WALLIS-PALMER
Hon. Assistant Business Manager	F. H. PETTITT
Hon. Publicity Manager	RONALD S. GOODALL
Hon. Box Office Manager	NORAH PURSER

THE SOUTHPORT DRAMATIC CLUB offers its sincere thanks for the following properties kindly loaned:

Aldams, Tulketh Street, *China and Pictures*; E. B. Cookson & Son Ltd., St. Peters Road, Birkdale, *Palms*; 'Bric-a-Brac', Union Street, *Ornaments and Pictures*; Turner & Booth, Ltd., Lord Street, *Chandelier*; Blenkinson, Burton Arcade. *Furniture*.

Photographs by Graham Bailey, Hill Street, Southport.

Our thanks are also due to Club Members Edna Davies, Elsie C. Loweth, Ivy Payne, Amy Hughes, Irene Holmes, Edna Collier, Ethel Sutcliffe, Betty Hansford, Rose K. Bell, Enid Thompson and Molly Douglas, under the supervision of Hilary Hill, for the making of Costumes, and to the Southport School of Art for making the Plaster Busts.



FURNITURE

*and
exclusive
Furnishings
at to-day's
finest
HIRE
PURCHASE
TERMS*

10% INITIAL
DEPOSIT

5% per annum on
the balance — with
payments spread
over 24 months.

PURSERS invite you to call in and see the range of Contemporary and Traditional Furniture available for your choice—with Fabrics, Carpets etc., to complete your scheme. Catalogue and details of Hire Purchase terms on request.

WE WELCOME HIRE PURCHASE CUSTOMERS AT

BEN PURSER & SONS LTD.

Associated with **WARING & GILLOW LTD.**

143/151 LORD STREET, SOUTHPORT

Phone : 56877/8

★ **REMOVAL & STORAGE SPECIALISTS**

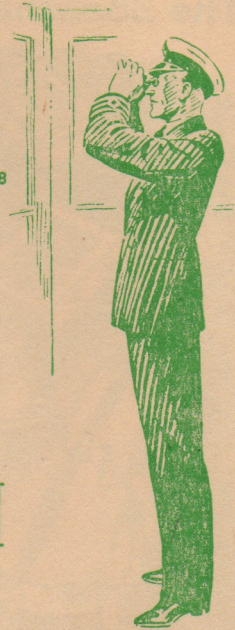
OPEN ALL DAY SATURDAY (Closed for Lunch 1 p.m. to 2-15 p.m. Daily).

**FAR-SEEING
MEN**

MAKE
NO
MISTAKE
THEY CHOOSE



Established 1818



● The Firm that has served the Service for over 135 years ●

NAVAL & CIVIL TAILORS & OUTFITTERS

MILLER, RAYNER & HAYSON
LIMITED
24 NORTH JOHN STREET, LIVERPOOL

'Phone: CENTRAL 7511

SOUTHAMPTON
35-36 Oxford Street
Phone 22771

LONDON
113 Fenchurch Street
E.C.3
Royal 2995

TILBURY DOCK
Phone Tilbury 3252
ROYAL ALBERT DOCK
Phone: Albert Dock 1169

The next production of
The Southport Dramatic Club

will be

“INTENT TO MURDER”

A Thriller by LESLIE SANDS
Produced by NANNE BURSTALL

Friday, 5th November, 1954

For Eight Nights at 7-45 p.m.

Box Office opens at 11 a.m. on Monday, 1st November.

BOOK EARLY !

The Bookshop of Quality and Note



C. K. BROADHURST & CO.

5 & 7 MARKET STREET, SOUTHPORT. Phone 2064