

LITTLE
THEATRE
SOUTHPORT

The
Southport Dramatic
Club

presents

Glorious Morning

A PLAY IN THREE ACTS

BY

NORMAN MACOWAN



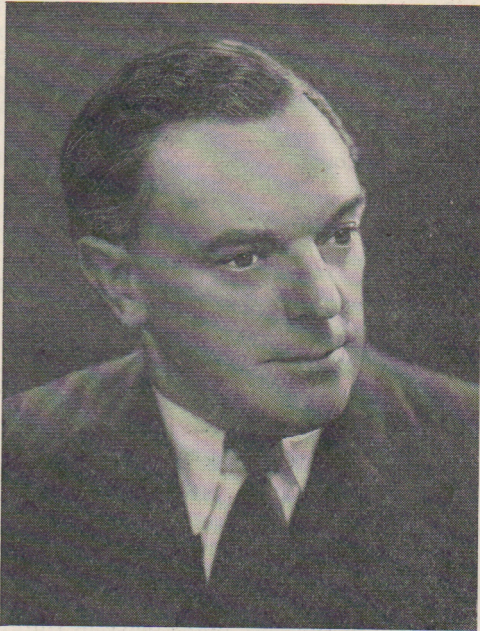
DECEMBER 4th
1 9 4 7
for Nine Nights
:: at 7-30 ::



Characteristic
of
cannell

215 LORD ST.
SOUTHPORT

The Chairman,
SOUTHPORT DRAMATIC CLUB.



ROBERT MARTIN, Esq., J.P.



Our programme this season is ambitious, and because we aim at a very high standard in all we do, the story of the Southport Dramatic Club through the years is one of developing success, and its productions are eagerly awaited by a large and growing public.

This year a First-Nighters' Club has been formed and already it shows every sign of becoming the means of introducing our work to an even wider circle of friends.

You have seen or heard about the productions of "The Rose Without A Thorn," "Claudia" and "The Cradle Song," and other plays to follow in the New Year are "Mrs. Moonlight," "Grand National Night" and "The Importance of being Earnest."

To-night we offer you our production of the play "Glorious Morning," so for the next two hours let me ask you to sit back and enjoy on the stage the results of devoted work and pride of achievement.

ROBERT MARTIN.

CAST

(in order of appearance):

Anna Veerkind (Daughter-in-law to Anton Veerkind) ...	MARGARET HOYLE
Katrina Hoefler	JOAN DUNCAN
Woden (Grandson of Anton Veerkind)	TONY CUPPER
Anton Veerkind	FREDDIE RUSSELL
Leda (his Grand-daughter)	PAULINE HUNT
Hans Skaedia (of Litzia University)	ALAN WILKINSON
Gurgani (of the Supreme Council)	JOHN S. WOOD
Rutzstein	{ JOHN ANDERTON
Buloff	{ RONALD GOODALL
Nekell	{ MICHAEL HARDS
Leman	{ BILL TODD
Jacob Kellner ...	{ ANTHONY BEER
Ruth Kellner ...	{ KAY MOFFAT
1st Soldier.....	VERNON RAYNER
2nd Soldier	RAY JEFFS
An Officer	FRED COLLIER

The Play produced by JOSEPH CROSSLEY

FRANK BURLS and PEGGY MOSLIN at Two Pianos.

SYNOPSIS OF SCENES.

The action of the play takes place in Burglitz, the capital of Burglitzia, a province of Zagnira.



ACT I.

A room in Anton Veerkind's house.

INTERVAL

ACT II.

Scene 1—The next day. A room in the Town Hall.

Scene 2—A week later. A room in Anton Veerkind's house.

Scene 3—Two days later. The same.

INTERVAL

ACT III.

Scene 1—Six days later. A room in the Town Hall.

Scene 2—Next morning. An entrance-hall of the Prison.

The Public may leave at the end of the Performance by all exits, and all exit doors must at that time be open.

If the Public leave in an orderly manner THIS THEATRE CAN BE EMPTIED IN THREE MINUTES OR LESS.

Stage Staff for this Production :

Hon. Stage Manager JACK WRIGHT
Hon. Assistant Stage Manager..... MARGARET WILKINSON
Hon. Property MistressESTHER S. WOOD
Hon. Assistant Property MistressMARGARET CAMPION
Hon. Wardrobe Mistress MAY JONES
Hon. Assistant Wardrobe Mistress KATHLEEN JACKSON
Hon. Electrician.....FRANK SMITH
Scenic Artist and Stage Carpenter.....ARTHUR NUGENT

Hon. Business Manager and LicenseeG. O. WALLIS-PALMER
Hon. Assistant Business ManagerALAN WORRALL
Hon. Publicity Manager RONALD S. GOODALL
Hon. Box Office Manageress Mrs. NORAH PURSER

Furniture by Messrs. Royse, Dennison & Smith, Lord Street.
Pewter and China kindly loaned by Messrs. Aldams, Tulketh Street.
Persian Rugs by courtesy of Messrs. Ben Purser & Sons Ltd., Lord Street.
Photographs by Kay & Foley Ltd., Lord Street.
Hair plaits by W. A. Rimmer & Bros. Ltd., London Street.

TELEPHONE BOOKINGS

Seats booked by Telephone should be claimed
THE DAY BEFORE PERFORMANCE, otherwise they are liable to be sold.

Box Office Telephone No. 3021

REFRESHMENTS served during the Interval in the Foyer
SMOKING IS PROHIBITED IN THE AUDITORIUM.

NEXT PRODUCTION AT THIS THEATRE :

THE WELLES DRAMATIC CLUB

PRESENTS

"TONS OF MONEY"

By W. Evans and Valentine.

Commencing Tuesday, 16th December, 1947, for Five Nights at 7-30

PRODUCER'S NOTE.

I cannot do better in this note on "GLORIOUS MORNING" than to quote from the "Daily Telegraph and Morning Post" of 14th July, 1938, an article by Sydney W. Carroll, who said: "I offer Norman MacOwan my congratulations on being the author of one of the finest and most striking plays. Divested of all rhetoric, free from any vestige of sentimentality, it sets out a gospel plainly, directly, forcefully, and with complete integrity. Seldom have we in our playhouses so distinguished and temperate a play dealing with so vital a purpose in so unsensational and yet so imaginative a manner."

This remarkable play, moving, persuasive and curiously exciting, has so much aroused the interest of the REV. WILLIAM PAXTON that it is his intention to make the play the subject of his sermon on Sunday evening next, the 7th December.

JOSEPH CROSSLEY.

FRANK BURLS and PEGGY MOSLIN at Two Pianos

will play excerpts from the following:

FARANDOLE (from L'Arlesienne)	Bizet	PRELUDE TO A PLAY	Jacobson
OLD VIENNA	Godowsky	INTERMEZZO	York Bowen
GREENSLEEVES	Vaughan Williams	HUNGARIAN RHAPSODY No. 5	Liszt
PIERROT TRISTE	Cyril Scott	POLONAISE	Chopin
RHAPSODY ESPANA	Chabrier	WALTZ	Arensky

THE SOUTHPORT REPERTORY COMPANY

(in association with the Arts Council of Great Britain)

CHRISTMAS EVE onward at 7-30.

MATINEES: Boxing Day and Saturday, December 27th, and every subsequent Wednesday, Thursday and Saturday.

"Cinderella"

Book by V. C. Clinton Baddeley. Music by Walter Leigh and Gavin Gordon.

Produced by LIONEL HARRIS.

IN THE NEW YEAR ★

THE SOUTHPORT DRAMATIC CLUB
Presents

"Mrs. Moonlight"

By BENN LEVY.

Produced by NANNE BURSTALL.

For FIVE NIGHTS ONLY at 7-30
from TUESDAY, 27th JANUARY, 1948.

BOOK YOUR SEATS EARLY!

Box Office opens at 11 a.m., SATURDAY, JANUARY 24th.

Phone 3021.

FIRST NIGHTERS' CLUB.

Members are kindly asked to note that, owing to the Season ending earlier than anticipated, the tickets which are marked for the APRIL production will now be available for the first night of "Mrs. Moonlight" on TUESDAY, 27th JANUARY, 1948.

★ BOOK THE DATE NOW ★

175 LORD STREET
SOUTHPORT
Telephone 3653



MARKET SQUARE
HANLEY
Telephone STOKE 5070

PIDDUCK

Jewellers since 1841
Licensed Valuers and
Qualified Gemmologists



Specialists in Mounting and Designing

Antique and Modern Silver

The Wayfarers

Modern Art.



DECORATIVE FURNISHING ACCESSORIES
PICTURES. MIRRORS. LAMPS. POTTERY. GLASS

CHRISTMAS GIFTS

RADIOGRAMS . RECEIVERS . EQUIPMENT
AND MAINTENANCE

20 - 30
42 & 52 LEYLAND ARCADE
LORD STREET, SOUTHPORT

TELEPHONE 2514