



LITTLE  
THEATRE  
SOUTHPORT

The  
Southport Dramatic  
Club

*presents*

CLAUDIA

A Play in Three Acts

BY

ROSE FRANKEN

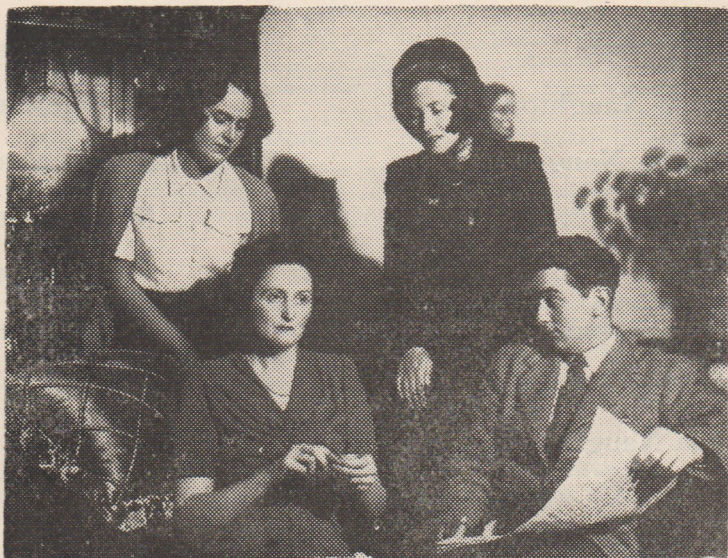


NOV. 13th  
1 9 4 7  
for Nine Nights  
:: at 7-30 ::



*Characteristic*  
of  
**cannell**

215 LORD ST.  
SOUTHPORT



A SCENE FROM THE PLAY.

*Photograph by  
Kay & Foley Ltd., Lord Street.*

*With acknowledgments to the  
"Southport Visiter"*

---

---

PRODUCER'S NOTE.

IT GAVE ME very much pleasure to accept the invitation to produce a play for the Southport Dramatic Club. This pleasure was enhanced by the fact that the play was "CLAUDIA."

This charming and moving story of human emotions, centred round a child wife, is one which must have almost universal appeal. Personally, it is one of my favourite plays, just as it is one of my favourite books. I hope you will derive as much pleasure from it as I have done.

LIONEL HARRIS.

## CAST

(in order of appearance):

Mrs. Brown . . . . .	RACHEL CROSSLEY
David Naughton . . . . .	PAT BENOLIEL
Claudia Naughton . . . . .	MARY COLLARD
Bertha . . . . .	MAMIE COBB
Fritz . . . . .	TOM EDEN
Jerry Seymour . . . . .	KEDRIC HOLDEN
Madame Daruschka . . . . .	MARIE BRADBURY
Julia Naughton . . . . .	MARGARET CAMPION

The Play produced by **LIONEL HARRIS**  
(by arrangement with the Southport Repertory Co. Ltd.)

The Misses **MARIE AND LUCIE PHILPOTTS, L.R.A.M.**, at Two Pianos.

---

---

## SYNOPSIS OF SCENES.



The action of the play takes place at the Naughton's Farm,  
70 miles from New York.

### ACT I.

A Friday evening in early Autumn.

### ACT II.

The following afternoon.

### ACT III.

Evening of the same day.

---

---

The Public may leave at the end of the Performance by all exits, and all exit doors must at that time be open.

If the Public leave in an orderly manner **THIS THEATRE CAN BE  
EMPTIED IN THREE MINUTES OR LESS.**

**Stage Staff for this Production :**

Hon. Stage Manager ..... JACK WRIGHT  
Hon. Assistant Stage Manager ..... BETTE WHEELER  
Hon. Scenic Director ..... DERICK BETTERIDGE  
Hon. Property Mistress ..... ESTHER S. WOOD  
Hon. Assistant Property Mistress ..... DAISY PIDDUCK  
Hon. Wardrobe Mistress ..... MAY JONES  
Hon. Assistant Wardrobe Mistress ..... KATHLEEN JACKSON  
Hon. Electrician ..... CHRIS. MOOR  
Hon. Musical Director ..... NORA CAMPION, A.R.C.M.  
Scenic Artist and Stage Carpenter ..... ARTHUR NUGENT

---

Hon. Business Manager and Licensee ..... G. O. WALLIS-PALMER  
Hon. Assistant Business Manager ..... ALAN WORRALL  
Hon. Publicity Manager ..... RONALD S. GOODALL  
Hon. Box Office Manageress ..... Mrs. NORAH PURSER

---

Furniture by Messrs. Royse, Dennison & Smith, Lord Street.  
China, Glass, etc., by courtesy of Aldams, Tulketh Street.  
Millinery executed by Howard Models, Lord Street.  
Hair plaits kindly loaned by W. A. Rimmer & Bros. Ltd., London Street.  
Photographs by Kay & Foley Ltd.,  
and taken at the home of Joseph Crossley, Esq., by his kind permission.

---

---

**TELEPHONE BOOKINGS**

---

Seats booked by Telephone should be claimed  
**THE DAY BEFORE PERFORMANCE**, otherwise they are liable to be sold.

**Box Office Telephone No. 3021**

---

---

**REFRESHMENTS** served during the Intervals in the Foyer  
**SMOKING IS PROHIBITED IN THE AUDITORIUM.**

---

---

Next Production at this Theatre :

THE SOUTHPORT DRAMATIC CLUB presents

**"The Cradle Song"**

By Gregorio and Maria Martinez Sierra. English version by John Underhill.

*Produced by NANNE BURSTALL.*

**TUESDAY, NOV. 25th, 1947, at 7-30 p.m. FOR FIVE NIGHTS ONLY.**

Box Office opens at 11 a.m. Saturday, Nov. 22nd. Book Early.

THE SOUTHPORT DRAMATIC CLUB

Presents

## **"Glorious Morning"**

By NORMAN MACOWAN

Produced by JOSEPH CROSSLEY

FOR NINE NIGHTS at 7-30, from  
THURSDAY, 4th DECEMBER, 1947

BOOK YOUR SEATS EARLY

BOX OFFICE OPENS AT 11 a.m., MONDAY, DEC. 1st.

Phone 3021

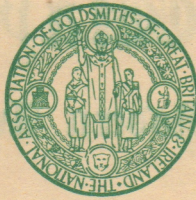
### FUTURE PRODUCTIONS.

*THE SOUTHPORT DRAMATIC CLUB will present a further Three Plays during the 1947-8 Season, selected from the following :*

The Importance of being Earnest	Time and The Conways
Lot's Wife	The Constant Wife
Mrs. Moonlight	Uncle Harry
There's Always Juliet	Grand National Night

★ WATCH FOR THE DATES ★

175 LORD STREET  
SOUTHPORT  
Telephone 3653



MARKET SQUARE  
HANLEY  
Telephone STOKE 5070

# PIDDUCK

---

---

*Jewellers since 1841*

*Licensed Valuers and  
Qualified Gemmologists*



*Specialists in Mounting and Designing*

---

*Antique and Modern Silver*

# The Wayfarers

Modern Art.



DECORATIVE FURNISHING ACCESSORIES  
PICTURES. MIRRORS. LAMPS. POTTERY. GLASS

RADIOGRAMS . RECEIVERS . EQUIPMENT  
AND MAINTENANCE

28 - 30 LEYLAND ARCADE  
41 & 42 LORD STREET, SOUTHPORT

TELEPHONE 2514