

Southport Dramatic Club

DISPOSING OF THE BODY

A GRIPPING MYSTERY THRILLER
BY HUGH WHITEMORE
DIRECTED BY CELIA TIMMINGTON

20TH - 28TH FEBRUARY 2015
7.45PM

NO BOOKING CHARGES
OR CARD FEES


LITTLE THEATRE
Home of the
Southport Dramatic Club

SPONSORED BY


mitchell&wright
printers limited

BOX OFFICE TEL: (01704) 530521/530460
WWW.LITTLETHEATRESOUTHPORT.CO.UK
HOGHTON STREET, SOUTHPORT PR9 0PA



**Pre Theatre
Dinner
10% off
your total bill**

when dining in the restaurant
when theatre ticket is shown

the
Office
BAR & RESTAURANT



Bar menu served
Tues - Sun 11.00am - 4.00pm

Restaurant serving lunchtime menu
from £8.95

Tues - Sat 12.00pm - 2.30pm

£10 Tuesdays, 2 courses
every Tuesday from
5.30pm - 9.00pm

TDH & A La carte also available

Tues - Thur TDH £13.95

Fri - Sat £15.95

A La Carte Also available

Sunday @ the office

with live music from 2.00pm

Bar menu 12.00pm - 4.00pm

Restaurant 12.00pm - 7.00pm

with menus from £8.95

10% discount cannot be used
when dining on the £10 menu

for bookings telephone: 01704 543354
9b Houghton Street, Southport PR9 0TE



DIRECTOR'S NOTES

What type of play is '*Disposing of the Body*'? This is a question I have been asked several times since commencing rehearsals. As things progressed it was strange to feel an insecurity; was it a mystery, a whodunnit, a thriller, a farce, or was it even a morality play? The jury is still out.

This play is about unexpected passion, adultery and its aftermath, the intrigue being as much in the moral as well as in the physical aspect. Don't be alarmed. The author, Hugh Whitmore, very cleverly takes you on a fun ride, but makes the seat just uncomfortable enough to nudge your thinking about moral implications, which are gently underlined at the end of the play.



CELIA TIMMINGTON
DIRECTOR

Playing on a complicated open set is very demanding on the actors. Within seconds they must imagine themselves in Henry's old house in London, then going to and returning from his new home in Gloucestershire; visiting

neighbours, going driving, out dining, visiting hotels, and staying in Kate's house. Keep up audience! At least you don't have to remember the lines.

Holidays and the weather have made rehearsal time very short but the cast have worked so willingly and hard that they deserve to feel this has been a rewarding exercise. We have had fun!

Take this play seriously or not, as you feel. You will definitely have something to say about it afterwards. I hope you enjoy it.

Celia Timmington
Director



PRINT QUALITY THAT STANDS OUT



mitchell&wright
printersltd

Tel: 01704 535529 - Email: sales@mitchellwright.co.uk

THE AUTHOR

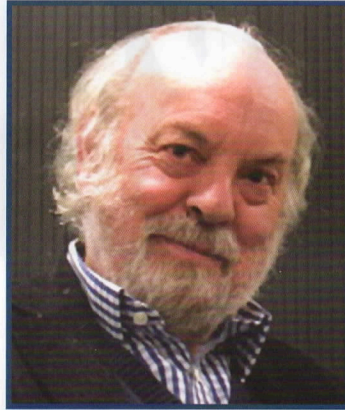
The screenwriter and English playwright Hugh Whitmore was born on June 16, 1936, in Tunbridge Wells, Kent. He attended the London Royal Academy of Dramatic Art (RADA) where he studied for the stage.

British television was where Whitmore started his writing career. He adapted stories from the likes of Somerset Maugham, Charlotte Brontë and Charles Dickens. He has been involved with Armchair Theatre, Play for Today and The Wednesday Play and has won Writers' Guild Awards on two occasions.

He has written scripts for films namely: *Man at the Top* (1973), *All Creatures Great and Small* (1975), *The Blue Bird* (1976), and *The Return of the Soldier* (1982). He also wrote the screenplay for the 1987 film *84 Charing Cross Road*, which starred Anne Bancroft and Anthony Hopkins, and was produced by Mel Brookes. More recently Whitmore was behind the screenplay for the films *Utz* (1992) and the 1996 version of *Jane Eyre* directed by Franco Zeffirelli.

Whitmore has also written for the stage and his plays have been presented across the world.

His 1977 work: *Stevie*, about the poet Stevie Smith's life, was made into a film with



Hugh Whitmore

Trevor Howard and Glenda Jackson. In 1983 he wrote *Pack of Lies* which opened at the Lyric Theatre in the West End and starred Judi Dench and Michael Williams. Dench was recognised for her performance at the Lawrence Olivier Awards where she received a Best Actress prize.

His most famous work is *Breaking the Code* (1986), which looks at the life of Alan Turing, who broke the German Enigma Code in the Second World War. He also penned *The Best of Friends in 1987*, *It's Ralph* (1991), *A Letter of Resignation*, *Disposing of the Body* (1999), *God Only Knows* (2001). In 2005 he was behind *As You Desire Me* and was the co-author of the play *The Last Cigarette* in 2009.

Whitmore has written for TV in America and his work in this field includes *Concealed Enemies* and *The Gathering*


Storm. *The Gathering Storm* (2002) was shown both in this country and America and looks at Churchill's life before the start of the Second World War. A sequel was made in 2009 called *Into The Storm*, again written by Whitmore. He received an 'Emmy' Award for his work on *The Gathering Storm*. The playwright also dramatised Bob Woodward and Carl Bernstein's book about the end of Nixon's presidency called *The Final Days*. It was nominated for an 'Emmy'. Maggie Smith appeared in Whitmore's 2003 adaptation called *My House in Umbria*.

The playwright has received recognition for his work and has won many prizes, including: the scripter award in Hollywood (*84 Charing Cross Road*), and a Communications award from the American Mathematical Society (*Breaking the Code*).

He is a Fellow at King's College, London and the Royal Society of Literature.

Alan Ayckbourn's

SNAKE IN THE GRASS



March 5th - 7th, 2015
Little Theatre
Southport.
Tickets £8
7:45 pm

A Dark Comedy
From The World's
Greatest Living
Playwright.

"A creepily,
scarily, eerily
enjoyable
evening."
(Sunday Times)

Directed By Cliff Gillies

Advanced Tickets
01704 808951

**Too Friendly
Theatre Company**

Box Office 01704 530521

Box Office open 11 am till 2pm every day except Sunday
from 26th February 2015. Or call the advance ticketline.

DISPOSING OF THE BODY

Hugh Whitmore's mystery thriller *Disposing of the Body* premiered at London's Hampstead Theatre in 1999. It ran from July 8 to August 28 and was directed by Robin Lefevre and starred Gemma Jones and Stephen Moore. Matt Wolf reviewed the show for *Variety* and wrote: "That dramatic staple — the adultery play — takes a teasing turn in *Disposing of the Body*, the Hugh Whitmore drama that fully lives up to the considerable promise of its title. The play's name suggests unmentionable skullduggery, but Whitmore, in

what is easily his most satisfying work since *Breaking the Code* over a decade ago, is interested in intrigue of the moral and not the physical sort." Whilst a review for *What's On Stage* praised the performances of Gemma Jones, Joanna McCallum and David Horovitch.

Mystery stories have taken many different forms over the last 200 years. Early works in this field include books by Wilkie Collins such as *The Woman in White* (1860) and *The Moonstone* (1868). Many believe this genre to be so

popular because of the creation of *Sherlock Holmes* by Sir Arthur Conan Doyle in 1887.

One of the best known mystery writers is Agatha Christie, whose most famous works include *Murder on the Orient Express* (1934) and *Death on the Nile* (1937). There was an increase in interest in mystery fiction in the 1930s and 40s, however this decreased when television became more popular. Today mystery stories are still popular and appear in the theatre on television and in films.



The Southports Gentlemen of Rock 'n' Roll Presents At The

FLEETWOOD HESKETH

SPORTS AND
SOCIAL CLUB
PR9 9XH

DON'T MISS TWO FABULOUS SHOWS FRIDAY MARCH 20TH 2015

Doors open 7:30 • Show 8:00 till late

WITH SWEDE DREAMZ OF

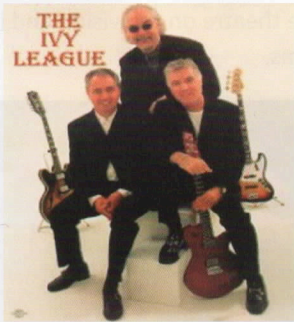


ABBA

THE UKS' PREMIER TRIBUTE SHOW



FRIDAY APRIL 10TH 2015



HIT RECORDERS

TOSSING AND TURNING
THATS WHY I AM CRYING
FUNNY HOW LOVE CAN BE



THE IVY LEAGUE

The SAND GROUNDERS WITH MARTY HAWKINS

Three Ways To Buy Your Tickets

£12.00

Available

At The Club

After 7:30

Box Office

No Booking Fee

All Major Cards

Accepted

ALSO AT

WALMAYNE

MOTORS

32A LINAKER ST,

SOUTHPORT

bigalpromo.ticketsource.co.uk



FIND US & LIKE US AT [FACEBOOK.COM/THECHANCEDANCES](https://www.facebook.com/thechancedances)



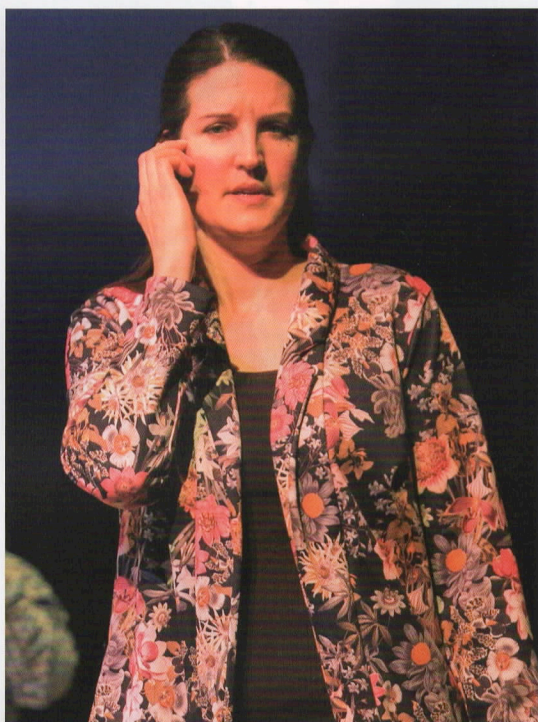
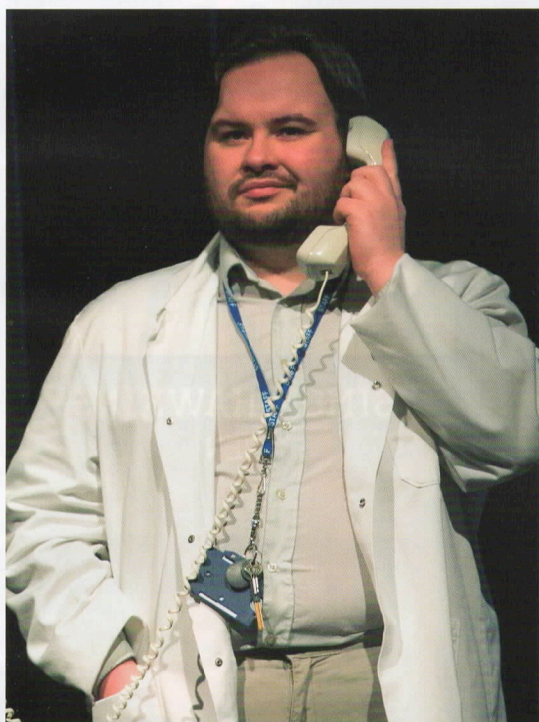
SYNOPSIS OF SCENES

The action in this play takes place over approximately one year, starting in spring.

Act 1 and **Act 2** are performed on a composite set, representing various times and locations which become evident as the script progresses, opening in the home of Henry and Angela.

There will be a twenty minute interval between Act 1 and Act 2.

It is recommended that interval drinks be ordered prior to the performance in order to '*beat the rush*'.



The Little Theatre - Home of the Southport Dramatic Club.

The SDC wishes to ensure that all our patrons enjoy a comfortable, enjoyable and safe visit to our theatre. We should be grateful for your co-operation in helping us to achieve this. Please note the following:

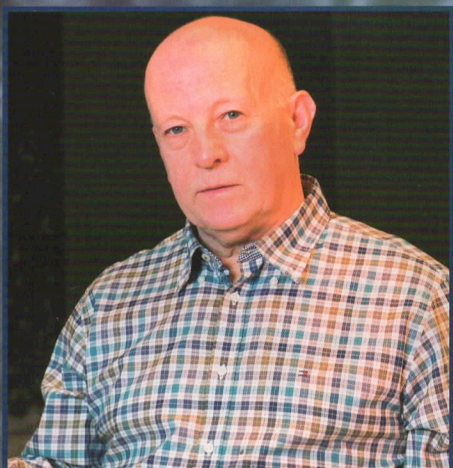
- Should you arrive after the performance has started, you will be guided to your seats when a suitable opportunity occurs.
- At the end of the performance, exits will be open at both the front and back of the auditorium.
- First Aid assistance is regularly provided by volunteers from the St. John Ambulance Brigade. Should you require help, please advise our stewards on duty in the Foyer.
- Patrons with hearing impairments should note that the auditorium has an Induction Loop System for your assistance.
- Please ensure that all mobile phones and electronic devices are switched off during the performance.
- Photography and video recording are not allowed during the performance.

Designated Premises Supervisor, Alan Newport



DISPOSING OF

THE



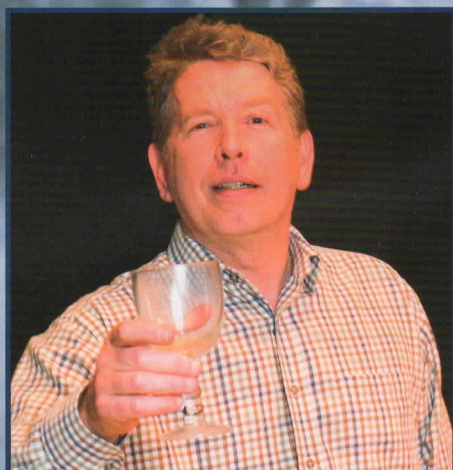
TED BULLEN
HENRY



SIMON HAWKINS
BEN



KATHY FELTON-AKSOY
ANGELA



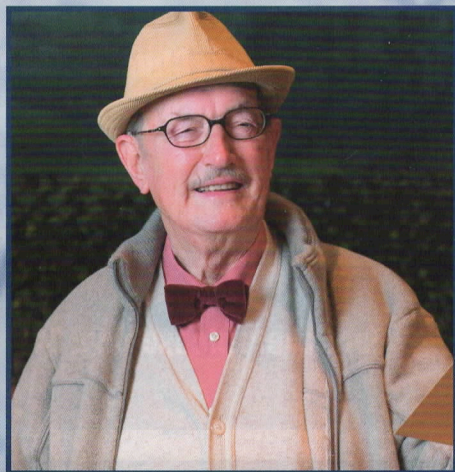
BRENDAN GILLOW
ALEXANDER

OF THE BODY

CAST



SARAH VIALI
JOANNA



DAVID DAVIES
INSPECTOR POOL



ANGELA MCINTYRE
KATE



PETER SLATER
BASSET

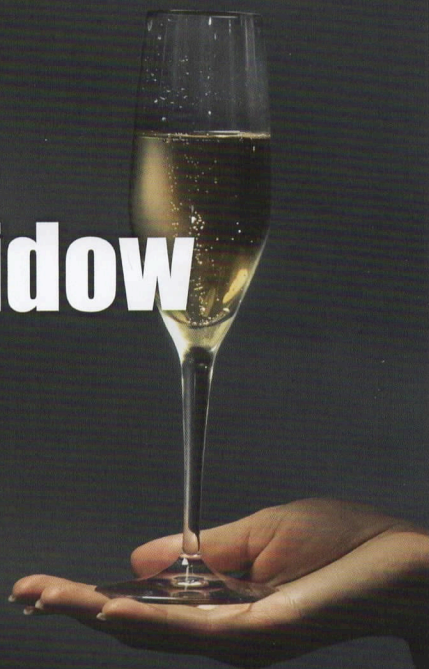
Opera Viva
Present

Franz Lehár's
The Merry Widow

At Holy Trinity Church, Southport
Friday 17th April 2015, 7.30pm

Also
At St. Mary's College, Crosby
Saturday 25th April 2015, 7.30pm

For tickets please ring: 0151 920 2093



**We're In The
Disposal Business!**



THE LIONS SHOP

Furniture and furnishings, ornaments and bric-a-brac. No Problem!
You can dispose of your surplus items to the Lions Shop, and the money we raise from selling them will go to support the charitable work of Southport Lions Club, which has been helping local people since 1962. All this means that we have a great stock of wonderful items which kind people have given us. We're certain to have something you'll love to buy! Come and visit us, soon. You'll be very welcome.

THE LIONS SHOP

664 LIVERPOOL ROAD, AINSDALE, SOUTHPORT, PR8 3LT

☎ 01704 577446 🌐 WWW.THELIONSSHOP.INFO

STAGING

Stage Manager	Chris Ratcliffe
Assistant Stage Manager	Ste Taylor
Prompt (ASM Book)	Helene Porter
Properties	Lynn Gosling, Muriel Leefe and Jack Taylor
Wardrobe	Cast
Lighting	Alan Gosling & Team LX
Sound	Brian Hodge
Scenic Artist	Bob Jessamine
Set Design	Celia Timmington
Set Construction	The SDC Construction Team
Photographs	Fletcherhill Photography
Programme Editor	Jacquie Bolshaw
Programme Content & Research	Henry James
Press Promotion	Ron Ellis & Ellen Campbell
Programme Layout and Design	Mitchell & Wright (Printers) Ltd

MUSIC IN THIS PRODUCTION

The theme music for this evening's production is *Waltz* from *suite No. 1 for Variety Orchestra* by Shostakovich, whose music is heard before the play and during the interval. Act 1 ends with a brief extract from the overture *Francesca da Rimini* by Tchaikovsky. We also hear: in the car, *Chelsea Bridge* played by Ben Webster; Dave Brubeck in the hotel and, in the restaurant, *Wada Na Tod* (Bollywood).

ACKNOWLEDGEMENTS

The Director would like to thank: Dobbies Garden Centre for the provision of the hedge.



YOUR LOCAL FRIENDLY SOLICITORS

**Maxwell
Hodge**
SOLICITORS

Provide a fast and efficient service for

- Wills
- Probate
- Court of Protection
- Conveyancing
- Powers of Attorney



michaelyates@maxweb.co.uk
01704 872156

Appointments at our local office and home visits can be arranged please call Michael Yates.

www.maxwellhodge.co.uk

Aintree
0151 526 9321

Kirkby
0151 548 7370

Formby
01704 872 156

Maghull
0151 526 7131

Heswall
0151 342 6447

West Kirby
0151 625 9154

Huyton
0151 489 6161

Liverpool (city)
0151 227 4545

We've got just the thing to make you feel better.



Why not look after someone's dog while they're away.

Become a host with Barking Mad

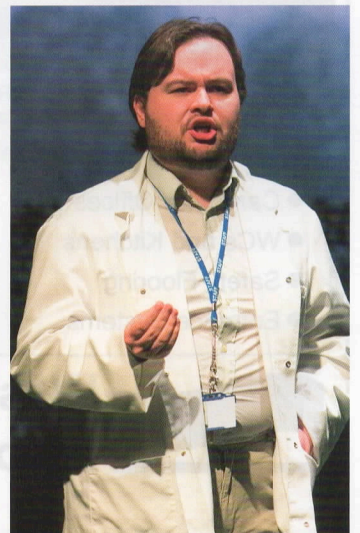
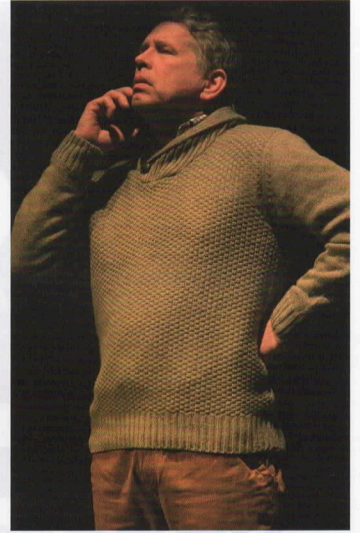
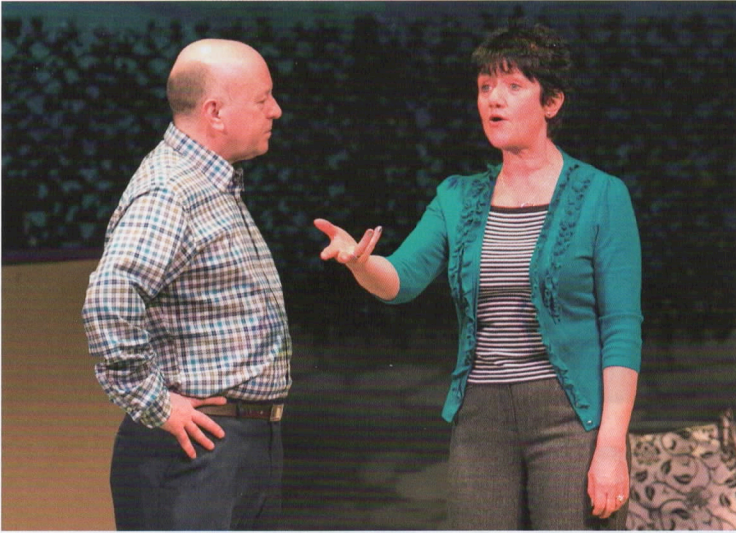
It's great fun, all of the benefits of dog ownership without the emotional or financial commitment. We carefully match dogs to your home.



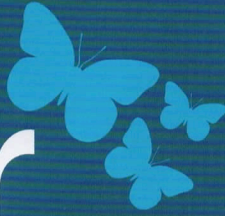
The alternative to kennels

Nicola Sheard
01772 434708

nicola.sheard@barkingmad.uk.com
BarkingMad.uk.com



nwcr



NORTH WEST CANCER RESEARCH

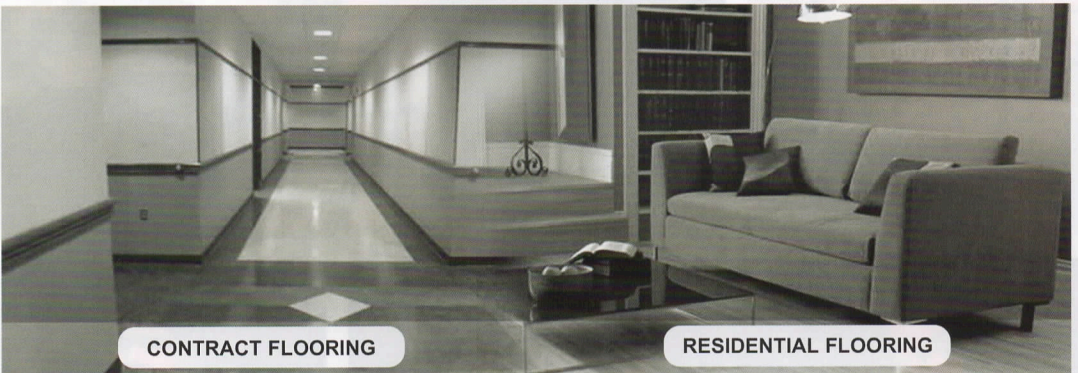
Incorporating Clatterbridge Cancer Research

Help us to understand Cancer...

Funding cancer research for over 60 years.

NWCR 22 Oxford Street, Liverpool L7 7BL | T: 0151 709 2919 | F: 0151 708 7997

Donate today at: www.nwcr.org



CONTRACT FLOORING

RESIDENTIAL FLOORING

Specialists in all Business Applications

- Carpet for Offices
- Vinyl and Linoleum
- WCs and Kitchens
- Wet areas
- Safety Flooring
- Sports Surfaces
- Entrance Systems
- Hardwood Flooring

Amisco



 **Tarkett**



**West Lancashire
Flooring Limited**

74 Ormskirk Business Park, New Court Way,
Ormskirk, Lancashire L39 2YT
T: 01695 578369 F: 01695 570623
admin@wlflooring.co.uk
www.wlflooring.co.uk



**Trudi Hirsch &
Hilary Thomson**
Directors

NOW IN REHEARSAL
SDC Youth Theatre Production

Anne of Green Gables

by Sylvia Ashby
from the novel by L. M.
Montgomery

Southport Dramatic Club's Youth Theatre are busy working on their next production of "*Anne of Green Gables*", which will run nightly at 7.30 pm from Tuesday 17th to Saturday 21st March 2015. Based on the novel by L. M. Montgomery, this adaptation by Sylvia Ashby tells the classic story set in Avonlea in 1904.

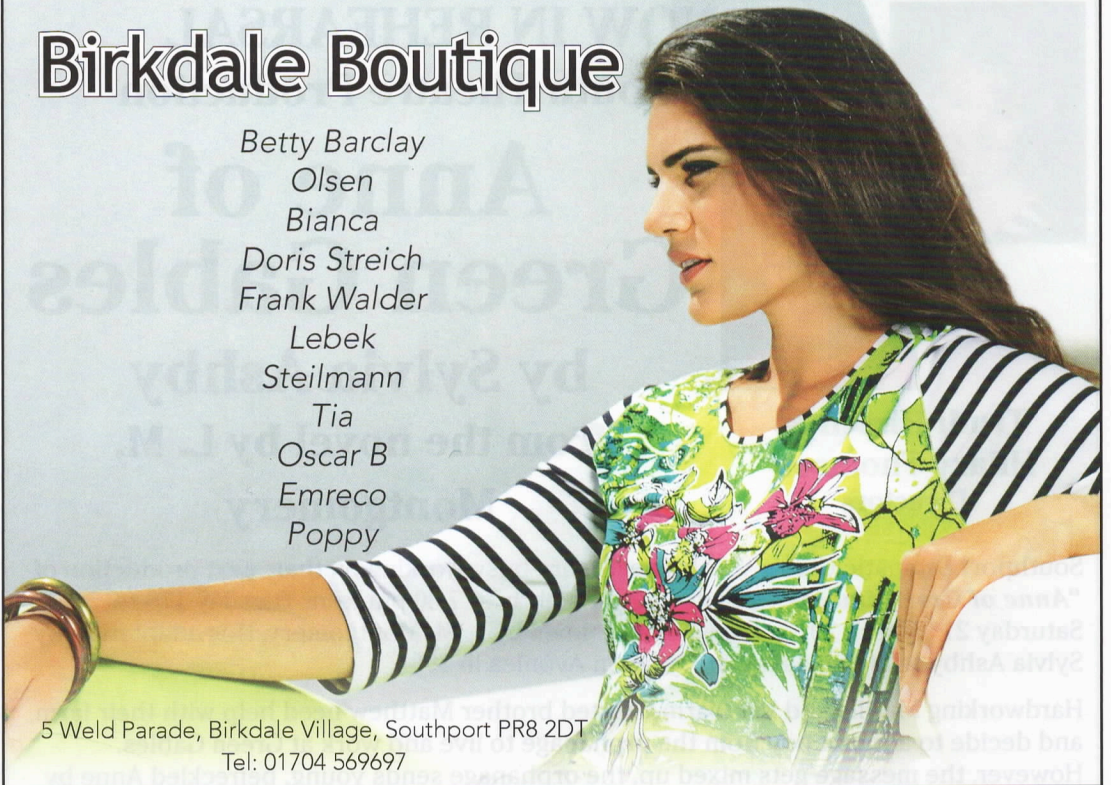
Hardworking Marilla and her warm-hearted brother Matthew need help with their farm, and decide to adopt a boy from the orphanage to live and work at Green Gables. However, the message gets mixed up, the orphanage sends young, befreckled Anne by mistake, and none of their lives will ever be the same! Anne's warmth, wit, and imagination affects everyone around her, both at school and at home.

Directors Trudi Hirsch and Hilary Thomson, along with the 14 Cast Members invite you to come and watch this charming tale for all the family. We look forward to seeing you in March and thank you for your continued support of our flourishing Youth Theatre.



Birkdale Boutique

Betty Barclay
Olsen
Bianca
Doris Streich
Frank Walder
Lebek
Steilmann
Tia
Oscar B
Emreco
Poppy



5 Weld Parade, Birkdale Village, Southport PR8 2DT
Tel: 01704 569697

Car Parking - A Special Offer!

We are delighted to announce a new arrangement with the N.C.P. car park in London Street (only a few minutes away – opposite the Albert Hotel)

The N.C.P. car park usually charges at an hourly rate. However, if you present your 'car parking' ticket at the Little Theatre Box Office, Bar or Foyer Served you will be given a 'follow-on' ticket. When you return to the N.C.P. car park to pay before driving away you then insert firstly the 'car parking' ticket followed by your 'follow-on' ticket and the charge will be reduced to **£1.00**.

We hope you will find the new service useful, but please remember to collect your 'follow-on' ticket from the Theatre before leaving to obtain this valuable reduction.

This service is operated by N.C.P. for our patrons and not by the S.D.C.



COMING
to the Little Theatre
Home of the Southport Dramatic Club

* It is now possible for you to book any SDC production
in the current season whenever the box office is open

The Too Friendly
Theatre Company

Box Office Opens:
26th February 2015 at 11.00am

5th - 7th March 2015
Snake in the Grass

By Alan Ayckbourn

By arrangement with Samuel French Inc.
Advanced bookings on: 01704 808951

**SDC Youth
Production**



Box Office Opens:
9th March 2015 at 11.00am

17th - 21st March 2015

Anne of Green Gables

By Sylvia Ashby

from the novel by L. M. Montgomery
directed by Trudi Hirsch and Hilary Thomson

**SDC
Production**



Box Office Opens:
3rd April 2015 at 11.00am

10th - 18th April 2015

Yes, Prime Minister

An award winning political comedy

By Antony Jay & Jonathan Lynn

Directed by Robin Hirsch

**SDC
Production**



Box Office Opens:
1st May 2015 at 11.00am

8th - 16th May 2015

Glorious

A Heart-Warming Finale

By Peter Quilter

Directed by Stephen Hughes-Alty

BOS Musical
Theatre Company

Box Office Opens:
16th May 2015 at 11.00am

23rd - 30th May 2015

Hairspray
The Broadway Musical

Book by Marc O'Donnell, Thomas Meehan

Music by Marc Shaiman, Lyrics by Scott Wittman, Marc Shaiman

Advanced booking on: 01704 564042



No booking charges
or card fees



like us on
facebook

Box Office Tel: (01704) 530521/530460
www.littletheatresouthport.co.uk Houghton Street, Southport PR9 0PA

Southport Dramatic Club

An SDC Youth Theatre Production

Anne of Green Gables

by Sylvia Ashby
from the novel by
L. M. Montgomery

Directed by
Trudi Hirsch and Hilary Thomson

17th - 21st
March 2015
at 7.30pm



LITTLE THEATRE
Home of the
Southport Dramatic Club

Tickets:
Front Stalls £10
Rear Stalls £8.50

Presented by special arrangement
with Samuel French Ltd

NO BOOKING CHARGES
OR CARD FEES



Box Office Opens: 9th March 2015 at 11.00am
Box Office Tel: (01704) 530521 / 530460
www.littletheatresouthport.co.uk Hoghton Street, Southport PR9 0PA



Like us on
facebook