

# Southport Dramatic Club

SDC'S FAMILY FRIENDLY PANTOMIME

# ALADDIN

BY STEPHEN HUGHES-ALTY

DIRECTED BY JAMES HUGHES-ALTY

18TH DECEMBER 2013  
- 5TH JANUARY 2014



CHOREOGRAPHY  
BY CORINNA DAVIES

MUSICAL DIRECTION  
BY SARAH NICHOLSON



**LITTLE THEATRE**  
Home of the  
Southport Dramatic Club

Box Office Tel: (01704) 530521/530460

[www.littletheatresouthport.co.uk](http://www.littletheatresouthport.co.uk)

Hoghton Street, Southport PR9 0PA



No Booking Charges  
or card fees

Party bookings now  
on 01704 504800

Concessions for groups,  
children & senior citizens



Find us on  
facebook

the  
**Office**  
BAR & RESTAURANT

## Pre Theatre Dinner

# 10% off your final bill

when theatre ticket is shown

**we are opposite the  
Little Theatre on Hoghton Street**

bar menu served Tues - Sun / 11.00 - 4.00  
with restaurant serving lunchtime 2 course menu  
from £10 / 12.00 - 2.30 Tues - Sat.

Tuesday £10 menu served all evening  
& house wine £10 per bottle.

TDH & A la carte also available.

Wed - Sat from 5.30pm £10 menu available  
on orders before 6.30pm.

TDH & A la cart also available.

Sunday @ The Office 12.00 - 6.30

two courses £10 menu,  
house wine £10 per bottle.

Sunday menu includes roast of the day.

10% discount cannot be used  
when dining on the £10.00 menu.

For Bookings Telephone: 543354  
9b Hoghton Street, Southport. PR9 0TE



# DIRECTOR'S NOTES

Hello and welcome to the SDC's family friendly pantomime *Aladdin*.

Panto is a wonderful Christmas tradition enjoyed by family audiences for generations, in fact it often brings several generations of families together with grandparents, parents and children visiting the theatre to enjoy the songs, dances and silly jokes.

As a cast and crew, it can mean long hours away from our families as we rehearse and perform for about five months, but luckily we get to spend that time with our other family, our friends here at the Little Theatre, and that includes you, our audience!

This year we present the magical tale of Aladdin as he battles the evil Abanazer for the power that resides in the magic lamp. Abanazer plans



**James Hughes-Alty**  
*Director*

to use the power to rule the world, but Aladdin wants only to win the hand of his one true love, the beautiful Princess Jasmine. Aladdin's mum, Widow Twankey, and his brother Wishee Washee, are there to help and although sometimes they are more of a hindrance, they are always ready with a joke or two!

With a host of colourful, magical (and in one case

incredibly cute!) characters, memorable songs expertly arranged by our M.D. Sarah and exciting dance routines from our choreographer, Corinna, there is sure to be something to keep the entire family glued to their seats.

None of this would be possible without all the hard work from the people you won't see on the stage, so many thanks to all the people who painted and built the set, rigged and operated the lights, provided all the props, and especially to Kate and Sherel and their team who provided all the costumes.

We all hope you have a wonderful time with Aladdin and his friends.

Merry Xmas and a Happy New Year

*James Hughes-Alty*  
*Director*



**Sarah Nicholson**  
*Musical Director*



**Corinna Davies**  
*Choreographer*

**We've got just  
the thing  
to make you  
feel better.**



Why not look after  
someone's dog  
while they're away.

**Become a host with  
Barking Mad**

It's great fun, all of the benefits of dog  
ownership without the emotional or  
financial commitment. We carefully  
match dogs to your home.



The alternative to kennels

**Nicola Sheard  
01772 434708**

[nicola.sheard@barkingmad.uk.com](mailto:nicola.sheard@barkingmad.uk.com)  
[BarkingMad.uk.com](http://BarkingMad.uk.com)



## **Birkdale Boutique**

*Betty Barclay  
Olsen  
Bianca  
Doris Streich  
Gollehaug  
Lebek  
Steilmann  
Tia  
Oscar B  
Emreco  
Signature*

5 Weld Parade, Birkdale Village, Southport PR8 2DT  
Tel: 01704 569697

# STEPHEN HUGHES-ALTY

This year Southport Dramatic Club is presenting *Aladdin* and the writer of the new production is promising something for all the family.

The last time a Stephen Hughes-Alty pantomime was performed at The Little Theatre was two years ago and his version of *Cinderella* was successful.

This is the first time Stephen's *Aladdin* has been performed. Stephen explained what audiences can expect: "There is lots of slapstick for the children and some very silly jokes. I love silly jokes! But the story and adventure will keep older children interested. There may be the odd line aimed at the grown-ups but it's mainly a festive feast of family fun!

I'm a firm believer that the story should be the star of the show. That is why I don't like many professional pantomimes these days as they shoehorn jokes in about whichever minor celebrity happens to be playing the part this year. So, for our home-grown SDC panto, the audience can expect a strong plot, lots of comedy and great songs and dances.

In my repertoire I have four other pantomimes: *Cinderella*, *Beauty and the Beast*, *Mother Goose* and



Stephen Hughes-Alty  
Author

*Sleeping Beauty*. I have also written a musical entitled *The Hotspot* and several Christmas shows which annually tour around the Northwest."

So what inspired Stephen to write *Aladdin*? He answered: "The story and the setting. I love *Aladdin*. It is full of magic and mystery. The story of the brave young lad who wins the hand of the fair Princess Jasmine is timeless."

Stephen writes the pantomime as he goes along, so he can play to each individual performer's strengths. He added: "We started rehearsing in October when the first scene was drafted. The final scene was finished last November. In actual man-hours it probably took about a week."

Stephen, who is currently Vice Chairman of the SDC,

has been a member of the club for about 20 years. He said: "I am very honoured to be Vice Chairman. I have been involved with many areas of the club. I've done front of house, props, costumes, sold programmes, acted, directed, and organised social events. I am perhaps best known for my work with our wonderful Youth Theatre."

The writer's first acting role was Oliver in *Oliver* when he was 11, Stephen commented: "I loved it...and still do." He studied a degree in Drama and Theatre Studies, and then was a professional actor and director for four years. He became a drama teacher before becoming a consultant, and he now has his own company which trains teachers to teach exciting performing arts lessons. Stephen said: "I love my job and love engendering a passion for theatre in others.

I am also the author of a text book on drama skills. I am usually out rehearsing six nights out of seven for various productions. I am currently acting in two productions and directing three others. I love being busy."



## **Do you live in an apartment?**

*If so, are you concerned with the way your management company is managing your apartment?*

We will provide a personal, professional and local service to all our clients and offer an initial free consultation to discuss our services in more detail.

If you would like any more information or want to find out how we can help you, call us on the number below; but remember, you are speaking to a real person in a local office, who works for us, just like in the old days !!!!!

If you wish to make an appointment for a FREE consultation call us today on

# **01704 535029**

**Westbridge Facilities Management  
11 Houghton Street  
Southport  
PR9 0NS**

**[www.westbridgemanagement.com](http://www.westbridgemanagement.com)**

# THE ORIGINS OF ALADDIN

The story of *Aladdin* is well known throughout the world, but people do not know as much about its origins.

Aladdin is included in the book *Arabian Nights*, or the *One Thousand and One Nights* which is a collection of stories, many of which are thought to have originally been told by Scheherazade.

It is said that she was a concubine of the Persian Sultan who had the habit of killing women once he had finished with them. Scheherazade came up with a plan to save her life, which was to tell a story to the Sultan, and to keep it going night after night. Once she

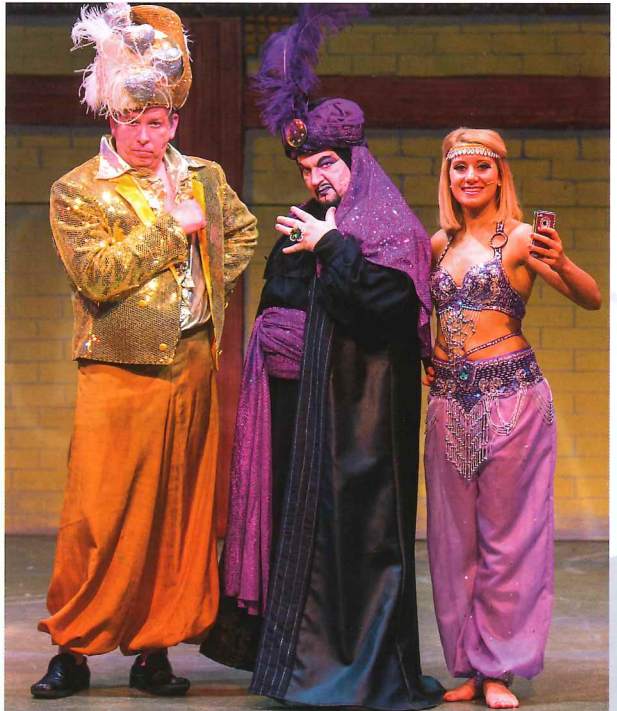
had finished one, she would start another and after 1,001 nights Scheherazade told the Sultan she had no more stories to tell him. However by then he had fallen in love with her and she was made queen.

*One Thousand and One Nights* also includes *Ali Baba and the Forty Thieves* and *The Seven Voyages of Sinbad the Sailor*.

*Aladdin* did not appear in the original manuscripts. It is believed to have been added by the French translator, Antoine Galland, after it had been passed on to him by a Syrian storyteller. He is thought to have made his

translation of *Aladdin* in the winter of 1709-10. Since being added by Galland, it is now considered one of the most famous tales in *One Thousand and One Nights*.

The setting for the original story of *Aladdin* was not the Middle East, but China. In this version Aladdin is a poor young boy living on the streets. Many of the characters are Muslims and have Arabic names. Some people believe the original story could have been set in Turkestan (an area including Central Asia and the Chinese province of Xinjiang).



BALLET  
MODERN



JAZZ

Principals: Miss Bamber & Mrs. P. Morris  
(AISTD, MB, NB, TB, BB) Registered RAD

# *Loreto Bamber* **Dancing Academy**

Do you want to learn to dance?

Courses available for everyone

All ages welcome from 2 1/2 years

All standards catered for from beginner to advanced level.

Fun tap and jazz for adults.

**Studio at:**

**New Temple, Castle Street,**

**Southport**

**and St. Johns, Ainsdale**

**Telephone: 01704 538351**



# SYNOPSIS OF SCENES

## ACT ONE

- Scene 1: Prologue
- Scene 2: The Market Place in Old Peking
- Scene 3: The Street of a Thousand Chopsticks
- Scene 4: Twanky's Laundry
- Scené 5: A Path in the Mountains
- Scene 6: Inside the Cave of Jewels

## ACT TWO

- Scene 1: The Park of the Pink Pagoda
- Scene 2: The Street of a Thousand Chopsticks
- Scene 3: The Great Pyramid
- Scene 4: Back in Peking – The Song Sheet
- Scene 5: The Imperial Palace – Finale



### The Little Theatre - Home of the Southport Dramatic Club.

The SDC wishes to ensure that all our patrons enjoy a comfortable, enjoyable and safe visit to our theatre. We should be grateful for your co-operation in helping us to achieve this. Please note the following:

- Should you arrive after the performance has started, you will be guided to your seats when a suitable opportunity occurs.
- At the end of the performance, exits will be open at both the front and back of the auditorium.
- First Aid assistance is regularly provided by volunteers from the St. John Ambulance Brigade. Should you require help, please advise our stewards on duty in the Foyer.
- Patrons with hearing impairments should note that the auditorium has an Induction Loop System for your assistance.
- Please ensure that all mobile phones and electronic devices are switched off during the performance.
- Photography and video recording are not allowed during the performance.

Designated Premises Supervisor, Alan Newport





# ALADDIN

## CAST

Aladdin .....John Delahunty  
 Princess Jasmine .....Rokiah Khan  
 Widow Twanky .....Rob MacGregor  
 Wishee Washee .....Peter Forshaw  
 Abanazer .....Stephen Hughes-Alty  
 Spirit of the Ringtone .....Emily Meadow  
 Genie of the Lamp .....Brendan Gillow  
 Emperor Kung Fu .....Barry Johnson  
 Empress Dragonara .....Celia Timmington  
 Chop Suey .....Georgina Gillen  
 Ping .....Robbie Fletcher-Hill  
 Pong .....Zack Johnson  
 Sing Hi .....Fern Ward  
 Sing Lo .....Zoe Findlay



# ODIN

## CITIZENS OF PEKING

Laura-Jane Palmer, Jamie Lonsdale, Amy Stout,  
Eleanor Gillow, Bethany Griffin, Hayley Griffin,  
Alex Molton, Emma Dinsdale, Megan Ryan, Eleanor  
Morris, Sophie Jones & Georgia Daley.



# YOUR LOCAL FRIENDLY SOLICITORS

**Maxwell  
Hodge**  
SOLICITORS

Provide a fast and efficient service for

- Wills
- Probate
- Court of Protection
- Conveyancing
- Powers of Attorney



michaelyates@maxweb.co.uk  
01704 872156

Appointments at our local office and home visits can be arranged please call Michael Yates.

[www.maxwellhodge.co.uk](http://www.maxwellhodge.co.uk)

**Aintree**  
0151 526 9321

**Kirkby**  
0151 548 7370

**Formby**  
01704 872 156

**Maghull**  
0151 526 7131

**Heswall**  
0151 342 6447

**West Kirby**  
0151 625 9154

**Huyton**  
0151 489 6161  
**Liverpool (city)**  
0151 227 4545

## a great little place

*great coffee, great art... for a great reason.*

*Southport Food and Drink  
Festival Winner 2011*

43 London Street  
Southport, PR9 0TH  
T. 01704 532 066



11C Houghton Street  
Southport, PR9 0NS  
T. 01704 533 290

[enquiries@agreatlittleplace.org](mailto:enquiries@agreatlittleplace.org)

*outside catering service*

# STAGING

## PRODUCTION TEAM

Director .....	James Hughes-Alty
Musical Director .....	Sarah Nicholson
Choreographer .....	Corinna Davies

## CREW

Stage Manager .....	Lindsay Haywood
Deputy Stage Manager .....	Ceri Powell
Prompt/Rehearsal Matron .....	Sue Palmer
Properites .....	Muriel Leefe, Hannah Barton & Geoffrey Timmington
Scenic Artist .....	Bob Jessamine
Wardrobe .....	Kate Hargreaves, Ceri Watkins & James Hughes-Alty
Lighting Design .....	Team LX
Sound Design .....	Bernie Howat
Backstage & Technical Crew .....	Peter Bamford, Christian Barisio, Mark Haworth, Michèle Martin, Alex McKillop, Ed McKillop, Alan Morris, Jeremy Myers, David Proffitt, Chris Ratcliffe, Lewis Scutt, Mike Yates, Jennie Hale & others
Set Construction & Design .....	SDC Construction Team
Photographs .....	Fletcherhill Photography
Programme Editor .....	Jacquie Bolshaw
Programme Sub Editor .....	Barry King
Programme Content & Research .....	Henry James
Programme Layout and Design .....	Mitchell & Wright (Printers) Ltd

## BAND

Bass Guitar .....	Adam Molyneux
Keyboard .....	Matt Abrams
Drums .....	Mike McKay

## MUSIC IN THIS PRODUCTION

### ACT 1

Life's a happy song .....	Wishee and Chorus
Positovity .....	Wishee, Twanky and Chorus
For once in my life .....	Aladdin and Chorus
I want to be like other girls .....	Jasmine, Sing Hi and Sing Lo
Who needs to dream .....	Aladdin and Jasmine
You can go but be back soon .....	Aladdin, Twanky, Wishee, Abanazer and Chorus
Could it be magic .....	Aladdin, Genie, Samsung and Chorus

### ACT 2

I just want you to dance with me tonight .....	Jasmine, Sing Hi, Sing Lo and Chorus
On the sunny side of the street .....	Aladdin, Twanky and Wishee
A whole new world .....	Aladdin and Jasmine
I want the good times back .....	Abanazer and Chorus
Ain't no mountain high enough .....	Aladdin, Jasmine and the Company

**We already have a  
Jeannie in our Shop...**



**THE LIONS SHOP**

...and a Val and a Joan, and many other volunteers!

Not only that, but The Lions Shop on Liverpool Road in Ainsdale contains a treasure-trove of furniture, clothing, ornaments, bric-a-brac, and books.

If you're quick you may even find the odd lamp or two.

And you will know that every penny we make goes towards the charitable activities of Southport Lions Club, which has been working its magic for fifty years!

Come and say 'hello,' look around and browse, and tell us if you have seen this Ad!

**THE LIONS SHOP**

**664 LIVERPOOL ROAD, AINSDALE, SOUTHPORT, PR8 3LT**



**01704 577446**



**WWW.THELIONSSHOP.INFO**

**nwcr**



**NORTH WEST CANCER RESEARCH**

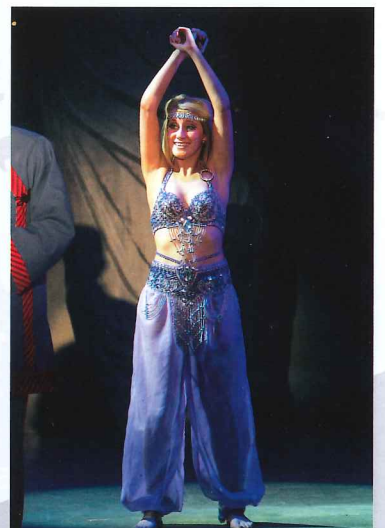
*Incorporating Clatterbridge Cancer Research*

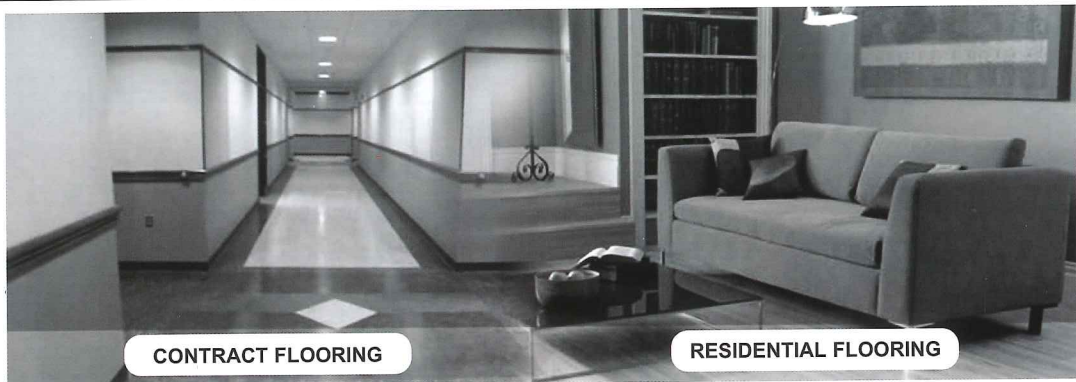
**Help us to  
understand Cancer...**

**Funding cancer research for over 60 years.**

**NWCR 22 Oxford Street, Liverpool L7 7BL | T: 0151 709 2919 | F: 0151 708 7997**

**Donate today at: [www.nwcr.org](http://www.nwcr.org)**





**CONTRACT FLOORING**

**RESIDENTIAL FLOORING**

**Specialists in all Business Applications**

- Carpet for Offices
- WCs and Kitchens
- Safety Flooring
- Entrance Systems
- Vinyl and Linoleum
- Wet areas
- Sports Surfaces
- Hardwood Flooring



**West Lancashire  
Flooring Limited**

74 Ormskirk Business Park, New Court Way,  
Ormskirk, Lancashire L39 2YT  
T: 01695 578369 F: 01695 570623  
admin@wlflooring.co.uk  
www.wlflooring.co.uk

**PRINT QUALITY THAT STANDS OUT**

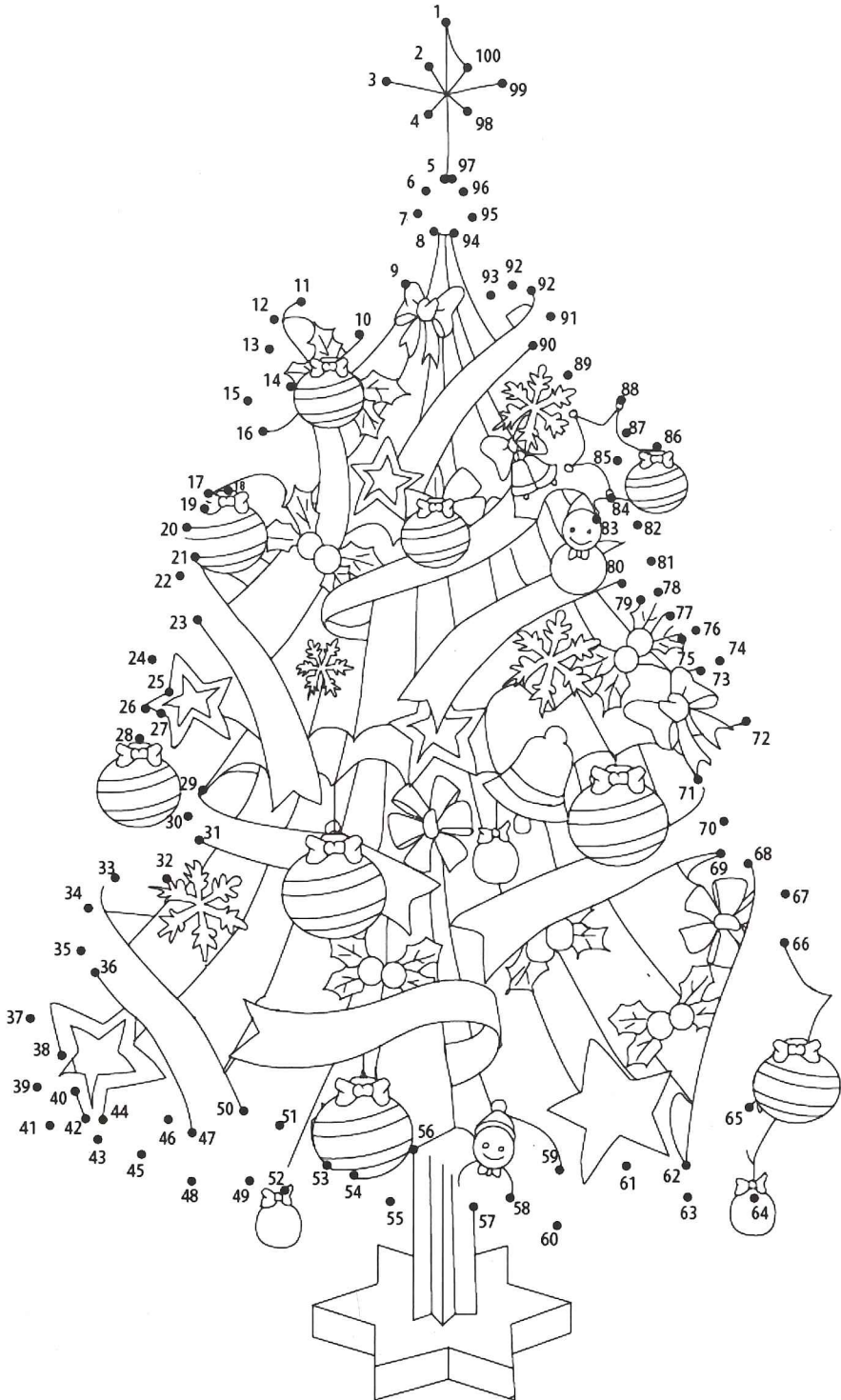


**mitchell & wright  
printers ltd**

Tel: 01704 535529 - Email: sales@mitchellwright.co.uk



# CAN YOU JOIN THE DOTS?





**Adrian Roberts**  
*Director*

## NOW IN REHEARSAL

# Murdered to Death

by Peter Gordon

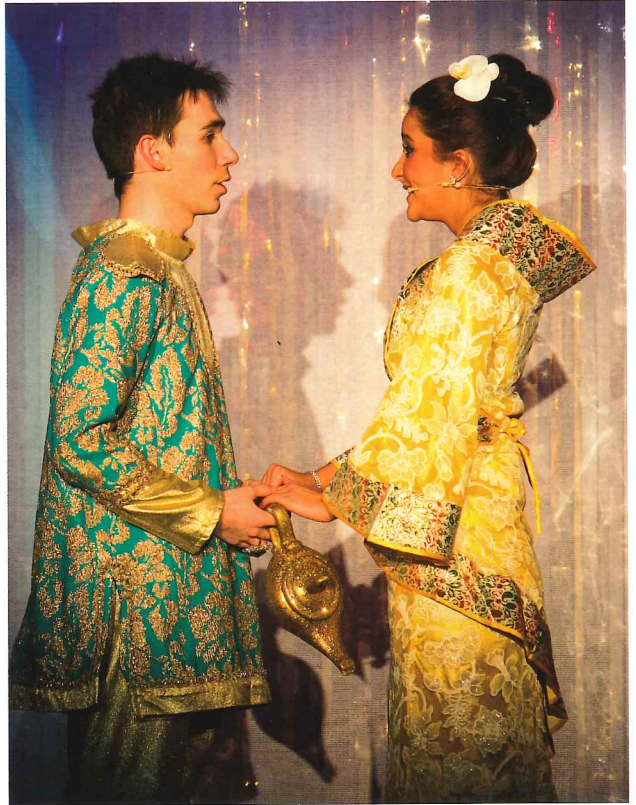
I'm delighted to be directing my first play for the SDC. It is strange, but exciting, to be this side of the curtain for a change, it will be funny sitting in the audience each night and watching the play unfold in front of me. I am very lucky to be making my directing debut with such a talented and fun cast.

I saw Peter Gordon's 'Murdered to Death' three years ago and laughed so much that when I was offered the chance to direct it myself, I leapt at it!!

This hilarious spoof of the best of Agatha Christie traditions is set in a country manor house in the 1930s, with an assembled cast of characters guaranteed to delight. Bunting the butler, an English Colonel with the prerequisite stiff upper lip, a French art dealer, the bumbling police inspector and a well-meaning local sleuth who seems to attract murder wherever they go. They are all caught up in the mysterious murderous antics which follow. It soon becomes clear that the murderer hasn't finished yet. But, will the murderer be unmasked before everyone else has met their doom?

Please come and join us in the lounge of our manor house were peoples' past secrets are waiting to be revealed.

*Adrian Roberts, Director*



# COMING to the Little Theatre Home of the Southport Dramatic Club

SDC  
Production



Box Office Opens:  
17th Jan 2014 at 11.00am

24th January – 1st February 2014

## Murdered to Death

A Gripping Spoof 'Whodunnit'

By Peter Gordon

Directed by Adrian Roberts

This amateur production is presented by arrangement with Josef Weinberger

Queenscourt Hospice &  
Maghull Wind Orchestra

8th February 2014

7.45 p.m.

## An Evening with Maghull Wind Orchestra

Box Office Opens: 8th February 2014  
at 6.00pm

Advance Bookings on: 0151 531 9562  
or 01704 560607

SDC  
Production



Box Office Opens:  
14th Feb 2014 at 11.00am

21st February – 1st March 2014

## Lettice and Lovage

A Tony Award-Winning Comedy

By Peter Shaffer

Directed by Michèle Martin

The Too  
Friendly Theatre Company

6th - 8th March 2014

## The Reunion

By Peter Gordon

This amateur production is presented by arrangement with Josef Weinberger

Box Office Opens:  
27th February 2014

Advance Bookings:  
01704 541306

SDC Youth Theatre  
Production



Box Office Opens:  
10th Mar 2014 at 11.00am

18th – 22nd March 2014

## The Railway Children

By E. Nesbit

Adapted by David Simpson

Directed by Marilyn Fletcher-Hill

Production by arrangement with Samuel French

SDC  
Production



Box Office Opens:  
28th Mar 2014 at 11.00am

4th April – 12th April 2014

## The Odd Couple (Female Version)

By Neil Simon

A Hilarious Comedy

Directed by Ray Mann

Production by arrangement with Samuel French



Box Office Tel: (01704) 530521/530460  
[www.littletheatresouthport.co.uk](http://www.littletheatresouthport.co.uk)  
Hoghton Street, Southport PR9 0PA

No booking charges  
or card fees



like us on  
facebook

# Southport Dramatic Club

# Murdered to Death

A Gripping Spoof 'Whodunnit'  
by Peter Gordon

Directed by Adrian Roberts

24th January -  
1st February 2014

7.45pm



## LITTLE THEATRE

Home of the  
Southport Dramatic Club

Box Office Opens: 17th January 2014 at 11.00am

Box Office Tel: (01704) 530521/530460

[www.littletheatresouthport.co.uk](http://www.littletheatresouthport.co.uk) Houghton Street, Southport PR9 0PA

This amateur  
production is presented  
by arrangement with  
Josef Weinberger Limited

No Booking Charges  
or card fees



Find us on  
facebook