

# Southport Dramatic Club

A Poignant Comic Drama

# The Lady in the Van

A Remarkable Story by Alan Bennett

Directed by  
Robin Hirsch and  
Steve Pritchard

20th - 28th  
September 2013  
7.45pm

No Booking Charges  
or card fees

  
**LITTLE THEATRE**  
Home of the  
Southport Dramatic Club

Box Office Tel: (01704) 530521/530460

[www.littletheatresouthport.co.uk](http://www.littletheatresouthport.co.uk) - Hoghton Street, Southport PR9 0PA



Find us on  
facebook





the  
**office**  
BAR & RESTAURANT

# Pre Theatre Dinner

# 10% off your final bill

when theatre ticket is shown

**we are opposite the  
Little Theatre on Hoghton Street**

bar menu served Tues - Sun / 11.00 - 4.00  
with restaurant serving lunchtime 2 course menu  
from £10 / 12.00 - 2.30 Tues - Sat.

Tuesday £10 menu served all evening  
& house wine £10 per bottle.  
TDH & A la carte also available.

Wed - Sat from 5.30pm £10 menu available  
on orders before 6.30pm.  
TDH & A la cart also available.

Sunday @ The Office 12.00 - 6.30  
two courses £10 menu,  
house wine £10 per bottle.  
Sunday menu includes roast of the day.

10% discount cannot be used  
when dining on the £10.00 menu.

For Bookings Telephone: 543354  
9b Hoghton Street, Southport. PR9 0TE

# Chairman's notes

Good Evening ladies and gentlemen and a very warm welcome to our Little Theatre, the home of the Southport Dramatic Club.

We have selected for you, our audience, we hope, a season of plays to think about, thrill and amuse and above all give each of you an evening of amateur theatre at its best.

To our subscribers a big 'thank you' for continuing to support us each month; we



**Sherel Coley**  
Chairman

do welcome and listen to your comments and views.

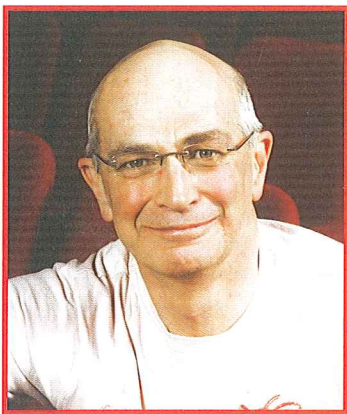
The Director, cast, backstage crews and front-of-house team would like you to sit back and enjoy your evening with us.

*Sherel Coley*  
Chairman

# Director's notes

Last season Robin Hirsch helped me enormously by taking over the direction of a play when I had to take a part in it. This season the situation is reversed with me completing Robin's direction of *The Lady in the Van*. We all wish her a speedy recovery and hope that we have realised her vision of this play. Thanks to all members of the cast for their much appreciated efforts and patience before, during, and after the 'hand-over'.

*The Lady in the Van* tells the true story of an eccentric lady who parked her van in Alan Bennett's garden for three



**Steve Pritchard**  
Director

physical Alan and the other, Alan the writer/narrator. The dialogue crackles with his trademark laconic wit which has confirmed his status as a 'national treasure'.

Special thanks to Adrian Roberts who, as Stage Manager, has lent his invaluable support and enthusiasm, not least in the acquisition of THE VAN!

Hoping that our combined efforts will launch another successful SDC season.

*Steve Pritchard*  
Director

months but stayed for fifteen years! Alan Bennett is played by two actors, one the







# Birkdale Orpheus Society

presents

An Amateur production by arrangement with The Really Useful Group Ltd.,

# WHISTLE *down the* WIND

Music by Andrew Lloyd Webber

Lyrics by Jim Steinman

With book by

Patricia Knop, Gale Edwards and Andrew Lloyd Webber.

Orchestrations by

David Cullen & Andrew Lloyd Webber.

## LITTLE THEATRE SOUTHPORT

Saturday 5th – Saturday 12th October 2013

Evenings start at 7.30pm.

Matinees Saturday 5th & 12th October starting at 2.00pm.

Advance Ticket Sales from 20th August: Tel: 01704 564042

Theatre Box Office opens

Saturday 28th September 2013, 11.00am – 2.30pm

Tel: 01704 530521



NODA National Operatic  
and Dramatic Association  
Registered Charity  
No: 701236

Visit our website:

[www.birkdaleorpheus.co.uk](http://www.birkdaleorpheus.co.uk)



# Alan Bennett

Alan Bennett was born on May 9, 1934 in Armley, Leeds. He was the son of Lilian and Walter, a Co-op butcher. He won a scholarship to Exeter College Oxford, to study history and graduated from the University with a first class degree.

Bennett first performed in cabaret whilst completing postgraduate research at Oxford. He joined together with Peter Cook, Dudley Moore and Jonathan Miller for the satirical revue, *Beyond the Fringe*, at the Edinburgh Festival in August, 1960. The show was performed in London and New York and critics said it changed British satire, often making it more like political comment.

After *Beyond the Fringe*, Bennett worked on a number of BBC sketch shows including *On the Margin* in 1966. John Gielgud appeared in his first West End stage play called *Forty Years On* in 1968. Alec Guinness starred in Bennett's plays *Habeas Corpus* (1973)



Alan Bennett

and *The Old Country* (1977). Bennett's *Talking Heads* monologues, which were filmed by the BBC in 1988 and 1998, proved to be popular. Thora Hird, Julie Walters, Maggie Smith, Stephanie Cole and Patricia Routledge starred in them. In these plays he looks at characters, who often have flaws, and he uses both humour and tragedy to tell their stories. They now appear on the A-level syllabus.

One of Bennett's most successful plays is *The Madness of George III* (1992). The show was adapted by the writer for the cinema (*The*

*Madness of King George* – 1994) and Nigel Hawthorne and Helen Mirren received Academy Award nominations for their performances. Bennett was also nominated for his writing on the film. Ken Adam and Carolyn Scott won an Oscar for the Best Art Direction.

His 2005 play *The History Boys*, which is about a group of pupils at a boys' grammar school in Sheffield preparing for the Oxford and Cambridge entrance exams, won numerous awards and starred the late Richard Griffiths. It had a long run at the National Theatre and was made into a film in 2006.

Bennett has also had autobiographical work published: *Writing Home* (1994) and *Untold Stories* (2005). In *Untold Stories*, Bennett writes about his family, including his mum's depression, and growing up in Leeds.

Bennett lives in Camden Town, London.

## Car Parking - A Special Offer!

We are delighted to announce a new arrangement with the N.C.P. car park in London Street (only a few minutes away – opposite the Albert Hotel)

The N.C.P. car park usually charges at an hourly rate. However, if you present your 'car parking' ticket at the Little Theatre Box Office, Bar or Foyer Servery you will be given a 'follow-on' ticket. When you return to the N.C.P. car park to pay before driving away you then insert firstly the 'car parking' ticket followed by your 'follow-on' ticket and the charge will be reduced to **£1.00**.

We hope you will find the new service useful, but please remember to collect your 'follow-on' ticket from the Theatre before leaving to obtain this valuable reduction.

*This service is operated by N.C.P. for our patrons and not by the S.D.C.*





Maghull Musical Theatre Company

presents

# CRAZY FOR YOU

THE NEW GERSHWIN MUSICAL

'I Got Rhythm'

'Someone to  
Watch Over Me'

'Slap That Bass'

'They Can't  
Take That Away  
From Me'



Co-Conception by  
Ken Ludwig  
and Mike Ockrent

Inspired by Material by  
Guy Bolton and  
John McGowan

Originally  
produced  
on Broadway  
by Roger Horchow  
and  
Elizabeth Williams

Music and Lyrics by George Gershwin and Ira Gershwin  
Book by Ken Ludwig

at the LITTLE THEATRE, Southport

**6th November to 9th November 2013**

Evenings 7.30pm. Saturday Matinee 2.15pm Tickets: £12 to £14

**Advance Bookings to Betty & Graham on 01695 632 372 until Tuesday 29th October**

**Then from Wednesday 30th October to Little Theatre Box Office (11am - 5pm)**

**Houghton Street, Southport PR9 0PA Telephone: 01704 530 521**

This amateur production by arrangement with Music Scope and Stage Musicals Ltd of New York

[www.maghullmtc.co.uk](http://www.maghullmtc.co.uk)



# The Lady in the Van

Alan Bennett met Miss Mary Shepherd, the lady in the van, after she had made her home in a street near his house in Camden Town. After parking restrictions were imposed, Bennett invited Miss Shepherd and her van into his garden in 1974. She was supposed only to stop for three months, but stayed fifteen years.

Bennett put together a story of his interactions with Miss Shepherd for the tenth anniversary of the *London Review of Books* in 1989. He used notes from his diary and Miss Shepherd's pamphlets. Bennett wrote: "Miss Shepherd's presence in the garden didn't, of course, stop me jotting things down, making notes on her activities

and chronicling her various comic encounters."

It was 1999 before the story became a stage play. *The Lady in the Van*, a comic drama, opened on November 19th, in London's West End at The Queen's Theatre with Dame Maggie Smith playing the role of Miss Shepherd.

Alan Bennett is performed by two actors in the play. Alan Bennett appears in the action, while Alan Bennett 2 makes comment on it. In the West End production Nicholas Farrell and Kevin McNally starred as Alan Bennett and Alan Bennett 2. The action takes place over a period of twenty years and Miss Shepherd is described as

being sixty-five years old. There are many comic moments, provided by the comments of Bennett and Mary Shepherd. The original play was directed by Nicholas Hytner, who directed the film versions of Bennett's plays, *The Madness of George III* and *The History Boys*.

In 2000 Maggie Smith was nominated for an Olivier Award for Best Actress for her portrayal of Mary Shepherd.

*The Lady in the Van* has also been adapted for the radio and was broadcast on BBC Radio 4 on February 21, 2009. Maggie Smith again starred and Alan Bennett played himself.

## Parking At The Lions Shop Is 2 Hours, Not 15 Years!



**THE LIONS SHOP**

But whether you come in your Van, or something a little more sporty, you will be really welcome when you visit The Lions Shop on Liverpool Road in Ainsdale. There you will find a treasure-trove of furniture, clothing, ornaments & bric-a-brac, books, and even the odd toy Van! And you will know that every penny we make goes towards the charitable activities of Southport Lions Club, which has been serving the community since 1962. Come and say 'hello,' look around and browse, and tell us if you have seen this Ad!

### **THE LIONS SHOP**

**664 LIVERPOOL ROAD, AINSDALE, SOUTHPORT, PR8 3LT**

**☎ 01704 577446** **🌐 WWW.THELIONSSHOP.INFO**





## **Do you live in an apartment?**

*If so, are you concerned with the way your management company is managing your apartment?*

We will provide a personal, professional and local service to all our clients and offer an initial free consultation to discuss our services in more detail.

If you would like any more information or want to find out how we can help you, call us on the number below; but remember, you are speaking to a real person in a local office, who works for us, just like in the old days !!!!!

If you wish to make an appointment for a FREE consultation call us today on

# **01704 535029**

**Westbridge Facilities Management  
11 Houghton Street  
Southport  
PR9 0NS**

**[www.westbridgemanagement.com](http://www.westbridgemanagement.com)**

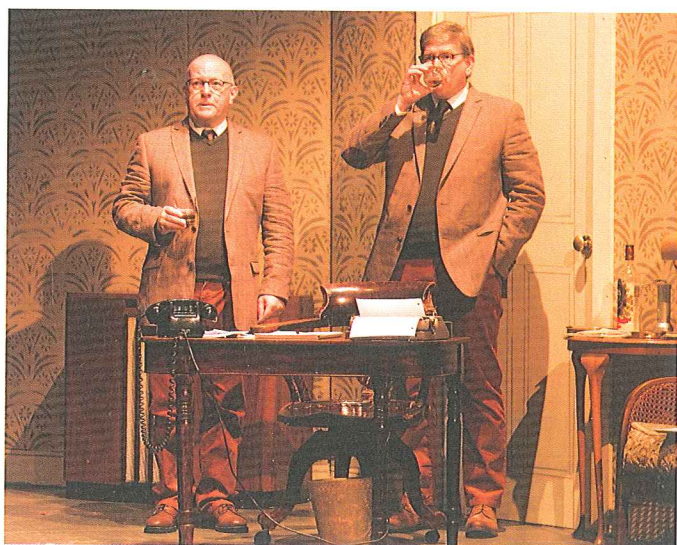


# Synopsis of Scenes

The action takes place over an 18 year period in Alan Bennett's house, garden and street in suburban Camden, London.

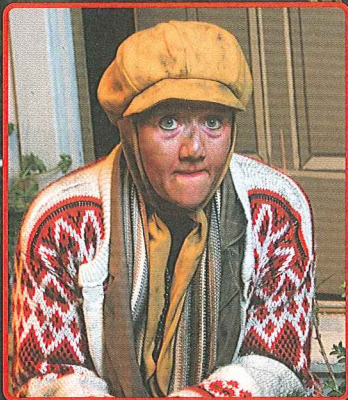
There will be an interval of 20 minutes between Act I and Act II.

We recommend that you beat the rush and pre-order your drinks in the bar prior to the performance.





# The in the



**Kathy Felton-Aksoy**  
*Miss Shepherd*



**Brendan Gillow**  
*Alan Bennett 1*



**Ted Bullen**  
*Alan Bennett 2*



**Margaret Hodge**  
*Mam/  
Miss Shepherd's Doctor*



**Nick Lloyd**  
*Rufus*



**Ceri Watkins**  
*Pauline*



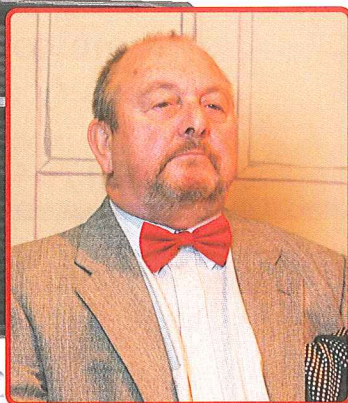
# ady Van



**Nikki Ritchie**  
Social Worker



**Simon Hawkins**  
Underwood



**Peter Slater**  
Gardner/Mam's  
Doctor/Leo Fairchild



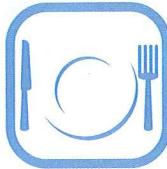
**Eddie Webster**  
Hospital Porter/  
Lout/Ambulance Driver



**Suzanne Gray**  
Nurse/Interviewer



# SUZANNE GRAY



Freshly prepared local & seasonal food delivered with pride

Corporate events

Event planning

Charity functions

Parties at home

Home cooked food  
delivery service

Outside catering  
& buffet service

**T** 01704 550257

**M** 07919 032 726

## a great little place

*great coffee, great art... for a great reason.*

Southport Food and Drink  
Festival Winner 2011

43 London Street  
Southport, PR9 0TH  
T. 01704 532 066



11C Hoghton Street  
Southport, PR9 0NS  
T. 01704 533 290

[enquiries@agreatlittleplace.org](mailto:enquiries@agreatlittleplace.org)

*outside catering service*



# Staging

Stage Manager .....	Adriañ Roberts
Assistant Stage Manager (Prompt) .....	Fran Percival
Properties .....	Sandy Town & The Props Team
Wardrobe .....	Sherel Coley, Kate Hargreaves, Jenny Parker & Maria Dorpman
Lighting .....	Adrian Roberts
Sound .....	Brian Hodge
Set Construction & Design .....	Syd Coley
Scenic Artist .....	Bob Jessamine
Photographs .....	Fletcherhill Photography
Programme Editor .....	Jacquie Bolshaw
Programme Sub Editor .....	Barry King
Programme Content & Research .....	Henry James
Programme Layout and Design .....	Mitchell & Wright (Printers) Ltd

## Music in this production

Hymn: *'Glory in the Highest'* sung by the Girls Choir of Norwich Cathedral  
Beethoven: *Piano Sonata No. 27 in E minor; second movement*  
Beethoven: *Piano Sonata No. 23 'Appassionata' in F minor; third movement*  
Beethoven: *Piano Sonata No. 8 'Pathetique' second movement*  
Faure: *Requiem 'In Paradisum'*

## Acknowledgements

The Director would like to thank Porters Funerals for the loan of a bier and also Dave Elsby for the Reliant Robin.

### The Little Theatre - Home of the Southport Dramatic Club.

The SDC wishes to ensure that all our patrons enjoy a comfortable, enjoyable and safe visit to our theatre. We should be grateful for your co-operation in helping us to achieve this. Please note the following:

- Should you arrive after the performance has started, you will be guided to your seats when a suitable opportunity occurs.
- At the end of the performance, exits will be open at both the front and back of the auditorium.
- First Aid assistance is regularly provided by volunteers from the St. John Ambulance Brigade. Should you require help, please advise our stewards on duty in the Foyer.
- Patrons with hearing impairments should note that the auditorium has an Induction Loop System for your assistance.
- Please ensure that all mobile phones and electronic devices are switched off during the performance.
- Photography and video recording are not allowed during the performance.



Designated Premises Supervisor, Alan Newport



# YOUR LOCAL FRIENDLY SOLICITORS

**Maxwell  
Hodge**

**SOLICITORS**

Provide a fast and efficient service for

- Wills
- Probate
- Court of Protection
- Conveyancing
- Powers of Attorney



michaelyates@maxweb.co.uk  
01704 872156

Appointments at our local office and home visits can be arranged please call Michael Yates.

[www.maxwellhodge.co.uk](http://www.maxwellhodge.co.uk)

**Aintree**

0151 526 9321

**Formby**

01704 872 156

**Heswall**

0151 342 6447

**Huyton**

0151 489 6161

**Kirkby**

0151 548 7370

**Maghull**

0151 526 7131

**West Kirby**

0151 625 9154

**Liverpool (city)**

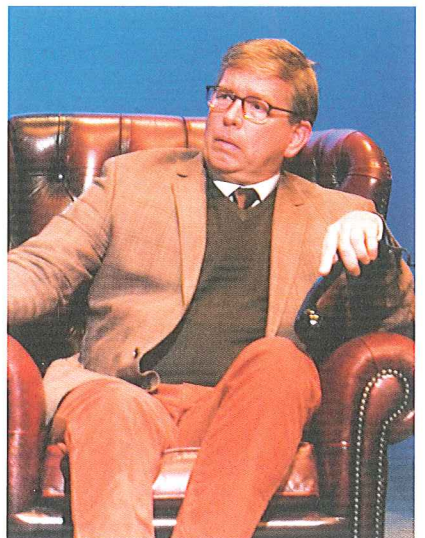
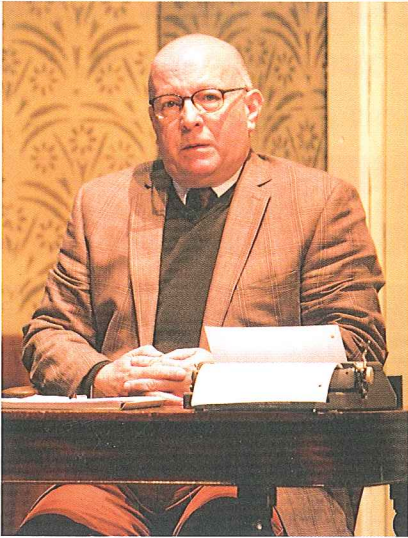
0151 227 4545

## Birkdale Boutique

Betty Barclay  
Olsen  
Bianca  
Doris Streich  
Gollehaug  
Lebek  
Steilmann  
Tia  
Oscar B  
Emreco  
Signature

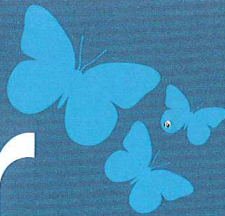
5 Weld Parade, Birkdale Village, Southport PR8 2DT  
Tel: 01704 569697







# nwcr



NORTH WEST CANCER RESEARCH

Incorporating Clatterbridge Cancer Research

## Help us to understand Cancer...

Funding cancer research for over 60 years.

NWCR 22 Oxford Street, Liverpool L7 7BL | T: 0151 709 2919 | F: 0151 708 7997

Donate today at: [www.nwcr.org](http://www.nwcr.org)

## PRINT QUALITY THAT STANDS OUT



**mitchell&wright**  
printers ltd

Tel: 01704 535529 - Email: [sales@mitchellwright.co.uk](mailto:sales@mitchellwright.co.uk)



# How the SDC functions

The Southport Dramatic Club is an amateur society. Very few people are actually employed at the theatre; everyone else is a volunteer/member. Actors, Directors, back-stage team, production team, front-of-house team etc. are all volunteers.

So how does the "Little" function? In this and future programmes we aim to tell you something of this process. Let us start with our Play Selection & Casting Committee or the PSCC as it is known to our members.

Are you sitting comfortably? Then we'll begin. All our plays are selected by the PSCC as much as twelve months before they reach the stage. The committee meets weekly

throughout the year when they select our future plays. In order to find possible plays they scan catalogues, scour the Dramatic Press and other research. The plays are then read by individuals and discussed by the group to assess their suitability.

Although there is no set formula – a season may include: the dramatic, the funny, the serious, and the thought provoking, so that we provide a popular season of entertainment for our audiences. The aim is to maintain our current record of over 90% attendances at shows. Quite an achievement with 400 seats to fill for eight nightly performances for eight shows !!

Having chosen a play a director will then be selected from a suitably experienced group of members. Prospective directors shadow an experienced director for several productions before taking over the entire role with all the responsibility that incurs.

A synopsis and description of the parts required for a particular play are published by the PSCC, via the Members' News & Views monthly newsletter, giving audition dates and inviting interested members to attend an audition. Next the production team will be appointed .....*but more of that in the next programme.*

## WORD GAME

Can you find the names of six plays written by Alan Bennett in the following anagrams?

- (1) LEVIATHANDENTHY
- (2) SOBRIETYSHHTOY
- (3) SAGALEDTINK
- (4) HYDROGENBENEFIT
- (5) GENESSLIPSI
- (6) CHERUBSSOAPA

The answers can be found on page 19

## DAVE ELSBY MOBILE MOTORING SERVICE

**WHY TAKE YOUR CAR TO THE GARAGE WHEN THE GARAGE CAN COME TO YOU?**

PROVIDING A UNIQUE AND PERSONAL SERVICE IN AND AROUND THE SOUTHPORT AREA

PROVIDING SERVICING AND REPAIRS TO ALL MAKES AND MODELS INCLUDING BRAKES, TYRES, EXHAUSTS, CAM-BELTS ETC.

### MOT TESTING

FOR ALL YOUR MOTORING NEEDS I CAN HELP **FREE** COLLECTION AND DELIVERY FROM HOME OR PLACE OF WORK - **NO** CALL OUT CHARGE!

**FOR HELP OR ADVICE ON ANY MOTORING PROBLEM CALL DAVE ON 01704 507268 OR 07980 713661**





**Margaret Mann**  
Director

# NOW IN REHEARSAL *'The Years Between'*

by Daphne du Maurier

Our next play, written in 1943, was inspired by a true event. The M.P. for Bodmin was reported 'missing on active service' and his wife took his place in parliament, unopposed, following which it was rumoured that he was still alive!

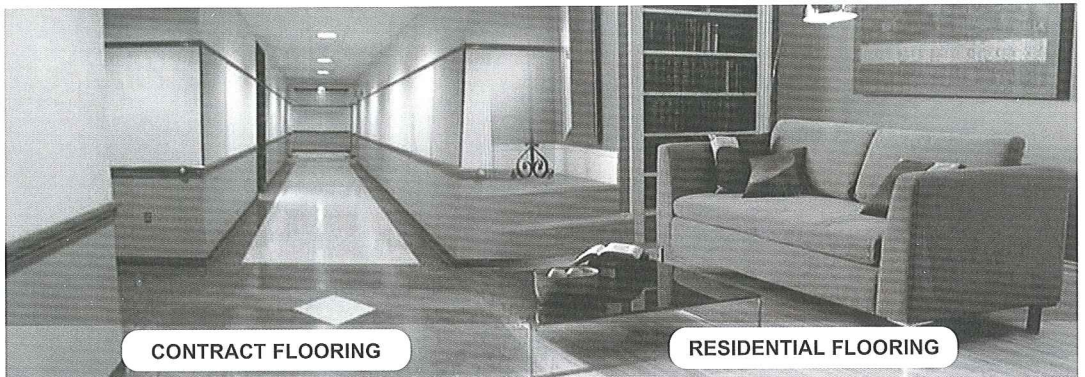
In our play, Diana Wentworth, believing that her husband Michael, an M.P. and soldier, has been killed in action, develops a new role as a successful parliamentarian dedicated to social change and also embraces new emotional ties. Then news comes that Michael, her husband, may not be dead after all and later, further secrets are revealed! Daphne du Maurier admitted in later life that Diana's emotional dilemma was drawn from her own experience – her ambivalent marriage to a secretive war hero, General "Boy" Browning.

Maurier admitted in later life that Diana's emotional dilemma was drawn from her own experience – her ambivalent marriage to a secretive war hero, General "Boy" Browning.

We have a very good and dedicated cast, including an excellent young boy. This play, as well as being an interesting evening's entertainment, is remarkably prescient in forecasting changing times and the road to a new post-war world giving women greater independence. As we have rehearsed this fascinating play, we have found complexities that we hadn't realised existed. Each time we have run through a scene, we've discussed it more and more- the hallmark of a very good script.

We believe you will think so, too.

*Margaret Mann, Director*



### Specialists in all Business Applications

- Carpet for Offices
- Vinyl and Linoleum
- WCs and Kitchens
- Wet areas
- Safety Flooring
- Sports Surfaces
- Entrance Systems
- Hardwood Flooring



**West Lancashire  
Flooring Limited**

74 Ormskirk Business Park, New Court Way,  
Ormskirk, Lancashire L39 2YT  
T: 01695 578369 F: 01695 570623  
admin@wlflooring.co.uk  
www.wlflooring.co.uk



COMING SOON  
to the Little Theatre  
Home of the Southport Dramatic Club

Birkdale  
Orpheus  
Society

5th - 12th October 2013

Lloyd Webber's

# Whistle down the Wind

Box Office Opens:  
28th September 2013  
at 11.00am

Music by Andrew Lloyd Webber, Lyrics by Jim Steinman  
Advanced Bookings: 01704 564042

SDC  
Production



Box Office Opens:  
18th October 2013  
at 11.00am

25th October - 2nd November 2013  
**The Years Between**

A tale of intrigue and romance

by Daphne du Maurier

Directed by Margaret Mann

Maghull  
Musical  
Theatre  
Company

6th - 9th November 2013

# Crazy for You

by arrangement with

Musicscope and Stage Musicals Ltd. of New York

Advanced Bookings: 01695 632372

Box Office Opens:  
30th October 2013  
at 11.00am - 5.00pm

SDC  
Production



Box Office Opens:  
15th November 2013  
at 11.00am

22nd - 30th November 2013

# Old Actors Never Die

An hilarious comedy

by Lynne Brittney

Directed by Poppy Flanagan

SDC  
Production



Public Box Office Opens:  
21st October 2013  
at 11.00am

18th December 2013 - 5th January 2014

# Aladdin

SDC's Family Friendly Pantomime

by Stephen Hughes-Alty

Directed by James Hughes-Alty

Party Bookings NOW  
on 01704 504800

## Word Game Answers - from page 17:

- |                         |                       |
|-------------------------|-----------------------|
| (1) The Lady in the Van | (4) Beyond the Fringe |
| (2) The History Boys    | (5) Single Spies      |
| (3) Talking Heads       | (6) Habeas Corpus     |



# Southport Dramatic Club

A Romantic and Intriguing play by  
Daphne du Maurier

# The Years Between

Directed by  
Margaret Mann

25th October –  
2nd November 2013  
7.45pm



**LITTLE THEATRE**

Home of the  
Southport Dramatic Club

Box Office Opens: 18th October 2013 at 11.00am

Box Office Tel: (01704) 530521/530460

[www.littletheatresouthport.co.uk](http://www.littletheatresouthport.co.uk) Koghton Street, Southport PR9 0PR

No Booking Charges  
or card fees



Find us on  
facebook