

# Southport Dramatic Club

*A Sharp Edged Comedy*

# Entertaining Angels

*By Richard Everett*

*directed by Celia Jimmington*

12th April -  
20th April  
2013  
7.45pm

Sponsored by



**mitchell&wright**  
printersltd



**LITTLE THEATRE**  
Home of the  
Southport Dramatic Club

No booking  
charges or card fees



**Box Office Tel: (01704) 530521/530460**

[www.littletheatresouthport.co.uk](http://www.littletheatresouthport.co.uk)

**Hoghton Street, Southport PR9 0PA**



Find us on  
facebook

**PRINT QUALITY THAT STANDS OUT**



**mitchell&wright  
printersltd**

Tel: 01704 535529 - Email: [sales@mitchellwright.co.uk](mailto:sales@mitchellwright.co.uk)



# Director's notes

The time is now, in an English rectory garden. Well not quite NOW because it's actually summer. A recent traumatic event has led to some neglect of a usually well tended space.

A small tributary from a river flows down from gentle hills, finally reaching the stream in the deceased clergyman's garden. Walls rise, trees grow, birds sing and bees buzz. The house stands and the stream flows. All is peaceful under heaven! Ha! All I can say is, "You should have been here last week."

The theory is that anything is possible in art. So, begin with the dream of real trees, real grass and real water! "Are you



*Celia Timmington*  
Director

off your head?" they said. "Think of the electrics, obscured lighting, worms, bugs and the flood."— "But the professionals did it! What else is an orchestra pit for pray?

Ideal for a stream." Thus began the process of co-operation; then came the jesting. Those asking if everything was going swimmingly, had the lawn been watered or how about an hour's fishing on Sunday.

A lot of shouting and anxiety, much laughter and great teamwork from the cast the crew and staging have produced what is in front of you now. The suggestion is that we enter it for the Chelsea Flower Show this summer! I don't think so.

Please relax and enjoy Richard Everett's sharp edged comedy.

*Celia Timmington*  
Director





the  
**office**  
BAR & RESTAURANT

## Pre Theatre Dinner

# 10% off your final bill

when theatre ticket is shown

**we are opposite the  
Little Theatre on Hoghton Street**

bar menu served Tues - Sun / 11.00 - 4.00  
with restaurant serving lunchtime 2 course menu  
from £10 / 12.00 - 2.30 Tues - Sat.

Tuesday £10 menu served all evening  
& house wine £10 per bottle.  
TDH & A la carte also available.

Wed - Sat from 5.30pm £10 menu available  
on orders before 6.30pm.  
TDH & A la cart also available.

Sunday @ The Office 12.00 - 6.30  
two courses £10 menu,  
house wine £10 per bottle.  
Sunday menu includes roast of the day.

10% discount cannot be used  
when dining on the £10.00 menu.

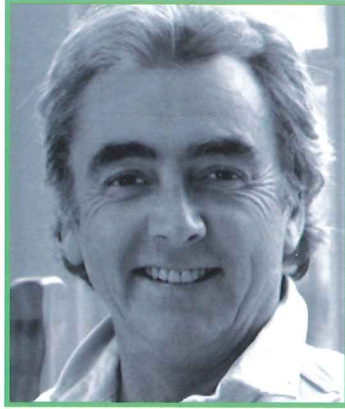
For Bookings Telephone: 543354  
9b Hoghton Street, Southport. PR9 0TE





# Richard Everett

Richard Everett's professional acting career began in 1970 when he had a number of roles in television, theatre and films. He starred with Malcolm McDowell in the 1969 film 'If' and in 1970 with Vincent Price in 'Cry of the Banshee'. He also appeared in 'Hamlet' which was directed by Tony Richardson. The cast included: Marianne Faithful, Nicol Williamson and Anthony Hopkins.



Richard Everett  
Author

Richard created his own fringe theatre company at the end of the 1970s. He and David Wickert financed and constructed The Upstream Theatre in London (by the Young Vic). He was Artistic Director there for three years.

During the 1980s Richard began to write. His stage plays include: 'Close to the Wind', 'Happy Event', 'Present From The Past', and 'Hand Over Fist' and have been performed in the

United Kingdom and also in other countries. 'Entertaining Angels' was first shown at the Chichester Festival Theatre in 2006 and his play 'Demons' premiered in Heidelberg in 2009. Richard has also written for BBC Radio 4. His work includes 'Something to Say' and 'Grace and Favour'. He has also written many scripts for animation. His work *Joseph* for

BBC 2's Testament Series was BAFTA nominated. The playwright wrote the screenplay for the British film 'Two Men Went to War' directed by John Henderson. The cast included: Kenneth Cranham, Derek Jacobi, Phyllida Law and Julian Glover and was released in the UK in 2002. The movie was included in the Hollywood Film Festival and shown across America.

Richard runs seminars and gives writing and comedy workshops to students at all levels. Richard also holds a weekly drama workshop in Bognor for adults with Down's Syndrome and special needs. The playwright is director of First Media Syndicate, a company that works with investors to find media based projects that might have commercial benefits.







Visit our website at:  
[www.birkdaleorpheus.co.uk](http://www.birkdaleorpheus.co.uk)



NODA National Operatic  
and Dramatic Association  
Registered Charity  
No: 701236

**BIRKDALE ORPHEUS SOCIETY**

**PRESENTS**

**RODGERS AND HAMMERSTEIN'S**

# **CAROUSEL**

**AT THE**

**LITTLE THEATRE**  
**HOGHTON STREET, SOUTHPORT**

**Saturday 25th May 2013 to Saturday 1st June 2013**

**Evenings start at 7.30pm**

**Matinee: Sat 1st June 2013 at 2pm**

**Music by RICHARD RODGERS**

**Book & Lyrics by OSCAR HAMMERSTEIN 11**

**Based on the play 'LILIOM' by Ferenc Molnar, as adapted by  
Benjamin F. Glazer.**

**Original dances by Agnes de Mille**

**This amateur production is presented by arrangement with  
JOSEF WEINBERGER LTD  
on behalf of R&H Theatricals of New York.**

# Entertaining Angels

Richard Everett's 'Entertaining Angels' premiered at the Chichester Festival Theatre in 2006. It opened the theatre's summer season that year, under the direction of Alan Strachan and was produced by Michael Condron. The play takes place in the garden of a vicarage and features Grace, who has just lost her husband, Bardolph, the Vicar. Following his death she feels she now no longer needs to hold her tongue.

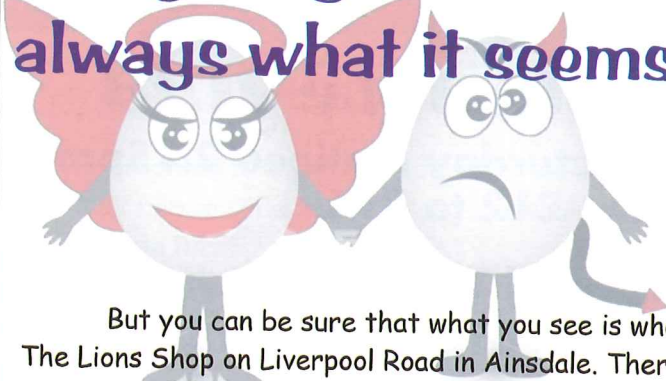
Richard Everett has said he wrote 'Entertaining Angels' after a discussion in his local church with a fellow parishioner. The person he had been speaking to

referred to one of the churchgoers as "one of the little old ladies in tennis shoes who sit in the front pew". Richard thought this to be "incredibly patronising" because he knew the lady and said, "this remarkable woman had been married to a clergyman and spent many years working faithfully alongside him. She was a woman of great intelligence and spiritual depth who had spent many years, perhaps unwisely, holding her tongue largely to spare her husband's embarrassment at her outspokenness". The playwright first used the lady from the church in his BBC Radio 4 play called 'Grace and

Favour', about Grace. He explores the character further in 'Entertaining Angels'.

The production toured the country twice and has been seen by over 100,000 people and grossed over £2,000,000. When 'Entertaining Angels' was first released, it received favourable reviews. The Sunday Times wrote "Richard Everett has written a warm, glowing, serious comedy, like an Alan Ayckbourn play finished by J.M. Barrie". The Daily Telegraph called the play "a funny, touching and genuinely thought-provoking comedy".

## Everything is not always what it seems!



**THE LIONS SHOP**

But you can be sure that what you see is what you get when you visit The Lions Shop on Liverpool Road in Ainsdale. There you will find a treasure-trove of furniture, clothing, ornaments & bric-a-brac, and ceramics. And you will know that every penny we make goes towards the charitable activities of Southport Lions Club, which has been serving the community since 1962. Come and visit us, look around and browse, and tell us if you have seen this Ad!

**THE LIONS SHOP**

**664 LIVERPOOL ROAD, AINSDALE, SOUTHPORT, PR8 3LT**

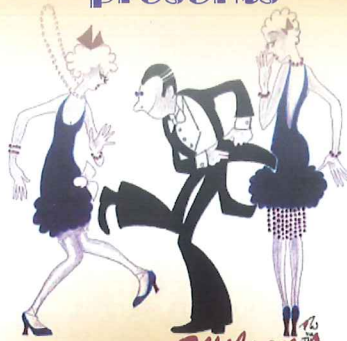
**☎ 01704 577446    🌐 WWW.THELIONSSHOP.INFO**



# Maghull Musical Theatre Company

presents

*I could be Happy  
with you*



*Fancy Forgetting*

*It's Never Too Late  
to Fall in Love*

*Sandy Wilson's*

*Won't you  
Charleston?*

## THE BOY FRIEND

at the Little Theatre, Southport

**Wednesday 12th June to  
Saturday 15th June 2013**

**Evenings 7.30pm Saturday Matinee 2.15pm**

**Tickets: £12 to £14**

**Advance Bookings - until Tuesday 4th June to**

Betty and Graham on **01695 632 372**

**then from Wednesday 5th June to the  
Little Theatre Box Office, (11am to 5pm)**

Hoghton Street, Southport PR9 0PA

**01704 530 521**

AN AMATEUR PRODUCTION BY ARRANGEMENT WITH SAMUEL FRENCH LIMITED

[www.maghullmtc.co.uk](http://www.maghullmtc.co.uk)



# Synopsis of Scenes

## Act 1

A rectory garden in summer.  
The time is now.

## Act 2

The same two days later.

There will be a 20 minute interval between Acts 1 and 2

We recommend that you beat the rush and pre-order your drinks in the bar prior to the performance.



## Car Parking - A Special Offer!

We are delighted to announce a new arrangement with the N.C.P. car park in London Street (only a few minutes away – opposite the Albert Hotel)

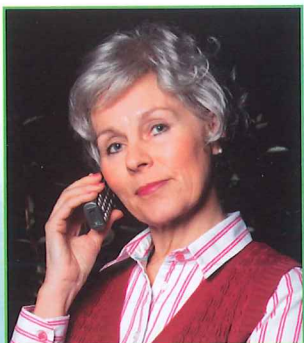
The N.C.P. car park usually charges at an hourly rate. However, if you present your 'car parking' ticket at the Little Theatre Box Office, Bar or Foyer Servery you will be given a 'follow-on' ticket. When you return to the N.C.P. car park to pay before driving away you then insert firstly the 'car parking' ticket followed by your 'follow-on' ticket and the charge will be reduced to **£1.00**.

We hope you will find the new service useful, but please remember to collect your 'follow-on' ticket from the Theatre before leaving to obtain this valuable reduction.

*This service is operated by N.C.P. for our patrons and not by the S.D.C.*



# Entert



*Grace*  
Sandra Unsworth



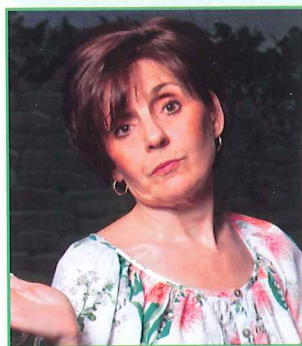
*Ruth*  
Helen Bennett



*Bardolph*  
Ray Mann



*Jo*  
Ceri Watkins



*Sarah*  
Helene Porter



# Training Angels



## *A Question and Answer Session with the cast:*

**Grace:** *Sandra Unsworth*

**Question:** "What is the most important lesson you have learned from all those years as a vicar's wife?"

**Answer:** "Always blind bake your pastry cases."

**Ruth:** *Helen Bennett*

**Question:** "What did you find to do with your spare time whilst working in Uganda?"

**Answer:** "I founded the Kampala Gilbert & Sullivan Society, then sadly a horrific incident with a lawn mower put paid to a promising amateur theatrical career."

**Bardolph:** *Ray Mann*

**Question:** "What pearls of wisdom will you take with you from all your years as a clergyman?"

**Answer:** "Always blind bake your pastry cases."

**Jo:** *Ceri Watkins*

**Question:** "Has Helping people through their emotional traumas and crises taken its toll on YOU Psychologically?"

**Answer:** "No, it's just a nervous tick. Sorry I knocked your double brandy over."

**Sarah:** *Helene Porter*

**Question:** "That's an unusual perfume you're wearing. What is it?"

**Answer:** "What? Oh, I'm not wearing any. My husband's in wet fish."

*Celia Timmington, Director*



## **Do you live in an apartment?**

*If so, are you concerned with the way your management company is managing your apartment?*

We will provide a personal, professional and local service to all our clients and offer an initial free consultation to discuss our services in more detail.

If you would like any more information or want to find out how we can help you, call us on the number below; but remember, you are speaking to a real person in a local office, who works for us, just like in the old days !!!!!

If you wish to make an appointment for a FREE consultation call us today on

# **01704 535029**

**Westbridge Facilities Management  
11 Houghton Street  
Southport  
PR9 0NS**

**[www.westbridgemanagement.com](http://www.westbridgemanagement.com)**



# Staging

Stage Manager .....	Robert Jones
Assistant Stage Manager (Prompt) .....	Jenny Parker
Assistant Stage Managers .....	Muriel Leefe, Lynne Hawksworth
Properties .....	Barry King, Geoffrey Timmington
Wardrobe .....	The Director & Cast
Lighting .....	Team LX
Sound Design .....	Chris Ratcliffe
Set Design .....	Syd Coley
Set Construction & Design .....	SDC Construction Team
Scenic Artist .....	Bob Jessamine
Photographs .....	Fletcherhill Photography
Programme Editor .....	Jacquie Bolshaw
Programme Sub Editor .....	Barry King
Programme Content & Research .....	Henry James
Programme Layout and Design .....	Mitchell & Wright (Printers) Ltd

## Music in this production

Extracts from *For the Beauty of the Earth & The Lord is My Shepherd* - John Rutter;  
*Hallelujah Chorus* - Handel; *Adagio for Strings* - Barber; Schubert's Piano Quintet;  
*I am Woman* - Helen Reddy

## Acknowledgements

The Director would like to thank: Lady Green Garden Centre,  
The Lawnmower Museum, Dobbies Garden Centre and 'an angel called Ruth'.

### The Little Theatre - Home of the Southport Dramatic Club.

The SDC wishes to ensure that all our patrons enjoy a comfortable, enjoyable and safe visit to our theatre. We should be grateful for your co-operation in helping us to achieve this. Please note the following:

- Should you arrive after the performance has started, you will be guided to your seats when a suitable opportunity occurs.
- At the end of the performance, exits will be open at both the front and back of the auditorium.
- First Aid assistance is regularly provided by volunteers from the St. John Ambulance Brigade. Should you require help, please advise our stewards on duty in the Foyer.
- Patrons with hearing impairments should note that the auditorium has an Induction Loop System for your assistance. Hearing wands are also available from our stewards.

Designated Premises Supervisor,  
Alan Newport

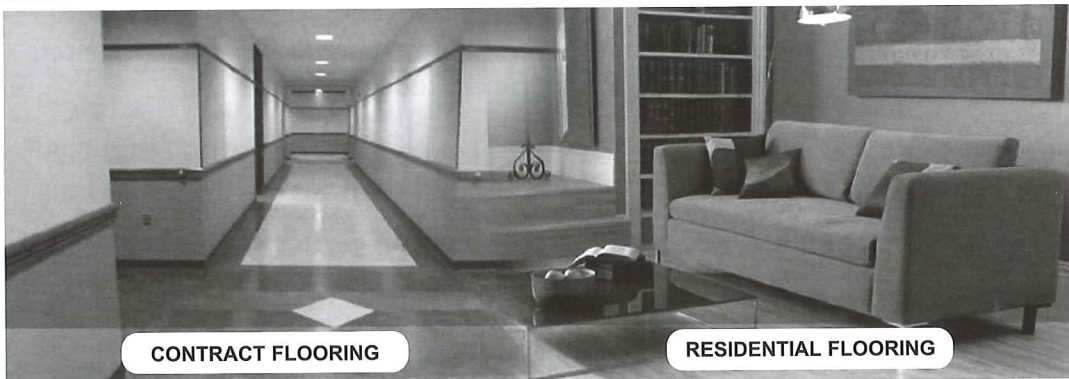


# NORTH WEST CANCER RESEARCH FUND

HELP US FIND THE CAUSE

**Funding Cancer Research for Over 50 Years**

22 Oxford Street, Liverpool L7 7BL Tel: 0151 709 2919  
Charity Reg. No. 223598



CONTRACT FLOORING

RESIDENTIAL FLOORING

### Specialists in all Business Applications

- Carpet for Offices
- Vinyl and Linoleum
- WCs and Kitchens
- Wet areas
- Safety Flooring
- Sports Surfaces
- Entrance Systems
- Hardwood Flooring

*Amico*

**Tarkett**



**West Lancashire  
Flooring Limited**

74 Ormskirk Business Park, New Court Way,  
Ormskirk, Lancashire L39 2YT  
T: 01695 578369 F: 01695 570623  
admin@wlflooring.co.uk  
www.wlflooring.co.uk



# British Lawnmower Museum Southport

Enjoy a unique experience at the multi-award winning British Lawnmower Museum. The nation's foremost Museum of Garden Machinery is situated at 106 – 114 Shakespeare Street, Southport, Merseyside, where it houses over two hundred restored exhibits.

Lawnmowers are a British obsession and some of the best lawnmowers in the world have been manufactured in this country. Sadly, we are losing this great piece of British engineering heritage. Many exhibits, memorabilia and industrial artefacts date from the Victorian and Edwardian eras and their restoration helps keep alive a small part of that British engineering heritage. Edward Beard Budding invented the lawnmower in Gloucester in 1830 when he was deemed to be a 'madman' for making such a contraption! He had to test his machine during the night so that no-one would see him.

At the museum you can see the lawnmowers of the rich and famous such as those of Prince Charles, Princess Diana, Brian May, Paul O'Grady and many more. You can also see the most expensive and the fastest, from the first electric mower to the first 'robotic' mower. The museum is a tribute to the garden machinery industry over the last two hundred years.

**"It's all you need to mow"** The museum is open to the public all year except Sundays and Bank Holidays from 9.00 a.m. to 5.00 p.m. Adults inclusive of audio tour £2.00 – children inclusive of audio tour £1.00. Personal guided tours can be arranged for parties and groups.

**Half price entrance to the museum if you mention "Entertaining Angels"**

Tel : (0044) (0)1704 501336 Fax : (0044) (0)1704 500564



# YOUR LOCAL FRIENDLY SOLICITORS

**Maxwell  
Hodge**  
SOLICITORS

Provide a fast and efficient service for

- Wills
- Probate
- Court of Protection
- Conveyancing
- Powers of Attorney



michaelyates@maxweb.co.uk  
01704 872156

Appointments at our local office and home visits can be arranged please call Michael Yates.

[www.maxwellhodge.co.uk](http://www.maxwellhodge.co.uk)

**Aintree**  
0151 526 9321

**Kirkby**  
0151 548 7370

**Formby**  
01704 872 156

**Maghull**  
0151 526 7131

**Heswall**  
0151 342 6447

**West Kirby**  
0151 625 9154

**Huyton**  
0151 489 6161

**Liverpool (city)**  
0151 227 4545

## Birkdale Boutique

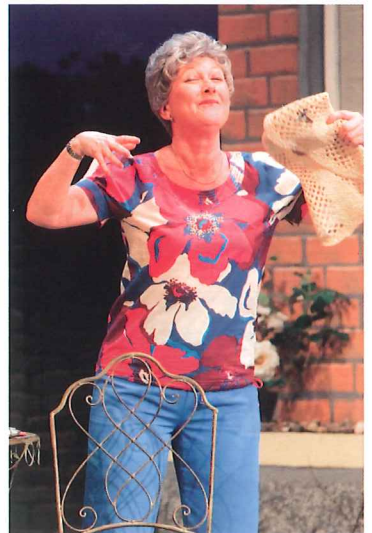
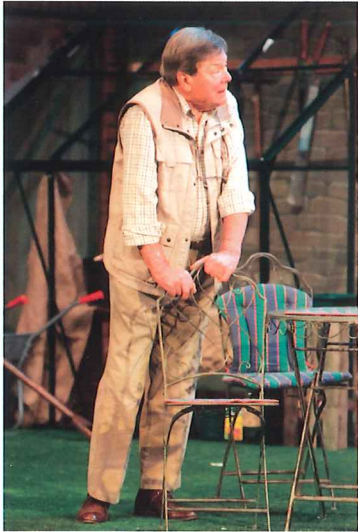
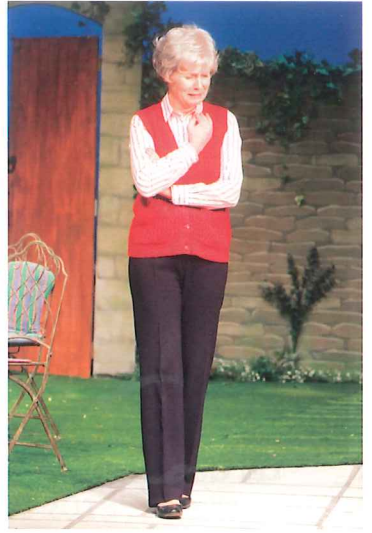
5 Weld Parade,  
Birkdale Village,  
Southport PR8 2DT  
Tel: 01704 569697

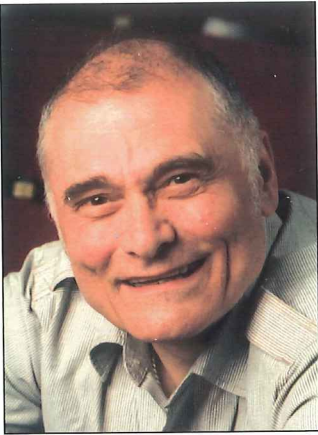
Bianca  
Doris Streich  
Emreco  
Frank Walder  
Habella  
Lebek  
Olsen  
Poppy  
Signature  
Steilmann



[www.birkdaleboutique.co.uk](http://www.birkdaleboutique.co.uk)







**Les Gomersall**  
Director

# NOW IN REHEARSAL

## Fawlty Towers

Our season closes with three episodes from the popular 1970s sit.com "Fawlty Towers" written by John Cleese and Connie Booth. Rehearsals are well under way and the talented cast are working tirelessly to recreate the memorable characters Basil and Sybil Fawlty, Manuel, Polly, Major Gowen and of course the two lovely old lady residents Miss Tibbs and Miss Gatsby.

I hope you enjoy the episodes chosen which are "A Touch of Class" the one with the housebricks in the brief case, "The Hotel Inspectors" in which Basil mistakes a number of guests as an hotel inspector and my favourite episode "Communication

Problems" in which a guest, Mrs Richards, never has her hearing aid switched on as it wastes the battery!!!

Please join us in the capital of the English Riviera, Torquay. I promise you will have some fun. See you there.

*Les Gomersall, Director*



The mark of excellent care

## Care and support in your own home

- Shopping and meal preparation
- Respite services
- Prompting or assistance with medication
- Companionship
- End of life care
- Overnight support and live in care

Call us on 01704 563 333 or email: [sefton@caremark.co.uk](mailto:sefton@caremark.co.uk)



The mark of excellent care

[www.caremark.co.uk/sefton](http://www.caremark.co.uk/sefton)



**COMING SOON**  
to the Little Theatre  
Home of the Southport Dramatic Club

---

**SDC**  
Production



Box Office Opens:  
3rd May 2013  
at 11.00am

10th - 18th May 2013

# Fawlty Towers

A Comedy by John Cleese & Connie Booth

Directed by Les Gomersall

---

**Birkdale**  
**Orpheus**  
**Society**

Box Office Opens:  
18th May 2013  
at 11.00am

25th May - 1st June 2013

Rodgers & Hammerstein's

# Carousel

Music by Richard Rodgers, Book & Lyrics by Oscar Hammerstein II

Matinee – Saturday 1st June 2013  
Advanced Bookings: 01704 564042

---

**SDC Bar/Studio**  
Production



Box Office Opens:  
28th May 2013  
at 11.00am

4th - 8th June 2013

# Damages

by Stephen Thompson

Directed by Stephen Hughes-Alty

---

**Maghull**  
**Musical**  
**Theatre**  
**Company**

Box Office Opens:  
5th June 2013  
at 11.00am

12th - 15th June 2013

Sandy Wilson's

# The Boy Friend

by arrangement with Samuel French Ltd.

Advanced Bookings: 01695 632372

---

**Old Hall**  
**Brass**

Advanced bookings:  
01942 715684

Sunday 16th June 2013

# An Evening of Music with Old Hall Brass

---

# Southport Dramatic Club

## FAWNTY TOWERS

A Comedy by  
John Cleese &  
Connie Booth

From the Classic  
TV Series

Directed by  
Les Gomersall

10th May -  
18th May 2013  
7.45pm



Sponsored by



Duncan Sheard Glass  
Chartered Accountants



**LITTLE THEATRE**

Home of the  
Southport Dramatic Club

No booking charges  
or card fees



Box Office Opens: 3rd May 2013 at 11.00am

Box Office Tel: (01704) 530521/530460

[www.littletheatresouthport.co.uk](http://www.littletheatresouthport.co.uk)

Houghton Street, Southport PR9 0PA



Find us on  
facebook