

Southport Dramatic Club



# Calendar Girls

A play by Tim Firth

Based on the Miramax  
motion picture by  
Juliette Towhidi  
and Tim Firth

supporting  
Leukaemia Research

Directed by  
Margaret Mann

21st - 29th  
September 2012

7.45pm



  
**LITTLE THEATRE**  
Home of the  
Southport Dramatic Club



Box Office Tel: (01704) 530521/530460  
www.littletheatresouthport.co.uk Hoghton Street, Southport PR9 0PA

the  
**office**  
BAR & RESTAURANT

## Pre Theatre Dinner

# 10% off your final bill

when theatre ticket is shown

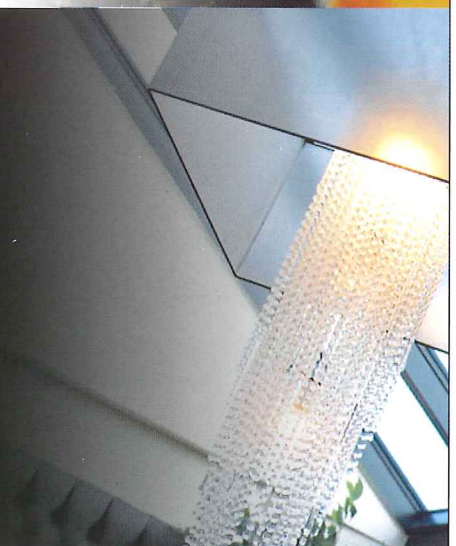
**we are opposite the  
Little Theatre on Houghton Street**

bar menu served tues-sun  
11.00/4.30

with restaurant serving  
12.00/2.30 tues/sat

sunday menu £10 two courses  
12.00/6.30 A La Carte also available  
tuesday menu £10 two courses  
5.30/9.00 A La Carte also available  
wed-sat TDH & A La Carte available  
5.30/9.00

For Bookings Telephone: 543354  
9b Houghton Street, Southport. PR9 0TE



# Director's notes

When we heard that "Calendar Girls" was to be released for amateurs in September, 2012, we knew it would make a very good opening play for our season. Most people know about the W.I. ladies, from Yorkshire, who posed nude for a calendar which raised thousands of pounds for Leukaemia Research. Their story was made into a film and, subsequently, a play. It was a pleasure to be invited to direct this play, a true story, because its main theme is trying to help stop, as the playwright puts it, "this cheating, sly, conniving, silent, bloody disease that cancer is".

We knew our actors would be attracted to this play and, in a good cause, we thought our girls would be prepared to emulate the W.I. members!



Margaret Mann  
Director

We have been blessed with an excellent group of nine ladies, three gentlemen, Prompt and Stage Manager, who have worked together superbly and become a very tight - knit, happy and dedicated team. We have been joined by a splendid

crew, including our sound, lights, properties, and staging teams. You will see the results of their expertise this evening.

We are grateful to everyone who has been involved with this production -from the members who welcomed you in to see "Calendar Girls" to the Baker who made the very big buns for Celia! Finally, thank you, our patrons, for supporting the S.D.C. again, this season. We hope, like us, you will enjoy the fun, laughter - and the sadness - in our production of "Calendar Girls"

This production is a tribute to the many people, and their families, who have suffered from Leukaemia, especially Linda.

Margaret Mann.  
Director

# Chairman's notes

It's gives me great pleasure to welcome you all to our new season of plays at the Southport Dramatic Club. With its wonderful mix of contemporary award winning plays, classical drama, comedy, thrills and pathos, this year promises to be up there with the best of them.

I would like to thank our regular subscribers for your continued presence at our 'Little' theatre; words cannot express how much we appreciate your support and encouragement. For those of you who are here for the first time... a very big welcome. I



Alistair Hewitt  
Chairman

hope that you enjoy your experience and come back to see many of our future productions.

As ever, we have been busy over the summer, striving to improve your experience here. Regular patrons will notice the refurbishment of our foyer and we hope that you admire the new decor.

Meanwhile, sit back, relax and enjoy the show. It promises to be a real treat!

Alistair Hewitt  
Chairman



**BIRKDALE ORPHEUS SOCIETY**

NODA National Operatic and Dramatic Association

Registered Charity No. 701236

presents

**The Lambeth Walk Musical**

*featuring*

**The Sun Has Got His Hat On**

**Leaning On a Lamppost**

*and*

**Once You Lose Your Heart**

# ME AND MY GIRL

Book and Lyrics by

**L. Arthur Rose and Douglas Furber**

Music by

**Noel Gay**

Book revised by

**Stephen Fry**

Contributions to revision by

**Mike Ockrent**

## Little Theatre

Hoghton Street, Southport

**Saturday 6th - Saturday 13th October 2012**

**Evenings start at 7.30pm**

**Matinee Saturday 13th October starts at 2.00pm**

**Advance Ticket Sales Tel: 01704 564042**

**Theatre Box Office opens 29th September 2012**

**11.00am - 2.30pm Tel: 01704 530521**

*Visit our website:*

**[www.birkdaleorpheus.co.uk](http://www.birkdaleorpheus.co.uk)**



An amateur production by arrangement with Samuel French Ltd.  
Originally produced at the Adelphi Theatre by Richard Armitage  
Subsequently produced at the Marquis Theatre, New York City by Richard Armitage  
Terry Allen Kramer, James M. Nederlander and Stage Promotions Ltd. © Co.

# Tim Firth

Tim Firth was born in 1964 in the Wirral and has always lived in the North West of England. While at school in Warrington, Tim used to spend the majority of his time writing songs. He decided to become a writer after going on an Arvon Foundation course in West Yorkshire, just before he was to go to Cambridge. The course was run by Willy Russell. His work from it was optioned for a production company.

During his first year at Cambridge, Tim met up

with Sam Mendes. Mendes directed all of Tim's plays at Cambridge, and the two of them created a theatre company, which performed on barges, in Edinburgh and at Rep.Theatres. Tim also began to write for the Footlights revue team.

After Cambridge, Tim was commissioned to write a full length play by Alan Ayckbourn. The play was called Neville's Island and it had a West End run. The film Calendar Girls, which

was written by Firth, was released in 2003. Helen Mirren and Julie Walters starred in the production and it is seventh in the charts of the most successful British films. Calendar Girls was adopted for the stage by Firth and its original West End run took place in 2009. Its stars included Patricia Hodge, Lynda Bellingham and Gaynor Faye.

Tim lives with his wife Katy and has three children Jack, Joe and Georgia.

## A little bit of family history...

The elderly lady in the black and white picture is Polly, the Great Grand Aunt of a member of the Southport Dramatic Club. The pearls she is wearing were also worn by Polly's granddaughter Beryl, who was Miss January on the original calendar. Beryl is the lady in the white hat and glasses.





# Story of the Calendar Girls

The idea for the calendar came about during a Women's Institute meeting in Rylstone, Yorkshire, when a member, Tricia Stewart, suggested they do an alternative WI Calendar in the nude. When John Baker the husband of one of the members, Angela Baker, died from Non-Hodgkin's Lymphoma in 1998, the group were inspired to create the calendar. During John Baker's illness, Angela and family and friends had been raising money. They decided to do the calendar for the Leukaemia Research Fund.

Originally, the idea was to raise enough money to purchase a new sofa on the hospital ward, where John, who the calendar was dedicated to, was receiving treatment. However the women have now collected over £3m for Leukaemia Research.

Angela talking on a documentary on the

Calendar Girls DVD says: "The WI was asking for pictures for the annual calendar. Usually they are looking for sunsets, post boxes, village and snow scenes. Then Tricia nudged me and said we could do this ourselves but nude like the Pirelli calendar. It wasn't until John became ill that the idea came back." The group thought they would have 3,000 copies of the calendar printed and the 11 women started work on it in October 1998. Terry Logan, the husband of Lynda who appeared in the calendar as Miss July took the photographs. Angela continues: "Working on the calendar was hilarious, it got very noisy."

The Calendar Girls chose a sunflower as a symbol of their fundraising as John grew sunflowers while he was ill. He would give them to people and he hoped he would be better when they flowered, but sadly this did not happen.

The calendar was launched on April 12, 1999 at the same time as the Annual Conference of Leukaemia Research in Leeds. It was held at the Devonshire Arms in Cracoe, the pub's owners, Jennings brewery, had sent out press cuttings. Angela says: "Everyone descended on the Devonshire. For days the excitement continued in the papers."

At the end of 1999, 88,000 calendars were sold, double the Pirelli calendar. At the time, the women handed over a cheque to Leukaemia Research for £331,000. Then the women were interviewed by a journalist for the New York Times and they went to promote the calendar in America. The Hollywood film was released in 2003 and it was made into a stage play in 2008.

# Maghull Musical Theatre Company

presents



©© Tribune Media Services inc.

Book by **Thomas Meehan**

Music by **Charles Strouse**

Lyrics by **Martin Charnin**

at the

**Little Theatre, Southport**

**Wednesday 7th November to  
Saturday 10th November 2012**

Evenings 7.30pm Saturday Matinee 2.15pm

**Tickets: £12 to £14**

**Concessions (under 14's) £10**

Advance Bookings - until 30th October to

**Betty and Graham on 01695 632 372**

then from 31st October at the

**Little Theatre Box Office, (11am to 5pm)**

Hoghton Street, Southport PR9 0PA

**01704 530 521**



Original production directed by Martin Charnin. Originally produced by Irwin Meyer, Stephen R. Friedman, Lewis Allen, Alvin Nederlander Associates Inc., The John F. Kennedy Center for Performing Arts, Icarus Productions.  
Based on "Little Orphan Annie" ® by permission of the Tribune Media Services Inc.

This Amateur production is presented by arrangement with JOSEF WEINBERGER LTD.  
on behalf of MUSIC THEATRE INTERNATIONAL of NEW YORK

**[www.maghullmtc.co.uk](http://www.maghullmtc.co.uk)**



# Synopsis of Scenes

The action takes place in Knapeley village, Yorkshire, in the church hall and on top of a nearby hill (John's hill), and at the annual WI conference in London.

Time - the present

## Act 1

- Scene 1 The church hall, autumn
- Scene 2 The following winter
- Scene 3 The following spring
- Scene 4 John's hill, early summer
- Scene 5 The church hall, later that summer
- Scene 6 Night, a few days later

## Act 2

- Scene 1 The WI conference, London
- Scene 2 The church hall, the following day
- Scene 3 A few days later
- Scene 4 A few days later
- Scene 5 Later the same day
- Scene 6 The next day
- Scene 7 Late Summer
- Scene 8 John's hill, half an hour later

There will be an interval of 20 minutes between the two Acts.

We recommend that you beat the rush and pre-order your drinks in the bar prior to the performance.



Chris - Jan Hale



Marie



Jessie - Ann Richards



Annie - Kathy Felton-Aksoy



Lady Cravenshire/Brenda



Celia - Deborah Bloom



Cora - Sian Woolley



Elaine



Ruth - Marilyn Fletcher-Hill

**THERE WILL BE A COLLECTION FOR LEUKAEMIA RE**



Vienna Tyrer



ulse - Kate Hargreaves



ine Cox



John - Giles Davidson



Rod - Pete Slater



Lawrence/Liam - Rob MacGregor



SEARCH AS YOU EXIT THE THEATRE THIS EVENING

Spring, Summer,  
Autumn & Winter...



**THE LIONS SHOP**

You don't need to be a **CALENDAR GIRL** to make a date to visit the Lions Shop to see our modern & retro clothing, furniture, glass & ceramics, ornaments & books

You are very welcome to come and browse in our shop,  
and donations of goods are very welcome too!

The Lions Shop is owned and operated by Southport Lions Club  
and all the profits from the shop go to fund our charitable work -  
about 90% of this is in our local area.

**THE LIONS SHOP**

**664 LIVERPOOL ROAD, AINSDALE, SOUTHPORT, PR8 3LT**

**☎ 01704 577446** **🌐 WWW.THELIONSSHOP.INFO**



**NORTH WEST  
CANCER RESEARCH  
FUND**

HELP US FIND THE CAUSE

**Funding Cancer Research for Over 50 Years**

22 Oxford Street, Liverpool L7 7BL Tel: 0151 709 2919

Charity Reg. No. 223598

# Staging

Director	.....	Margaret Mann
Stage Manager	.....	Chris Ratcliffe
Assistant Stage Manager (Prompt)	.....	Jean Watkinson
Assistant Stage Managers/Crew	.....	Lindsay Haywood, Ceri Powell
Properties	.....	Julie Whelan, Diane Hutchinson, Sue Taylor
Wardrobe	.....	The Cast
Lighting Design	.....	Alan Gosling & Adrian Roberts
Sound Design	.....	Brian Hodge
Set Construction & Design	.....	SDC Construction Team
Scenic Artist	.....	Bob Jessamine
Photographs	.....	Fletcherhill Photography
Programme Editor	.....	Jacquie Bolshaw
Programme Sub Editor	.....	Barry King
Programme Content & Research	.....	Henry James
Programme Layout and Design	.....	Mitchell & Wright (Printers) Ltd

## Music in this production

Various arrangements of *Jerusalem* by William Blake; music by Hubert Parry.

*What a wonderful world* - Bob Thiele and George David Weiss.

*In the Bleak mid-winter* - Gustav Holst.

*Jingle Bells* - James Lord Pierpoint.

*Country Gardens* - Traditional folk dance arranged by Percy Grainger.

*In the hall of the Mountain King* - Edmund Greig.

*The Stripper* - David Rose

*The Jumping Bean* - Robert Farnan

*Fantasia on Greensleeves* - Ralph Vaughan Williams

Incidental music for *Calendar Girls* by Steve Parry

## Acknowledgements

The Director would like to thank:

Latham's Bakery - for making and supplying the buns;

Keith Tyrer - for constructing and supplying the badminton posts and lighting stands;

Debenhams - for discounting the black dresses;

Stuart and Pauline Wharton - for the loan of a wheelchair;

Southport Lions Club - for the loan of Santa's Suit;

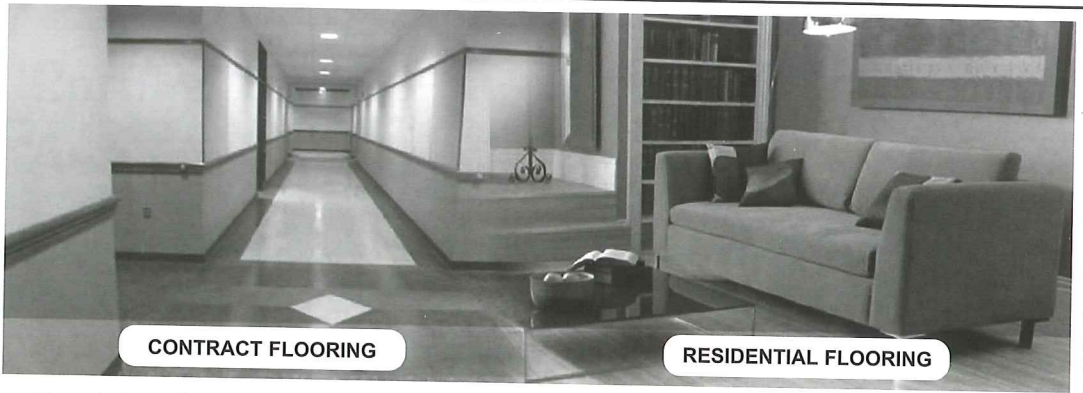
Jan Hale - for the T'ai chi routine

## The Little Theatre - Home of the Southport Dramatic Club.

The SDC wishes to ensure that all our patrons enjoy a comfortable, enjoyable and safe visit to our theatre. We should be grateful for your co-operation in helping us to achieve this. Please note the following:

- Should you arrive after the performance has started, you will be guided to your seats when a suitable opportunity occurs.
- At the end of the performance, exits will be open at both the front and back of the auditorium.
- First Aid assistance is regularly provided by volunteers from the St. John Ambulance Brigade. Should you require help, please advise our stewards on duty in the Foyer.
- Patrons with hearing impairments should note that the auditorium has an Induction Loop System for your assistance. Hearing wands are also available from our stewards.

Designated Premises Supervisor,  
Alan Newport



**Specialists in all Business Applications**

- Carpet for Offices
- Vinyl and Linoleum
- WCs and Kitchens
- Wet areas
- Safety Flooring
- Sports Surfaces
- Entrance Systems
- Hardwood Flooring

*Amico*

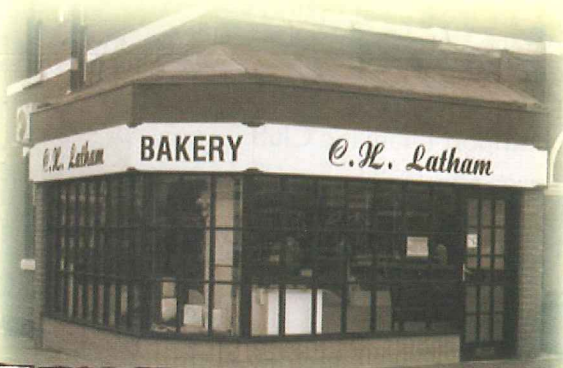
**Tarkett**



 **West Lancashire  
Flooring Limited**

74 Ormskirk Business Park, New Court Way,  
Ormskirk, Lancashire L39 2YT  
T: 01695 578369 F: 01695 570623  
admin@wlflooring.co.uk  
www.wlflooring.co.uk

*C. H. Latham*  
- Southport -



**Traditional Family Bakers**  
**Baking Excellence Since 1967**

**BRANCHES AT:-**

129 Rufford Road,  
Crossens

Tel: Southport 225933

86 Oak Street, Southport

Tel: Southport 537929

145 Roe Lane, (Lane Ends)  
Southport

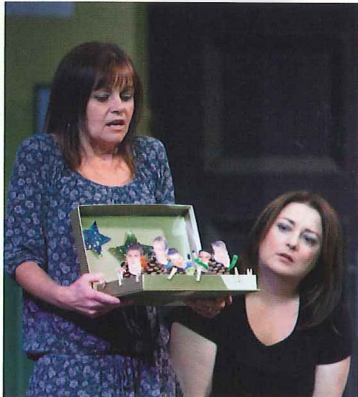
Tel: Southport 227040

35c Liverpool Road,  
Birkdale

Tel: Southport 562106

4 Mark Square,  
Tarleton PR4 6TU

Tel: 01772812722



# YOUR LOCAL FRIENDLY SOLICITORS

**Maxwell  
Hodge**

**SOLICITORS**

Provide a fast and efficient service for

- Wills
- Probate
- Court of Protection
- Conveyancing
- Powers of Attorney



michaelyates@maxweb.co.uk  
01704 872156

Appointments at our local office and home visits can be arranged please call Michael Yates.

[www.maxwellhodge.co.uk](http://www.maxwellhodge.co.uk)

**Aintree**

0151 526 9321

**Formby**

01704 872 156

**Heswall**

0151 342 6447

**Huyton**

0151 489 6161

**Kirkby**

0151 548 7370

**Maghull**

0151 526 7131

**West Kirby**

0151 625 9154

**Liverpool (city)**

0151 227 4545

## Birkdale Boutique

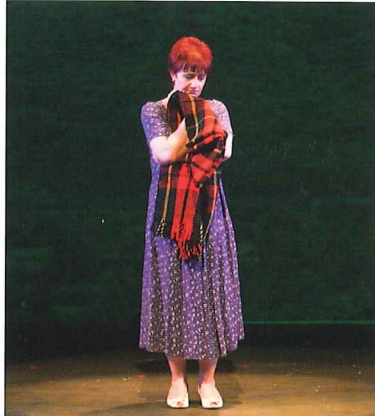
5 Weld Parade,  
Birkdale Village,  
Southport PR8 2DT  
Tel: 01704 569697

Bianca  
Doris Streich  
Emreco  
Frank Walder  
Habella  
Lebek  
Olsen  
Poppy  
Signature  
Steilmann



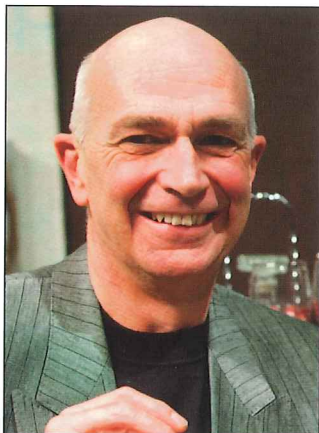
[www.birkdaleboutique.co.uk](http://www.birkdaleboutique.co.uk)





## Trivia Teaser for Calendar Girls Programme

1. How many W.I. Members posed in the nude for the original calendar?
2. What is the anthem of the W.I.?
3. What flowers did John grow?
4. What is the name of the small village W.I. group where the original calendar was made?
5. In 2005, at Clarence House, who personally thanked the original Calendar Girls for their achievements?



**Steve Pritchard**  
**Director**

# NOW IN REHEARSAL

## **Dangerous Corner**

26th October - 3rd November 2012

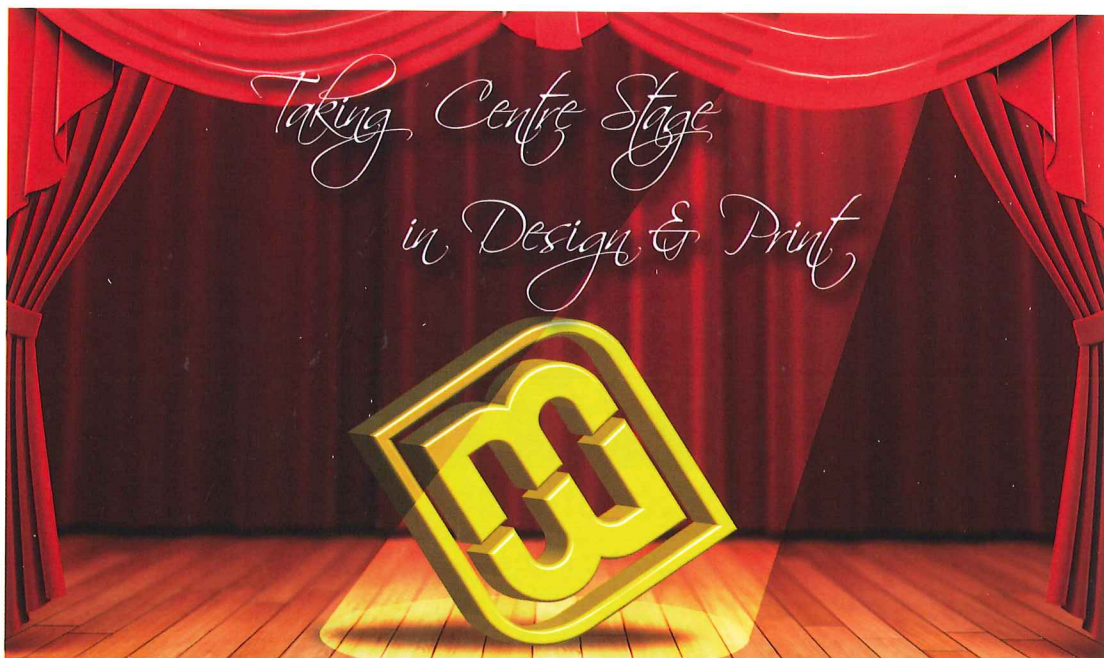
by **J.B. Priestley**  
directed by **Steve Pritchard**

The second play of the season is J.B.Priestley's 'Dangerous Corner' and I am delighted to be directing at the SDC for the first time. Since becoming a member 14 years ago I have worked with many of the club's directors, both on and off the stage, gaining insight into the work involved to get plays ready for the stage. Having previously directed Gilbert & Sullivan operettas I have been nurturing the desire to direct a play for the SDC and am delighted to have been given this opportunity.

J.B.Priestley is one of the finest British playwrights of the 20<sup>th</sup> century and GCSE students currently study his best know play 'An Inspector Calls'. 'Dangerous Corner' has similar elements. None of the characters are what they seem on the surface and all have secrets and lies which are exposed as the plot unravels, leaving audiences intrigued but above all thoroughly entertained. We have assembled a fine cast of actors to do justice to this brilliant play and I sincerely hope you enjoy our combined efforts.

Thank you for your continued support

**Steve Pritchard, Director**



*Taking Centre Stage  
in Design & Print*

 **mitchell&wright**  
**printers limited**

**Tel: 01704 535529**  
sales@mitchellwright.co.uk  
www.mitchellwright.co.uk

COMING SOON  
to the Little Theatre  
Home of the Southport Dramatic Club



**Birkdale  
Orpheus  
Society**

Box Office Opens:  
29th Sept 2012  
Advance bookings  
01704 564042

6th - 13th October 2012

# Me and My Girl

Music by Noel Gay, book and lyrics by L. Arthur Rose and  
Douglas Furber, book revised by Stephen Fry.

Matinee - Saturday 13th October 2012

**SDC  
Production**



Box Office Opens:  
14th Sept 2012  
at 11.00am

26th October - 3rd November 2012

# Dangerous Corner

A tale of Intrigue, Secrets, Passions and Lies

By J.B. Priestley

Directed by Steve Pritchard

**Maghull  
Musical  
Theatre  
Company**

Box Office Opens:  
31st Oct 2012

7th - 10th November 2012

# Annie

Music by Charles Strouse, lyrics by Martin Charnin,  
book by Thomas Meehan

By arrangement with Josef Weinburger Ltd.  
on behalf of Music Theatre International of New York.

**SDC  
Production**



Box Office Opens:  
16th Nov 2012  
at 11.00am

23rd November - 1st December 2012

# The 39 Steps

From the novel by John Buchan, based on Alfred Hitchcock's  
film, adapted by Patrick Barlow

Directed by James Hughes-Alty

**SDC  
Production**



Box Office Opens:  
22nd Oct 2012  
at 11.00am

19th December 2012 - 6th January 2013

# Goldilocks & the Three Bears

SDC's Family Pantomime

By John Morley

Directed by Sandy Town

**Party bookings NOW!  
on 01704 504800**

Box Office Tel: (01704) 530521/530460

[www.littletheatresouthport.co.uk](http://www.littletheatresouthport.co.uk) Houghton Street, Southport PR9 0PA

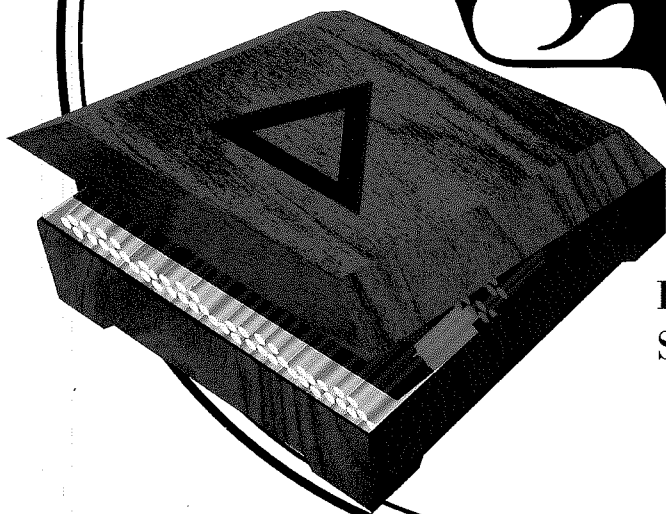
**NO BOOKING FEES OR CARD CHARGES**

A Tale of Intrigue,  
Secrets, Passions & Lies

# Dangerous

Written by J.B. Priestley

# Corner



Directed by  
Steve Pritchard

26th October - 3rd November 2012

7.45pm

  
**LITTLE THEATRE**  
Home of the  
Southport Dramatic Club

No booking  
charges or card fees



Box Office Opens: 19th Oct 2012 at 11.00am

Box Office Tel: (01704) 530521/530460

[www.littletheatresouthport.co.uk](http://www.littletheatresouthport.co.uk) Hoghton Street, Southport PR9 0PA



Like us on  
facebook