

# Southport Dramatic Club

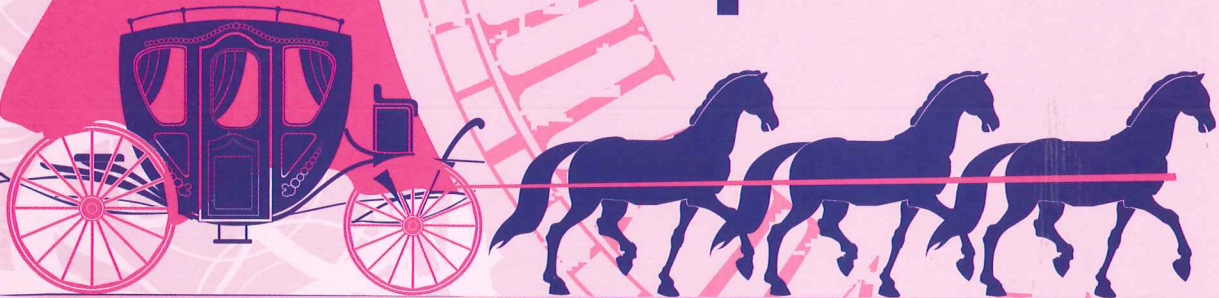
Specially written  
and directed  
by Stephen Hughes-Alty

Musical direction  
by Paul Williams

Choreography  
by Pippa Morris

# Cinderella

21st December 2011 -  
8th January 2012



Sponsored by



  
**LITTLE THEATRE**  
Home of the  
Southport Dramatic Club

Concessions for groups,  
children and senior citizens

Box Office Opens: 24th October 2011 at 11am

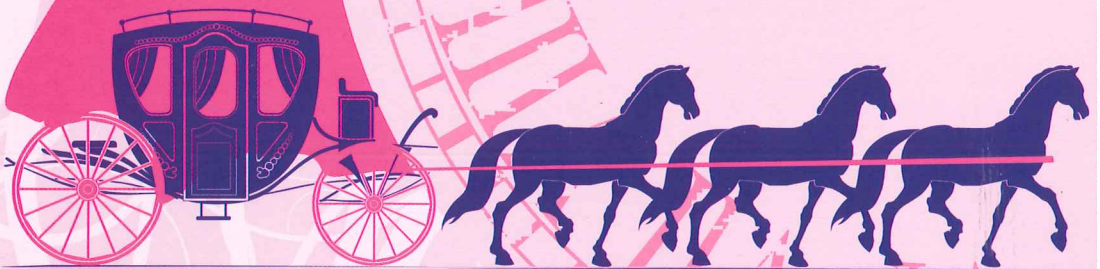
Box Office Tel: (01704) 530521/530460

[www.littletheatresouthport.co.uk](http://www.littletheatresouthport.co.uk) Houghton Street, Southport PR9 0PA



**NatWest**

**The whole team at  
Southport Business Centre  
are delighted to be  
supporting this festive  
production once again**



**Merry Christmas  
and a Happy New Year**

# Director's notes

It is with great pleasure I return to write and direct the Southport Dramatic Club's annual pantomime. *Cinderella* is perhaps one of the most well-known fairy tales so it has been a challenge translating it for the stage. We wanted to stay true to the original story but at the same time bring something new and fresh to the production. So don't be surprised when you see a Fairy with 'L' plates, hear a 'mash-up' that wouldn't sound out of place on an episode of 'Glee' and spot a special appearance from not one but TWO Lady Ga-Gas!

I would like to thank the many people who have helped create the spectacle you are about to see. There are far too many to name: from the



**Stephen Hughes-Alty**  
Director

backstage crew to the box office staff, the productions committee to the publicity team and everyone else in-between. I am grateful for the usual hard work and dedication which keeps this theatre vibrant and alive!

Special thanks must go to our musical director, Paul Williams, a maestro who so generously gives of his time and talent to ensure the best possible outcome. Special thanks also to Pippa Morris, a choreographer with vision and drive who has created some spectacular routines for your delight. I must also thank my most committed cast who not only have worked harder than I dared to hope for but did it with a smile and enthusiasm.

Finally, I would like to thank you, our audience. You have chosen to turn off the television, leave the comfort of your homes and venture out to experience live theatre. We hope we don't disappoint.

*Stephen Hughes-Alty*  
Director



**Paul Williams**  
Musical Director



**Pippa Morris**  
Choreographer



## Pre Theatre Dinner

# 10% off your final bill

when theatre ticket is shown

**we are opposite the  
Little Theatre on Hoghton Street**

Lite Bites Served Mon - Sat 11.00 - 2.30

Sunday Tapas In Bar 12.00 - 6.00

with Restaurant Serving

From 12.00 till 7.00

TDH & A La Carte Served

Tues - Sat 5.30 till 9.30

& Sunday 12.00 till 7.00

For Bookings Telephone: 543354

9b Hoghton Street . Southport . PR9 0TE

# Stephen Hughes-Alty

Stephen Hughes-Alty is an active member of the SDC and co-ordinator of our hugely successful and thriving Youth Theatre. He started his career as assistant manager in a bookshop before studying drama and theatre studies at the University of Kent in Canterbury. From there he worked in professional theatre for many years both as an actor, director and writer working with a diverse range of professionals ranging from Norman Wisdom to Sir Ian McKellen.

His passion for all things theatrical led to him studying to become a drama teacher. Until



**Stephen Hughes-Alty**

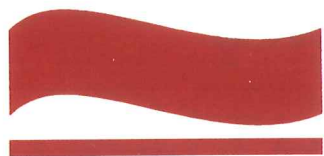
Author

recently he was Advisory Teacher for Dance and Drama for Wigan Local Authority. He was responsible for raising attainment in the arts in over 120 schools. He now has his own company 'Spark of Creation' which

specialises in creating innovative workshops and performances for schools across the Northwest.

*Cinderella* is one of many pantomimes that Stephen has written and directed especially for the Southport Dramatic Club. His previous shows have included *Dick Whittington*, *Mother Goose* and *Beauty and the Beast*. He also writes plays and musicals for children and young people and he is co-author of popular performing arts text book *Think Ahead: Drama*.





West Lancashire  
Flooring Limited

74 Ormskirk Business Park  
New Court Way  
Ormskirk  
Lancashire L39 2YT  
Tel: 01695 578369  
Fax: 01695 570623

Email: [admin@wlflooring.co.uk](mailto:admin@wlflooring.co.uk)

## CONTRACT & DOMESTIC FLOORING SPECIALISTS

Decorative Vinyls/Linoleum  
Carpets ~ Hardwood Flooring  
Stripwood ~ Blockwood ~ Parquet



Our customers say...

*"Aladdin's Cave" "Best little shop in town"*

# Streets Ahead

*Supporting*

**Alder Hey Children's Hospital  
Imagine Appeal**

49 Eastbank Street, Southport, PR8 1DY  
Telephone: 01704 533377 Mobile: 07758 601124

**First-class second-hand affordable goods**

**We sell anything & everything (including the kitchen sink)!!**

**Have you discovered us yet?!**

# The History of Cinderella

*Cinderella* is one of the most recognised stories around the world. The themes from the story appear in the folklore of many cultures. Sources disagree about how many versions of the tale exist, with numbers ranging from 340 to over 1,500 if all of the picture book and musical interpretations are included. The tale has its own Arne Thompson classification which is 510A. The tale always centres on a kind, but persecuted heroine who suffers at the hands of her step-family after the death of her mother. Her father is either absent or neglectful, depending on the version. The heroine has a magical guardian who helps her triumph over her persecutors and receive her fondest wish by the end of the tale. The guardian is sometimes a representative of the heroine's dead mother. Most of the tales include an epiphany sparked by an article of clothing (usually a shoe) that causes the heroine to be recognized for her true worth.

The earliest recorded version of the tale comes from China. It was written down by Tuan Ch'eng-shih

in the middle of the ninth century A.D. (850-60 Common Era). The tone of the story implies that its readers and listeners were already well-acquainted with the story by the time it was written down. The heroine of the Chinese tale is Yeh-shen. There is no fairy godmother in this earliest known version. A magical fish is Yeh-shen's helper instead. However, a golden shoe is used to identify Yeh-shen to the prince who wants to marry her.

Although a reference to the story exists in 16th century German literature, the next written version of the story comes from Charles Perrault in his *Contes de ma Mere l'Oye* in 1697. From this version, we received the fairy godmother, the pumpkin carriage, the animal servants, and the glass slippers. Perrault recorded the story that was told to him by storytellers while adding these touches for literary effect. Some scholars think Perrault confused "vair" (French for "ermine or fur") with "verre" (French for "glass") to account for Cinderella's admittedly uncomfortable footwear. This theory has been widely discredited

now. Most scholars believe Perrault intended glass slippers as Cinderella's footwear. Perrault's version has a more humane ending than many versions of the tale with Cinderella finding husbands for her sisters. The sisters are left poor, blind, maimed, or even dead in many versions of the tale.

The Grimm Brothers' German version, known as *Aschenputtel*, or *Ash Girl*, does not have a fairy godmother. The heroine plants a tree on her mother's grave from which all of the magical help appears in the form of a white dove and gifts. At the end, the stepsisters' eyes are pecked by birds from the tree to punish them for their cruelty. Perrault's version is considerably more forgiving than this version.

In modern times, the tale of *Cinderella* has inspired countless picture books, musicals, novels, and dreams of little girls. We hope you enjoy the version written by our own Stephen Hughes-Alty and performed by his extremely talented cast.

# YOUR LOCAL FRIENDLY SOLICITORS

**Maxwell  
Hodge**

**SOLICITORS**

Provide a fast and efficient service for

- Wills
- Probate
- Court of Protection
- Conveyancing
- Powers of Attorney



michaelyates@maxweb.co.uk  
01704 872156

Appointments at our local office and home visits can be arranged please call Michael Yates.

[www.maxwellhodge.co.uk](http://www.maxwellhodge.co.uk)

**Aintree**

0151 526 9321

**Formby**

01704 872 156

**Heswall**

0151 342 6447

**Huyton**

0151 489 6161

**Kirkby**

0151 548 7370

**Maghull**

0151 526 7131

**West Kirby**

0151 625 9154

**Liverpool (city)**

0151 227 4545



## **NORTH WEST CANCER RESEARCH FUND**

HELP US FIND THE CAUSE

**Funding Cancer Research for Over 50 Years**

22 Oxford Street, Liverpool L7 7BL Tel: 0151 709 2919

Charity Reg. No. 223598



# Synopsis of Scenes

## ACT ONE

Prologue – The Fairy Realm, above the clouds.

Scene One – The Town Square in Ruritania.

Scene Two – A Forest Glade

Scene Three – Elsewhere in the Forest

Scene Four – Whitney and Britney's Boudoir

Scene Five – The Kitchen at Hardup Hall

## ACT TWO

Scene One – The Royal Ballroom

Scene Two – The Haunted Wood

Scene Three – Back in the Kitchen

Scene Four – The Songsheet

Scene Five – The Royal Wedding



### The Little Theatre Home of the Southport Dramatic Club.

The SDC wishes to ensure that all our patrons enjoy a comfortable, enjoyable and safe visit to our theatre. We should be grateful for your co-operation in helping us to achieve this. Please note the following:

- Should you arrive after the performance has started, you will be guided to your seats when a suitable opportunity occurs.
- At the end of the performance, exits will be open at both the front and back of the auditorium.

- First Aid assistance is regularly provided by volunteers from the St. John Ambulance Brigade. Should you require help, please advise our stewards on duty in the Foyer.
- Patrons with hearing impairments should note that the auditorium has an Induction Loop System for your assistance. Hearing wands are also available from our stewards.

Designated premises Supervisor, Alan Newport



# Cinderella

## Cast

(in order of appearance)

Queen Mab, ruler of the fairy folk.....Hilary Thomson  
 Fairy Fluff, her less-able assistant .....Natalie Fletcher  
 Cinderella, our hapless heroine .....Beth Milligan  
 Baron Hardup, her penniless father.....Arnold Gorse  
 Baroness Hardup, his scheming wife .....Pat Ball  
 Buttons, servant to the Hardups .....John Delahunty  
 Whitney, Cinderella's step-sister .....James Hughes-Alty  
 Britney, Cinderella's other step-sister .....Rob MacGregor  
 Queen Prudence, ruler of Ruritania .....Mandy Evans  
 Lady Jane, the Queen's maid.....Heather Gomersall  
 Prince Charming, our handsome hero .....Phil Hunter  
 The Major Domo, a lacklustre lackey .....Peter Forshaw  
 The Wailing Banshee, a sinister spectre .....Peter Bruce



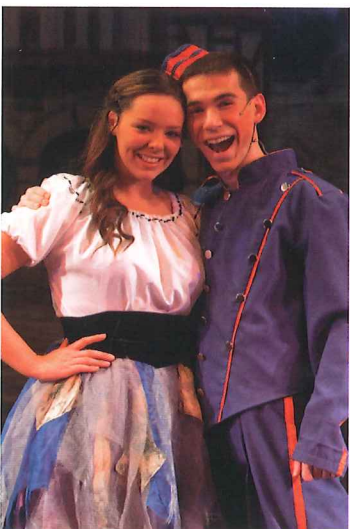
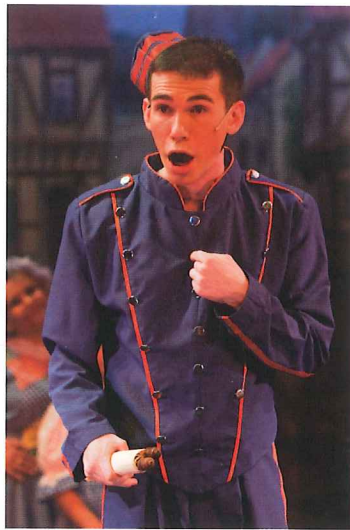
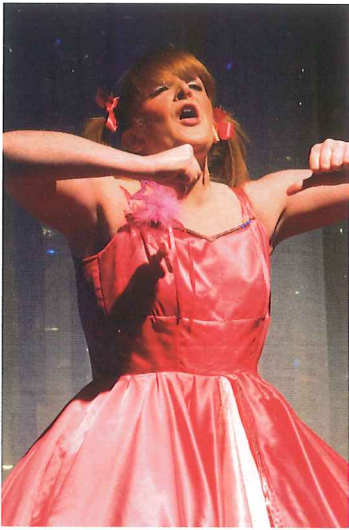
# Cinderella

## Ensemble

Sarah-Louise Alty, Gillian Bruce, Peter Bruce,  
Emma Dinsdale, Zoe Findlay, Robbie Fletcher-Hill,  
Jennifer Gail Galbraith, Georgina Gillen, Heather Gomersall,  
Hayleigh Griffin, Patricia Hodgson, Tom Johnson,  
Rokiah Khan, Jamie Lonsdale, Joshua Malone,  
Mari-Claire Malone, Aoife McCann-Jackson, Alan Morris,  
Yasmin Paul, Stephanie Seddon, Fern Ward

## Children

Lucy Cropper, Anita Gillen, Joe Gillen,  
Bethany Griffin, Chloe Morris, Chris Morris



# Staging

## Production Team

Director ..... Stephen Hughes-Alty  
Musical Director ..... Paul Williams  
Choreographer ..... Pippa Morris

## Crew

Stage Manager ..... Colin Haynes  
Prompt/Rehearsal Matron ..... Sue Palmer  
Wardrobe ..... Sherel Coley, Margaret Horne,  
James Hughes-Alty  
Uglies Wigs ..... Katie Doyle  
Lighting ..... Syd Coley  
Sound ..... Bernie Howat  
Props ..... Sandy Town and the SDC Team  
UV Scene ..... Colin Alty and Stephen Hughes-Alty  
Scenic Artist ..... Bob Jessamine  
Photographs ..... Fletcherhill Photography  
Programme Editor ..... Jacquie Bolshaw  
Programme Content & Research ..... Sallyanne Smerdon  
Programme Layout and Design ..... Mitchell & Wright (Printers) Ltd

## Band

Piano ..... Paul Williams  
Reeds ..... Phil Hopkins  
Percussion ..... Michael McKay

## Musical Numbers

### ACT ONE

Downtown ..... Cinderella and the townsfolk  
Enjoy Yourself ..... Buttons, Cinderella, Baron Hardup and the townsfolk  
Sisters ..... Whitney and Britney  
Find My Princess ..... Queen Prudence, Prince Charming and Lady Jane  
Soon ..... Cinderella  
A Spoonful of Sugar ..... Buttons, Cinderella and the townsfolk  
If You Can Dream ..... Cinderella and Prince Charming  
The Court of King Caractacus ..... Whitney, Britney and Buttons  
Make 'em Laugh ..... Buttons  
Anything Can Happen ..... Queen Mab, Fairy Fluff and the Fairy Chorus

### ACT TWO

Disco Medley ..... Queen Prudence, The Major Domo and guests  
The Uglies Mash-Up ..... Whitney, Britney and the Uglettes  
I Can See The Light ..... Cinderella and Prince Charming  
Not While I'm Around ..... Baron Hardup  
Colour My World ..... The Company  
Bop-Bop-Boogie ..... Buttons and Fairy Fluff  
Colour My World (reprise) ..... The Company

## Acknowledgements

The director would like to thank:  
Pizza Hut and Spar for their help and assistance

# *Cathy Milner* Birkdale Boutique

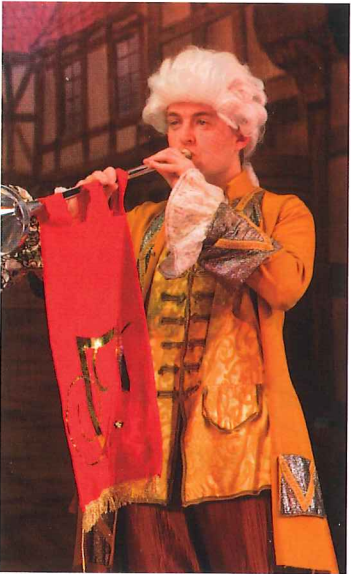
A relaxed and informal shopping experience offering an extensive collection of stylish ladies fashions and accessories

Doris Streich • Emreco • Evalinka  
Frank Walder • Gelco • Habella  
Lebek • Oscar B • Pomodoro  
Poppy • Signature • Steilmann

---

5 Weld Parade, Birkdale Village, Southport PR8 2DT  
Tel: 01704 569697 [www.birkdaleboutique.co.uk](http://www.birkdaleboutique.co.uk)





BALLET  
MODERN  
JAZZ



BALLROOM  
NATIONAL  
TAP

Principals: Miss Bamber & Mrs. P. Morris  
(AISTD, MB, NB, TB, BB) Registered RAD

# *Loreto Bamber* **Dancing Academy**

Do you want to learn to dance?

Courses available for everyone

All ages welcome from 2 1/2 years

All standards catered for from beginner to advanced level.

Fun tap and jazz for adults.

**Studio at:**

**New Temple, Castle Street,**

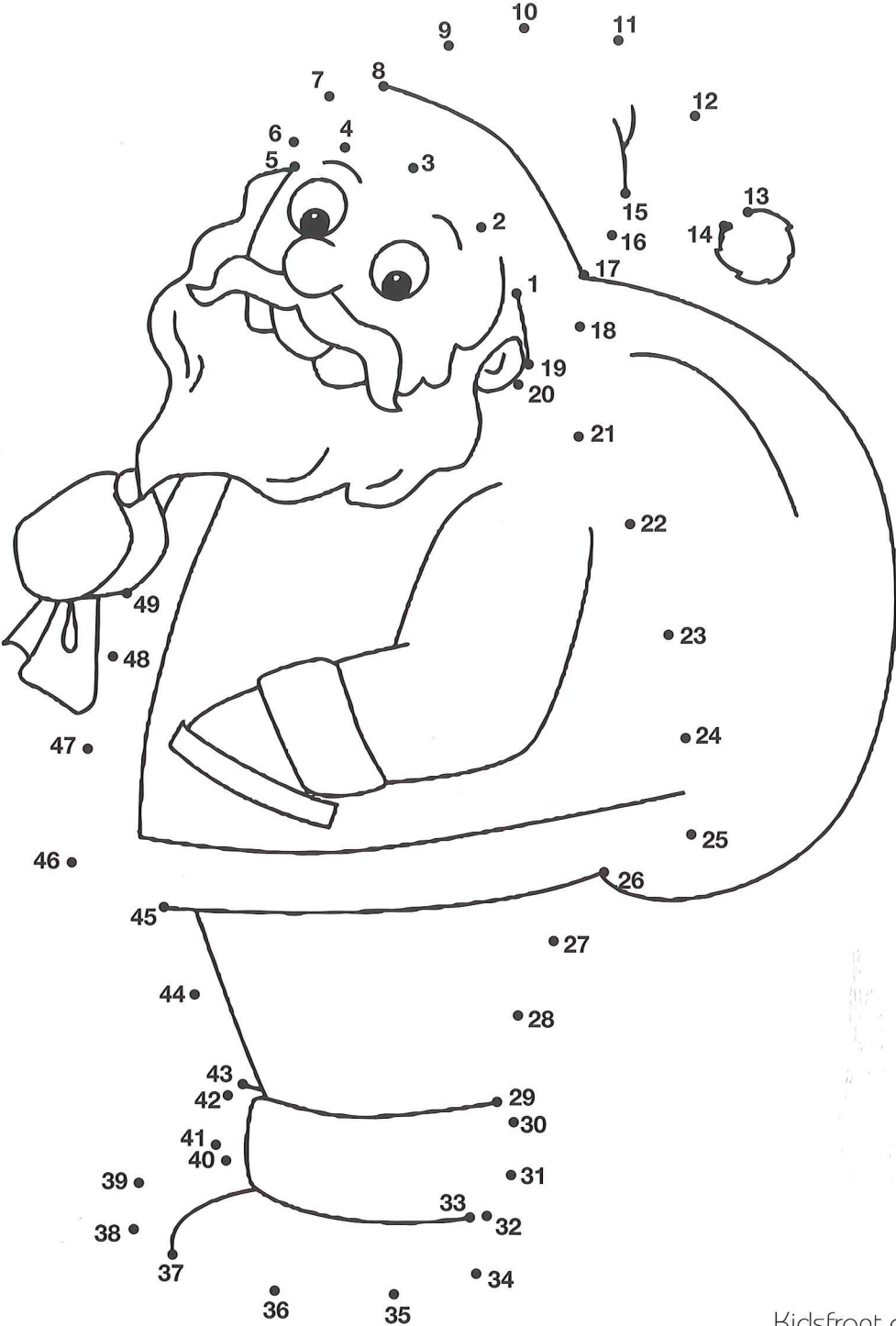
**Southport**

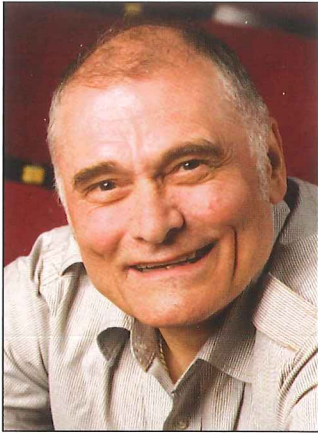
**and St. Johns, Ainsdale**

**Telephone: 01704 538351**



# Can you guess who this is?





**Les Gomersall**  
Director

# NOW IN REHEARSAL

## The Titfield Thunderbolt

A play by Philip Goulding

Based on the original Ealing comedy screenplay  
by T. E. B. Clarke

Directed by Les Gomersall

SDCs next production "*The Titfield Thunderbolt*" is now well into rehearsal and is being thoroughly enjoyed by the cast.

This stage version of the well known Ealing film comedy promises to be great fun, recounting the efforts of a small, but determined, number of villagers fighting to prevent the local train line from closing.

Hope to see you when trains leave platform one at 7.45 from 27 January 2012 to 4 February 2012 (excluding Sunday) Enjoy the trip

# Don't make a song and dance out of printing



**mitchell&wright**  
printers ltd

Tel: 01704 535529 - Email: [sales@mitchellwright.co.uk](mailto:sales@mitchellwright.co.uk)

COMING SOON  
to the Little Theatre  
Home of the Southport Dramatic Club



SDC  
Production



Box Office Opens:  
20th January 2012 at 11.00am

27th January - 4th February 2012  
**The Titfield  
Thunderbolt**  
A comedy by Philip Goulding  
Directed by Les Gomersall

Birkdale  
Orpheus  
Society  
Production

26th May - 2 June 2012  
**The Sound of  
Music**  
Music by Richard Rodgers  
Lyrics by Oscar Hammerstein II  
By arrangement with Josef Weinburger Ltd

Box Office Opens:  
19th May 2012  
Advance bookings  
01704 564042

SDC  
Production



Box Office Opens:  
17th February 2012 at 11.00am

24th February - 3rd March 2012  
**Emma**  
A play by Gordon Glennon from  
the novel by Jane Austen  
Directed by Margaret Mann

SDC  
Studio Production



5th - 9th June 2012  
SDC's Bar/Studio Production  
**To Be Announced**

Box Office Opens:  
28th May 2012 at 11.00am

Too Friendly  
Theatre  
Company  
Production

8th - 10th March 2012  
**Absurd Person  
Singular**  
By Alan Ayckbourn

Box Office Opens:  
1st March 2012  
Advance bookings  
01704 227245

Maghull  
Musical Theatre  
Company  
Production

13th - 16th June 2012  
**Jekyll & Hyde**  
Book and lyrics by Leslie Bricusse  
Music by Frank Wildhorn  
By arrangement with Josef Weinburger Ltd

Box Office Opens:  
6th June 2012  
Advance bookings  
01695 632372

SDC Youth Theatre  
Production



21st - 24th March 2012  
**Our Day Out**  
A play by Willy Russell  
Directed by Stephen Hughes-Alty

Box Office Opens:  
12th March 2012 at 11.00am

Old Hall Brass  
Production

17th June 2012  
**An Evening of  
Music with  
Old Hall Brass**

Advanced bookings  
01942 715684

SDC  
Production



Box Office Opens:  
6th April 2012 at 11.00am

13th - 21st April 2012  
**Proscenophobia  
(Stage Fright)**  
A "who-dunnit" thriller by Bettine Manktelow  
Directed by Hilary Thomson  
Sponsored by Master Lock & Safe

Loreto  
Bamber Dance  
Academy  
Production

22nd - 23rd June 2012  
**Dance Summer  
Show**

Box Office Opens:  
21st June 2012  
Advance bookings  
01704 538351

SDC  
Production



Box Office Opens:  
27th April 2012 at 11.00am

4th - 12th May 2012  
**The Dangers of  
Tobacco**  
A comedy written and directed  
by Alistair Hewitt  
Sponsored by Mitchell & Wright Printers Ltd

Southport  
Spotlight  
Musical Theatre  
Society  
Production

30th June - 7th July 2012  
**The Producers**  
Book by Mel Brooks and Thomas Meehan  
Music and Lyrics by Mel Brooks  
by arrangement with Josef Weinburger Ltd

Box Office Opens:  
25th June 2012  
Advance bookings  
01704 228936



Box Office Tel: (01704) 530521/530460  
www.littletheatresouthport.co.uk Houghton Street, Southport PR9 0PA

# The Titfield Thunderbolt

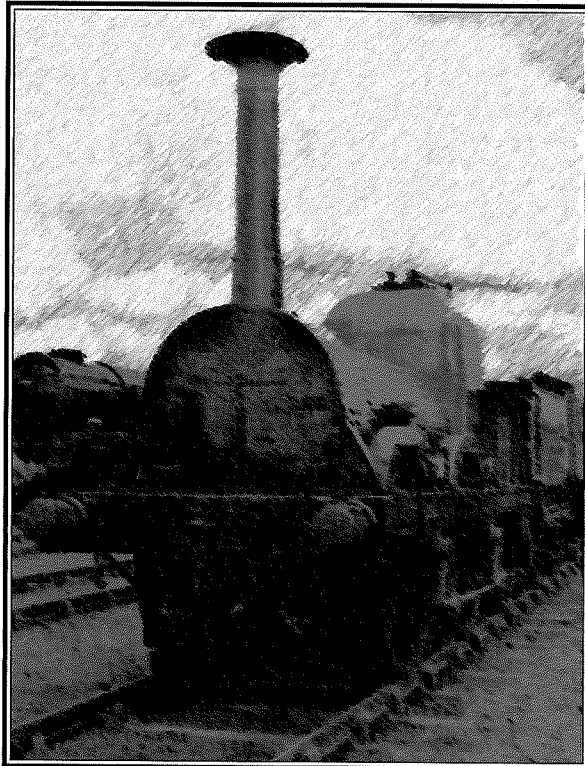
27th January - 4th February 2012  
7.45pm

## IMPORTANT NOTICE

The passenger train service between Titfield Station and Mallingford Junction will be permanently withdrawn on and from Saturday, the 21st June, 1952, and accordingly the public is hereby given notice of closure.

## VERY IMPORTANT NOTICE

An alternative passenger Omnibus Service will be operated by Crump and Son Road Transport Company (incorporating the Titfield Road Transport Company) servicing the area formerly covered by the railway.



A play by  
Philip  
Goulding

Based on the  
original Ealing  
comedy  
screenplay by  
T. E. B. Clarke

Directed by  
Les  
Gomersall

Box Office  
Opens:  
20th January  
2012 at 11am



**LITTLE THEATRE**  
Home of the  
Southport Dramatic Club

Box Office Tel: (01704) 530521/530460

[www.littletheatresouthport.co.uk](http://www.littletheatresouthport.co.uk) Houghton Street, Southport PR9 0PA