



**LITTLE THEATRE**

Home of the  
Southport Dramatic Club  
Presents



# SEASON'S GREETINGS

Sir Alan Ayckbourn's  
Festive comedy cracker

Directed by Stephen Hughes-Alty

**21st - 29th November 2008**

*This production  
includes gunshots*

**7.45pm**



Box Office Tel: (01704) 530521/530460 Fax: (01704) 546782  
Hoghton Street, Southport PR9 0PA. [www.littletheatresouthport.co.uk](http://www.littletheatresouthport.co.uk)



# YOUR COMPLETE LEGAL TEAM...

- Accident Claims
- Clinical Negligence
- Matrimonial & Family Law
- Lifetime Planning
- Wills, Probate & Trusts
- Commercial Property
- Company & Business Law
- Buying or selling your home
- Debt Collection
- Employment Law
- Dental & Medical Practitioners
- Workplace Illness

Please call **Michael Yates**

## 01704 872156

Turret House, 3 Chapel Lane, Formby, L37 4DL

*also offices at*

Maghull · Aintree · Huyton · Kirkby · Liverpool (City) · Heswall · West Kirby

[www.maxwellhodge.co.uk](http://www.maxwellhodge.co.uk)

**Maxwell**  
SOLICITORS **Hodge**



**West Lancashire  
Flooring Limited**

74 Ormskirk Business Park  
New Court Way  
Ormskirk  
Lancashire L39 2YT  
Tel: 01695 578369  
Fax: 01695 570623

Email: [admin@wlflooring.co.uk](mailto:admin@wlflooring.co.uk)

## CONTRACT & DOMESTIC FLOORING SPECIALISTS

Decorative Vinyls/Linoleum  
Carpets ~ Hardwood Flooring  
Stripwood ~ Blockwood ~ Parquet

**Amico**



**Tarkett**



# Director's notes

Welcome to the Bunker household. You have just arrived for Christmas Eve dinner. Over the next few days you are going to witness a dysfunctional, yet oddly average, family experience a darkly comic festive season they will never forget. Gun-wielding old eccentrics, dangerous liaisons under the perfectly decorated tree and a puppet show of epic proportions all add to Christmas chaos.

It has been quite a challenge translating Ayckbourn's text to the stage. Thankfully I am blessed with an immensely talented cast who have given up time preparing for their own Christmas festivities to breathe life into these complex characters. I am indebted to them all for their hard work and dedication.

I must also thank an incredibly diligent group of people who have helped to 'build' the Bunker house: Syd for the bricks and mortar; Gay and Julie for furnishing it so beautifully; Chris for giving them a great sound system and Colin and James for helping Bernard out with his puppet play. I must also say a special thank you to Jan Hale who volunteered to shadow me on this play and her assistance has been invaluable.

In many ways, *Season's Greetings* is a sad story about thwarted ambitions, unhappiness in relationships and petty squabbles at a supposedly happy time of year. For that, its achievement is all the more pronounced because it is frequently hilarious and even light-hearted in its exposure of human frailties and inadequacies. We hope you enjoy watching it as much as we have enjoyed working on it.

All that remains is to wish you...Season's Greetings!




Stephen Hughes-Alty  
Director

Stephen Hughes-Alty  
Director







for a Truly  
outstanding  
performance

*come to...*



 **mitchell&wright**

*COLOUR in PRINT*

Telephone **01704 535529** or Email [sales@mitchellwright.co.uk](mailto:sales@mitchellwright.co.uk)



## **NORTH WEST CANCER RESEARCH FUND**

HELP US FIND THE CAUSE

**Funding Cancer Research for Over 50 Years**

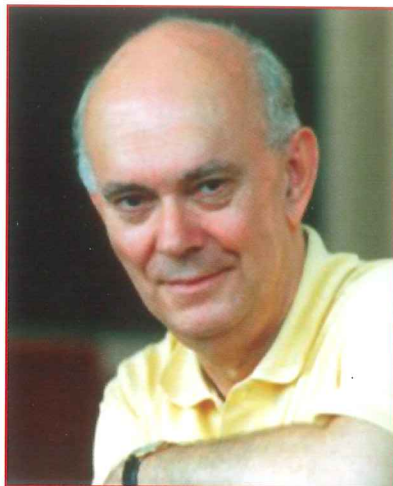
22 Oxford Street, Liverpool L7 7BL Tel: 0151 709 2919

Charity Reg. No. 223598



# Sir Alan Ayckbourn

Alan Ayckbourn was born in London in 1939 and has worked in theatre all his life. Before establishing himself as a writer and director, Alan worked in roles as various as stage manager, sound technician, lighting technician, scene painter, prop maker and actor. He always claims that most of these talents he developed with the help of Stephen Joseph, his mentor and founder of the Library Theatre in Scarborough who first encouraged him to write. One of Alan's greatest achievements was the establishment of a permanent home for the company of which he has been artistic director since 1972 - the Stephen Joseph Theatre. This splendid two-auditoria arts complex opened in 1996. Probably one of the nation's most performed living playwrights, Alan Ayckbourn has written 72 plays, almost all receiving their first performance in Scarborough. Among his successes are: *How The Other Half Loves*, *Absurd Person Singular*, *The Norman Conquests*, *Bedroom Farce*, *Just Between Ourselves*, *A Chorus of Disapproval*, *Woman in Mind*, *A Small Family Business* and *Comic Potential*. More than 35 have been produced in the West End or at the National Theatre since his first hit. *Relatively Speaking*, opened at the Duke of York's Theatre in 1967.



Sir Alan Ayckbourn  
Author

His plays have been translated into 35 languages, have won numerous national and international awards and are performed on stage and television throughout the world. They have been filmed in English and French, the most recent, *Coeurs*, Alain Resnais' adaptation of *Private Fears in Public Places* winning that great film director the Silver Lion Award at the 2007 Venice Film Festival. Alan's book, *The Crafty Art of Playmaking*, published by Faber in 2002 has, to date, been published in Germany, Spain, Sweden and the US. The holder of a number of honorary degrees, he is also the recipient of a Montblanc de la Culture Award for Europe and a Sunday Times Award for Literary Excellence. A Fellow of the RSA, he was appointed a CBE in 1987 and in 1997, was knighted for services to the theatre.

Alan Ayckbourn will step down as Artistic Director of the **Stephen Joseph Theatre** at the climax of the 2008 autumn season.

Biography supplied by Alan Ayckbourn's official website [www.alanayckbourn.net](http://www.alanayckbourn.net)





Tree Tops

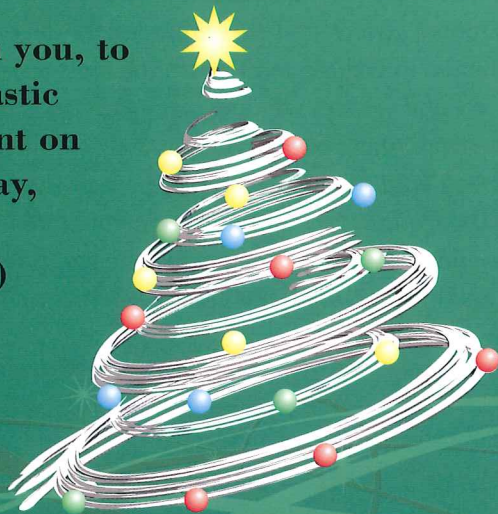


Early Christmas Present from  
Tree Tops

**£5.00**  
**Gift Voucher**

Bring this gift voucher with you, to take advantage of this fantastic special offer. £5.00 discount on all menus available Thursday, Friday & Saturday Night (excluding 28th November)  
1 voucher per person

Commencing  
21st November 08 -  
20th December 08



Southport Old Road, Formby, Merseyside L37 0AB  
Tel: 01704 572430 Email: [sales@treetopsformby.fsnet.co.uk](mailto:sales@treetopsformby.fsnet.co.uk)  
[www.treetopsformby.co.uk](http://www.treetopsformby.co.uk)



# SEASON'S GREETINGS

## from 1987

### Season's Greetings

by ALAN AYCKBOURN

Directed by Lesley Winsland

#### CAST

NEVILLE ... .. DAVID PARRY  
BELINDA, his wife ... .. JAN MURRAY  
PHYLLIS, his sister ... .. JUDY HALL  
HARVEY, his uncle ... .. EDDIE KERSHAW  
BERNARD, Phyllis's husband ... .. DEREK HORNE  
RACHEL, Belinda's sister ... .. MARGARET TARPEY  
EDDIE ... .. SIMON FIELDHOUSE  
PATTIE, Eddie's wife ... .. DANA SLATER  
CLIVE ... .. MARK BRAITHWAITE

#### STAGE STAFF

Stage Manager ... .. Derek Haywood  
Deputy Stage Manager ... .. Lindsay Haywood  
Asst. Stage Manager (Book) ... .. Joyce Fenton  
Asst. Stage Managers (Cast) ... Peter Beswick, Scott Crawford  
Properties ... .. Margaret Robinson, Jackie Monk, Kate Lang  
Wardrobe ... .. Margaret Horne, Ann Tomlinson  
Lighting ... .. Stephen Lockwood  
Sound ... .. Martin Dean  
Set designed and painted by Roy Blatchford and built by the Production Team.



**THE LITTLE THEATRE**  
THE HOME OF THE SOUTHPORT DRAMATIC CLUB



# EMERSON MENSWEAR

16 Cambridge Walks, Southport PR8 1EN  
Telephone 01704 500636 • Fax 01704 545327

BARUTTI SUITS  
SEIDEN STICKER  
HAGGAR

MILENA SHIRTS  
MEYER TROUSERS

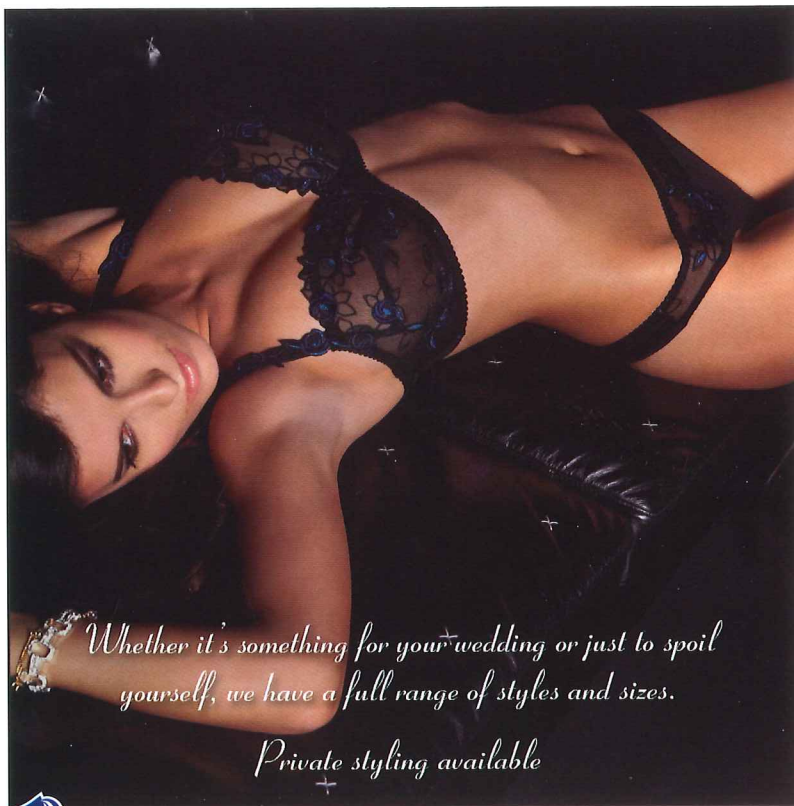
PETER ENGLAND  
GARDEUR TROUSERS  
PURE SHIRTS

*Leading  
designers  
including...*

SOPRANO TIES & CUFFLINKS  
BROOK TAVERNER SUITS/JACKETS/BLAZERS  
HOM/SLOGGI SWIM WEAR  
DOUGLAS GRAHAME

EVENING WEAR  
WEDDING AND HIGHLAND - HIRE AVAILABLE  
(Also to purchase)

Partners: Stephen & David Emerson



*Whether it's something for your wedding or just to spoil yourself, we have a full range of styles and sizes.*

*Private styling available*

54 Botanic Road  
Churchtown, Southport  
PR9 7NE

Tel: 01704 227096

*Open: Tues - Sat  
10am - 5pm*

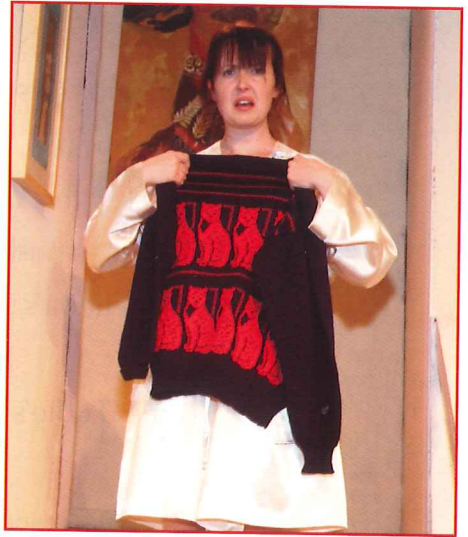
*Come and visit us  
for all your lingerie  
essentials*

*Busy Body's  
Lingerie Specialist*





# SEASON'S GREETINGS





# SEASON'S GREETINGS

By Sir Alan Ayckbourn  
Directed by Stephen Hughes-Alty

## Cast

Neville .....Peter Forshaw  
Belinda (his wife) .....Michelle Pappini  
Phylis (his sister) .....Trudi Hirsch  
Harvey (his uncle) .....Mike Stowell  
Bernard (Phylis's husband) .....Scott Rowan  
Rachel (Belinda's sister) .....Tracey Batchelor  
Eddie .....Giles Davidson  
Pattie (Eddie's wife) .....Emma Hazlehurst  
Clive .....Brendan Gillow

The action takes place in the home of  
Neville and Belinda Bunker

Time: The present

Act 1	Scene 1	Christmas Eve - 7.30pm
	2	Christmas Day - Noon
	3	Christmas Day - Midnight
Act 2	Scene 1	Boxing Day - 3.30pm
	2	December 27th - 5.15am

There will be an interval of 20 minutes between the two acts.  
Why not beat the rush and pre-order your drinks in the bar?





# Staging

Stage Manager	Andrew Connard
Director's Assistant	Jan Hale
Set Design	Syd Coley
Lighting Design and Operators	Tony Berry Phil Hutchinson
Sound Design	Chris Ratcliffe
Properties	Julie Whelan Gay Stowell Diane Hutchinson Lindsay Haywood
Puppet Theatre	Colin Alty James Hughes-Alty
Wardrobe	James Hughes-Alty
Choir Master	Paul Williams
Carol Singers	Polly Morley Paul Williams Steve Pritchard Ceri Watkins Mandy Findlay Rob MacGregor Jan Hale
Set construction	SDC Production Team
Scenic Artist	Bob Jessamine
Photographs	Neil Hickson

## Acknowledgements

The director would like to thank:

The Pier, and the Furniture Emporium, for the very kind loan of the furniture, and also, Flower Angels, c/o Formby Garden Centre, for the flower arrangements.

The Props Team would like also like to say a huge thanks to Ashley and Julie of The Pier, for their politeness, cheerfulness and helpfulness.

**The Little Theatre -  
Home of the Southport  
Dramatic Club.**

### **Gunshots & Pyrotechnics may be used in this production**

The SDC wishes to ensure that all our patrons enjoy a comfortable, enjoyable and safe visit to our theatre. We should be grateful for your cooperation in helping us to achieve this. Please note the following:

- Should you arrive after the performance has started, you will be guided to your seats when a suitable opportunity occurs.
- At the end of the performance, exits will be open at both the front and back of the auditorium.
- First Aid assistance is regularly provided by volunteers from the St. John's Ambulance Brigade. Should you require help, please advise our stewards on duty in the Foyer.
- Patrons with hearing impairments should note that the auditorium has an Induction Loop System for your assistance. Hearing wands are also available from our stewards.
- Cameras and recording equipment may not be operated during performances
- **KINDLY ENSURE THAT YOUR MOBILE PHONE IS SWITCHED OFF.**

Thank you.

**DESIGNATED PREMISES  
SUPERVISOR, ALAN  
NEWPORT**



MORNING



LUNCHTIME



EVENING



AFTERNOON

- New Coffee Bar
- Alfresco Dining
- Lunch & Coffee to go
- A-La Carte Menu
- Cocktail Lounge
- Private Hire
- Outside Catering

**Reservations 01704 530002**

**On the Corner of Lord Street and Eastbank Street  
(beneath Southport Tourist Information Centre)  
[www.corebar.com](http://www.corebar.com)**



# SUZANNE GRAY

PERSONAL ASSISTANT FOR THE HOME

*Offering a professional, friendly approach to  
21st century domestic help.*

*Temporary or permanent services include assistance with  
Dinner parties, event management, and social gatherings, Catering and meal preparation,  
Shoppings, Driving, Pet Care, House-sittings, Key holding, Internet provision and on-line shopping,  
Housework, Mother's help and babysitting*

*Affordable, Honest, Reliable, Fully insured, CRB checked.  
Professional and character references available.*

14 YORK ROAD - BIRKDALE - SOUTHPORT - PR8 2AD  
TEL: 01704 550257 - MOB: 07919 032726 - EMAIL: SUZANNEGRAY@AOL.COM  
[WWW.PAFORTHEHOME.CO.UK](http://WWW.PAFORTHEHOME.CO.UK)





# SEASON'S GREETINGS - Cast

## **Peter Forshaw - Neville**

Peter remembers Christmas as a cold and bleak time. He would have to get up on Christmas Eve and don his uniform, ready to help his two evil mistresses get ready for the Prince's Ball. Then, if he was lucky he'd share a few scraps with his friend by the fireside.

Thankfully he is not, however, playing Buttons this year and so is looking forward to a less strenuous and more relaxing Christmas. Oh, yes he is!



## **Michelle Pappini - Belinda**

Anyone who knows Michelle will also know that she has two large but beautiful dogs. The highlight of the Pappini Christmas is the Christmas Day dog walk. The most important part of this walk is the carefully selected costume that each dog wears. In previous years they have been Donner and Blitzen and Father Christmas and a fairy.

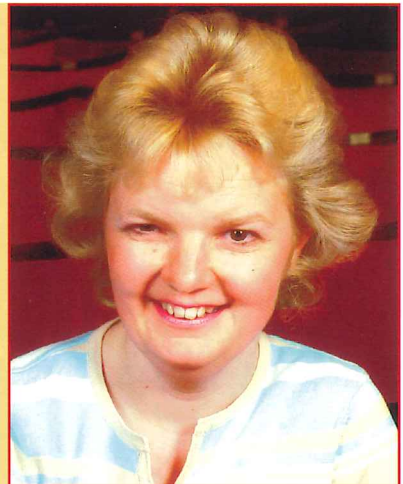
If anyone has any ideas for this year's 'look' then Michelle will be in the bar after each performance.



## **Trudi Hirsch - Phyllis**

In the opening scene, Trudi's character is cooking the Christmas Eve meal whilst other family members comment that the lamb they are about to eat could be 'very pink!'.

This reminds Trudi of the year that her family forgot to defrost the turkey. Someone had said the quickest way to do so was to put it in a bath of cold water. Trudi and her brother, Richard spent an unusual Christmas morning checking on a very 'pink' turkey which made disconcerting glogging sounds as it floated eerily around the bath. Needless to say, Christmas lunch was nearer to midnight than midday that year. The Hirsches have eaten fresh turkeys ever since!





Una Voce Opera Company  
*presents*

# Chu Chin Chow

A Musical Tale of the East

Based on the Arabian Nights' tale of Ali Baba & the Forty Thieves

Written by Oscar Asche  
with music by Frederic Norton

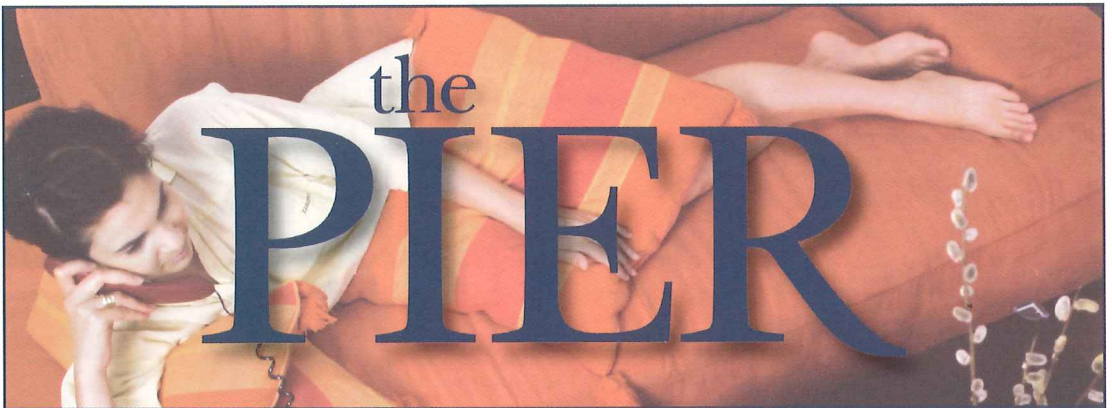
An amateur production by arrangement with Samuel French Limited

**Thursday 4th, Friday 5th,  
Saturday 6th December 2008**

**at 7.30pm - Saturday Matinée 2.30pm**

**Southport Arts Centre**

For further information ring 0151 924 8972



There's nothing quite like a visit to The Pier if you're looking for new ideas, original looks and distinctive styles for your home. With their buyers travelling far and wide around the world, you can be sure there's always something exciting and inspirational waiting for you to discover at The Pier, Southport.

You can find us at  
The Pier, Homebase, Meols Cop Road, Southport, PR9 7RG



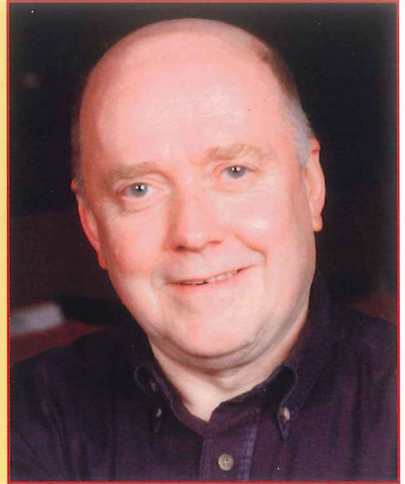


# SEASON'S GREETINGS - Cast

## Mike Stowell - *Harvey*

In *Season's Greeting's*, Uncle Harvey has an obsession with knives, guns and all things military. As a child, Mike too had an obsession. Thankfully, it was not as pronounced or quite as worrying as Harvey's strange compulsion.

In 1947, when obviously a very small boy, Santa brought Mike his very first Dinky Toy. It was a shiny blue Fraser-Nash sports car and he loved it. If only he had kept it along with all the other models he was given in subsequent years - they would probably be worth a fortune today.



## Scott Rowan - *Bernard*

Uncle Bernard is famous for his puppet shows. Unlike the character he is playing, Scott hates puppets.

When he was seven somebody bought Scott a puppet for Christmas. It was a ventriloquist puppet with grey jacket, red hair and flat cap. It sat upon his chest of drawers and he would have nightmares about it every night. It was eventually consigned to the attic by his parents. He still worries it might be there waiting for him.



## Tracey Batchelor - *Rachel*

One of Tracey's earliest memories of Christmas was coming downstairs to find her cat on top of the Christmas tree instead of the fairy. The resourceful pet had climbed up to get at his present, a little catnip mouse. The mouse had been placed, so they had thought, out of reach.

Christmas is even more exciting for Tracey these days as she now has three cats, three catnip mice and a very, very tall tree.



# SEASON'S GREETINGS



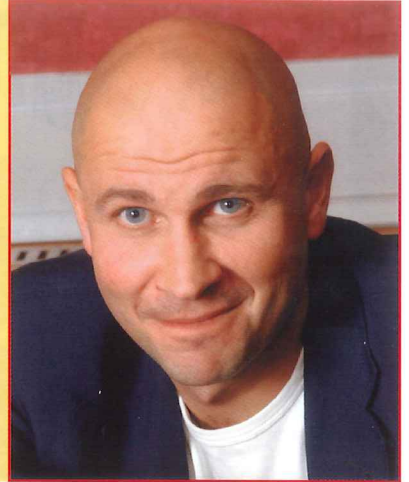


# SEASON'S GREETINGS - Cast

## Giles Davidson - *Eddie*

In the play, Eddie is a chauvinistic layabout who spends most of the Christmas holiday concentrating on his own needs whilst avoiding his wife and children. This is probably as far as you can get from the way in which Giles will be spending his Christmas.

With a new house, and a young family, he will be having a traditional Christmas with mince pies, turkey and all the trimmings...and he'll make sure all the toys work before he wraps them up!



## Emma Hazlehurst - *Pattie*

The heavily pregnant and hard-done-to Pattie seems to get no joy out of Christmas at all. As a newly-wed, Emma intends to get as much joy as she can out of the festive season.

She enjoys winter sports, loves sprouts and finds decorating the tree a soothing and creative experience. She doesn't care if she never sees another puppet as long as she lives!



## Brendan Gillow - *Clive*

Brendan has fond childhood memories of Santa leaving pillowcases full of presents at the end of the bed for him and his brother. One Christmas it became obvious that Brendan's mother must have known exactly what each boy was getting from Santa. After the frenzy of opening gifts was over and with the wrapping paper disposed of she was adamant that some toy soldiers had gone missing.

Had they been thrown away by accident or had Santa decided to take them back? Maybe they're waiting for you in a pillowcase at the bottom of YOUR bed this year.





# LITTLE THEATRE

2nd Half Season

**23rd - 31st  
Jan 2009**

Box Office opens:  
16-1-09

**An SDC  
Production**

## Trap For A Lonely Man

by Robert Thomas, translated by Lucianne Hill and John Sutro

This Amateur production is presented by arrangement with Josef Weinberger Ltd

directed by Ray Mann

Sponsored by Mitchell & Wright Printers Ltd

**20th - 28th  
Feb 2009**

Box Office opens:  
13-2-09

**An SDC  
Production**

## The Shell Seekers

by Terence Brady and Charlotte Bingham

directed by James Hughes-Alty

**11th - 14th  
Mar 2009**

Box Office opens:  
T.B.A.

**An SDC  
Youth  
Production**

## T.B.A.

by T.B.A.

directed by T.B.A.

**27th Mar -  
4th Apr 2009**

Box Office opens:  
20-3-09

**An SDC  
Production**

## The Cemetery Club

by Ivan Menchell

directed by Robin Hirsch

**24th Apr -  
2nd May 2009**

Box Office opens:  
17-4-09

**An SDC  
Production**

## Joan Littlewood's Musical Entertainment Oh What A Lovely War

By Theatre Workshop, Charles Chilton, Gerry Raffles and  
Members of the Original Cast

Title suggested by Ted Allan

by arrangement with Samuel French Limited  
directed by Margaret Mann

**9th -16th  
May 2009**

Box Office opens:  
2-5-09

**Birkdale Orpheus  
Society Production**

## South Pacific

by Rogers & Hammerstein

adapted from "Tales Of The South Pacific"

by James A Michener

Advanced booking 01704 564042

**19th - 23rd  
May 2009**

Box Office opens:  
T.B.A.

**An SDC  
Bar Production**

## T.B.A.

by T.B.A.

directed by T.B.A.







# LITTLE THEATRE

2nd Half Season

**3rd - 6th  
Jun 2009**

Box Office opens:  
27-5-09

**Maghull Musical  
Theatre Company**

## Pajama Game

an Amateur production by arrangement  
with Josef Weinberger Ltd

Advanced booking 0151 547 3025

**11th - 13th  
Jun 2009**

Box Office opens:  
4-6-09

**Too Friendly Theatre  
Company  
Production**

## It's Now Or Never

by Mike Tredinnick

Advanced booking 01704 560229

**17th - 20th  
Jun 2009**

Box Office opens:  
8-6-09

**Waterloo & Crosby  
Theatre Company  
Production**

## Separate Tables

by Terence Rattigan

by arrangement with Samuel French Ltd

Advanced booking 0151 924 0231

**26th - 27th  
Jun 2009**

Box Office opens:  
26-6-09

**Loreto Bamber  
Dancing Academy  
Production**

## Loreto Bamber Dancing Academy's Summer Production

Advanced booking 01704 538351

**1st - 4th  
Jul 2009**

Box Office opens:  
22-6-09

**Southport Amateur  
Operatic Society  
Production**

## Boogie Nights

Written by Jon Conway, script associates Shane Riche & Terry Morrison

an Amateur production by arrangement  
with Josef Weinberger Ltd

Advanced booking 01704 228936

**5th  
Jul 2009**

Box Office opens:  
5-7-09

**Old Hall  
Brass - Wigan  
Production**

## An Evening of Music with Old Hall Brass - Wigan

Advanced booking 01942 715684



Box Office Tel: (01704) 530521/530460

Fax: (01704) 546782

Hoghton Street, Southport PR9 0PA.

[www.littletheatresouthport.co.uk](http://www.littletheatresouthport.co.uk)



# LITTLE THEATRE

Home of the  
Southport Dramatic Club  
Presents

Southport's most popular family pantomime

# SLEEPING BEAUTY



**PARTY BOOKINGS**

Tel: (01704) 530521/530460  
[www.littletheatresouthport.co.uk](http://www.littletheatresouthport.co.uk)

**23rd December 2008 -  
11th January 2009**

Written by Alex Howarth, Directed by Hilary Thomson

Box Office open with effect from 20th October, 2008

Sponsored by



Box Office Tel: (01704) 530521/530460

Fax: (01704) 546782

Hoghton Street, Southport PR9 0PA.

[www.littletheatresouthport.co.uk](http://www.littletheatresouthport.co.uk)

