



LITTLE THEATRE

Home of the
Southport Dramatic Club
Presents



AN INSPECTOR CALLS

By J.B. Priestley

Directed by Celia Pope

19th - 27th September 2008

7.45pm

A Timeless Thriller



Sponsored by

DSG Duncan Sheard Glass
Chartered Accountants



Box Office Tel: (01704) 530521/530460 Fax: (01704) 546782
Hoghton Street, Southport PR9 0PA. www.littletheatresouthport.co.uk

Duncan Sheard Glass

chartered accountants

Are delighted to sponsor Southport
Dramatic Club's production of

AN INSPECTOR CALLS

At DSG we offer intelligent business and
financial advice to the North West region.

For advice - or just a chat - about
your finances, give us a call.

Initial advice - no commitment and no fee.

Contact: Ian Douglas



DSG **Duncan Sheard Glass**
Chartered Accountants

45 Houghton Street
Southport

Merseyside PR9 0PG

Tel: 01704 517333

Fax: 01704 500113

E-mail: southport@dsg.uk.com



CHAIRMAN'S NOTES

It gives me great pleasure, as Chairman of the Southport Dramatic Club, to welcome you, patrons, members and friends, to the first play of our new season.

You cannot have failed to notice the changes which have taken place in our Little Theatre since the end of last season. We hope that the luxury of the new seating will ensure your complete comfort during the performance but of course (to quote Puccini) 'Nobody sleeps' during an SDC performance! If you turn to the rear of the auditorium you will also see that the old scaffold tubes which supported the sound bridge are gone and a new gallery provides much easier access for operators and equipment.

We can look forward to an exciting season. This evening's excellent play is a classic, reflecting an era of (we hope!) now outdated social attitudes, in October we shall see the moving and thought-provoking *Kindertransport* followed, in November, by *Seasons Greetings*: one of Ayckbourn's finest comedies, and the SDC pantomime is always unsurpassed for entertainment and fun for all the family.

Whether you are a member, regular patron, or visiting the Little theatre for the first time 'Welcome' and enjoy *An Inspector Calls*.

Brian Hodge



Dr. Brian Hodge
Chairman



As our sound director, this is Brian's view from the new sound bridge.





YOUR COMPLETE LEGAL TEAM...

- Accident Claims
- Clinical Negligence
- Matrimonial & Family Law
- Lifetime Planning
- Wills, Probate & Trusts
- Commercial Property
- Company & Business Law
- Buying or selling your home
- Debt Collection
- Employment Law
- Dental & Medical Practitioners
- Workplace Illness

Please call **Michael Yates**

01704 872156

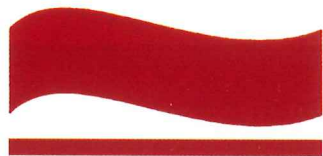
Turret House, 3 Chapel Lane, Formby, L37 4DL

also offices at

Maghull · Aintree · Huyton · Kirkby · Liverpool (City) · Heswall · West Kirby

www.maxwellhodge.co.uk

Maxwell
SOLICITORS **Hodge**



**West Lancashire
Flooring Limited**

74 Ormskirk Business Park
New Court Way
Ormskirk
Lancashire L39 2YT
Tel: 01695 578369
Fax: 01695 570623

Email: admin@wlflooring.co.uk

CONTRACT & DOMESTIC FLOORING SPECIALISTS

Decorative Vinyls/Linoleum

Carpets ~ Hardwood Flooring

Stripwood ~ Blockwood ~ Parquet

Amisco



Tarkett



DIRECTOR'S NOTES

Hello and good evening to you all.

Yet another exciting season of plays begins at our Little Theatre. Many productions have been in my hands but never before a 'first', our opener. This evening is also a new 'first' for you the audience, sitting on our beautiful red plush, perfect posture seats. To our regular Patrons they will feel different but soon their comfort advantages will be recognised.

Now to tonight's play

"An Inspector Calls" is a period costume drama. We all love those don't we. A real thriller. The setting of the play, of necessity has to be 1912. The challenge to any theatre producing this play, is to make it different. It's popularity, (some people have seen it as many as five times), requires inventiveness from the director. A glamorous set and a highly competent group of actors, plus the SDC technical wizardry, will make your visit to the Little Theatre, I hope very memorable. My grateful thanks go to all of them, also to our sponsors Duncan Sheard Glass, and especially, my most grateful thanks to Mo Leefe, without whom my work would have been an almost impossible task.

This is the story of the Birling family, who are spending a happy evening celebrating the engagement of Sheila Birling to Gerald Croft. Their marriage will result in the merging of two successful local businesses. Yet just when everything seems to be going well they receive a surprise visit from Inspector Goole who is investigating the suicide of a young girl. All those enjoying the evening are questioned revealing that each one has a secret linking them to the tragedy.

In this production there is a challenge for the audience. I have yet to decide whether to award a prize. Look out for the 'period erroneous' properties, designed to echo, that having responsibility for our actions is equally relevant today as it was in 1912 or 1945 or when ever.

"An Inspector Calls" is politically charged with messages underlining J.B. Priestley's concerns with social inequality. He deliberately set this play in 1912 because the date represented an era when all was very different from the time when it was written, (1945). In 1912, rigid class and gender boundaries seemed to ensure that nothing would change, yet by 1945 most of those class and gender divisions had been breached. Throughout this play, he encourages people to seize the opportunity that the end of the war had given them, to build a better, more caring society.


Please enjoy this very popular play and think – do we ever learn?

Celia Pope



Celia Pope
Director





for a Truly
outstanding
performance

come to...



 **mitchell&wright**

COLOUR in PRINT

Telephone **01704 535529** or Email sales@mitchellwright.co.uk



NORTH WEST CANCER RESEARCH FUND

HELP US FIND THE CAUSE

Funding Cancer Research for Over 50 Years

22 Oxford Street, Liverpool L7 7BL Tel: 0151 709 2919

Charity Reg. No. 223598



AUTHOR'S NOTES

British journalist, novelist, playwright and essayist. Priestley's output was vast and varied – he wrote over one hundred novels, plays and essays. A man of versatility, he was a patriot, cosmopolitan Yorkshireman, professional amateur, cultured Philistine, reactionary radical and a common-sense spokesman for the ordinary man in the street. Priestley refused both knighthood and peerage but accepted in 1977 the prestigious Order of Merit.

From 1919 Priestley studied literature, history and political science at Bradford and at Cambridge, receiving his B.A. in 1921. From 1922 he worked as a journalist in London, starting his career as an essayist and critic at various newspapers and periodicals, including the *New Statesman*. The first collection of essays, "Brief Diversions" appeared in 1922.



J.B. Priestley

Many years later in 1946 he penned "An Inspector Calls" and in 1954 Alistair Sims starred in the ensuing film.



Tree Tops



Saturday 25th October 7.30pm
on behalf of Clatterbridge Cancer Research Trust



Gourmet Buffet & Selection of Entertainment...

“The Occasionals”

6 piece band playing a variety of Swing, Soul & Chart Classics from the 60's through to today

Our resident DJ Gary Anthony

Magic Circle Magicians

Tickets are £35.00pp · Fancy Dress is optional
Tables of 10 are at a special discount of £300

For bookings and all enquiries please ask at our reception
or call 01704 572430 · sales@treetopsformby.fsnet.co.uk

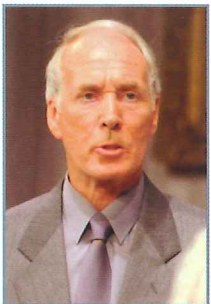
Southport Old Road, Formby Merseyside L37 0AB

www.treetopsformby.co.uk

Supported by prontaprint T.01704 543010 E. sales@southport.prontaprint.com



AN INSPECTOR CALLS





AN INSPECTOR CALLS

By J.B. Priestley

Directed by Celia Pope

CAST

Arthur Birling.....Pete Slater

Gerald Croft.....Iain Robertson

Sheila Birling.....Deborah Bloom

Sybil Birling.....Diane Mackley

Edna.....Jacqueline Hayes

Eric Birling.....Anthony Orme

Inspector Goole.....Peter Heslin

Time: 1912

ACT ONE

The Pride

ACT TWO

The Fall

There will be an interval of 20 minutes between Acts One and Two.
Why not beat the rush and pre-order your drinks in the bar?



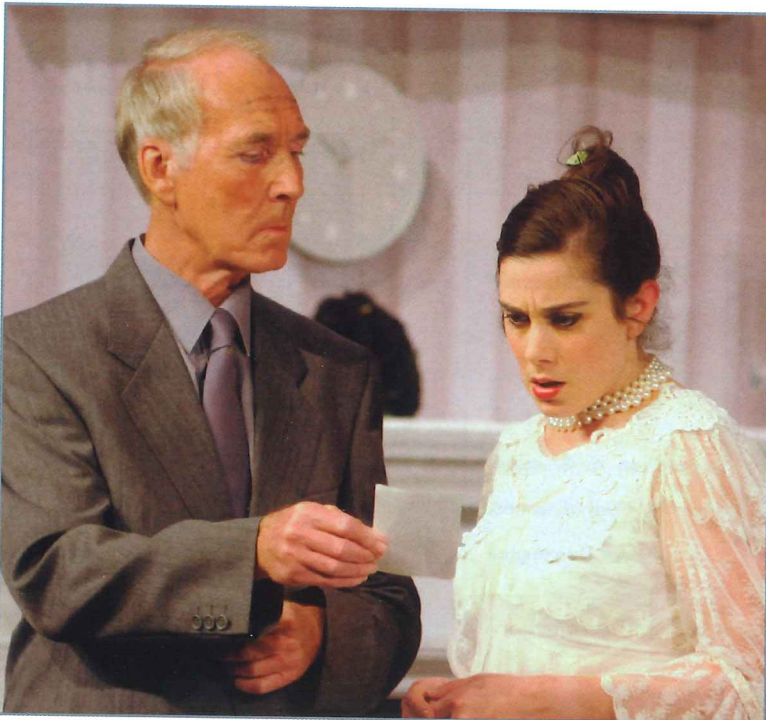
STAGING

Stage Manager	Chris Appleton
Assistant Stage Manager (Book)	Jenny Parker
Lighting Design	Tony Berry
Sound Design	Chris Ratcliffe
Props	Muriel (Mo) Leefe
Wardrobe	SDC Wardrobe
Set construction	SDC Production Team
Scenic Artist	Bob Jessamine
Portrait of Arthur Birling	David Charters
Photographs	Neil Hickson

ACKNOWLEDGEMENTS

The director would like to thank personally:

Lamplighter Gallery of Ainsdale and
Janet Webb, Webb Designs.



The Little Theatre - Home of the Southport Dramatic Club.

The SDC wishes to ensure that all our patrons enjoy a comfortable, enjoyable and safe visit to our theatre. We should be grateful for your cooperation in helping us to achieve this. Please note the following:

- Should you arrive after the performance has started, you will be guided to your seats when a suitable opportunity occurs.
- At the end of the performance, exits will be open at both the front and back of the auditorium.
- First Aid assistance is regularly provided by volunteers from the St. John's Ambulance Brigade. Should you require help, please advise our stewards on duty in the Foyer.
- Patrons with hearing impairments should note that the auditorium has an Induction Loop System for your assistance. Hearing wands are also available from our stewards.
- Cameras and recording equipment may not be operated during performances
- **KINDLY ENSURE THAT YOUR MOBILE PHONE IS SWITCHED OFF.**

Thank you.

DESIGNATED PREMISES
SUPERVISOR, ALAN
NEWPORT



AN INSPECTOR CALLS - 1982

This is the third production of Priestley's "An Inspector Calls" presented by the Southport Dramatic Club.

The original professional production took place at the Manchester Opera house in March 1946 before transferring to the New Theatre, London, the following October. Directed by Basil Dean, the illustrious cast included: Harry Andrew, Margaret Leighton, Alec Guinness and Ralph Richardson as the Inspector.

Our first production in October 1948 was the British Amateur premier. Directed by John S. Wood it received rave reviews by the local press. Jack Todd, Pat Benoliel, Christine Pearson, Nancy Good-Fellow, Joyce Walton, James Hotton and Michael Hards made up the cast.

In December 1982, Iris Collinson directed the following cast: Bill Finn, Mark Braithwaite, Sandra Unsworth, Pat Ball, Frances Gregson, Daniel Jones, with Peter Burroughs as Inspector Goole.

David Charters has developed his original 1982 design by using a full colour illustration for use on this current programme front cover.



Top: David Charters new illustration
Bottom: The cover from the 1982 production

An Inspector Calls

by **J. B. Priestley**

Directed by **Iris Collinson**

Cast

ARTHUR BIRLING	Bill Finn
GERALD CROFT	Mark Braithwaite
SHEILA BIRLING	Sandra Unsworth
SYBIL BIRLING	Pat Ball
EDNA	Frances Gregson
ERIC BIRLING	Daniel Jones
INSPECTOR GOOLE	Peter Burroughs

The cast list from the December 1982 production

A SOUTHPORT DRAMATIC CLUB PRODUCTION OF
J. B. PRIESTLEY'S

AN INSPECTOR CALLS

Directed by Iris Collinson



3rd to 11th DECEMBER 1982



AN INSPECTOR CALLS - CAST

Diane Mackley – Sybil Birling

Diane is more often heard rather than being seen, as she sings with The Houghton Players G&S Society and other operatic groups.

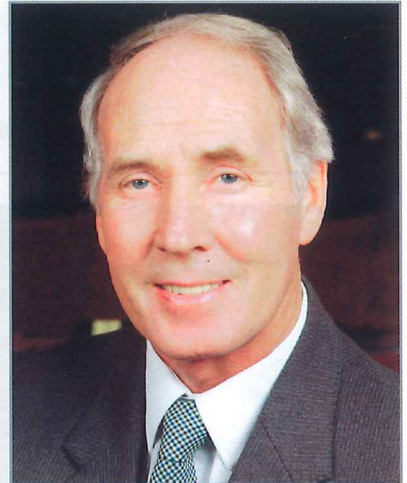
As a teacher by day, Diane feels quite at home in this play where she's usually to be found telling most of the other characters off!



Peter Heslin – Inspector Goole

Peter has been a member of the SDC for almost 20 years appearing on stage in a number of roles including Villains, Inspectors and Comedy characters. He has also appeared in three short films made by local film producers Channel 10. More recently, he played the father in "Billy Liar" and two cameo roles in "Mary Stuart".

Enjoying working backstage as well as 'under the lights', it was as stage manager a few years ago, that he first met the character 'The Inspector'. Peter is looking forward to playing the intriguing and enigmatic person who 'Calls tonight'.

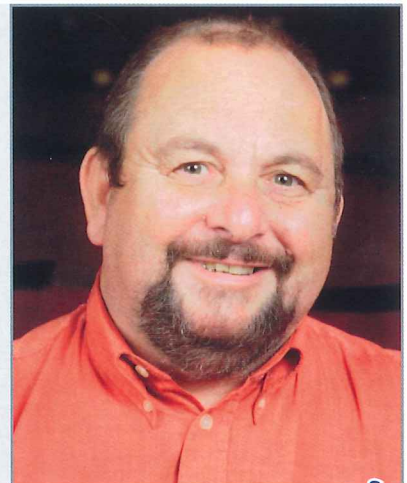


Pete Slater – Arthur Birling

Regular patrons will be happy to learn that Pete keeps his trousers on for the entire performance and even happier to learn that he doesn't sing!

Several cast members have suggested a repeat of his hanging scene from "Habeas Corpus", but without the safety harness.

For this show Pete will take his life into his hands by smoking a cigar and drinking port.



EMERSON MENSWEAR

16 Cambridge Walks, Southport PR8 1EN
Telephone 01704 500636 • Fax 01704 545327

BARUTTI SUITS
SEIDEN STICKER
HAGGAR

MILENA SHIRTS
MEYER TROUSERS

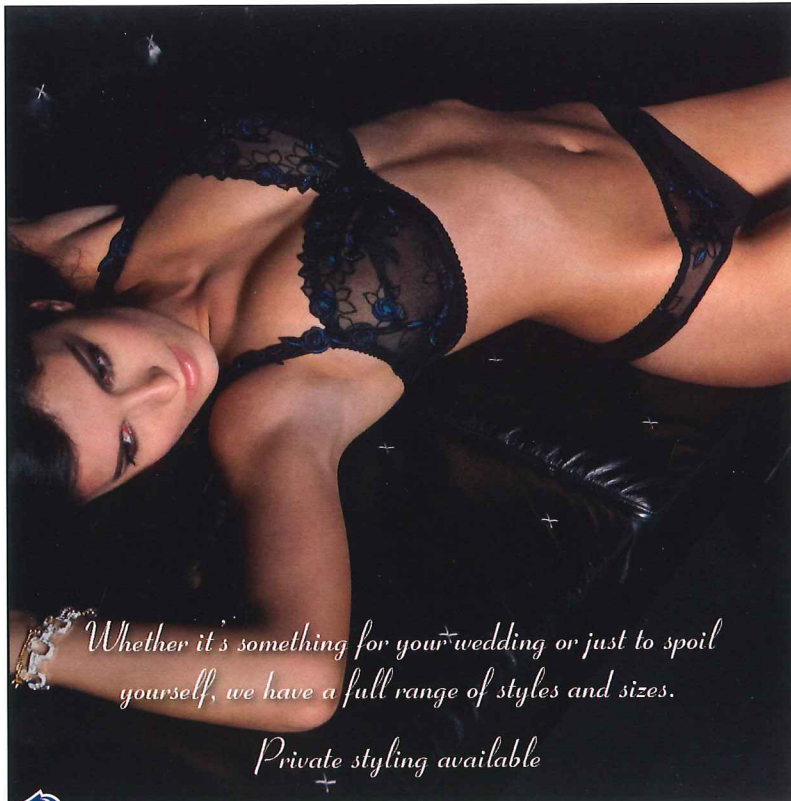
PETER ENGLAND
GARDEUR TROUSERS
PURE SHIRTS

*Leading
designers
including...*

SOPRANO TIES & CUFFLINKS
BROOK TAVERNER SUITS/JACKETS/BLAZERS
HOM/SLOGGI SWIM WEAR
DOUGLAS GRAHAME

EVENING WEAR
WEDDING AND HIGHLAND - HIRE AVAILABLE
(Also to purchase)

Partners: Stephen & David Emerson



Whether it's something for your wedding or just to spoil yourself, we have a full range of styles and sizes.

Private styling available

54 Botanic Road
Churchtown, Southport
PR9 7NE

Tel: 01704 227096

*Open: Tues - Sat
10am - 5pm*

*Come and visit us
for all your lingerie
essentials*

*Busy Body's
Lingerie Specialist*



AN INSPECTOR CALLS - CAST

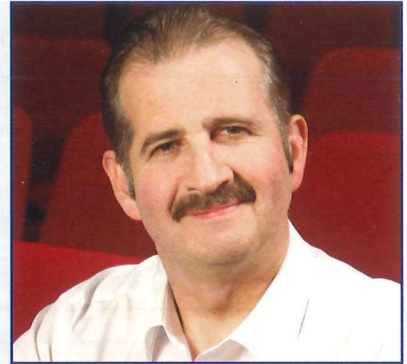
Deborah Bloom — Sheila Birling

Deborah is delighted to make her SDC debut in such a wonderfully written play. She has worked with many local societies playing such roles as Abigail in "The Crucible", Hodel in "Fiddler On The Roof", and the title role in "Mack & Mabel". She is thrilled to be able to say this is her third production since having baby Emily exactly a year ago. She hopes her GCSE Drama pupils enjoy the play and that they wont ridicule her too much back in class! (Welcome to the SDC, Deborah) Ed.



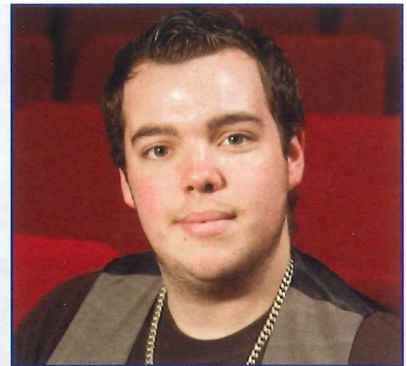
Iain Robertson — Gerald Croft

This is Iain's first production with the SDC. Prior to joining the club he worked with Rutland Arts Theatre and Edinburgh Theatre Arts. Productions ranged from Arthur Millers "A View From The Bridge", which he directed to "Round And Round The Garden", by Alan Ayckbourn and various farces and comedies. He is happiest on stage but has also worked backstage as Stage Manager and on various other roles. He hopes that this production will be the start of a long career with the SDC. (Welcome to the SDC, Iain) Ed.



Anthony Orne — Eric Birling

Anthony is thrilled to be taking the stage in "An Inspector Calls", in his first main season SDC play. He has been in various productions including: "Meet Me In St. Louis", "Thoroughly Modern Millie" and most recently took on the strenuous role of Sweeney Todd in the SDC Youth Theatre production of the musical "Sweeney Todd, The Demon Barber Of Fleet Street". Anthony has just started his first year at KGV College where he is studying to pursue a career in theatre, hopefully being spurred from this production. He is delighted to be working with such fantastic colleagues and eagerly awaits future SDC roles. (Welcome to the SDC, Anthony) Ed.



Jacqueline Hayes — Edna

Jacqueline is quite a new member to the SDC and appearing in her first 'serious' play, Jacqueline, has previously made a lot of noise in "The Full Monty" as a 'Screamer'.

She is somewhat more refined this time. She hopes to display more of her assets in future productions.

(Welcome to the SDC, Jacqueline) Ed.





**BIRKDALE
ORPHEUS
SOCIETY**

presents

Books & Lyrics by
ALAN JAY LERNER

Music by
FREDERICK LOEWE

Adapted from George Bernard Shaw's
play and Gabriel Pascal's motion picture
'PYGMALION'

4th-11th October 2008
Little Theatre, Southport

Visit our website at:
www.birkdaleorpheus.co.uk

This amateur production is presented by
arrangement with MusicScope and
Stage Musicals Limited of New York



NODA National Operatic and Dramatic Society
Registered Charity No: 701236



**my
Fair
LADY**



LEICESTER STREET
SOUTHPORT



...the place where you're special
'Victorian charm with modern comforts'

Winner Ambassador Award 2007
Resident Proprietors
Andrea & Charles King
Leicester Street, Southport,
Merseyside PR9 0ER

Tel: **01704 540794**

Fax: **01704 500724**

Email: **info@lynwoodhotel.com**
or website at **www.lynwoodhotel.com**

Internet wireless connections in all rooms
For Business & Pleasure





LITTLE THEATRE

Southport Dramatic Clubs
1st Half Season 2008 - 2009

**4th - 11th
Oct 2008**

Box Office opens: Sept 08

**A Birkdale
Orpheus
Society
Production**

My Fair Lady

Book and Lyrics by Alan Jay Lerner

Music by Frederick Loewe

Advanced booking Tel: 01704 564042

**24th Oct -
1st Nov 2008**

Box Office opens: 17-10-08

**An SDC
Production**

Kindertransport

By Diane Samuels

An Amateur Production by arrangement with
Nick Hern Books

Directed by David Charters

**5th - 8th
Nov 2008**

Box Office opens: 29-10-08

**A Maghull Musical Theatre
Company Production**

42nd Street

By arrangement with Musicscope
& Stage Musicals Ltd. of New York

Advanced booking Tel: 0151 547 3025

**21st - 29th
Nov 2008**

Box Office opens: 14-11-08

**An SDC
Production**

Season's Greetings

By Sir Alan Ayckbourn

Directed by Stephen Hughes-Alty

**23rd Dec 2008
- 11th Jan 2009**

Box Office opens:
with effect from 20-10-08

**An SDC
Production**

Sleeping Beauty

Written by Alex Howarth

Directed by Hilary Thomson

Box Office Tel: (01704) 530521/530460

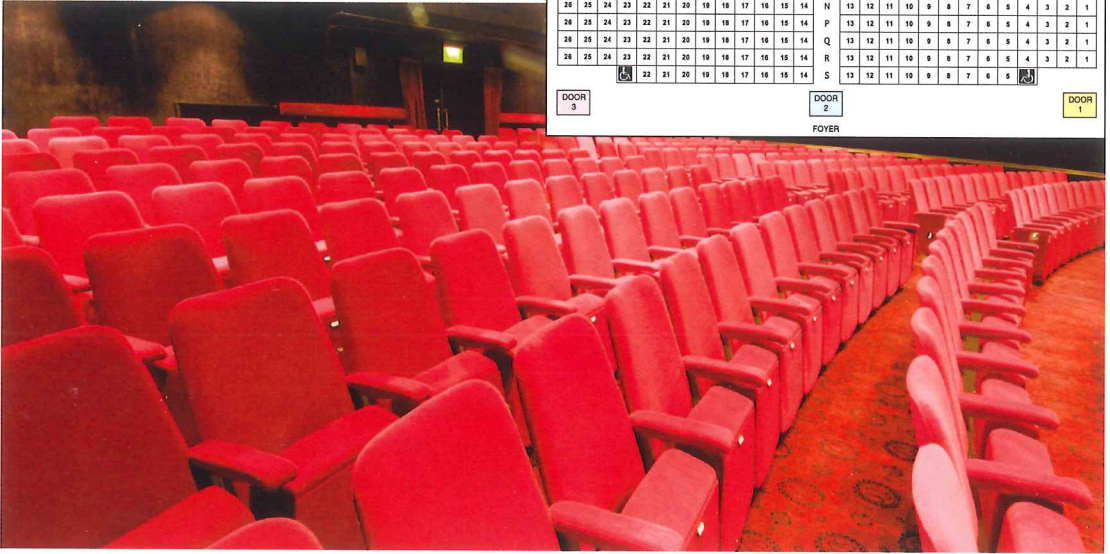
Fax: (01704) 546782

Hoghton Street, Southport PR9 0PA. www.littletheatresouthport.co.uk



NEW SEATS

During the theatre's 2008 closed season the old original seats were replaced with new comfortable, roomier seats giving patrons an improved view of the stage.



EXIT											STAGE											EXIT															
											19	18	17	16	15	14	13	12	11		A	10	9	8	7	6	5	4	3	2							
											21	20	19	18	17	16	15	14	13	12		B	11	10	9	8	7	6	5	4	3	2					
											22	21	20	19	18	17	16	15	14	13	12		C	11	10	9	8	7	6	5	4	3	2	1			
											23	22	21	20	19	18	17	16	15	14	13		D	12	11	10	9	8	7	6	5	4	3	2			
											24	23	22	21	20	19	18	17	16	15	14	13		E	12	11	10	9	8	7	6	5	4	3	2		
											25	24	23	22	21	20	19	18	17	16	15	14		F	13	12	11	10	9	8	7	6	5	4	3		
											26	25	24	23	22	21	20	19	18	17	16	15	14		G	13	12	11	10	9	8	7	6	5	4	3	
											26	25	24	23	22	21	20	19	18	17	16	15	14		H	13	12	11	10	9	8	7	6	5	4	3	
											26	25	24	23	22	21	20	19	18	17	16	15	14		J	13	12	11	10	9	8	7	6	5	4	3	
											26	25	24	23	22	21	20	19	18	17	16	15	14		K	13	12	11	10	9	8	7	6	5	4	3	
											26	25	24	23	22	21	20	19	18	17	16	15	14		L	13	12	11	10	9	8	7	6	5	4	3	
											26	25	24	23	22	21	20	19	18	17	16	15	14		M	13	12	11	10	9	8	7	6	5	4	3	
											26	25	24	23	22	21	20	19	18	17	16	15	14		N	13	12	11	10	9	8	7	6	5	4	3	
											26	25	24	23	22	21	20	19	18	17	16	15	14		P	13	12	11	10	9	8	7	6	5	4	3	
											26	25	24	23	22	21	20	19	18	17	16	15	14		Q	13	12	11	10	9	8	7	6	5	4	3	
											26	25	24	23	22	21	20	19	18	17	16	15	14		R	13	12	11	10	9	8	7	6	5	4	3	
											26	25	24	23	22	21	20	19	18	17	16	15	14		S	13	12	11	10	9	8	7	6	5	4	3	
											26	25	24	23	22	21	20	19	18	17	16	15	14														

DOOR 3 DOOR 2 DOOR 1
FOYER

ASHTON engineering

www.ashtonengineering.com

We had the pleasure in designing, manufacturing and installing the new sound bridge at the Little Theatre

We wish you every success for the future.



All types of Architectural and Structural Steelwork undertaken

TEL: 01704 551511 FAX: 01704 551464





LITTLE THEATRE

Home of the
Southport Dramatic Club
Presents

Southport's most popular family pantomime

SLEEPING BEAUTY



PARTY BOOKINGS
Tel: (01704) 530521/530460
www.littletheatresouthport.co.uk

**23rd December 2008 -
11th January 2009**

Written by Alex Howarth, Directed by Hilary Thomson

Box Office open with effect from 20th October, 2008



Sponsored by



Box Office Tel: (01704) 530521/530460

Fax: (01704) 546782

Hoghton Street, Southport PR9 0PA.

www.littletheatresouthport.co.uk





LITTLE THEATRE

Home of the
Southport Dramatic Club

Presents

Diane Samuel's
POWERFUL AND MOVING DRAMA



Kindertransport

An amateur production by arrangement with Nick Hern books

Directed by David Charters

24th October -
1st November 2008

7.45pm

Box Office opens: Friday, 17th October 2008, 11am

WHEN HER DAUGHTER DISCOVERS SOME OLD LETTERS IN THE ATTIC,
EVELYN IS FORCED TO CONFRONT THE TRUTH OF HER PAST.

Some Strong Language



Box Office Tel: (01704) 530521/530460 Fax: (01704) 546782
Hoghton Street, Southport PR9 0PA. www.littletheatresouthport.co.uk