



# LITTLE THEATRE

An SDC  
Bar Production

Theatre-in-the-round in our air-conditioned bar/studio



## A day in the Death of Joe Egg

*A play that will seize your interest and hug your emotions*

by Peter Nichols

directed by James Hughes-Alty

27th - 31st May 2008  
7.45pm

**WARNING**  
this play contains  
strong language



Box Office Tel: (01704) 530521/530460 Fax: (01704) 546782  
Hoghton Street, Southport PR9 0PA. [www.littletheatresouthport.co.uk](http://www.littletheatresouthport.co.uk)





# A day in the Death of Joe Egg

by Peter Nichols  
directed by James Hughes-Alty

## Cast

Sheila .....Michelle Pappini  
Brian .....Scott Rowan (Guest)  
Pam .....Trudi Hirsch  
Freddie .....Derek McClean  
Grace .....Judy Hall  
Voice of Josephine .....Katie Alty

The action takes place in mid December 1967

## Act 1

Brian and Sheila's living room, late afternoon/early evening

## Act 2

The same later that evening

There will be an interval of 20 minutes between the two acts.



A play that will seize your mind

# Staging

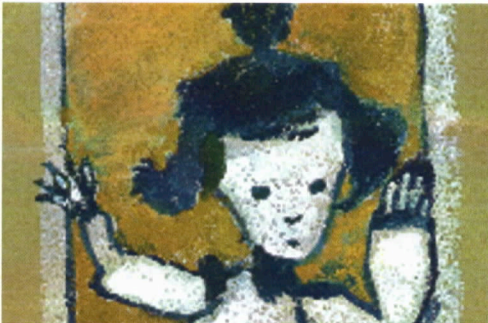
Stage Manager	Roderick Beardsell
Lighting Design	Tony Berry
Sound Design	Brian Hodge
Props	Jeremy Myers & Cast
Wardrobe	James Hughes-Alty & Cast
Prompt	Sue Palmer
Photographs	Neil Hickson

## Acknowledgements

The director would like to thank personally the talented David Charters for Brian's paintings and the image of Joe you will have seen on the posters which then inspired the look of Joe on stage.

I would also like to thank Stephen Hughes-Alty for his help in recording Joe's voice, his support and encouragement and for introducing me to this wonderful play in the first place.

James  
Director



## The Little Theatre - Home of the Southport Dramatic Club.

The SDC wishes to ensure that all our patrons enjoy a comfortable, enjoyable and safe visit to our theatre. We should be grateful for your cooperation in helping us to achieve this. Please note the following:

- Should you arrive after the performance has started, you will be guided to your seats when a suitable opportunity occurs.
- At the end of the performance, exits will be open at both the front and back of the auditorium.
- First Aid assistance is regularly provided by volunteers from the St. John's Ambulance Brigade. Should you require help, please advise our stewards on duty in the Foyer.
- Cameras and recording equipment may not be operated during performances
- **KINDLY ENSURE THAT YOUR MOBILE PHONE IS SWITCHED OFF.**

Thank you.

DESIGNATED PREMISES  
SUPERVISOR, ALAN  
NEWPORT



Interest and hug your emotions



# Director's notes

Welcome to the SDC's out-of-season bar production of *A Day in the Death of Joe Egg*. The play deals with some very serious and sensitive issues which have proved to make working on it a challenging and rewarding experience. The fact that these issues are often explored through humour has added to the challenge, added to that, staging the production in the round, means you have a very demanding play.

Thankfully having a dedicated and talented cast has made it a pleasure to direct. I am very grateful to them all.

**James Hughes-Alty**  
Director



## LITTLE THEATRE

An SDC  
Youth Production

Theatre-in-the-round in our air-conditioned bar/studio

# Sweeney Todd

## The Demon Barber of Fleet Street

*A musical thriller*

Music and Lyrics by Stephen Sondheim

Book by Hugh Wheeler, from an adaptation by Christopher Bond

Originally directed by Harold Prince

Originally produced on Broadway by Richard Barr, Charles Woodward, Robert Fryer,

Mary Lea Johnson, Martin Richards in association with Dean & Judy Manos

An Amateur production by arrangement with Joseph Weinberger Ltd.

on behalf of Music Theatre International of New York

Directed by Stephen Hughes-Alty

**20th - 23rd August 2008**

**27th - 30th August 2008**

**7.30pm**

Box office opens: 15th August 2008, 11am