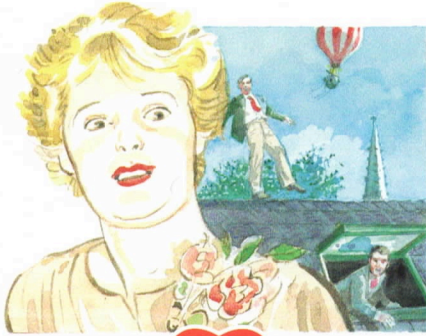




LITTLE THEATRE

A
SOUTHPORT DRAMATIC CLUB
PRESENTATION

Sponsored by
The Royal Bank
of Scotland



Passionate Woman

By Kay Mellor
Directed by David Charters

23rd - 31st March 2007

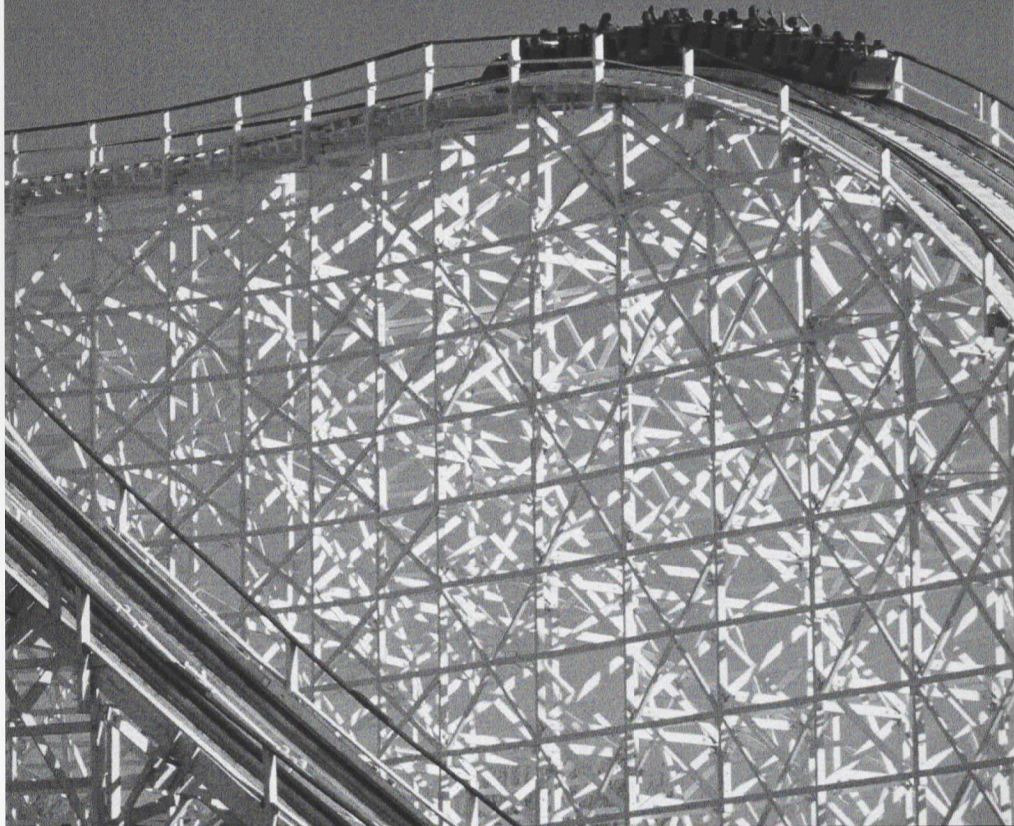
7.45pm



Some everyday expletive
language is used in this play

Box Office: Tel: (01704) 530521/530460 • Fax: (01704) 546782 • www.littletheatresouthport.co.uk

We're not just with you for the ups.



There are highs and lows in business. That's why you need a bank that's with you for the long term.

At The Royal Bank of Scotland we are committed to building relationships with our customers, really understanding their needs, to help their business run smoothly.

If you would like to discuss how The Royal Bank of Scotland can help your business, please contact

Dave Kershaw ACIB, Manager
Commercial Banking (Healthcare)
0151 258 2395
dave.kershaw@rbs.co.uk

Make it happen

www.rbs.co.uk/cbfm

 **RBS**
The Royal Bank of Scotland

Director's Notes



Kay Mellor's phantasmagorical tale of a day in the life of Betty Derbyshire, née Wilson, has presented us with a realistic challenge. But, I am extremely grateful that our talented cast of four has responded with style.

Performing on a two tiered set, designed by the imaginative Syd Coley and constructed by our hard working production team, under the guidance of Roderick Beardsell, has helped to make a dream come true. So I take this opportunity to thank all involved, including the atmospheric lighting design, the special sound effects, wardrobe and props departments. All vital ingredients to create a fantasy.

David Charters
Director

Supplying the complete
range of legal
services

Maxwell
SOLICITORS **Hodge**

Contact **Michael Yates** on
01704 872156

Home and out of hours visits by arrangement



West Lancashire
Flooring Limited

CONTRACT & DOMESTIC FLOORING SPECIALISTS

Amisco



Tel: 01695 578369 Fax: 01695 570623 Email: admin@wlflooring.co.uk

74 Ormskirk Business Park, New Court Way, Ormskirk, Lancashire L39 2YT

Kay Mellor

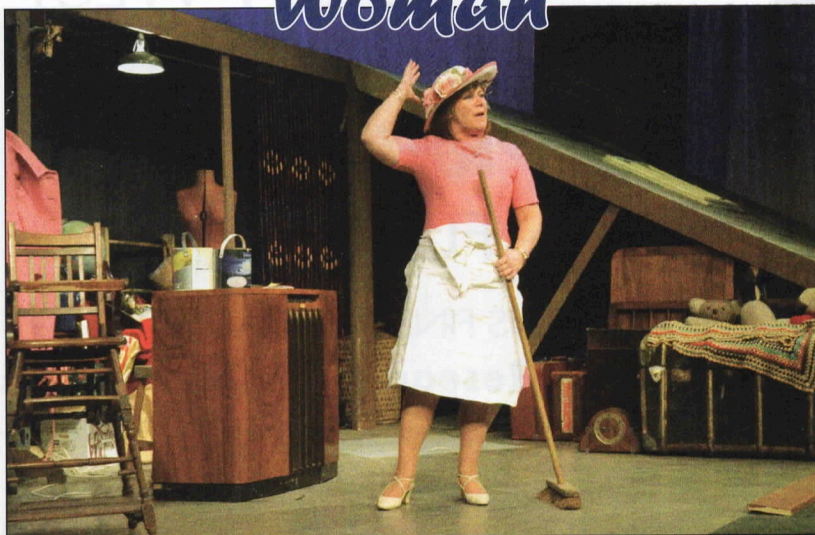
Kay Mellor is passionately “northern”. She was born in Leeds and is famous for writing gritty TV dramas about working class women. She was brought up by her mother and surrounded by women, her Aunties and their female friends. She only met her father when she was 21.

Kay married at 16 and gave birth to two daughters, Gaynor (Faye) the actress, and Yvonne, a TV producer.

Kay is renowned for fastidiously researching her dramas, For *A Band of Gold* she spent months interviewing prostitutes, and feeding them with curry and conversation, for *Fat Friends* she attended slimming clubs and talked to women obsessed by weight and calorie counting, and for *The Chase*, starring her daughter Gaynor Faye, she spent weeks in a vet’s waiting room.

Her career has spanned over 25 years to date, and she is still going strong.

Passionate Woman



 **mitchell&wright**

COLOUR in PRINT

For an outstanding
performance
...visit the experts

01704 535529
sales@mitchellwright.co.uk

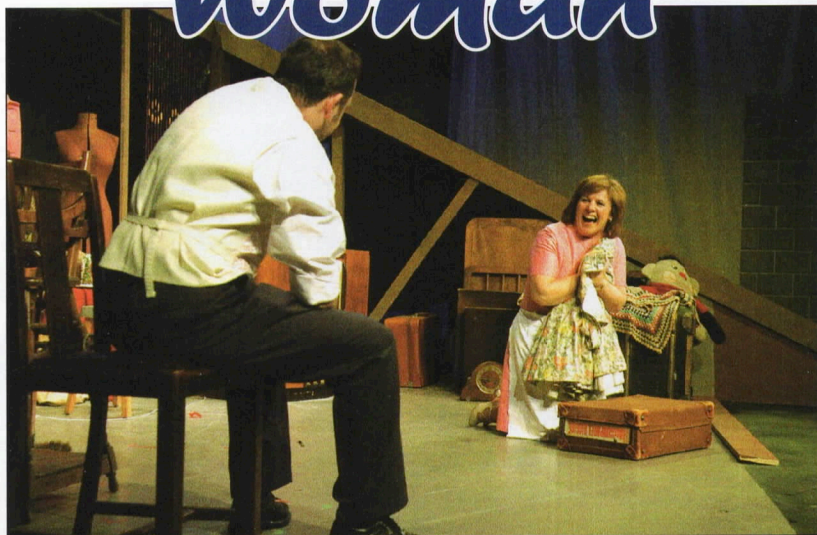


**NORTH WEST
CANCER
RESEARCH
FUND**

HELP US FIND THE CAUSE
Funding Cancer Research for Over 50 Years

22 Oxford Street, Liverpool L7 7BL Tel: 0151 709 2919
Charity Reg. No. 223598

Passionate Woman





A fresh approach to the management of residential blocks of apartments or flats in Southport and the surrounding area.

Services include:

- Attending to routine enquiries
- Collection of service charges and other extraordinary payments
- Arranging building insurance at competitive block insurance rates - commission free
- Managing garden maintenance, window cleaning and cleaning of communal areas
- Arranging repairs and structural works and planned programmes for interior/exterior painting and cyclical maintenance

RDHS offers a comprehensive service to discerning clients that can be tailored to your individual requirements.

If you live in a block of apartments or flats and would like to know what RDHS can do for you then please contact:

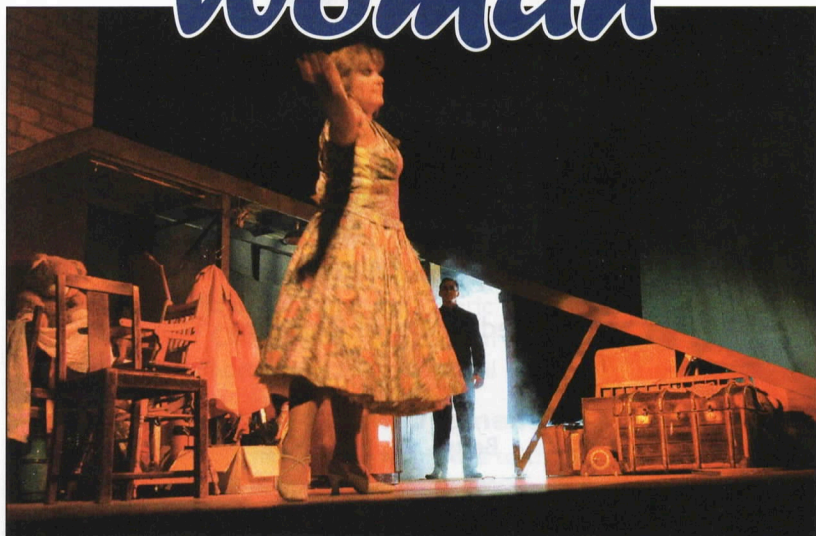
Suzanne Gray
Business Development Manager

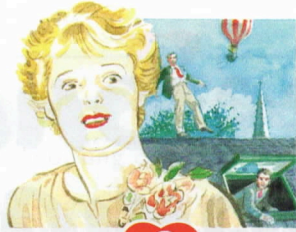
RDHS Limited

Ash Hurst
17 Duke Street
Formby
Liverpool L37 4AN

T - 01704 831444
F - 01704 831539
W - rdhs.co.uk
E - suzanne.gray@rdhs.co.uk

Passionate Woman





Passionate Woman

By Kay Mellor

Directed by David Charters

Cast

Betty JAN HALE
Mark ADRIAN ROBERTS
Donald STEVE PRITCHARD
Craze WILL CAIN

Jo SABRINA RAGAZZONI/
JOANNE HOWARTH

Margaret MARGARET HILL

Fire Officer PETER HESLIN

Act I

1993, Saturday morning, 10.00am.

The loft of a prewar house in the suburbs of a northern town.

Act II

The loft, the roof and up, up and away

All the music in this evenings production is by The Platters, Johnny Mathis or The Drifters

The action is continuous and there will be an interval of 20 minutes between the two acts.

Why not beat the rush and pre-order your interval drinks in the bar?

Staging

Stage Manager	Peter Heslin
Assistant Stage Manager (Book)	Margaret Hill
Assistant Stage Manager (Flying)	Lindsay Haywood, Paul Hodgson
Stage Crew	Brendan Gillow, Helen Pritchard, Sabrina Regazzoni
Properties	Helen Pritchard
Costumes	SDC Wardrobe & Cast
Lighting Design	Andrew Connard
Sound Design	Brian Hodge
Set Design	Syd Coley
Set Constructed by	SDC Production Team
Scenic Artist	Bob Jessamine
Rehearsal Swing	Eric Chadwick
Choreography	Pam Bamber
Photography by	Neil Hickson

Acknowledgements

The director would like to thank:

Emerson Menswear Ltd., Aladdins Cave Ormskirk for menswear
and AFX UK Ltd for aerial equipment

The Little Theatre - Home of the Southport Dramatic Club.

The SDC wishes to ensure that all our patrons enjoy a comfortable, enjoyable and safe visit to our theatre. We should be grateful for your cooperation in helping us to achieve this. Please note the following:

- Should you arrive after the performance has started, you will be guided to your seats when a suitable opportunity occurs.
- At the end of the performance, exits will be open at both the front and back of the auditorium.
- First Aid assistance is regularly provided by volunteers from the St. John's Ambulance Brigade. Should you require help, please advise our stewards on duty in the Foyer.
- Patrons with hearing impairments should note that the auditorium has an Induction Loop System for your assistance. Hearing wands are also available from our stewards.
- For the comfort of all our patrons, smoking in the theatre complex is only permitted at designated tables in the Bar Lounge.
- Cameras and recording equipment may not be operated during performances
- **KINDLY ENSURE THAT YOUR MOBILE PHONE IS SWITCHED OFF.**

Thank you.

DESIGNATED PREMISES SUPERVISOR, ALAN NEWPORT



Country House
Restaurant and Hotel
Southport Old Road
Formby
01704 572430

At Tree Tops we pride ourselves on providing first class service and excellent food along with friendly and efficient staff to ensure that your wedding is the most memorable day of your lives. Our Superb Marquee is capable of seating up to 250. Or alternatively for the more intimate wedding parties you may want to hold your civil marriage/partnership in our beautiful Conservatory, followed by your reception in our Superb Restaurant. Our Lodges situated in the grounds can accommodate your guests overnight.

For more information call
01704 472430

*www.treetopsformby.co.uk
sales@treetopsformby.fsnet.co.uk*

Passionate Woman

Cast

Jan Hale *Betty*

Jan is a cheerful practical girl with her feet planted firmly on the ground, however when she accepted the role of Betty in Kay Mellor's *A Passionate Woman* she found that there was more to be expected of her talents than playing a homely, mumsy character.

Following in the footsteps of such well known actresses as Anne Reid and Stephanie Cole in the Leeds and London productions, respectively, she is endeavouring to attain their dizzy heights. (Aim high, Jan) Ed.



Adrian Roberts *Mark*

Adrian is thrilled to be appearing on the Little Theatre stage again, so soon after landing on it from a flying carpet in the panto *Aladdin*. On that occasion he appeared as Widow Twankey's son Wishee Washee.

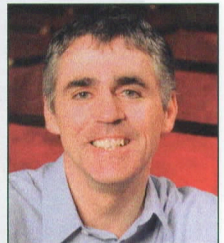
Once again his vertigo is put to the test as he hangs by a thread in an attempt to rescue his mother Betty. He would like to thank the rest of the cast for their support. (Hang on, Adrian) Ed.



Will Cain *Craze*

Many mothers are apprehensive on the day of their offspring's wedding, but not many will have been faced with a spectre of their past as depicted in Kay Mellor's *A Passionate Woman*.

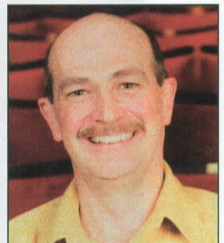
Playing someone who isn't there is the last thing Will expected when asked to take on the role of Craze, but he promises to give it some body. Will says enjoy the play BOO! (Now you see him, now you don't) Ed.



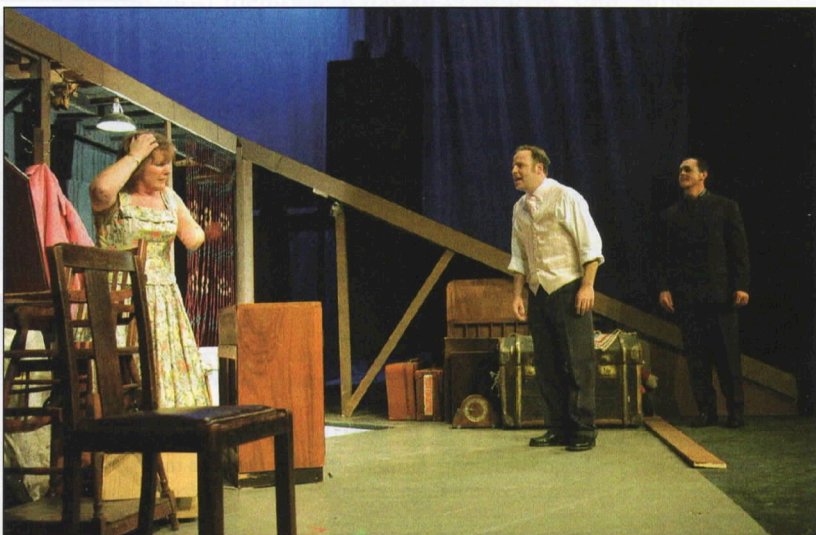
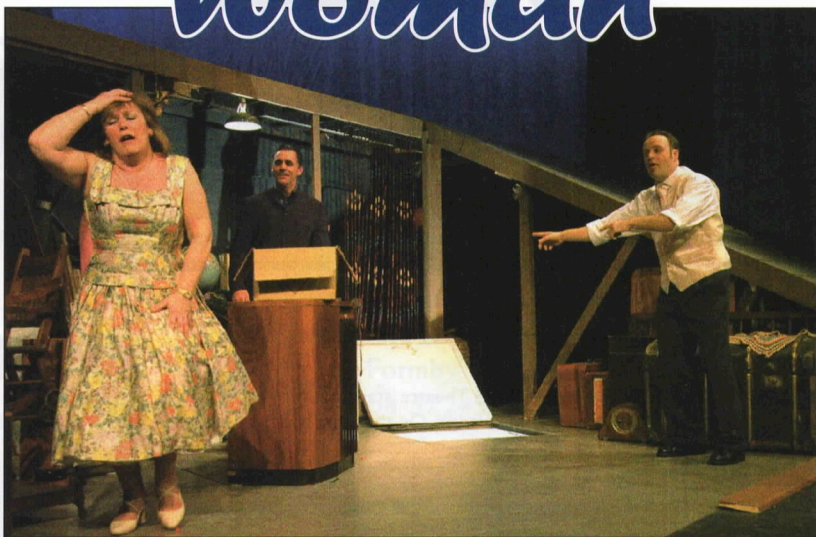
Steve Pritchard *Donald*

Steve says at first sight the part of Donald is the usual "useless husband" character, but as rehearsals have progressed, the other side of the story has started to emerge, which has made the character a real pleasure for Steve to play.

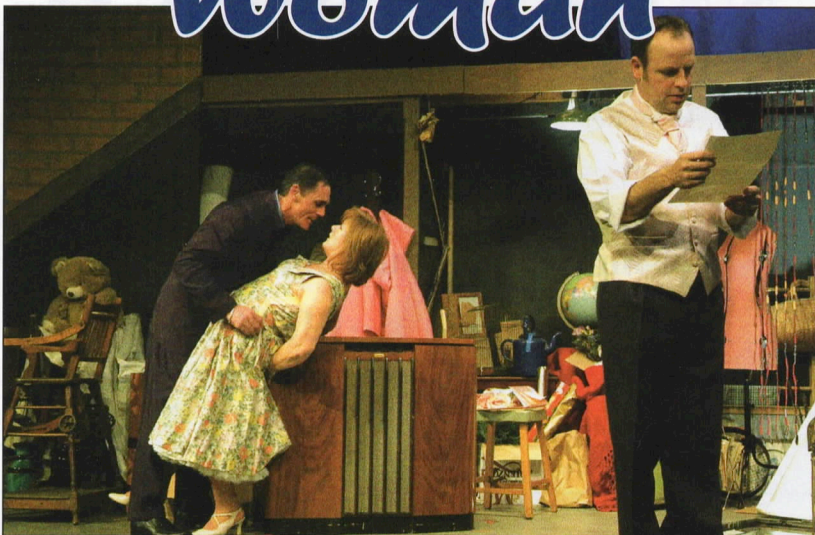
He says it has been great fun to act with such a talented cast and work with David Charters again. At least in this production he is more formally attired, as opposed to his role in David's production of *Princess Ida* for the Hoghton Players. (Keep your feet on the ground, Steve) Ed.



Passionate Woman



a Passionate Woman



EMERSON MENSWEAR

Please ask in-store for brochure

36 King Street, Southport PR8 1JX

Tel: 01704 545133 Fax: 01704 545327

emersonmenswear@amservice.com



Cirrus Ceramics

All aspects of floor and wall tiling

Southport based professional floor and wall tiling company

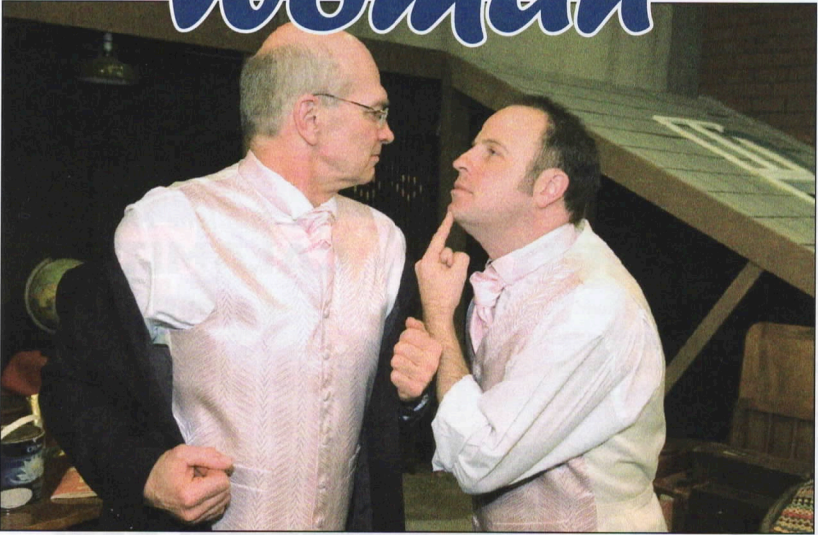
No job too small

on time, with no hidden costs, free estimates and advice

Tel: **07919 525818**

Email: ***cirrusceramics@fsmail.net***

Passionate Woman





LITTLE THEATRE
SOUTHPORT
DRAMATIC CLUB

Dates for your Diary

20th April - 28th April 2007

DAD'S ARMY

By Jimmy Perry and David Croft,
directed by Margaret Mann.

Sponsored by Davies Maintenance.



An SDC Production

12th May - 19th May

BRIGADOON

By Lerna & Lowe,
directed by Hilary Thomson.

A Birkdale Orpheus Production

22nd - 26th May 2007

SITTING PRETTY

By Amy Rosenthal,
directed by Ray Mann.



An SDC Bar Production

31st May - 2nd June 2007

LUCKY SODS

A Too Friendly Theatre Company
Production

6th - 9th June 2007

CALAMITY

JANE

A Maghull Theatre Company
Production

13th - 16th June 2007

WHAT THE

BUTLER SAW

A Waterloo Theatre Company
Production

27th - 30th June 2007

COPACABANA

A Southport Operatic Society
Production

6th - 7th July 2007

PAM BAMBER'S DANCE FESTIVAL

Box Office: Tel: (01704) 530521/530460 • Fax: (01704) 546782 • www.littletheatresouthport.co.uk

8 Windows & 2 Doors

only **£1975**
Fitted

"Are you fed up with all the **PHONY DEALS**, **MASSIVE DISCOUNTS**, **MISLEADING STATEMENTS** and supposedly **FREE GIFTS ON OFFER**? well forget all that and Call **WINDOWORLD** now for **GENUINE ROCK BOTTOM PRICES**"

WINDOWS



£199

DOORS



£399

FRENCH DOORS



£799

**WE WILL BEAT ANY GENUINE QUOTE
BY £50** ASK FOR DETAILS



Victorian
£4295

Lean-to
£4495

Edwardian
£4698

KNOCKOUT DEALS ALL YEAR ROUND

windows • conservatories • doors • roofline
window  **ORLD**

WWW.BUYDOUBLEGLAZING.CO.UK

Trade Centre **0151 - 285 - 1844**

- NO SALESMAN WILL CALL -

Crown Business Centre, Sefton Lane Industrial Estate, Maghull
PICTURES FOR ILLUSTRATION PURPOSES ONLY

238877



LITTLE THEATRE

A
SOUTHPORT DRAMATIC CLUB
PRESENTATION

Sponsored by
**Davies
Maintenance**



DAD'S ARMY

BY JIMMY PERRY
AND DAVID CROFT

DIRECTED BY MARGARET MANN

20TH - 28TH

APRIL 2007

7.45PM



Tickets: £8.25 & £7.00

Box Office from: Friday 13th April, 11.00am

Box Office: Tel: (01704) 530521/530460 • Fax: (01704) 546782 • www.littletheatresouthport.co.uk