



LITTLE THEATRE

A
SOUTHPORT DRAMATIC CLUB
PRESENTATION

Sponsored by



STRANGERS ON A TRAIN

A gripping psychological thriller

By Craig Warner

Adapted from the novel by
Patricia Highsmith

Directed by Stephen Hughes-Alty

**24th November -
2nd December 2006**

7.45pm



Box Office: Tel: (01704) 530521/530460 • Fax: (01704) 546782 • www.littletheatresouthport.co.uk

ASSA

M.L.S.

ERA[®]
SECURITY PRODUCTS



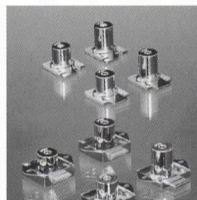
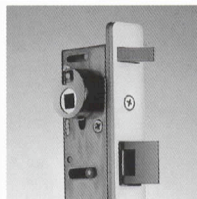
MUL-T-LOCK

CHUBB



ABLOY
CENTRE

Yale
Security
Service



A local
company
specialising
in the supply
of security
locks and
access control
equipment
throughout the
North West.

Tel: 01704 545400 Tel: 0800 137460

MASTER
LOCK & SAFE

DIRECTOR'S NOTES



Strangers on a Train perhaps epitomises the perfect 'psychological thriller'. Originally produced as a novel by Patricia Highsmith, best known for her infamous 'Ripley' books, it is a dark exploration of obsession, domination and the ultimate redemption offered by unconditional love.

Many of you will be familiar with the 1951 Hitchcock film version, a blackly comic treatment which, although examining similar themes, has very little to do with the brooding, often menacing atmosphere of the novel. It was with great delight, therefore, that I accepted the challenge of directing Warner's play version as it followed closely the actions of Highsmith's original.

And a challenge it has proved to be – albeit an exciting, enlightening and rewarding one. Firstly we had to represent thirteen different locations ranging from a train carriage to a villa in Mexico. I am indebted to Syd Coley and the Production team for creating the vision and bringing it to life so beautifully. Secondly we had to capture the idealistic America of the 1950s, the appropriate costumes, the correct hair-styles, the right props and atmospheric sound and lighting effects. My sincerest thanks go to Sherel, Kate, James, Chris and Tony for adding the finest of detail and Andrew Connard, my ever-efficient stage-manager for co-ordinating everything.

Finally I must thank my cast who embarked upon this journey with me. They have worked hard, shared my passion for the story and exceeded my expectations in breathing life into these complex and intriguing characters. I hope you enjoy their efforts as much as I have enjoyed working with them.

But now, we must begin: the train is about to depart, hold on tight as it promises to be a very bumpy ride...

Stephen Hughes-Alty
Director

Supplying the complete
range of legal
services

Maxwell
SOLICITORS **Hodge**

Contact **Michael Yates** on
01704 872156

Home and out of hours visits by arrangement



West Lancashire
Flooring Limited

CONTRACT & DOMESTIC FLOORING SPECIALISTS

Amisco



Tarkett

PRE - FINISHED
HARDWOOD FLOORING

Tel: 01695 578369 Fax: 01695 570623 Email: admin@wlflooring.co.uk

74 Ormskirk Business Park, New Court Way, Ormskirk, Lancashire L39 2YT

PATRICIA HIGHSMITH AND CRAIG WARNER

Patricia Highsmith

Patricia was born near Fort Worth, USA in 1921 and, became a prolific writer of Physiological crime thrillers. She became known world wide for *Strangers on a Train* when it was adapted by Craig Warner, for the screen mostly made famous by Alfred Hitchcock, in 1951.

Although Patricia was well known for her 33 successful novels she shunned public life and preferred the company of animals, to people. She was an alcoholic and eventually died of cancer in Switzerland in 1995, at the age of 74.

Craig Warner

Craig has written extensively for Radio, TV, Theatre and Films. Some of his work has been acclaimed with various awards, such as The Giles Cooper Award for the best radio play of the year. Recently he has worked on the *Mist of Avonlea* a four hour mini series for Warner Bros. TV, starring Angelica Houston and Joan Allen, and also the opera *The Mind and Body Problem*, based on his play with music by Julian Grant.



For an
outstanding
performance
...visit the experts



Mitchell & Wright Printers Limited

Call 01704 535529 or

Email sales@mitchellwright.co.uk



NORTH WEST
CANCER
RESEARCH
FUND

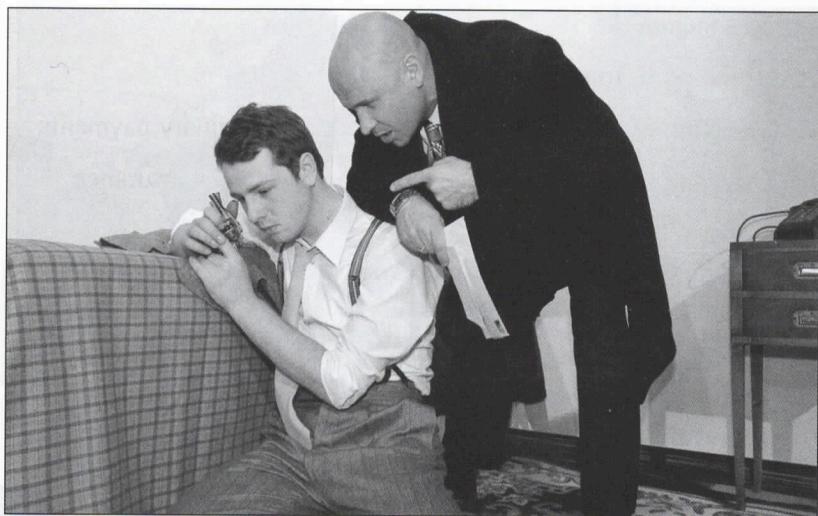
HELP US FIND THE CAUSE

Funding Cancer Research for Over 50 Years

22 Oxford Street, Liverpool L7 7BL Tel: 0151 709 2919

Charity Reg. No. 223598

STRANGERS ON A TRAIN





A fresh approach to the management of residential blocks of apartments or flats in Southport and the surrounding area.

Services include:

- Attending to routine enquiries
- Collection of service charges and other extraordinary payments
- Arranging building insurance at competitive block insurance rates - commission free
- Managing garden maintenance, window cleaning and cleaning of communal areas
- Arranging repairs and structural works and planned programmes for interior/exterior painting and cyclical maintenance

RDHS offers a comprehensive service to discerning clients that can be tailored to your individual requirements.

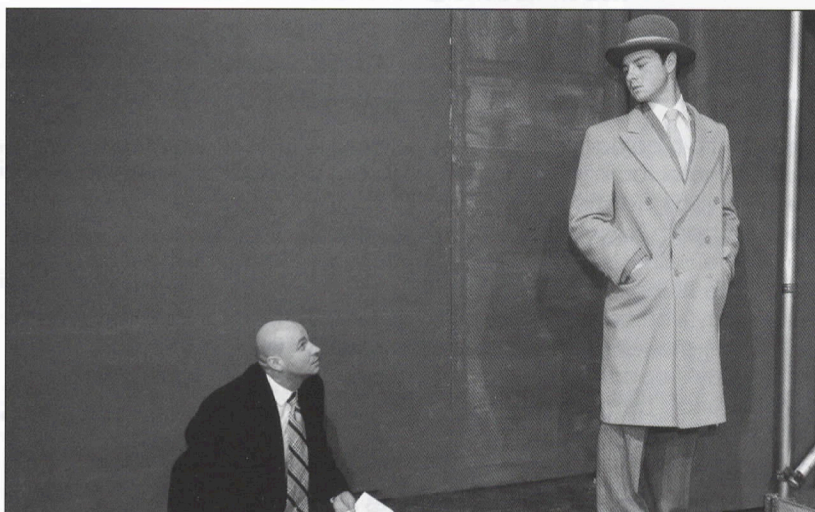
If you live in a block of apartments or flats and would like to know what RDHS can do for you then please contact:

Suzanne Gray
Business Development Manager

RDHS Limited

Ash Hurst	T - 01704 831444
17 Duke Street	F - 01704 831539
Formby	W - rdhs.co.uk
Liverpool L37 4AN	E - suzanne.gray@rdhs.co.uk

STRANGERS ON A TRAIN



STRANGERS ON A TRAIN

By Craig Warner

Adapted from the novel by
Patricia Highsmith

Directed by Stephen Hughes-Alty

Cast

Guy Haines..... ANDREW KAYE
Charles Bruno..... GILES DAVIDSON
Elsie Bruno..... SANDRA UNSWORTH
Anne Faulkner..... MICHELLE PAPPINI
Frank Myers..... STEVE PRITCHARD
Robert Treacher..... BRENDAN GILLOW
Arthur Gerard..... RAY MANN

The action takes place in America in the 1950s.

Act 1

Scene 1 A train carriage
Scene 2 A hotel room in Santa Fe
Scene 3 A villa in Mexico
Scene 4 A bar in New York
Scene 5 The Haines's living-room
Scene 6 The Bruno residence
Scene 7 Guy's office /
The street outside
Scene 8 Guy's apartment
Scene 9 Bruno's bedroom
Scene 10 Guy's apartment /
The Bruno residence

Act 2

Scene 1 The Haines's living-room
Scene 2 The study in the Bruno
residence
Scene 3 The Haines's living-room
Scene 4 The drawing-room in the Bruno
residence
Scene 5 The Haines's living-room
Scene 6 Bruno's bedroom
Scene 7 An old railway yard

There will be an interval of 20 minutes between Acts one and two.

Staging

Stage Manager	Andrew Connard
Assistant Stage Manager	Lindsay Haywood
Assistant Stage Manager (Book)	Emma Hitchcock
Props	James Hughes-Alty, Richard Alty, Dorothy Alty, Natalie Fletcher, Bex Hinds
Wardrobe	Sherel Coley, Margaret Mann
Hair	Kate Lonsdale
Lighting	Tony Berry
Sound	Chris Ratcliffe
Backstage Crew	Phil Hutchinson, Chris Hutchinson, Adrian Roberts, Nick Evans, Peter Beswick, Colin Haynes, Brendan Gillow
Set Design	Syd Coley
Set Constructed by	SDC Production Team
Scenic Artist	Bob Jessamine
Photography by	Neil Hickson

Acknowledgements

The Director would like to thank:

Brian Stevenson for the loan of camera equipment and
Poppy Flanagan for her initial hard work.

The management reserves the right to refuse admission to the auditorium after curtain up until a suitable opportunity occurs. First aid facilities are provided at this theatre by St John Ambulance Brigade, whose members give their services voluntarily.

Why not beat the rush and pre-order your interval drinks in the bar?

A new induction loop has been installed in this theatre for the benefit of hearing impaired patrons. Please turn your hearing aid to 'T'.

Please ensure that all mobile telephones are switched off

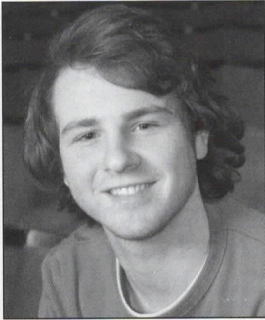
At the end of tonight's performance you may leave by any of the exits, all of which will be open. In an emergency, this theatre can be emptied in three minutes or less if everyone leaves in an orderly manner.

Smoking is prohibited in the auditorium.

DESIGNATED PREMISES SUPERVISOR, ALAN NEWPORT

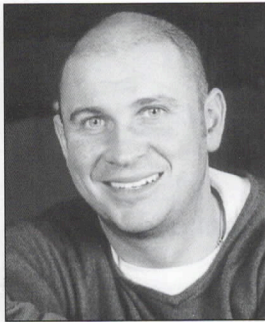
STRANGERS ON A TRAIN

Cast



Andrew Kaye *Guy Haines*

Although no 'stranger' to SDC audiences, after successful appearances in last season's *Billy Liar* and *The Gingerbread Lady*, Andrew has not had to play a character with such extreme displays of emotion before. He has, therefore, found portraying the part of Guy Haines a welcome challenge. He has enjoyed the experience of developing the complex character and working with the director, cast and crew.



Giles Davidon *Charles Bruno*

Giles has relished playing the part of Charles Bruno because, as every actor knows, it is far more enjoyable to play an evil character than it is to play a virtuous one. He hopes, however, that you manage to find some sympathy for his character, even if it is for how much he has to drink whilst on stage! Ironically, he and Andrew are not strangers at all as they both appeared in last year's out-of-season bar production together.



Sandra Unsworth *Elsie Bruno*

Sandra has had many varied parts in SDC plays though this may be the first set in the 1950s. Despite this being a cameo role, her character of Elsie probably has at least as many costume changes as any of her previous ones.

Stephen is well used to directing Sandra's son in the SDC Youth Theatre Productions but she is delighted to be directed by him herself.

STRANGERS ON A TRAIN

Cast

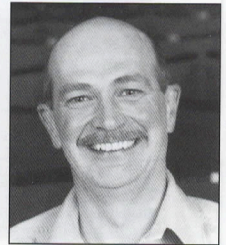
Michelle Pappini *Anne Faulkner*

Although a well-known local actress, this is Michelle's first appearance for the SDC. She is delighted to have worked on this production and has found many similarities between herself and the strong, pragmatic character of Anne Faulkner. However, she has also found many differences. Whilst Anne prefers flower arranging, Michelle, with two dogs, a teaching career and studying for an MA in Performing Arts, her life seems to be more like a juggling act!



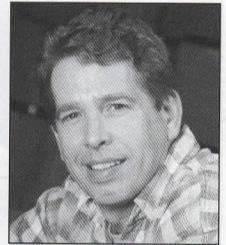
Steve Pritchard *Frank Myers*

Steve has greatly enjoyed researching and playing the part of Frank Myers. Having performed in many Merry-Go-Round productions with Stephen Hughes-Alty, usually as resident father/grandfather/other random old person, it has been a real pleasure and an education to be directed by him in this taut psychological thriller.



Brendon Gillow *Robert Treacher*

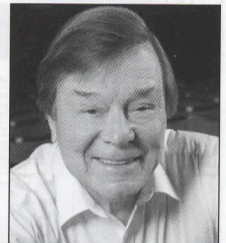
After spending the summer recuperating after the rigours of *Noises Off*, (where Stephen played his director rather than actually being it) Brendan is delighted to be back and working with such a talented cast. Each rehearsal brought a new insight and fresh perspective and he particularly found the improvisation and hot-seating to be enjoyable and revealing.



Ray Mann *Arthur Gerard*

One of the many delights of playing in the amateur theatre is the variety of roles experienced.

In Ray's last outing he was a cockney burglar; on this occasion he is an American private investigator. Last time the housebreaker was totally incompetent; this time-will the sleuth get his man?





LITTLE THEATRE

HOME OF

SOUTHPORT DRAMATIC CLUB

Advertisers Wanted

Spaces to let in this programme

Half Page – £25.00 per production plus VAT

Full Page – £50.00 per production plus VAT

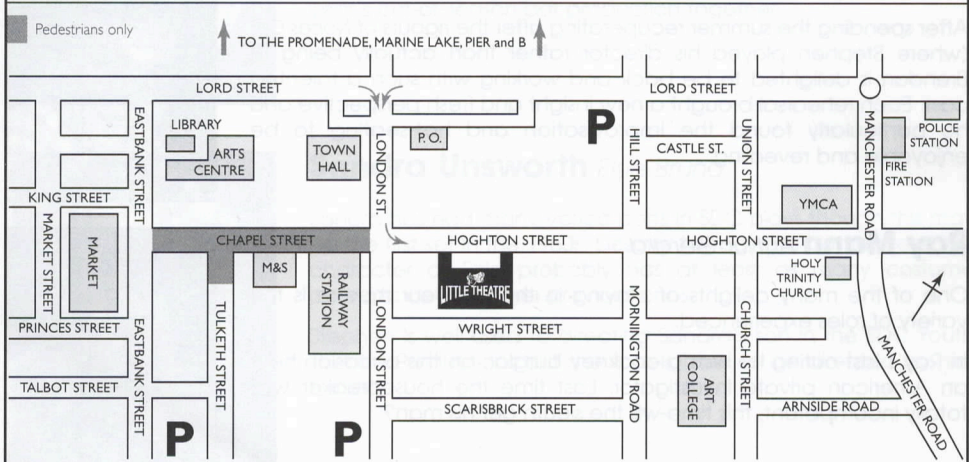
Please contact: Norman Hope, Publicity Committee

HOGHTON STREET, SOUTHPORT

Tel: (01704) 530521/530460 www.littletheatresouthport.co.uk

Registered Charity No. 221585

SUGGESTED PARKING FOR THE LITTLE THEATRE



STRANGERS ON A TRAIN





TREETOPS CHRISTMAS PARTY NIGHTS

We really do aim to have lots of fun this Christmas. Dancing and Disco, good food and wine, superb setting with friendly and efficient services so that we can serve you in the most professional way.

We are preparing the marquee in tables of ten or multiples of. Please telephone so that we can plan together for a special evening with family, friends and business colleagues. We hope that smaller parties will join together to help create a party atmosphere.

At all of our party night functions there will be hats and balloons provided which we hope will encourage you to party the night away.

Treetops Restaurant Formby
Tel: 01704 472430
www.treetopsformby.co.uk



LITTLE THEATRE
SOUTHPORT
DRAMATIC CLUB

2nd Half Season 2007

26th January - 3rd February 2007

Brassed Off

By Paul Allen from the screenplay by Mark Herman
directed by Robin Hirsch. Sponsored by Mitchell & Wright Printers Ltd.

16th February - 24th February 2007

Mary Stuart

By Schiller adapted by Peter Oswald,
directed by Alistair Hewitt.

23rd March - 31st March 2007

A Passionate Woman

By Kay Mellor, directed by David Charters.
Sponsored by The Royal Bank of Scotland.

20th April - 28th April 2007

Dad's Army

By Jimmy Perry and David Croft
directed by Margaret Mann. Sponsored by Davies Maintenance

22nd May - 26th May 2007

Sitting Pretty

By Amy Rosenthal
directed by Ray Mann, An SDC Bar Production



LITTLE THEATRE
SOUTHPORT
DRAMATIC CLUB

Dates for your Diary

21st December 2006 - 7th January 2007

ALADDIN

Written by Alison Tarpey, directed by Elsbeth Fisher.
Sponsored by NatWest



An SDC Production

26th January - 3rd February 2007

BRASSED OFF

By Paul Allen from the screenplay by Mark Herman
directed by Robin Hirsch. Sponsored by Mitchell & Wright Printers Ltd.



An SDC Production

16th February - 24th February 2007

MARY STUART

By Schiller Adapted by Peter Oswald
directed by Alistair Hewitt.



An SDC Production

7th March - 10th March 2007

PYGMALION

By George Bernard Shaw
directed by James Hughes-Alty.



An SDC Youth Production

Box Office: Tel: (01704) 530521/530460 • Fax: (01704) 546782 • www.littletheatresouthport.co.uk

"With London and the East Coast ports out of action, the very survival of the United Kingdom depended on the port of Liverpool remaining open and fully operational."

Liverpool - A City at War

by Bryan Perrett

Unobtainable for many years, this popular history of Liverpool during the Second World War is now back in print.

Obtainable from Hugo Press Ltd, 7 Marple Avenue, Burscough, Lancashire L40 5SL. £12 plus £1.20 postage. ISBN 0-9550324-0-7 172pp illus and maps



LITTLE THEATRE
HOME OF



SOUTHPORT DRAMATIC CLUB

**Do you enjoy Acting, Performing, Working
Backstage or Front of House?**

If so SDC would welcome you as a full member.

Application forms for membership are available on request from the Secretary, Tel: **01704 530521/530460** and or any member or house manager on duty at the performances.

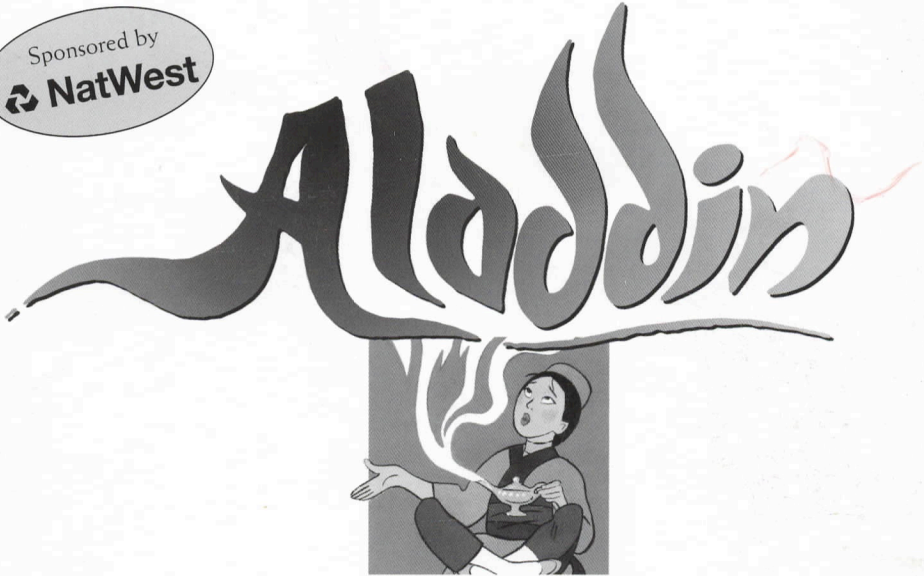


LITTLE THEATRE

A
SOUTHPORT DRAMATIC CLUB
PRESENTATION

Southports most spectacular family Pantomime

Sponsored by
 NatWest



Written by Alison Tarpey
Directed by Elspeth Fisher
Musical Director Paul Williams
Choreographer Nicki Dennis
Staged by Arnold Gorse

21st December 2006
- 7th January 2007



Tickets: Rows A-L £8.75 & Rows M-Q £6.75
Box Office from: 17th November 2006, 11am

Box Office: Tel: (01704) 530521/530460 • Fax: (01704) 546782 • www.littletheatresouthport.co.uk

**Generous
Concessions &
Party bookings**