



LITTLE THEATRE

A
SOUTHPORT DRAMATIC CLUB
PRODUCTION

Arthur Miller's



A VIEW from the BRIDGE

Directed by Pat Ball

*This Amateur production is presented by arrangement
with Josef Weinberger Ltd.*

**24th February -
4th March 2006**

at 7.45pm


LITTLE THEATRE
SOUTHPORT
HOME OF
THE SOUTHPORT DRAMATIC CLUB

Box Office:

Tel: (01704) 530521/530460

Fax: (01704) 546782

www.littletheatresouthport.co.uk

Supplying the complete
range of legal
services

Maxwell
S O L I C I T O R S **Hodge**

Contact **Michael Yates** on
01704 872156

Home and out of hours visits by arrangement



West Lancashire
Flooring Limited

CONTRACT & DOMESTIC FLOORING SPECIALISTS

Amisco
®



Tarkett

PRE - FINISHED
HARDWOOD FLOORING

Tel: 01695 578369 Fax: 01695 570623 Email: admin@wlflooring.co.uk

74 Ormskirk Business Park, New Court Way, Ormskirk, Lancashire L39 2YT

Director's Notes

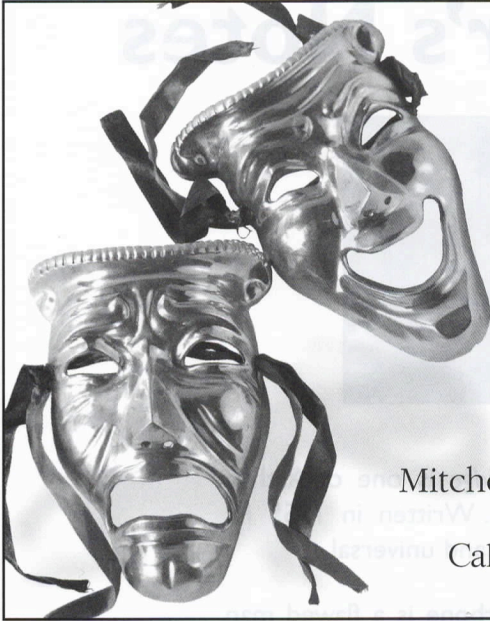


A View From The Bridge is one of Arthur Miller's' finest plays. Written in 1955 its themes are timeless and universal.

The hero Eddie Carbone is a flawed man whose story unfolds in the manner of a Greek Tragedy.

Our company hope that you will find this production both thought-provoking and moving

Pat Ball
Director



For an
outstanding
performance
...visit the experts



Mitchell & Wright Printers Limited

Call 01704 535529 or

Email sales@mitchellwright.co.uk



NORTH WEST
**CANCER
RESEARCH**
FUND

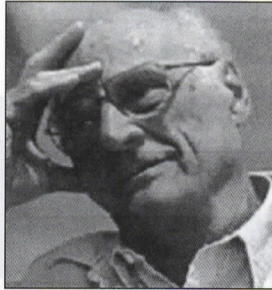
HELP US FIND THE CAUSE

Funding Cancer Research for Over 50 Years

22 Oxford Street, Liverpool L7 7BL Tel: 0151 709 2919

Charity Reg. No. 223598

Arthur Miller



Arthur Miller was one of the most significant American writers of the 20th century. Harold Pinter said of him “He was a man of rare integrity, a great playwright and his plays were among the finest works that have been produced this century”.

Miller’s work included *A View From The Bridge*, *The Crucible*, *The Last Yankee* and *The Death of a Salesman*, for which he was awarded the Pulitzer prize in 1949 at the age of just 33. His fame was further magnified when he was catapulted into the Pop culture sphere following his short tempestuous marriage to the actress Marilyn Monroe (five years).

Miller was considered to be one of the foremost literary giants of his era. Born in New York, he died at his chosen home of Connecticut, at the age of 89.



Country House
Restaurant and Hotel
Southport Old Road
Formby
01704 572430

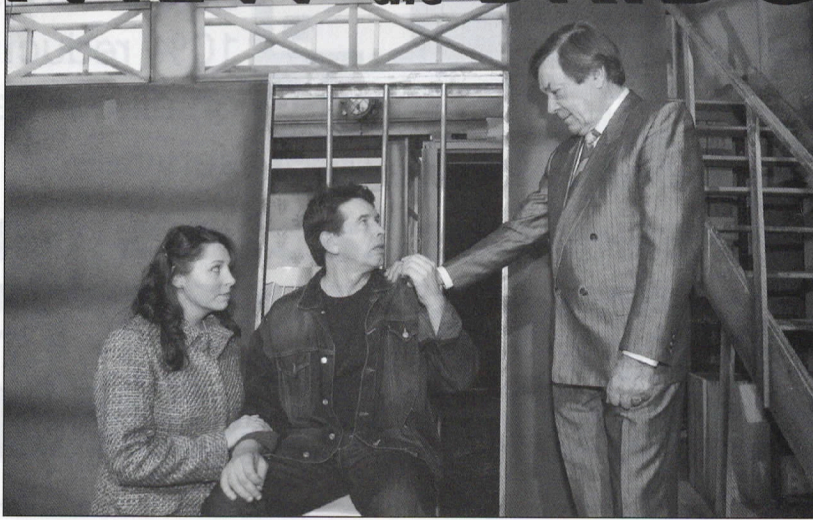
At Tree Tops we pride ourselves on providing first class service and excellent food along with friendly and efficient staff to ensure that your wedding is the most memorable day of your lives. Our Superb Marquee is capable of seating up to 250. Or alternatively for the more intimate wedding parties you may want to hold your civil marriage/partnership in our beautiful Conservatory, followed by your reception in our Superb Restaurant. Our Lodges situated in the grounds can accommodate your guests overnight.

For more information call
01704 572430

Web: www.treetopsformby.co.uk

Email: sales@treetopsformby@fsnet.co.uk

Arthur Miller's **A VIEW** *from* **the BRIDGE**





We would like to offer all SDC patrons a 10% reduction on all our gas services

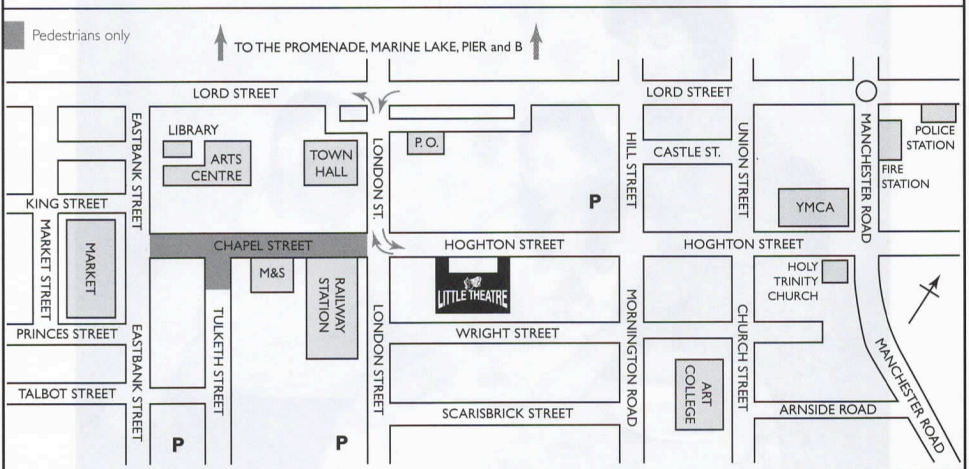
SOUTHPORT GAS SERVICES
Domestic Gas Servicing and Installation

Please contact us on

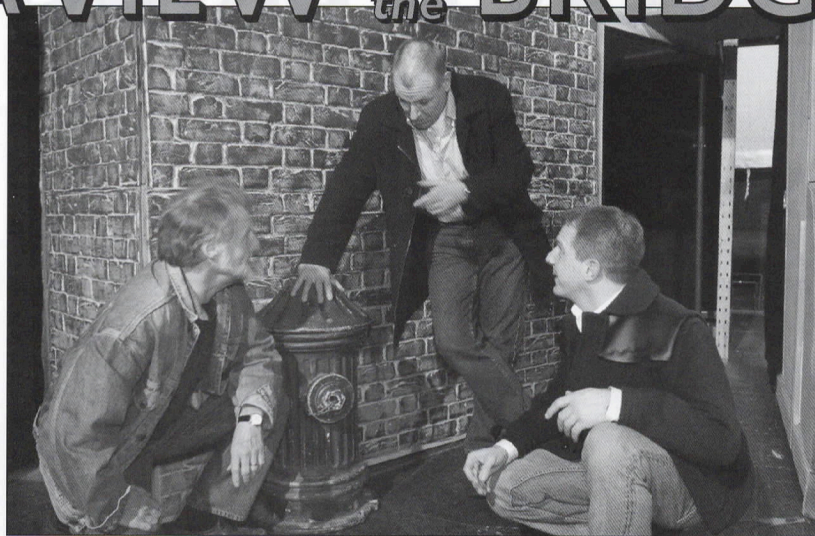
01704 506446

and quote SDC

SUGGESTED PARKING FOR THE LITTLE THEATRE



Arthur Miller's **A VIEW** *from* **the BRIDGE**



Best Actress DIANE MACKLEY



Arthur Miller's **A VIEW** *from the* **BRIDGE**

Directed by **Pat Ball**

Cast

Louis PETER BUCK

Mike JIM LONGWORTH

Alfieri RAY MANN

Eddie DAVID PARRY

Catherine CATHERINE LEIGHT

Beatrice DIANE MACKLEY

Mario BRENDAN GILLOW

Rodolpho ANDREW KAYE

First Immigration Officer ERIC W. RIMMER

Second Immigration Officer JIM LONGWORTH

Mr Lipari PETER BUCK

Mrs Lipari JOAN PETTITT

The action takes place in the apartment and environment of Eddie Carbone, all in Red Hook, on the Bay, seaward from Brooklyn Bridge.

The Time is 1955

There will be an interval of 20 minutes during the performance which is continuous

Staging

Stage Manager	Philip Hutchinson
Assistant Stage Manager (Book)	Jean Watkinson
Props	Barbara Beardsell
Wardrobe	SDC and Cast
Lighting	Tony Berry
Sound	Brian Hodge Alex Braham
Crew	Roderick Beardsell Andrew Connard
Set Design	Syd Coley
Set Constructed by	SDC Production Team
Scenic Artist	Bob Jessamine
Photography by	Neil Hickson

Acknowledgements

The Director would like to thank:

Valentinos' for on-stage meal. The Royal Arcade for Rocking Chair.

The management reserves the right to refuse admission to the auditorium after curtain up until a suitable opportunity occurs. First aid facilities are provided at this theatre by St John Ambulance Brigade, whose members give their services voluntarily.

•
Why not beat the rush and pre-order your interval drinks in the bar?

•
A new induction loop has been installed in this theatre for the benefit of hearing impaired patrons. Please turn your hearing aid to 'T'.

•
Please ensure that all mobile telephones are switched off

•
At the end of tonight's performance you may leave by any of the exits, all of which will be open. In an emergency, this theatre can be emptied in three minutes or less if everyone leaves in an orderly manner.

•
Smoking is prohibited in the auditorium.

DESIGNATED PREMISES SUPERVISOR, ALAN NEWPORT



A fresh approach to the management of residential blocks of apartments or flats in Southport and the surrounding area.

Services include:

- Attending to routine enquiries
- Collection of service charges and other extraordinary payments
- Arranging building insurance at competitive block insurance rates - commission free
- Managing garden maintenance, window cleaning and cleaning of communal areas
- Arranging repairs and structural works and planned programmes for interior/exterior painting and cyclical maintenance

RDHS offers a comprehensive service to discerning clients that can be tailored to your individual requirements.

If you live in a block of apartments or flats and would like to know what RDHS can do for you then please contact:

Suzanne Gray
Marketing & Client Liaison Officer

RDHS Limited

Ash Hurst	T - 01704 831444
17 Duke Street	F - 01704 831539
Formby	W - rdhs.co.uk
Liverpool L37 4AN	E - suzanne.gray@rdhs.co.uk

Arthur Miller's **A VIEW** *from the* **BRIDGE**

Cast

Peter Buck *Louis / Mr Lipari*

This is Peter's first appearance on the Little Theatre stage and we hope it will be the first of many.

He is a very popular member of the cast as he can always be relied on to make the coffee.

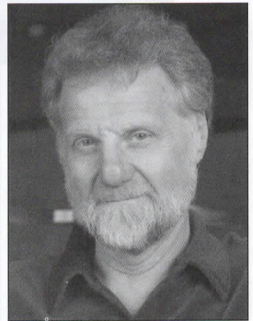
Welcome to the SDC Peter (Ed).



Jim Longworth *Mike / Second Immigration Officer*

Jim has appeared previously in *Katherine Howard*, *Shadowlands*, *Amy's View* and *A Chorus of Disapproval*.

He is playing two parts in this production.

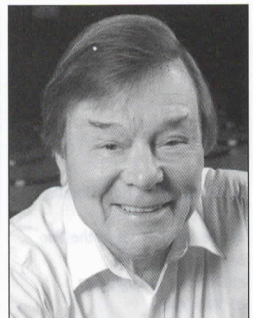


Ray Mann *Alfieri*

This the fifth SDC production in which Ray has enjoyed playing the Narrator's role. Fellow crossword enthusiasts, who happen to be inveterate Little Theatre patrons, will find little difficulty in finding the clues to the titles of the previous plays, in the following:

'Allo 'Allo, Rosie's dancing at the Royal.

For the answers, please turn to the bottom of page 14



Arthur Miller's **A VIEW** *from* **the BRIDGE**



The answers to Ray Mann's
cast profile:
a) *The Royal Hunt of the Sun*,
b) *Cider with Rosie*,
c) *Dancing at Lughnasa*,
d) *'Allo 'Allo*

Arthur Miller's **A VIEW** from the **BRIDGE** Cast

David Parry *Eddie*

This is David's second performance in a Miller play having played the part of Chris in *All My Sons* eight years ago.

After playing McPherson in *Laura* and acting in three Neil Simon plays he is hoping he's getting to grips with the American accent by now.



Catherine Leight *Catherine*

After directing the Youth theatre's production of *Shakespeare, No Holds Bard*, Catherine is delighted to be back on the stage playing Catherine in *A View From The Bridge*. Unlike the calculated Emma in *Betrayal*, Catherine is a victim of circumstances and only tries to follow her heart throughout this tragic story.



Diane Mackley *Beatrice*

Diane is very well known in the area as a member of The Hoghton Players with performances in their Gilbert and Sullivan Operas. She is however very pleased to be involved with this very serious drama for SDC, where she has also appeared from time to time.

(Diane's last appearance at the Little was as a dresser, back stage, during our panto, Dick Whittington.) Ed.



Arthur Miller's **A VIEW** *from* **the BRIDGE**

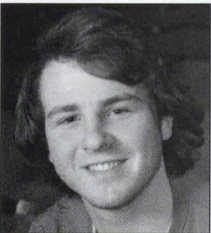
Cast



Brendan Gillow *Mario*

This is Brendans second season at the SDC, in fact his second season at any theatre.

His previous roles have been in murder mystery plays and he is looking forward to tackling a more weighty piece.



Andrew Kaye *Rodolpho*

Andrew is really enjoying playing the part of Rodolpho, having gone into rehearsal immediately following his performance as *Billy Liar*.

He has now added many new skills to his acting C.V. including singing 50s style dancing and boxing.



Eric W. Rimmer *First Immigration Officer*

Although no stranger to the Little Theatre stage having performed in or directed musicals here, Eric is delighted to be cast in *A View From The Bridge* and make his debut in an SDC production. (Which makes a change for Eric as he is usually seen as a 'Front of House Manager'). Ed.



Joan Pettitt *Mrs Lipari*

Joan is a long standing member of the SDC and has worked on-stage, backstage and latterly front of house. She was delighted to be asked to join this talented cast and says "Being an extra is fun without the hardwork and no lines to learn"! She advises her friends not to drop their programmes or they'll miss her.

Arthur Miller's **A VIEW** *from the* **BRIDGE**





LITTLE THEATRE

SOUTHPORT
DRAMATIC CLUB

Dates for your Diary



15th - 18th March 2006

DAISY PULLS IT OFF

By Denise Deegan, directed by James Hughes-Alty
An SDC Youth Theatre Production



31st March - 8th April 2006

THE IMPORTANCE OF BEING EARNEST

by Oscar Wilde, directed by Robin Hirsch
An SDC Production, sponsored by Pack-It



28th April - 6th May 2006

NOISES OFF

by Michael Frayn, directed by Margaret Mann
An SDC Production, sponsored by Davies Maintenance

13th - 20th May 2006

WEST SIDE STORY

A Birkdale Orpheus Society Production



23rd - 27th May 2006

THE

GINGERBREAD LADY

By Neil Simon, directed by David Charters
An SDC Bar Production

31st May - 3rd June 2006

BREEZEBLOCK PARK

By Willy Russel
A "Too Friendly Theatre Co." Production

7th June - 10th June 2006

OLIVER

A Maghull Musical Theatre Co. Production

14th June - 17th June 2006

THE SECRET GARDEN

A Waterloo and Crosby Society Production

23rd June - 24th June 2006

A PAM BAMBER DANCE STUDIO PRODUCTION

28th June - 1st July 2006

GYPSY

A Southport Operatic Society Production



LITTLE THEATRE
HOME OF
SOUTHPORT DRAMATIC CLUB



LITTLE THEATRE

A
SOUTHPORT DRAMATIC CLUB

Youth PRODUCTION



Daisy Pulls It Off

By Denise Deegan

Directed by James Hughes-Alty

15th - 18th March 2006

at 7.30pm

Tickets: £6.75 & £5.00

2 for 1 Opening Night only

Box Office Opens

Saturday 11th March 11am



Box Office:

Tel: (01704) 530521/530460

Fax: (01704) 546782

www.littletheatresouthport.co.uk



LITTLE THEATRE

A
SOUTHPORT DRAMATIC CLUB
PRODUCTION

Oscar Wilde's

Sponsored by
Pack-it



The Importance of Being Earnest

Directed by Robin Hirsch

31st March -
8th April 2006

at 7.45pm

Tickets: £8.25 & £7.00

Box Office Opens
25th March 2006 11am

Box Office:

Tel: (01704) 530521/530460

Fax: (01704) 546782

www.littletheatresouthport.co.uk


LITTLE THEATRE
SOUTHPORT
HOME OF
THE SOUTHPORT DRAMATIC CLUB