



# LITTLE THEATRE

A  
SOUTHPORT DRAMATIC CLUB  
PRODUCTION

*A North Country Lad's World of Fantasy*



# BILLY LIAR

*by Keith Waterhouse and Willis Hall,  
directed by Ray Mann*

**27th January -  
4th February 2006**

**at 7.45pm**



**Box Office:**  
Tel: (01704) 530521/530460  
Fax: (01704) 546782  
[www.littletheatresouthport.co.uk](http://www.littletheatresouthport.co.uk)

# Mitchell & Wright

Printers Limited



For an  
outstanding  
performance

...visit the  
experts

Call 01704 535529 or

Email [sales@mitchellwright.co.uk](mailto:sales@mitchellwright.co.uk)

The Print Works, Banastre Road, Southport PR8 5AL

# Director's Notes



Welcome to Stradhoughton, a gritty industrial town in northern England. It is 1960, the doorway to the decade that would be called 'The Swinging Sixties' - but not yet - and certainly not here.

The Fisher family members are 'no nonsense' Northerners, well, all except one, Billy! Billy's imagination has a habit of running riot. He lives a 'Walter Mitty-like' existence. His vivid fantasies cannot be deflated by either his sour, nagging father or the presence of those 'dark Satanic mills'. The play asks how can such disparate characters share the same time and place?

Tonight's performance will provide part of the answer. I hope that you may be sufficiently enthralled by the play to continue to wonder, after you leave the theatre, what Billy's fate might be.

One thing more to mention, Billy Liar is a Comedy.

Humour has always been a perceptive way of examining reality and probably is the reason why the play has been an undoubted success over the years.

We hope you enjoy it. Thank you for coming!

**Ray Mann**  
Director

Supplying the complete  
range of legal  
services

**Maxwell**  
SOLICITORS **Hodge**

Contact **Michael Yates** on  
**01704 872156**

*Home and out of hours visits by arrangement*



West Lancashire  
Flooring Limited

**CONTRACT & DOMESTIC FLOORING SPECIALISTS**

**Amisco**



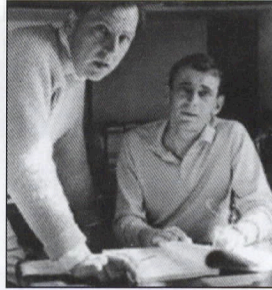
**Tarkett**

PRE - FINISHED  
HARDWOOD FLOORING

Tel: 01695 578369 Fax: 01695 570623 Email: [admin@wlflooring.co.uk](mailto:admin@wlflooring.co.uk)

74 Ormskirk Business Park, New Court Way, Ormskirk, Lancashire L39 2YT

# A Remarkable Partnership



Willis Hall and Keith Waterhouse formed one of the most popular and endearing partnerships in the 20th Century, which started when they met at the age of 12 in school and discovered their love of writing. Years later each having achieved many successes in their own right. Both men had been brought up in Leeds, Hall stuck to Yorkshire never losing in voice or manner his Yorkshire roots. Hall discovered Adam Faith and started him in *Budgie* along with another of his long running TV series, *Worzel Gummidge*.

Keith Waterhouse had by 1960 established himself as a Journalist with two novels to his credit *There is a happy hand* and *Billy Liar*, then came the joint Stage version of *Billy Liar*, which brought acclaim for Albert Finney and later, a young Tom Courtney. Among their film scripts were *Whistle down the wind* and *A kind of loving*.

During the early 60s they were regular contributors for *That was the week that was* and on to many more productions too numerous to mention.

Mr Waterhouse was a columnist for the Mirror newspaper and now for the Daily Mail and winner of many glittering prizes, 14 novels, plays TV scripts and much else.

Sadly, Willis Hall died on March 7th 2004 aged 75.



# NORTH WEST CANCER RESEARCH FUND

HELP US FIND THE CAUSE

**Funding Cancer Research for Over 50 Years**

22 Oxford Street, Liverpool L7 7BL Tel: 0151 709 2919

Charity Reg. No. 223598

## SOUTHPORT, LANCASHIRE

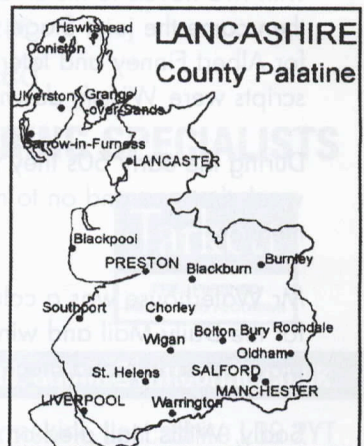
**Use it - make the point**

Despite changes for administrative purposes no legislation has altered the boundaries of the traditional county of Lancashire.

If you live in the area shown on this map you live in Lancashire - so include Lancashire in your address.

**Friends of Real Lancashire**

Visit our Website: [www.forl.co.uk](http://www.forl.co.uk)  
or E-mail: [csd@forl.co.uk](mailto:csd@forl.co.uk)



# BILLY LIAR





Country House  
Restaurant and Hotel  
Southport Old Road  
Formby  
01704 572430

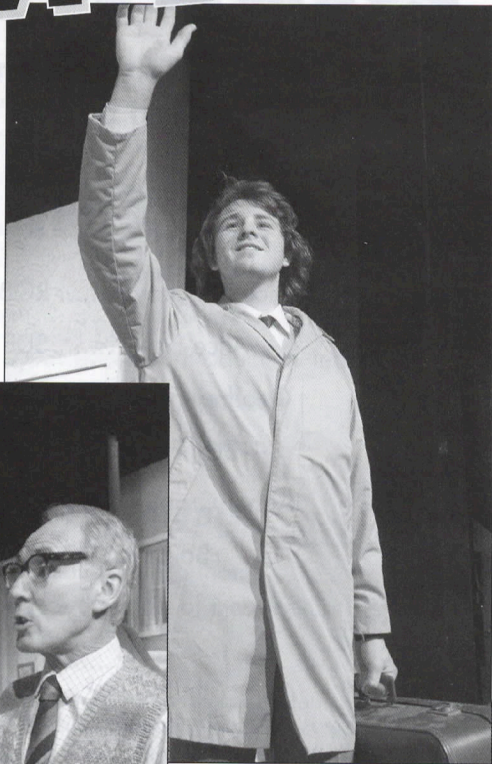
At Tree Tops we pride ourselves on providing first class service and excellent food along with friendly and efficient staff to ensure that your wedding is the most memorable day of your lives. Our Superb Marquee is capable of seating up to 250. Or alternatively for the more intimate wedding parties you may want to hold your civil marriage/partnership in our beautiful Conservatory, followed by your reception in our Superb Restaurant. Our Lodges situated in the grounds can accommodate your guests overnight.

For more information call  
**01704 572430**

Web: [www.treetopsformby.co.uk](http://www.treetopsformby.co.uk)  
Email: [sales@treetopsformby@fsnet.co.uk](mailto:sales@treetopsformby@fsnet.co.uk)



# BILLY LIAR



# BILLY LIAR

by Keith Waterhouse and Willis Hall,  
directed by Ray Mann

## Cast

Florence Boothroyd ..... ROBIN HIRSCH  
Alice Fisher ..... SUE HARROP  
Geoffrey Fisher ..... PETER HESLIN  
Billy Fisher ..... ANDREW KAYE  
Arthur Crabtree ..... RIKKI SPOFFORTH  
Barbara ..... CERI WATKINS  
Rita ..... HELEN GARRAHAN  
Liz ..... NATALIE FLETCHER

The play is set in Stradhoughton, an industrial town in the north of England in 1960, one Saturday in September.

### Act 1

Scene 1      After Breakfast  
Scene 2      After Tea

### Act 2

Scene 1      A little later  
Scene 2      Dusk

There will be a 20 minute interval between the two acts

# Staging

Stage Manager.....	Andrew Connard
Assistant Stage Manager (Book).....	June Hunter
Props.....	Julie Whelan
Wardrobe.....	SDC and Cast
Lighting.....	Andrew Connard Laura Neal
Sound.....	Brian Hodge Alex Fletcher
Set Design.....	Syd Coley
Set Constructed by.....	SDC Production Team
Scenic Artist.....	Bob Jessamine
Photography by.....	Neil Hickson

## Acknowledgements

The Director would like to thank:  
The Salvation Army for the loan of the furniture.

The management reserves the right to refuse admission to the auditorium after curtain up until a suitable opportunity occurs. First aid facilities are provided at this theatre by St John Ambulance Brigade, whose members give their services voluntarily.

•  
***Why not beat the rush and pre-order your interval drinks in the bar?***

•  
A new induction loop has been installed in this theatre for the benefit of hearing impaired patrons. Please turn your hearing aid to 'T'.

•  
***Please ensure that all mobile telephones are switched off***

•  
At the end of tonight's performance you may leave by any of the exits, all of which will be open. In an emergency, this theatre can be emptied in three minutes or less if everyone leaves in an orderly manner.

•  
Smoking is prohibited in the auditorium.

DESIGNATED PREMISES SUPERVISOR, ALAN NEWPORT



**LITTLE THEATRE**  
HOME OF

**SOUTHPORT DRAMATIC CLUB**

# Advertisers Wanted

**Spaces to let in this programme**

**Half Page – £25.00** per production plus VAT

**Full Page – £50.00** per production plus VAT

Please contact: Norman Hope, Publicity Committee

HOGHTON STREET, SOUTHPORT

Tel: (01704) 530521/530460 [www.littletheatresouthport.co.uk](http://www.littletheatresouthport.co.uk)

Registered Charity No. 221585



# BILLY LIAR

## Cast

### **Robin Hirsch** *Florence Boothroyd*

In her first acting role since Mistress Quickly in *The Merry Wives of Windsor*, Robin is enjoying playing the decidedly 'slower' part of Billy's morose Grandmother, Florence. The 1960s catchphrase "It's being so miserable that keeps me going!" comes to mind! Robin wishes to stress that any characterisation achieved, is NOT based on her own real-life experience as a 'Granny' even though her own family say she is developing a tendency to repeat herself!



### **Sue Harrop** *Alice Fisher*

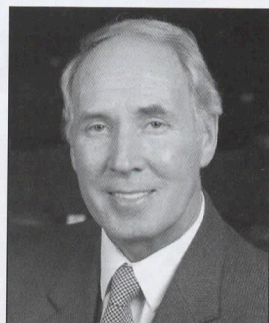
Sue thought that in playing the part of Billy's Mother, Alice, she would be able to draw on her real life experience of bringing up her own three sons. However, she is now extremely grateful to say that the similarities are almost zero!



### **Peter Heslin** *Geoffrey Fisher*

Peter has been involved both on stage and backstage for a number of years. He has taken both large and small roles at the Little Theatre including *Shadowlands*, *Business Affairs*, *The Perfect Murder* and *Star Quality*.

He has also appeared in musicals for local operatic societies and has happy memories of *Kiss Me Kate* and *South Pacific*. He enjoys serious productions as well as comedy. He was last seen at the Little in *Fatal Encounter*, but he also Stage Managed *Pack of Lies* earlier this season. He dedicates his part in *Billy Liar* to his Yorkshire roots.





# LITTLE THEATRE HOME OF

## SOUTHPORT DRAMATIC CLUB

**Do you ENJOY ACTING and PERFORMING  
out your FANTASIES, like our hero in  
today's play *Billy Liar*?**

If so SDC would welcome you as a full member.  
Application forms for membership are available on request  
from the Secretary, Tel: **01704 530521/530460** and or any  
member or house manager on duty at the performances.

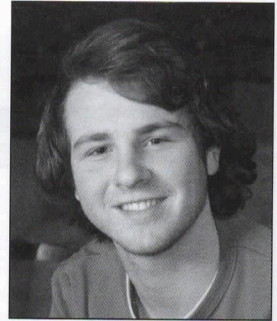


# BILLY LIAR

## Cast

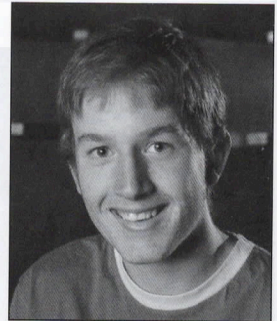
### **Andrew Kaye** *Billy Fisher*

This is Andrew's first main season appearance with SDC but recently he has played the parts of Romeo and Bottom in the youth theatre's performance of *Shakespeare, No Holds Bard*. Billy Fisher is living every young man's fantasy. He has a dream job in London which is guaranteed to bring him fame and fortune, which will come in handy when supporting his fiancée's, goody, goody Barbara, fiery Rita and his kindred spirit Liz. But is everything as perfect as Billy makes it out to be?



### **Rikki Spofforth** *Arthur Crabtree*

Rikki has really enjoyed rehearsing for *Billy Liar*. After playing a naive teenager in *Caught in The net*, he is overjoyed to be playing a slightly less naive teenager - Arthur, in *Billy Liar*.

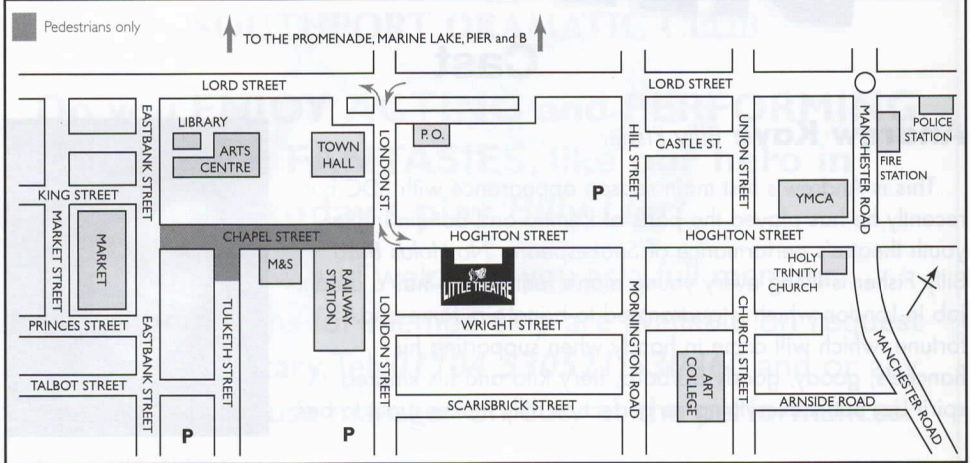


### **Ceri Watkins** *Barbara*

The part of Barbara is a complete diversion for Ceri whose last two roles were a French floozy in 'Allo 'Allo and a scheming, sex-starved siren, Irene in *The Dresser*. Prissy, prim and proper Barbara's only passion is oranges! At least the regular doses of fresh fruit have helped to stave off the winter coughs and colds.



# SUGGESTED PARKING FOR THE LITTLE THEATRE





# BILLY LIAR

## Cast

### Helen Garrahan *Rita*

Helen made her debut in a main season play earlier this season in our opener *Caught in The Net*, after appearing in several Youth Productions and Pantomimes. She particularly enjoyed playing Roberta in *The Railway Children*. She feels very privileged to be playing in her second main season play and being directed this time by Ray Mann.



### Natalie Fletcher *Liz*

Natalie started rehearsals for this production of *Billy Liar*, whilst appearing as Judy Jetsom in our Pantomime *Dick Whittington*. She has also appeared in our Youth Productions and enjoyed playing a principal role in *Into The Woods* in September 2005. She is very pleased to be appearing in her first main season play along with this very talented cast and being directed by Ray Mann.





# LITTLE THEATRE

SOUTHPORT  
DRAMATIC CLUB

## Dates for your Diary



24th February - 4th March 2006

### **A VIEW FROM THE BRIDGE**

by Arthur Miller, directed by Pat Ball  
This Amateur Production is presented by arrangement  
with Josef Weinberger Ltd.  
An SDC Production



15th - 18th March 2006

### **DAISY PULLS IT OFF**

Directed by James Hughes-Alty  
An SDC Youth Theatre Production



31st March - 8th April 2006

### **THE IMPORTANCE OF BEING EARNEST**

by Oscar Wilde, directed by Robin Hirsch  
An SDC Production



28th April - 6th May 2006

### **NOISES OFF**

by Michael Frayn,  
directed by Margaret Mann  
An SDC Production

13th - 20th May 2006

### **WEST SIDE STORY**

A Birkdale Orpheus Society Production

23rd - 27th May 2006



### **THE GINGERBREAD LADY**

By Neil Simon,  
directed by David Charters  
An SDC Production

31st May - 3rd June 2006

### **BREEZEBLOCK PARK**

By Willy Russel  
A "Too Friendly Theatre Co." Production

7th June - 10th June 2006

### **OLIVER**

A Maghull Musical Theatre Co. Production

14th June - 17th June 2006

### **THE SECRET GARDEN**

A Waterloo and Crosby Society Production

23rd June - 24th June 2006

### **A PAM BAMBER DANCE STUDIO PRODUCTION**

28th June - 1st July 2006

### **GYPSY**

A Southport Operatic Society Production



## LITTLE THEATRE

HOME OF  
SOUTHPORT DRAMATIC CLUB

Hoghton Street, Southport. Tel: (01704) 530521/530460 Web: [www.littletheatresouthport.co.uk](http://www.littletheatresouthport.co.uk)

Independent financial advice to suit you



L u d l o w

Ludlow & Co, Independent Financial Advisors

172 Lord Street • Southport • PR9 0QA

T: 01704 500324 • F: 01704 500965

Email: [ludlow@ludco.co.uk](mailto:ludlow@ludco.co.uk)

Authorised and Regulated by the FSA



# LITTLE THEATRE

A  
SOUTHPORT DRAMATIC CLUB  
PRODUCTION

## Arthur Miller's



# A VIEW from the BRIDGE

**Directed by Pat Ball**

*This Amateur production is presented by arrangement  
with Josef Weinberger Ltd.*

**24th February -  
4th March 2006  
at 7.45pm**

**Tickets:** £8.25 & £7.00

**Box Office Opens**

18th February 11am



**Box Office:**

Tel: (01704) 530521/530460

Fax: (01704) 546782

[www.littletheatresouthport.co.uk](http://www.littletheatresouthport.co.uk)