



LITTLE THEATRE

A
SOUTHPORT DRAMATIC CLUB
PRODUCTION

Southport's most spectacular family Pantomime



Dick Whittington

Brought to you by the same team from last year's successful show.

**21st December 2005 -
8th January 2006**

Written & Directed by Stephen Hughes-Alty

Musical Direction by Paul Williams

Choreography by Nicki Denis

Staged by Arnold Gorse



Box Office:

Tel: (01704) 530521/530460

Fax: (01704) 546782

www.littletheatresouthport.co.uk

NatWest

The Bank that means Business

*The whole team at
Southport Business Centre
are delighted to be
supporting this festive
production once again.*



**Merry Christmas
and a Happy New Year**

Director's Notes



From left to right: Nicki Denis, Stephen Hughes-Alty, Paul Williams and Arnold Gorse

Ladies and gentlemen, boys and girls. Season greetings and welcome to the Little Theatre.

Dick Whittington is perhaps, my favourite of pantomime tales. Its heroic rags to riches story is brimming with spectacular moments: Tommy the Brave Cat, The despicable King Rat and The beautiful Fairy of Bow Bells, come together in an enchanting fable where good overthrows evil, and love conquers all.

I would like to thank everyone who has helped in anyway on tonight's production. It takes many, many volunteers to put on a show of this magnitude. I am in debted to them all.

I would also like to thank you, our audience for choosing to come with us on what we hope will be a magical and enjoyable journey.

Stephen Hughes-Alty
Director

Supplying the complete
range of legal
services

Maxwell
SOLICITORS **Hodge**

Contact **Michael Yates** on
01704 872156

Home and out of hours visits by arrangement



West Lancashire
Flooring Limited

CONTRACT & DOMESTIC FLOORING SPECIALISTS

Amisco



Tarkett
PRE - FINISHED
HARDWOOD FLOORING

Tel: 01695 578369 Fax: 01695 570623 Email: admin@wlflooring.co.uk

74 Ormskirk Business Park, New Court Way, Ormskirk, Lancashire L39 2YT

Dick Whittington and his Cat

Fact or Fiction?

Although pantomime is a typically British pastime, most of the stories we are familiar with are based on European Fairy Tales. The two most notable exceptions are *Dick Whittington and his Cat* and *Robin Hood and the Babes in the Wood* which are based on heroes of English folklore. Both stories seemingly follow the exploits of factual characters. How much of the story is actually true?

The real life Richard Whittington, unlike the pantomime character, was not poor; being the third son of Sir William Whittington of Gloucester. There are, however, many similarities between the fictional Whittington and the historical figure. Richard did marry Alice Fitzwarren, the daughter of an Alderman, and became Lord Mayor of London in 1397, and later again in 1406 and 1419.

Sadly it does not appear that he had a cat, however on Highgate Hill today there stands a statue in honour of this faithful creature, on the site where, according to legend he heard the bells of London call him back to become 'Three Times Lord Mayor'.

The traditional pantomime adds yet another element to the tale in the form of the arch villain of Pantomime, King Rat. The addition of rats to the story possibly harks back to the Black Death which Londoners recalled with fear. Rats were the cause of the great plagues and the triumph over 'King Rat' would have been a popular ending to the story.

The first recorded Pantomime of Dick Whittington was in 1814, with Joseph Grimaldi playing Dame Cecily Suet. However, the play dates back to around 1605. Samuel Pepys wrote in his diary dated 1668, 'To Southwark Fair, very dirty, and there saw the puppet show of Whittington, which was pretty to see'.

Despite its age and apparent incongruities it still remains one of the most popular of festive stories.



For an
outstanding
performance
...visit the experts



Mitchell & Wright Printers Limited

Call 01704 535529 or

Email sales@mitchellwright.co.uk



NORTH WEST
**CANCER
RESEARCH
FUND**

HELP US FIND THE CAUSE

Funding Cancer Research for Over 50 Years

22 Oxford Street, Liverpool L7 7BL Tel: 0151 709 2919

Charity Reg. No. 223598

Dick Whittington





Country Club

Christmas at Tree Tops – Don't miss out, Book Early.
Party nights in the restaurant. Party nights in the Marquee.
Fine food and first class entertainment

What's On

Friday November 4th

Posh Scouse Night

With top comedian, Johnny Kennedy providing the entertainment rounded off with fireworks.

Saturday 3rd December

Gary Anthony – Resident singer and Disco

Friday 9th December

Gary Anthony – Resident singer and Disco

Saturday 10th December

Tina Ballantino – Superb Tina Turner tribute and Disco

Thursday 15th December

Sally Anne Harmen – Brilliant vocalist and Disco

Friday 16th December

Gary Anthony – Resident singer and Disco

Saturday 17th December

Gary Anthony – Resident singer and Disco

Wednesday 21st December

Anthony Paul – Live male vocal entertainer and Disco

Thursday 22nd December

Gary Anthony – Resident singer and Disco

Friday 23rd December

Back by popular demand, not to be missed, book early to avoid disappointment

Rockafella and Disco

New Year's Eve

Black Tie Dinner with

Gary Anthony – Resident singer and Disco

Friday 6th January

ABBA Love – Outstanding two girl ABBA tribute

All the above events are available from our ticket hotline on

01704 572430

Southport Old Road, Formby

Dick Whittington



Dick Whittington

Written & Directed by Stephen Hughes-Alty

Musical Direction by Paul Williams, Choreography by Nicki Denis,
Staged by Arnold Gorse.

Cast in order of appearance

Tinkle, Fairy of Bow Bells..... JULIET ANDERSON
King Rat..... ERYL LLOYD-PARRY
Alice Fitzwarren..... REBEKAH HINDS
Alderman Fitzwarren..... NORMAN HOPE
Idle Jack..... MATTHEW ABRAMS
Sarah Suet..... ARNOLD GORSE
Dick Whittington..... ZAHRA ROACH
Tommy The Cat..... DANIEL FELL
Judy Jepsom..... NATALIE FLETCHER
Captain Frederick Flotsam..... ANDREW MACKLEY
Sheikh Dabottle, The Sultan..... ANDREW SHEARER
Tuffazel..... HELENE PORTER
Avocado..... LAURA HOWARTH

Other parts played by the Ensemble

Ensemble

Charlotte Armitage, Helen Bench, Eric Chadwick, Emma Corboz, Nick Donnelly,
Lauren Forkings, Alex Fletcher, Clare Haworth, Heather Holden, Amy Howard,
Sabrina Regazzoni, Beth Schofield, Gemma Softley.

Rats

Sarah Alty, Zoe Findlay, Jennifer Holden, Yasmin Paul.

Children

Katie Alty, Olivia Darkes-Sutcliffe, Matthew Green, Mark Newell, Corinne Paul, Mariah Paul.

Musicians

Keyboards PAUL WILLIAMS
Percussion ADAM HELSBY
Bass Guitar JOHN WATKINSON

Synopsis of Scenes

Act 1

- Scene 1: Outside Fitzwarren's stores in old London Town
- Scene 2: King Rat's Lair deep in the sewers of London
- Scene 3: Carnaby Street
- Scene 4: Inside Fitzwarren's Store
- Scene 5: A country lane outside London
- Scene 6: Top of High Gate Hill, London
- Scene 7: Dick Whittington's dream

Act 2

- Scene 1: On board 'The Saucy Sal' in London docks
- Scene 2: In the hold
- Scene 3: On the deck of 'The Saucy Sal' at sea
- Scene 4: The shores of Morocco
- Scene 5: Inside the Sultan's Palace
- Scene 6: Back home in London Town
- Scene 7: A wedding at the Mansion House

There will be a 20 minute interval between the two acts

Pyrotechnics, smoke, ultraviolet light and strobe lighting may be used in this production.

The management reserves the right to refuse admission to the auditorium after curtain up until a suitable opportunity occurs. First aid facilities are provided at this theatre by St John Ambulance Brigade, whose members give their services voluntarily.

Why not beat the rush and pre-order your interval drinks in the bar?

A new induction loop has been installed in this theatre for the benefit of hearing impaired patrons. Please turn your hearing aid to 'T'.

Please ensure that all mobile telephones are switched off

At the end of tonight's performance you may leave by any of the exits, all of which will be open. In an emergency, this theatre can be emptied in three minutes or less if everyone leaves in an orderly manner.

Smoking is prohibited in the auditorium.

DESIGNATED PREMISES SUPERVISOR, ALAN NEWPORT

Dick Whittington

Staging by Arnold Gorse

Stage Manager	Judith Gorse Laura Gorse
Assistant Stage Manager	Thomas Shallcross
Wardrobe	James Hughes-Alty Colin Alty Dorothy Alty Hazel Forshaw
Props	Judith Gorse Laura Gorse Alex Howarth Amy Wilson
Lighting	Tony Berry
Follow Spots	Ashley Turner Adam Hodgson
Special Effects / Pyrotechnics	Andrew Connard
Sound	Brian Hodge Bernie Howat
Flies	Colin Haynes Chris Appleton Pete Beswick
Set Constructed by	SDC Production Team
Scenic Artist	Bob Jessamine
Photography by	Neil Hickson
Choreographer	Nicki Denis
Musical Director	Paul Williams

Stage Crew

Roderick Beardsell	Colin Haynes	Pete Beswick
Bill Davies	Mike Yates	Michelle Martin
Phil Hutchinson	Mark Haworth	Lindsay Newport
Syd Coley	Chris Appleton Snr.	Alan Newport
Jeremy Myers	Matthew Woodhams	Jonathan Gosling
Adrian Robert	Chris Ratcliffe	Lindsay Haywood
	Colin Wood	

And many SDC members too numerous to mention

Dick Whittington

cast in order of appearance

Juliet Anderson *Fairy of Bow Bells*

Having played an evil vampire seductress, an evil ugly sister and a manipulative Shakespearian mother in the last twelve months, Juliet has been elevated to the part of Fairy Tinkle...literally! It's a good job she's not afraid of heights.



Eryl Lloyd-Parry *King Rat*

Eryl brings a delicious gravitas to the role of King Rat. His booming baritone, sweeping gestures and fabulous facial expressions combine in a truly menacing performance. He would like to assure the audience that he is in fact a kindly soul and actually quite likes children...especially on toast!



Rebekah Hinds *Alice Fitzwarren*

During the summer, Bex appeared in the SDC Youth Group's production of *Into the Woods* where she played the beautiful, kind and graceful Cinderella. Relishing the challenge and as a complete contrast she is now portraying the beautiful, kind and graceful Alice Fitzwarren.



Norman Hope *Alderman Fitzwarren*

Norman has been in more pantomimes than he has had hot dinners and although he regularly has a packed lunch that's still quite a lot. His favourite pantomime is *Dick Whittington*. His favourite packed lunch is tuna sandwiches and an apple with a carton of low sugar Ribena.





We would like to offer all SDC patrons a 10% reduction on all our gas services

SOUTHPORT GAS SERVICES

Domestic Gas Servicing and Installation

Please contact us on

01704 506446

and quote SDC



Dick Whittington

cast in order of appearance

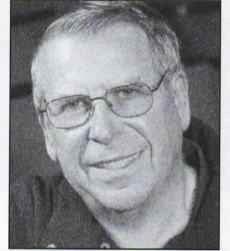
Matthew Abram *Idle Jack*

After playing the title role in the Youth Group's production of *Dracula*, Matt couldn't wait to sink his teeth into the character of Idle Jack. This is his first foray into the world of pantomime so he's got a lot at 'stake'!



Arnold Gorse *Sarah Suet*

It must be Christmas time again. The shops are full of tinsel, the telly is full of repeats and Arnold Gorse is in a frock! Despite rumours, Arnold did not appear in the very first production of *Dick Whittington* at the Theatre Royal, Drury Lane, in 1814, however, he did stage it!



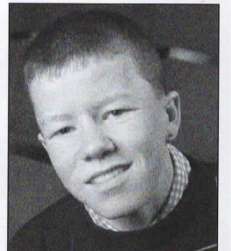
Zahra Roach *Dick Whittington*

Ever since watching Mollie Sugden in re-runs of *Are You Being Served* on UK Gold. Zahra has wanted to be an actress. Sadly her dream is yet to be realised as technically she is playing a young man in this production which of course, makes her an actor.



Daniel Fell *Tommy The Cat*

Daniel was thrilled to be cast as Dick Whittington's feline companion and couldn't wait to get into character. We didn't mind him purring his way through rehearsals but we objected to him eating Kit-e-Kat at every opportunity. The lengths some people will go to. Daniel will soon be appearing as Tiddles in the new Felix advert.



Dick Whittington

cast in order of appearance



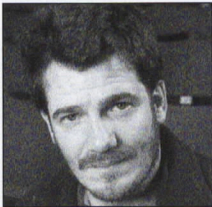
Natalie Fletcher *Judy Jetsam*

Natalie Miranda Louisa Carmen Guinevere Belinda Veronica Milly Molly Mandy Fletcher has the longest name in the cast. Sadly, by the time you have written Natalie Miranda Louisa Carmen Guinevere Belinda Veronica Milly Molly Mandy Fletcher there is no room left for a biography.



Andrew Mackley *Captain Frederick Flotsam*

Although playing the part of the daring sailor Frederick Flotsam, Andrew actually gets sea-sick if he's standing in a puddle. He would like to dedicate his performance in *Dick Whittington* to Captain Birdseye who has offered him much advice and support during the rehearsal process.



Andrew Shearer *Sheikh Dabottle, The Sultan*

Andrew loves the theatre to such an extent that when he was young he used to pretend to be the Nolan Sisters' younger brother. When not appearing in pantomime such as *Dick Whittington*, Andrew can be found...somewhere else. He dedicates this performance to his pet cabbage, Oscar.



Helene Porter *Tuffazel*

Although quite small in stature, Helene has a mighty BIG voice which she uses to great effect as the keeper of the Sultan's harem. She says she enjoys the chance to wear leather and strut about in front of an audience whilst carrying a whip. We say that what she does in her own time is entirely up to her...!



Laura Howarth *Avocado*

Laura was last seen as Juliet in the Youth Group's production of *Shakespeare, No Holds Bard!* She is very pleased to be playing a character that doesn't die. Laura's hobbies include reading, acting and carving vegetables into the likenesses of minor T.V. celebrities.

Dick Whittington





LITTLE THEATRE

SOUTHPORT
DRAMATIC CLUB

Dates for your Diary



27th January - 4th February 2006

BILLY LIAR

by Keith Waterhouse and Willis Hall,
directed by Ray Mann
An SDC Production.

Sponsored by Mitchell & Wright Printers Ltd.

28th April - 6th May 2006

NOISES OFF

by Michael Frayn,
directed by Margaret Mann
An SDC Production



24th February - 4th March 2006

A VIEW FROM THE BRIDGE

by Arthur Miller, directed by Pat Ball
This Amateur Production is presented by
arrangement with Josef Weinberger Ltd.
An SDC Production

13th - 20th May 2006
WEST SIDE STORY

A Birkdale Orpheus Society Production

23rd - 27th May 2006

THE GINGERBREAD LADY

By Neil Simon,
directed by David Charters
An SDC Production



15th - 18th March 2006

DAISY PULLS IT OFF

Directed by James Hughes-Alty
An SDC Youth Theatre Production

31st May - 4th June 2006
BREEZEBLOCK

PARK

By Willy Russel
A "Too Friendly Theatre Co." Production



31st March - 8th April 2006

THE IMPORTANCE OF BEING EARNEST

by Oscar Wilde, directed by Robin Hirsch
An SDC Production



LITTLE THEATRE
HOME OF
SOUTHPORT DRAMATIC CLUB

Hoghton Street, Southport. Tel: (01704) 530521/530460 Web: www.littletheatresouthport.co.uk

Independent financial advice to suit you



L u d l o w

Ludlow & Co, Independent Financial Advisors

172 Lord Street • Southport • PR9 0QA

T: 01704 500324 • F: 01704 500965

Email: ludlow@ludco.co.uk

Authorised and Regulated by the FSA



LITTLE THEATRE

A
SOUTHPORT DRAMATIC CLUB
PRODUCTION

A North Country Lad's World of Fantasy

Sponsored by



Mitchell & Wright Printers Limited



BILLY LIAR

*by Keith Waterhouse and Willis Hall,
directed by Ray Mann*

**27th January -
4th February 2006
at 7.45pm**

Tickets: £8.25 & £7.00

**Box Office Opens
21st January 2006 11am**

Box Office:

Tel: (01704) 530521/530460

Fax: (01704) 546782

www.littletheatresouthport.co.uk


LITTLE THEATRE
SOUTHPORT
HOME OF
THE SOUTHPORT DRAMATIC CLUB