



LITTLE THEATRE

A
SOUTHPORT DRAMATIC CLUB
PRODUCTION



Pack of Lies

A moving drama of intrigue and betrayal

By Hugh Whitemore

Directed by Celia Pope

21st - 29th

October 2005

at 7.45pm

Box Office:

Tel: (01704) 530521/530460

Fax: (01704) 546782

www.littletheatresouthport.co.uk


LITTLE THEATRE
SOUTHPORT
HOME OF
THE SOUTHPORT DRAMATIC CLUB

Supplying the complete
range of legal
services

Maxwell
SOLICITORS **Hodge**

Contact **Michael Yates** on
01704 872156

Home and out of hours visits by arrangement



West Lancashire
Flooring Limited

CONTRACT & DOMESTIC FLOORING SPECIALISTS

Amisco



Tarkett
PRE - FINISHED
HARDWOOD FLOORING

Tel: 01695 578369 Fax: 01695 570623 Email: admin@wlflooring.co.uk

74 Ormskirk Business Park, New Court Way, Ormskirk, Lancashire L39 2YT

Director's Notes



Welcome! The stage is set. Come into Bob and Barbara's sitting room and kitchen which has been lovingly built up since their marriage in the early 1940s.

We are spying on the true, unfolding drama in *Pack of Lies* by Hugh Whitmore.

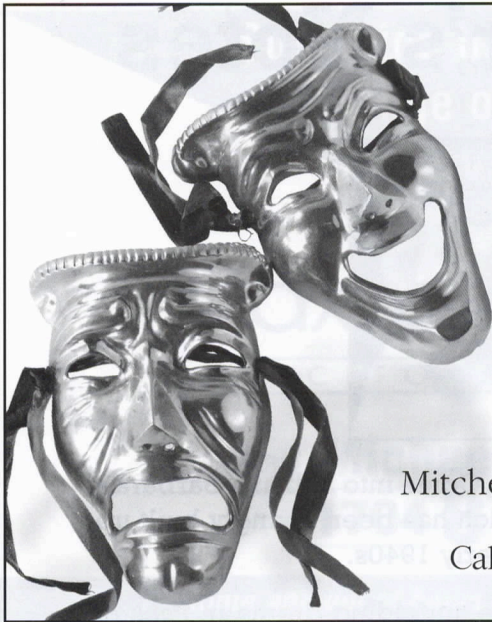
This piece of modern history is brought to life by a highly talented and hard working cast. Though challenging to direct it has been a delightful experience.

The real name of the 'Jacksons' is Search; when they and the Krogers were headline news the front page of *The Times* contained births, marriages and deaths. Page two was appointments and racing. The third page was the one with the primary news. Just a thought!

The recognised symbol for theatre is the two drama masks, one laughing and one crying. Tonight that symbol will live.

Thank you for supporting the SDG.

Celia Pope
Director



For an
outstanding
performance
...visit the experts



Mitchell & Wright Printers Limited

Call 01704 535529 or

Email sales@mitchellwright.co.uk



NORTH WEST
**CANCER
RESEARCH
FUND**

HELP US FIND THE CAUSE

Funding Cancer Research for Over 50 Years

22 Oxford Street, Liverpool L7 7BL Tel: 0151 709 2919

Charity Reg. No. 223598

Notes on the Author

Hugh Whitmore

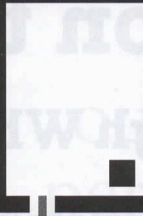
Hugh Whitmore studied for the stage at the Royal Academy of Dramatic Art (RADA) where he is now a member of the Council. His writings include original plays, ranging from Kafka to Daphne Du Maurier, twice receiving Writers Guild Awards, his plays include *The Gathering Storm* and *Breaking the Code*, which won for him a shelf-full of awards.

In America his four-hour film *Concealed Enemies*, won him an Emmy award as a screenwriter. Mr Whitmore has created a niche for himself with historical plays which focus on the personalities and characters of those involved in famous events rather than the events themselves.

His latest play, *As You Desire Me*, from Pirandello, is currently showing at the Play House in the West End, starring Kristin Scott Thomas and Bob Hoskins.



Pack of Lies: in 1961 Peter and Helen Kroger, two Americans living in a London suburb, were convicted of spying for the Russians. From these true facts Hugh Whitmore has written a powerfully moving fictional play.




We would like to offer all SDC patrons a 10% reduction on all our gas services

SOUTHPORT GAS SERVICES
Domestic Gas Servicing and Installation

Please contact us on

01704 506446

and quote SDC

Peter Brown  **independent estate agents**

www.peterbrownestateagents.co.uk

peterbrown@btconnect.com



find us



4/6 Post Office
Southport PR9 0US

Tel: (01704) 501400
Fax: (01704) 546178

42 Station Road
Ainsdale PR8 3HW

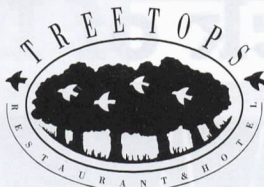
Tel: (01704) 572000
ainsdale@pbstateagents.co.uk

72 Botanic Road
Churchtown PR9 7NE

Tel: (01704) 233111
churchtown@pbstateagents.co.uk

Pack of Lies





Country Club

Christmas at Tree Tops – Don't miss out, Book Early.
Party nights in the restaurant. Party nights in the Marquee.
Fine food and first class entertainment

What's On

Friday November 4th

Posh Scouse Night

With top comedian, Johnny Kennedy providing the entertainment rounded off with fireworks.

Saturday 3rd December

Gary Anthony – Resident singer and Disco

Friday 9th December

Gary Anthony – Resident singer and Disco

Saturday 10th December

Tina Ballantino – Superb Tina Turner tribute and Disco

Thursday 15th December

Sally Anne Harmen – Brilliant vocalist and Disco

Friday 16th December

Gary Anthony – Resident singer and Disco

Saturday 17th December

Gary Anthony – Resident singer and Disco

Wednesday 21st December

Anthony Paul – Live male vocal entertainer and Disco

Thursday 22nd December

Gary Anthony – Resident singer and Disco

Friday 23rd December

Back by popular demand, not to be missed, book early to avoid disappointment

Rockafella and Disco

New Year's Eve

Black Tie Dinner with

Gary Anthony – Resident singer and Disco

Friday 6th January

ABBA Love – Outstanding two girl ABBA tribute

All the above events are available from our ticket hotline on

01704 572430

Southport Old Road, Formby

Pack of Lies



Pack of Lies

by **Hugh Whitemore**

Directed by **Celia Pope**

Cast

Bob Jackson Mike Yates

Barbara Jackson Poppy Flanagan

Julie Jackson Emma Corboz

Helen Kroger Margaret Hodge

Peter Kroger Robert Jones

Stewart Brian Bentley

Thelma Jan Hale

Sally Helene Porter

The action of the play takes place in a suburb of London
during the autumn and winter of 1960.

The main events of the story are true.

Act 1 An autumn weekday morning

Act 2 A winter weekday morning

There will be an interval of 20 minutes between Acts 1 and 2.

Staging

Stage Manager	Peter Heslin
Assistant Stage Manager (book)	Jenny Parker
	Sue Palmer
Props	Matthew Woodhams
	Julie Whelan
	Jeremy Myers
Wardrobe	SDC and Cast
Lighting	Andrew Connard
Sound	Brian Hodge
Set Design	Syd Coley
Set Constructed by	SDC Production Team
Scenic Artist	Bob Jessamine
Photography by	Neil Hickson

Acknowledgements

The Director would like to thank:

**Roy Godfrey, for the construction of several items on the set,
The Salvation Army and Home Choice.**

The management reserves the right to refuse admission to the auditorium after curtain up until a suitable opportunity occurs. First aid facilities are provided at this theatre by St John Ambulance Brigade, whose members give their services voluntarily.

Why not beat the rush and pre-order your interval drinks in the bar?

A new induction loop has been installed in this theatre for the benefit of hearing impaired patrons. Please turn your hearing aid to 'T'.

Please ensure that all mobile telephones are switched off

At the end of tonight's performance you may leave by any of the exits, all of which will be open. In an emergency, this theatre can be emptied in three minutes or less if everyone leaves in an orderly manner.

Smoking is prohibited in the auditorium.

DESIGNATED SITE SUPERVISOR, ALAN NEWPORT

Pack of Lies

Cast



Celia Pope *Director*

This is the third year running that Celia has directed a main season play for the SDC. Last year it was *Inside Job* and before that, *Tilting Ground*.

For the STC she directed *Once A Catholic* and for SAOS, *42nd Street*.

Celia has played many roles in theatre, her favourite being Jean in Ronald Harwood's *Quartet*, the story of an actress/opera singer who is fading fast. What are we trying to say?



Mike Yates *Bob Jackson*

Mike first met Bob Jackson when he saw Michael Williams' superb performance in the West End original.

Mike was fortunate enough to play Bob 18 years ago in the last SDC production and is delighted to do so again this time. He is also enjoying his third marriage to Poppy Flanagan.



Poppy Flanagan *Barbara Jackson*

Pack of Lies has been a favourite play of hers since she played Helen Kroger with The Garrick at Worden Park, Leyland approximately 20 years ago. She was, therefore, delighted to be given the part of Barbara in Celia's production. As rehearsals progressed she has come to realise that she is very like the character Barbara in many ways. She hasn't yet decided if that is a help or an extra problem to contend with. She will leave you to decide but if you know a good therapist perhaps you could leave a contact number at the Box Office, for Poppy

Pack of Lies

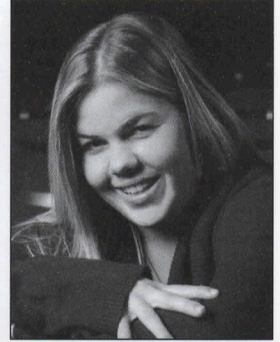
Cast

Emma Corboz *Julie Jackson*

Emma has appeared on the Little Theatre stage as a pupil of the Loreto-Bamber dancing school.

Having recently joined the SDC youth theatre she is delighted to be appearing in this main season production of *Pack of Lies*.

(Emma will next be seen in our pantomime, *Dick Whittington*, as a dancer) Ed.



Margaret Hodge *Helen Kroger*

Margaret remembers watching *Act of Betrayal* on television in the 70s, which was based on real events of espionage, and the theme intrigued her so much that when the stage version was selected for this season she very much wanted to be a part of it.

She is sure you will enjoy it as much as she has.



Robert Jones *Peter Kroger*

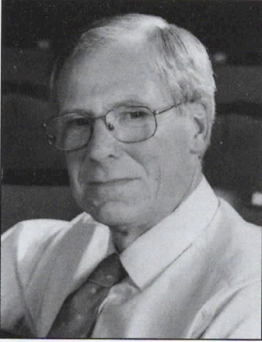
Four productions with SDC and two with Southport Operatic dispelled Robert's concerns over rumoured language and cultural differences before emigrating here two years ago from his native Yorkshire.

He misses hills though!



Pack of Lies

Cast



Brian Bentley *Stewart*

Brian's last appearance for SDC was in *The Perfect Murder*, having previously appeared in *The Business of Murder* and *Dial M for Murder* – yes, a significant pattern begins to emerge, as he says in Act II of *A Pack of Lies*.

Other attempts include Ford, in *The Merry Wives of Windsor*, Richard, in *Heyfever* and C. S. Lewis, in *Shadowlands*.



Jan Hale *Thelma*

When you think of British spies you think of James Bond, so when Jan was asked to be a member of the Secret Service for this play she thought of cool, calm and sophistication.

What she got was sausages and a crash helmet!



Helene Porter *Sally*

Helene is delighted to be involved in such an interesting storyline and has really enjoyed the rehearsals.

Helene has also appeared in *The Herbal Bed*, *Cinderella* and *The Perfect Murder*, and has now started rehearsals for our pantomime, *Dick Whittington*.

Pack of Lies



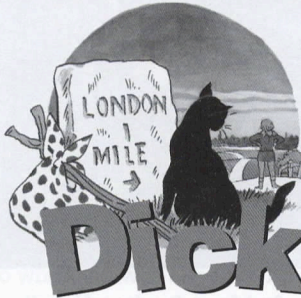


LITTLE THEATRE

A
SOUTHPORT DRAMATIC CLUB
PRODUCTION

Southport's most spectacular family Pantomime

Sponsored by
 NatWest



Dick Whittington

Brought to you by the same team from last year's successful show.

**21st December 2005 -
8th January 2006**

Written & Directed by Stephen Hughes-Alty

Musical Direction by Paul Williams

Choreography by Nicki Dennis

Staged by Arnold Gorse

Box Office:

Open now for advance booking

Box Office:

Tel: (01704) 530521/530460

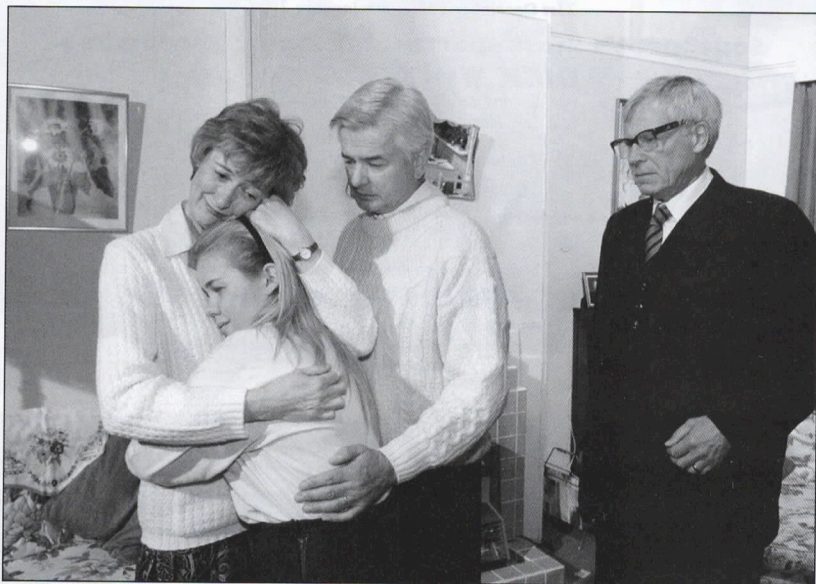
Fax: (01704) 546782

www.littletheatresouthport.co.uk


LITTLE THEATRE
SOUTHPORT
HOME OF
THE SOUTHPORT DRAMATIC CLUB

Tel: (01704) 530521/530460 Fax: (01704) 546782 Web: www.littletheatresouthport.co.uk

Pack of Lies





LITTLE THEATRE

SOUTHPORT
DRAMATIC CLUB

Dates for your Diary

2nd November - 5th November 2005

HELLO DOLLY

A Maghull Musical Theatre Company Production

9th November - 12th November 2005

FIDDLER ON THE ROOF

A Birkdale Orpheus Production

25th November - 3rd December 2005

Agatha Christie's

A MURDER IS ANNOUNCED

adapted for stage by Leslie Darbon, directed by David Parry.
An SDC Production. Sponsored by Royal Bank of Scotland

21st December 2005 - 8th January 2006

Southport's most spectacular family **Pantomime**

DICK WHITTINGTON

Written and directed by Stephen Hughes-Alty
An SDC Production. Sponsored by NatWest

Now Booking

27th January - 4th February 2006

BILLY LIAR

by Keith Waterhouse and Willis Hall, directed by Ray Mann
An SDC Production

24th February - 4th March 2006

A VIEW FROM THE BRIDGE

by Arthur Miller, directed by Pat Ball
This Amateur Production is presented by arrangement with Josef Weinberger Ltd.
An SDC Production


LITTLE THEATRE
HOME OF
SOUTHPORT DRAMATIC CLUB

Hoghton Street, Southport. Tel: (01704) 530521/530460 Web: www.littletheatresouthport.co.uk

Independent financial advice to suit you



L u d l o w

Ludlow & Co, Independent Financial Advisors

172 Lord Street • Southport • PR9 0QA

T: 01704 500324 • F: 01704 500965

Email: ludlow@ludco.co.uk

Authorised and Regulated by the FSA



LITTLE THEATRE

A
SOUTHPORT DRAMATIC CLUB
PRODUCTION

Agatha Christie's



A Murder *is Announced*

Dramatised by
Leslie Darbon

Directed by David Parry

**25th November -
3rd December 2005**
at 7.45pm

Tickets: £8.25 & £7.00

Box Office Opens

19th November 11am

Box Office:

Tel: (01704) 530521/530460

Fax: (01704) 546782

www.littletheatresouthport.co.uk


LITTLE THEATRE
SOUTHPORT
HOME OF
THE SOUTHPORT DRAMATIC CLUB